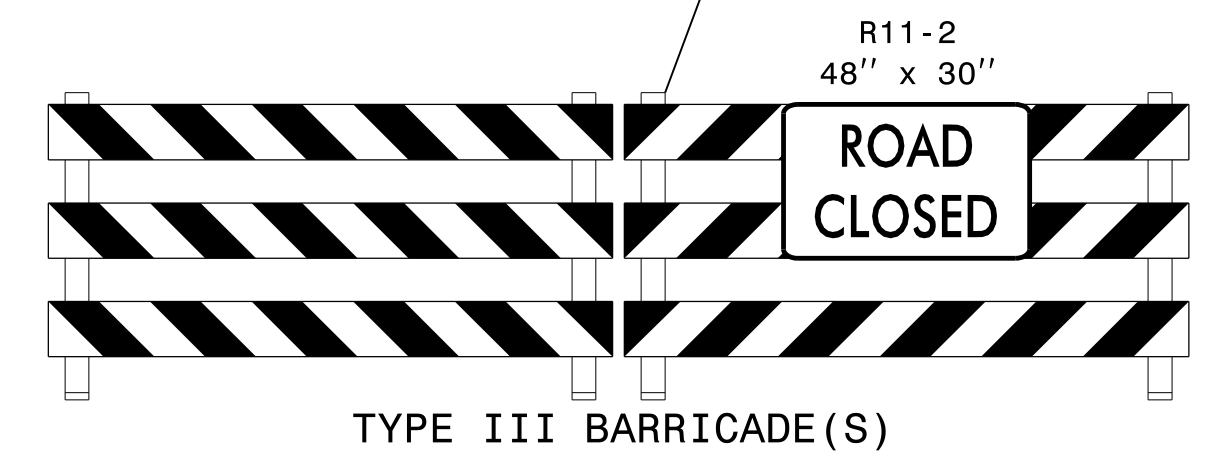
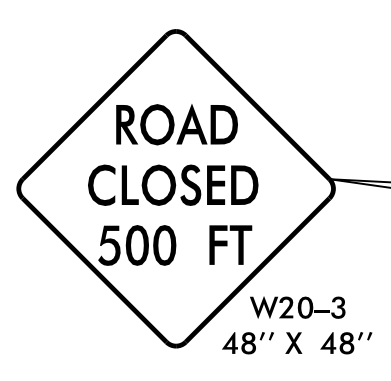


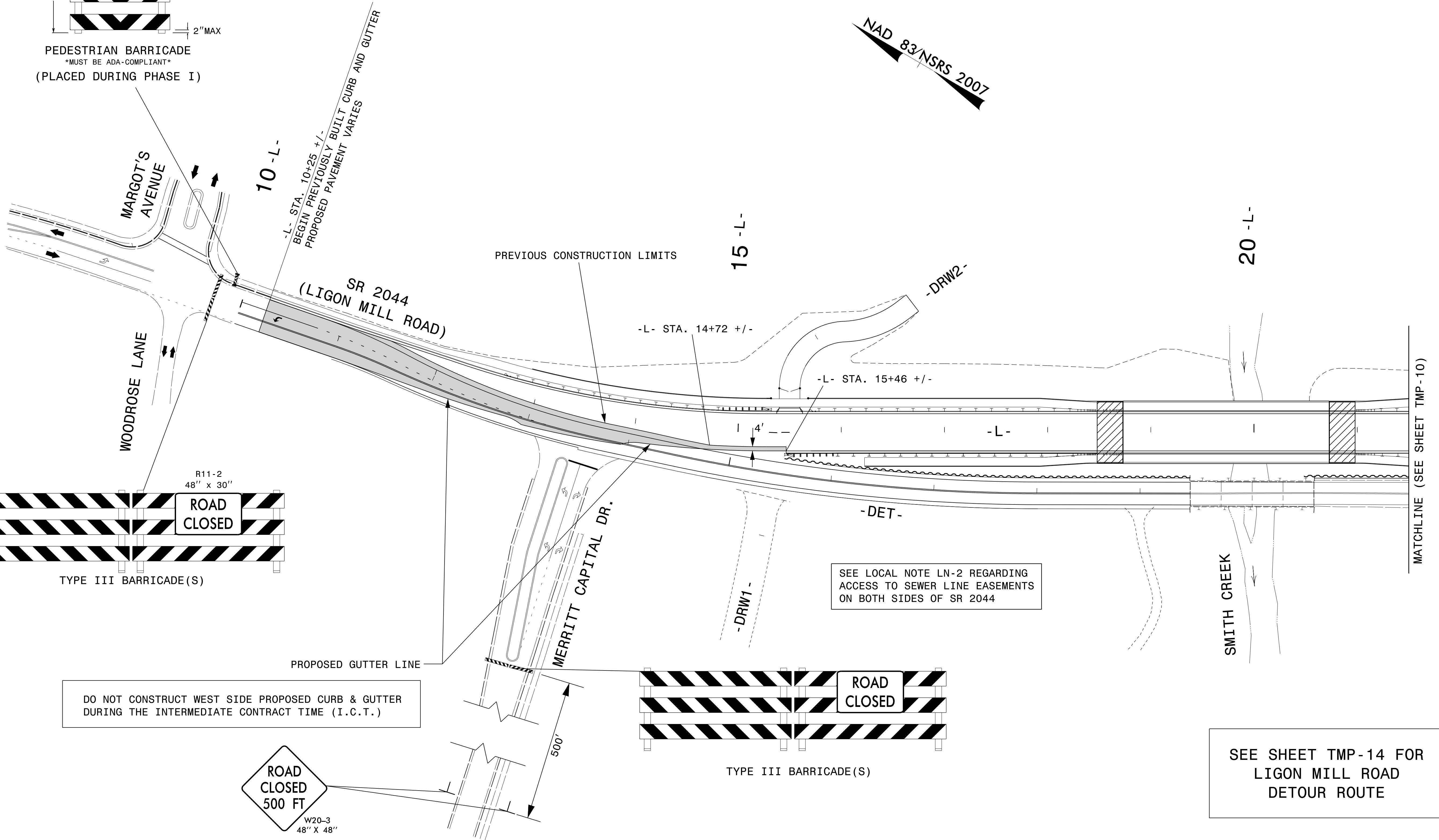
PEDESTRIAN BARRICADE
MUST BE ADA-COMPLIANT
(PLACED DURING PHASE I)



TYPE III BARRICADE(S)



DO NOT CONSTRUCT WEST SIDE PROPOSED CURB & GUTTER DURING THE INTERMEDIATE CONTRACT TIME (I.C.T.)



← NAD 83/NSRS 2007

SEE LOCAL NOTE LN-2 REGARDING ACCESS TO SEWER LINE EASEMENTS ON BOTH SIDES OF SR 2044

SEE SHEET TMP-14 FOR LIGON MILL ROAD DETOUR ROUTE

26-SEP-2022 10:05
 P:\50084265\50084274_B5318_PH2\CAD\Civil\B5318\Traffic\Control\TCP\Plans\200_070_B5318_TC_TCP_09.dgn
 jwiles AT R30K8AV4



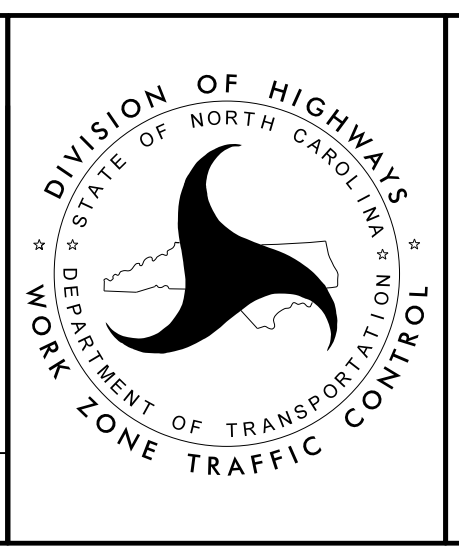
2610 WYCLIFF ROAD
SUITE 410
RALEIGH, NC 27607
PHONE: 919.881.9939
NC COA No. F-0929

APPROVED: *[Signature]*
DATE: 9/26/2022

SEAL

SEAL
NORTH CAROLINA PROFESSIONAL ENGINEER
J. TODD BROOKS
SEAL 17586

DOCUMENT NOT CONSIDERED FINAL UNLESS ALL SIGNATURES COMPLETED



**PHASE III,
STEPS 1 & 2
DETAIL**