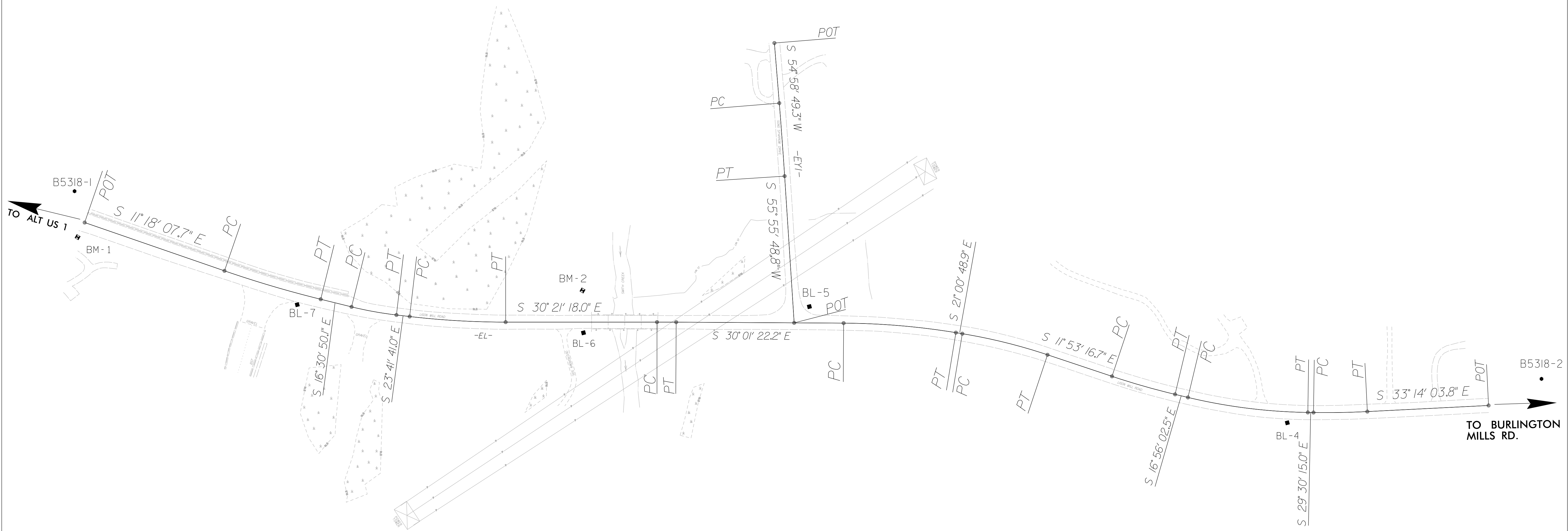
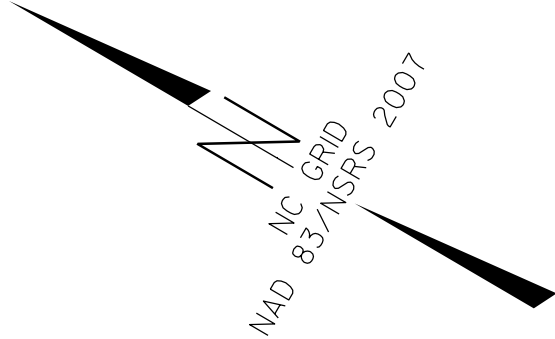


SURVEY CONTROL SHEET B-5318

W/EXISTING CENTERLINE ALIGNMENTS PRIOR TO CONSTRUCTION



REVISIONS

DATUM DESCRIPTION

THE LOCALIZED COORDINATE SYSTEM DEVELOPED FOR THIS PROJECT IS BASED ON THE STATE PLANE COORDINATES ESTABLISHED BY NCCDOT FOR MONUMENT "B5318-1"

WITH NAD 83/NSRS 2007 STATE PLANE GRID COORDINATES OF
 NORTHING: 794379.776(ft) EASTING: 2139517.414(ft)
 ELEVATION: 244.537(ft)

THE AVERAGE COMBINED GRID FACTOR USED ON THIS PROJECT (GROUND TO GRID) IS: 0.99993371

THE N.C. LAMBERT GRID BEARING AND LOCALIZED HORIZONTAL GROUND DISTANCE FROM "B5318-1" TO -L- STATION 10+00 IS
 S 41° 48' 00.31" W 59.66

ALL LINEAR DIMENSIONS ARE LOCALIZED HORIZONTAL DISTANCES
 VERTICAL DATUM USED IS NAVD 88

NOTE: DRAWING NOT TO SCALE

NOTES:

1. PROJECT CONTROL WAS ESTABLISHED USING GNSS, THE GLOBAL NAVIGATION SATELLITE SYSTEM.
2. THE SURVEY CONTROL DATA FOR THIS PROJECT HAS BEEN COMPILED FROM VARIOUS SOURCES. IF FURTHER INFORMATION REGARDING PROJECT CONTROL IS NEEDED, PLEASE CONTACT THE LOCATION AND SURVEYS UNIT.