

5/14/19

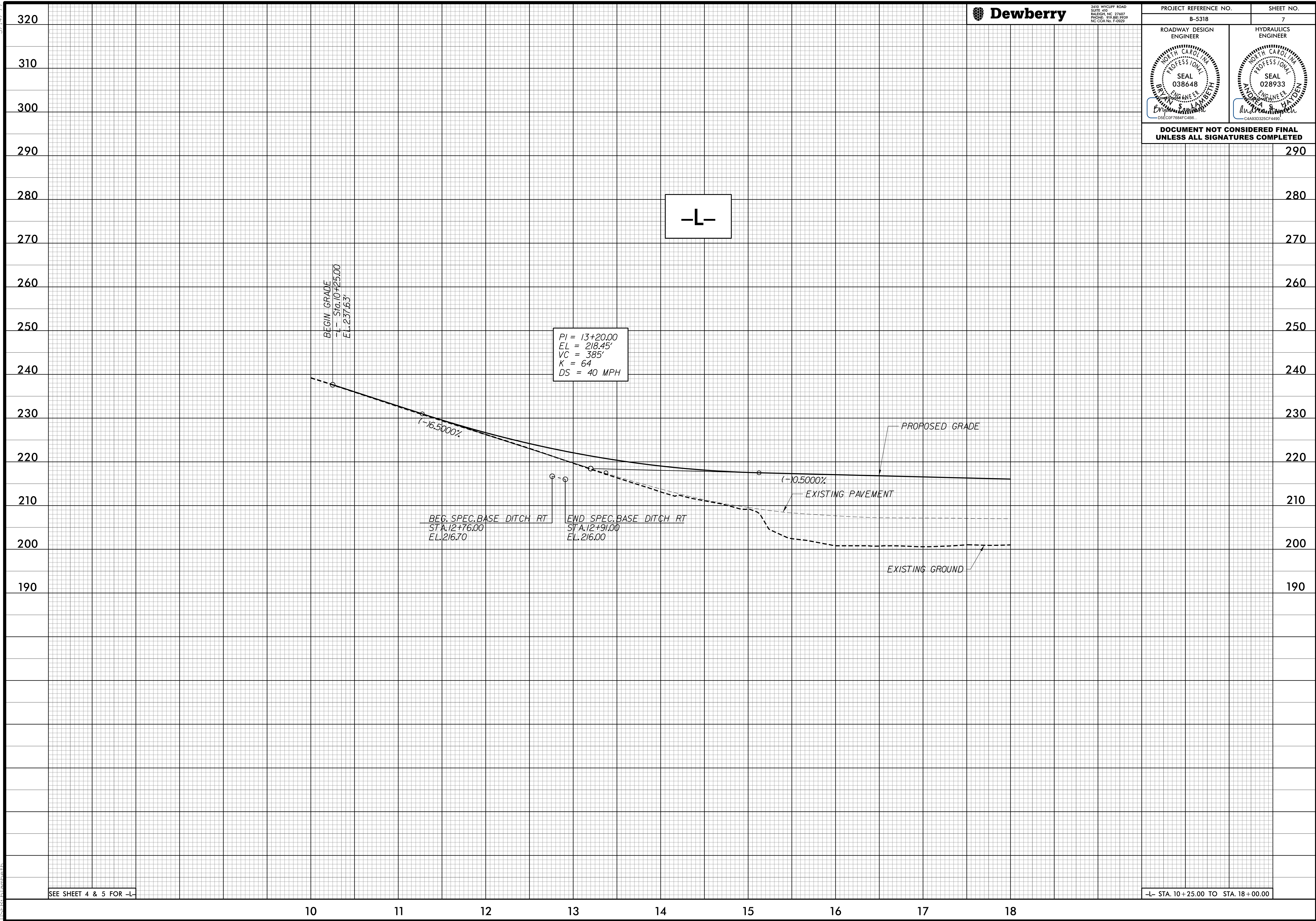


2810 WYCLIFF ROAD  
SUITE 410  
RALEIGH, NC 27609  
PHONE: 919.881.9939  
NC CCA No. F-0629

PROJECT REFERENCE NO. B-5318 SHEET NO. 7

ROADWAY DESIGN ENGINEER	HYDRAULICS ENGINEER

DOCUMENT NOT CONSIDERED FINAL UNLESS ALL SIGNATURES COMPLETED



-L-

PI = 13+20.00  
EL = 218.45'  
VC = 385'  
K = 64  
DS = 40 MPH

BEGIN GRADE  
L- STA. 10+25.00  
EL. 237.63'

BEG. SPEC. BASE DITCH RT  
STA. 12+76.00  
EL. 216.70

END SPEC. BASE DITCH RT  
STA. 12+91.00  
EL. 216.00

PROPOSED GRADE

EXISTING PAVEMENT

EXISTING GROUND

SEE SHEET 4 & 5 FOR -L-

-L- STA. 10+25.00 TO STA. 18+00.00

8/23/2019 10:38:10 PM L-07.dgn

10 11 12 13 14 15 16 17 18