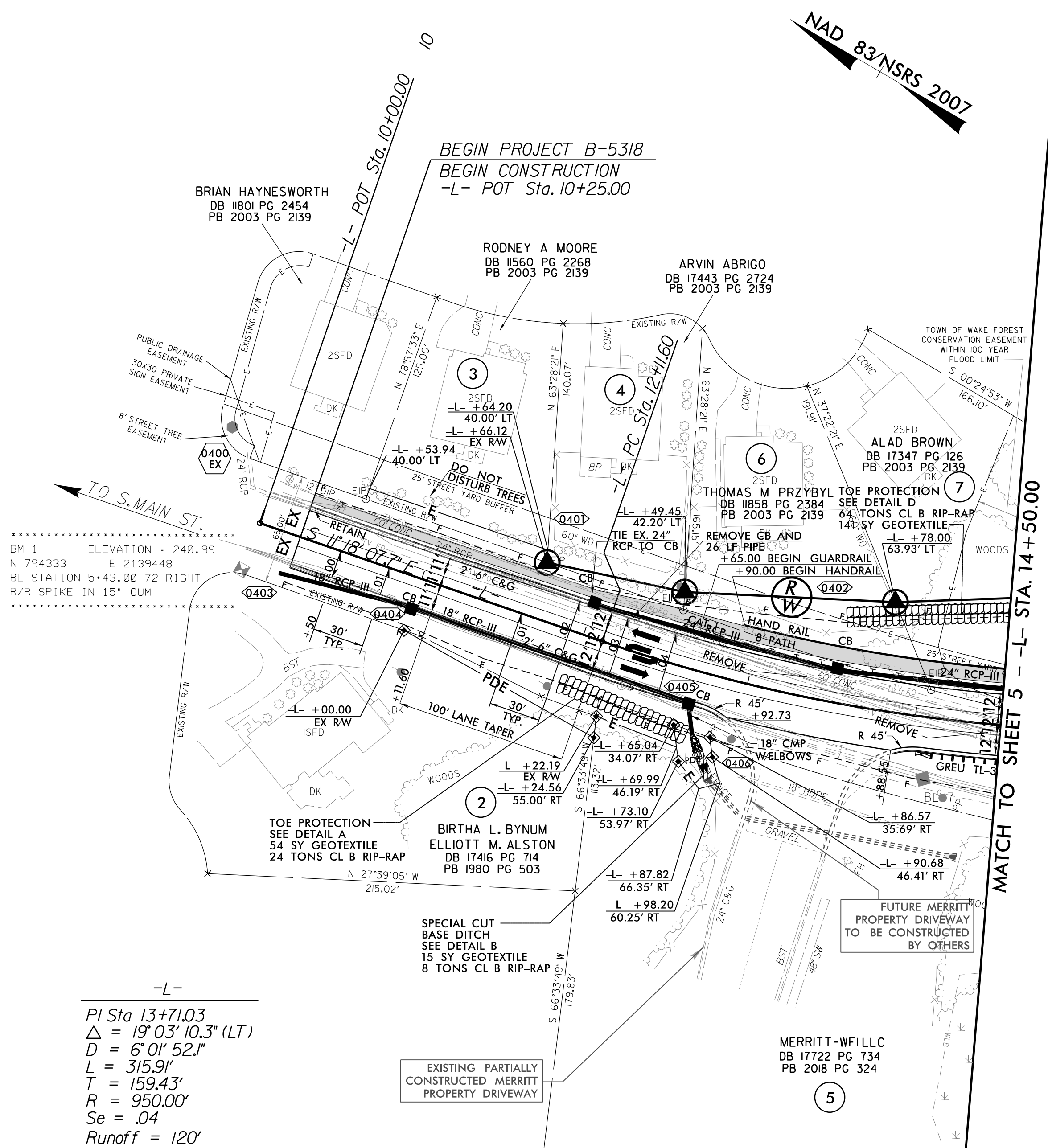
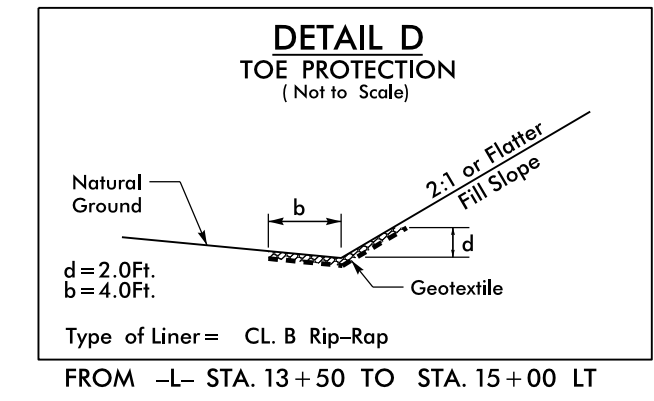


RW SHEET NO.	
ROADWAY DESIGN ENGINEER	HYDRAULICS ENGINEER

DOCUMENT NOT CONSIDERED FINAL UNLESS ALL SIGNATURES COMPLETED



BM-1 ELEVATION = 240.99
N 794333 E 2139448
BL STATION 5+43.00 72 RIGHT
R/R SPIKE IN 15' GUM

-L-
PI Sta 13+71.03
 $\Delta = 19^{\circ} 03' 10.3''$ (LT)
D = 6' 01" 52.1"
L = 315.91'
T = 159.43'
R = 950.00'
Se = .04
Runoff = 120'

