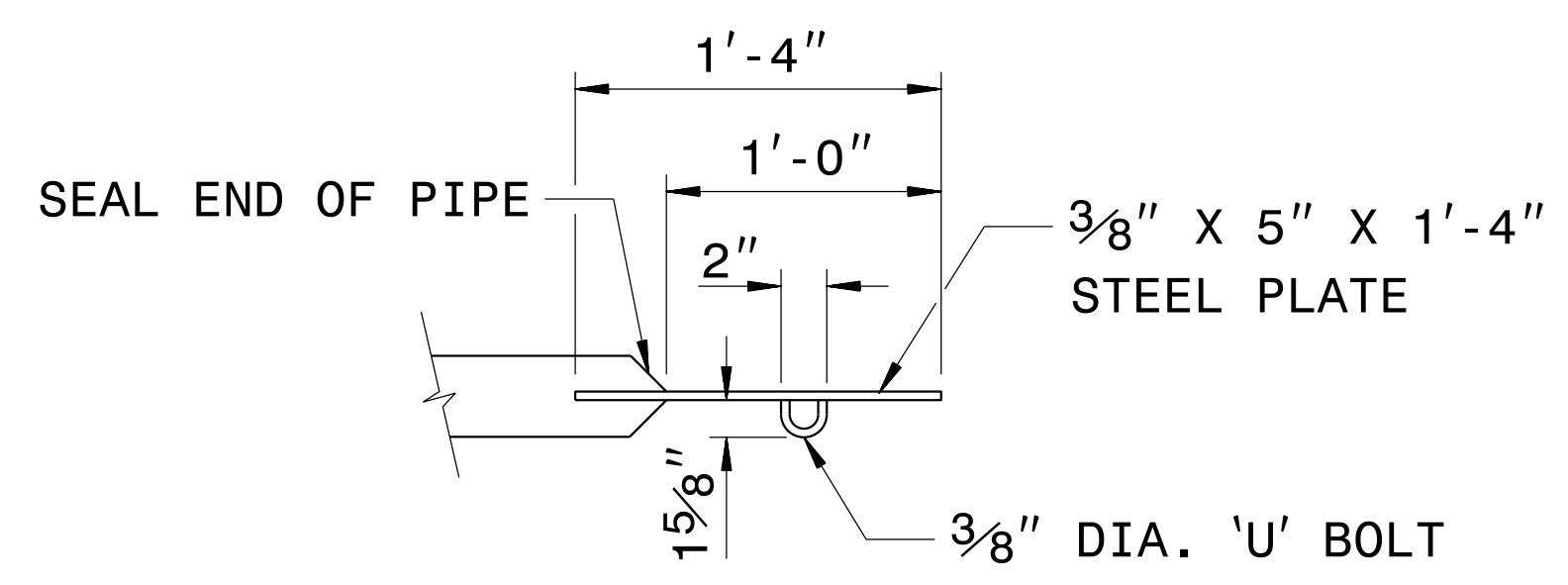
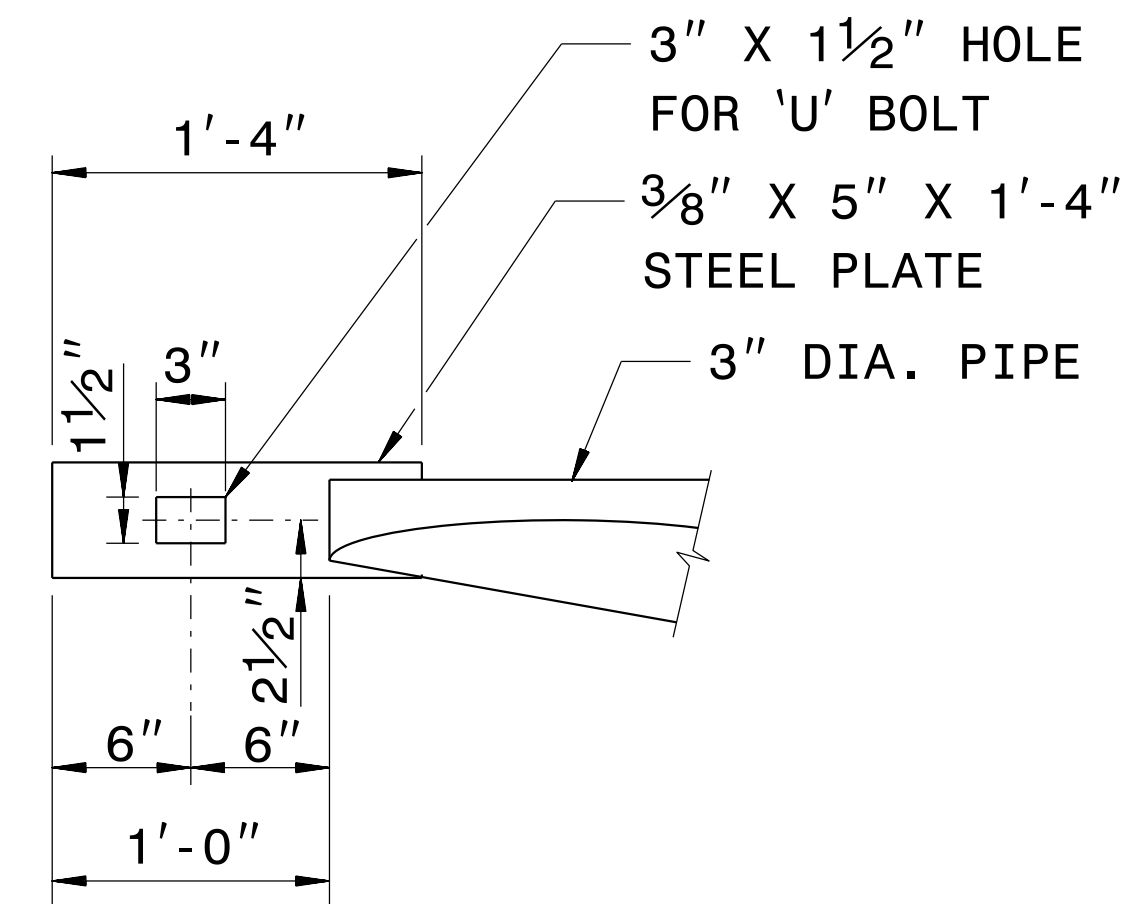


ELEVATION VIEW



LATCH DETAILS

GENERAL NOTES:

- 1- USE ASTM A36 STEEL.
- 2- 1/4" FILLET WELDS ON ALL CONNECTIONS.
- 3- USE CLASS 'B' CONCRETE.
- 4- LOCATE GATE AS DIRECTED BY THE ENGINEER.
- 5- ALL PIPE SIZES ARE O.D.
- 6- LUBRICATE 2 1/2" DIA. PIPE BEFORE INSTALLING GATE TO INSURE SMOOTH OPERATION.



CONTRACT STANDARDS & DEVELOPMENT UNIT
STANDARDS AND SPECIAL DESIGN
Office 919-707-6950 FAX 919-250-4119

**DETAIL OF
STEEL PIPE GATE**

ORIGINAL BY:	DATE:
MODIFIED BY: rnbritt	DATE: 09-08-05
CHECKED BY:	DATE:
FILE SPEC.: details/rnbritt/misc/steelpipegate.dgn	

C:\TIME\PROJECTS\CON\CON\USER\NAME\