

**This electronic collection of documents is provided
for the convenience of the user
and is Not a Certified Document –**

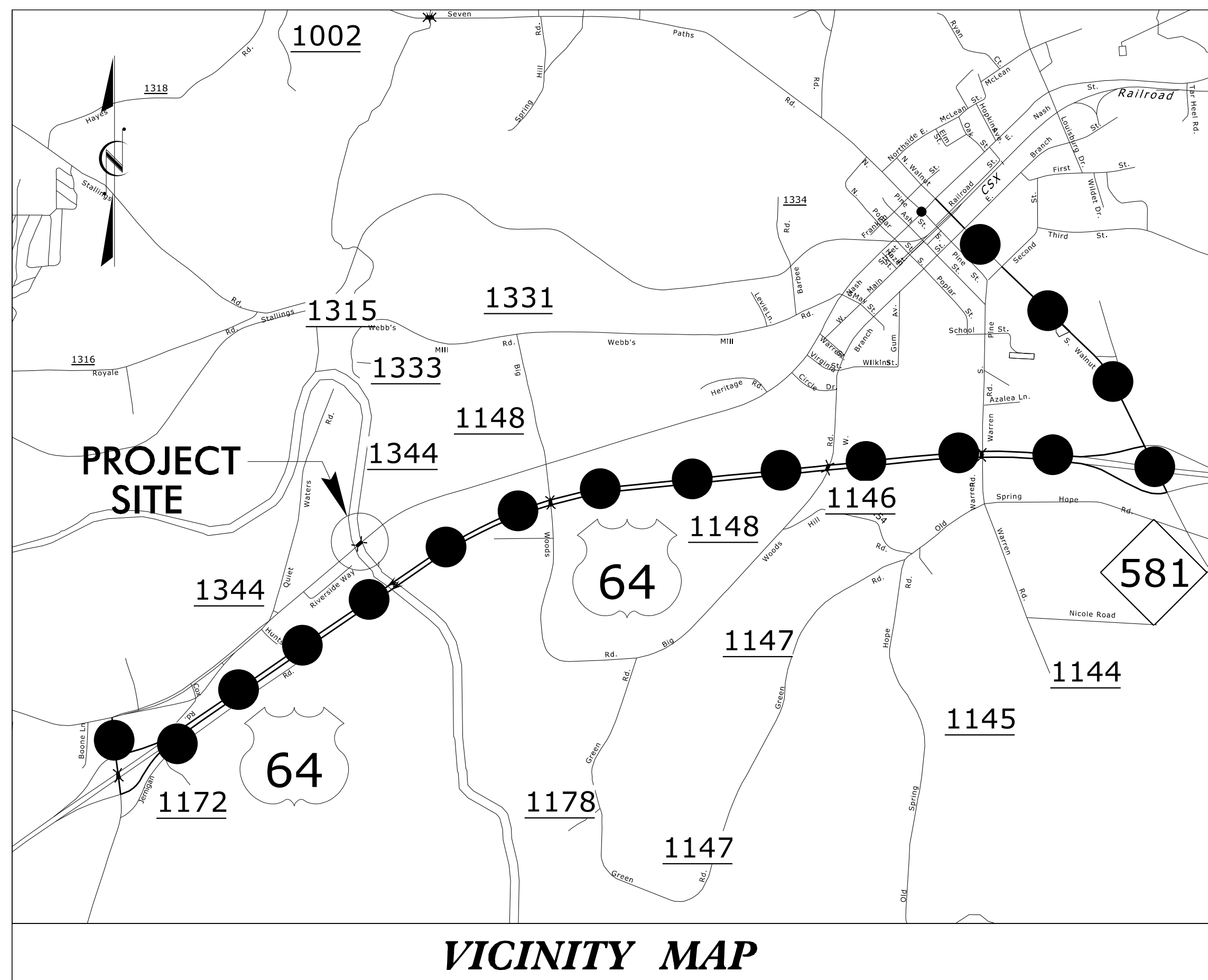
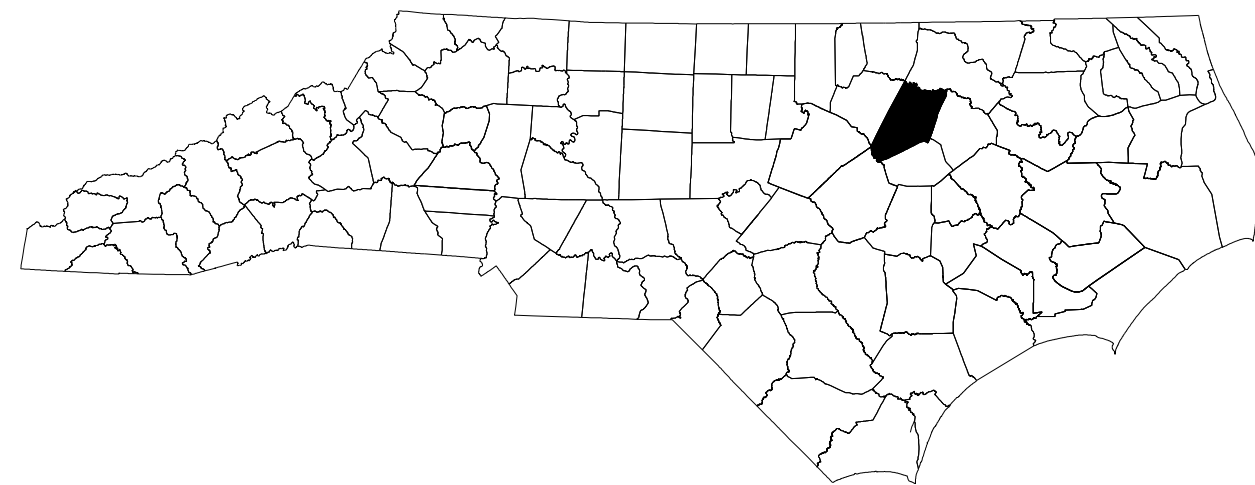
**The documents contained herein were originally issued
and sealed by the individuals whose names and license
numbers appear on each page, on the dates appearing
with their signature on that page.**

**This file or an individual page
shall not be considered a certified document.**

STATE OF NORTH CAROLINA
DIVISION OF HIGHWAYS

TRANSPORTATION MANAGEMENT PLAN

NASH COUNTY



VICINITY MAP

**LOCATION: BRIDGE NO. 29 OVER
TAR RIVER ON US 64 ALT**

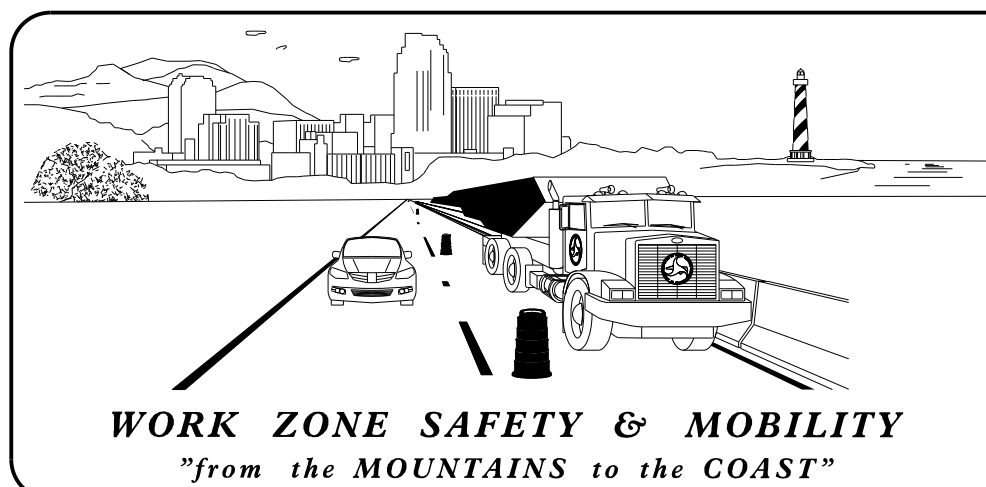
● — ● — ● OFFSITE DETOUR ROUTE

INDEX OF SHEETS

SHEET NO.	TITLE
TMP-1	TITLE SHEET, VICINITY MAP, AND INDEX OF SHEETS
TMP-1A	LIST OF APPLICABLE ROADWAY STANDARD DRAWINGS AND LEGEND
TMP-1B	TRANSPORTATION OPERATIONS PLAN: (MANAGEMENT STRATEGIES, GENERAL NOTES, LOCAL NOTES, AND TEMPORARY TRAFFIC CONTROL PHASING)
TMP-2	NO SHEET
TMP-3	OFFSITE DETOUR
TMP-4	OFFSITE DETOUR - INSET A

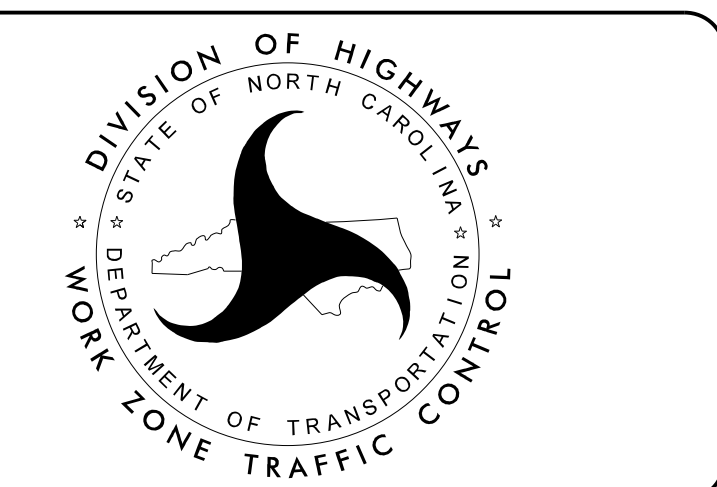
SHEET NO.
TMP-1

7/1/2022 Ms\2018\251801945\23 B-5670\Traffic\TrafficControl\TCP\B5670_TC_TMP_01.dgn User:bryan.hough



N.C.D.O.T. WORK ZONE TRAFFIC CONTROL
1561 MAIL SERVICE CENTER (MSC) RALEIGH, NC 27699-1561
750 N. GREENFIELD PARKWAY, GARNER, NC 27529 (DELIVERY)
PHONE: (919) 773-2800 FAX: (919) 771-2745

J.E. HUMMER, PHD, PE STATE TRAFFIC MANAGEMENT ENGINEER
D. A. PARKER, P.E. TRAFFIC CONTROL PROJECT ENGINEER
SPENCER JENNINGS TRAFFIC CONTROL PROJECT DESIGN ENGINEER
WILLIAM DEBREW TRAFFIC CONTROL DESIGN ENGINEER



KCI ASSOCIATES OF N.C.
CIVIL ENGINEERS
ENVIRONMENTAL - CEI
LAND SURVEYING
SUBSURFACE UTILITY ENGINEERING
4505 FALLS OF NEUSE ROAD
SUITE 400
RALEIGH, NORTH CAROLINA 27609
(919) 783-9214
WWW.KCI.COM

DOCUMENT NOT CONSIDERED FINAL
UNLESS ALL SIGNATURES COMPLETED

APPROVED: 8/16/2022
DATE: _____

SEAL

TIP PROJECT: B-5670

ROADWAY STANDARD DRAWINGS

THE FOLLOWING ROADWAY STANDARDS AS SHOWN IN "ROADWAY STANDARD DRAWINGS" - PROJECT SERVICES UNIT - N.C. DEPARTMENT OF TRANSPORTATION - RALEIGH, N.C., DATED JANUARY 2018 ARE APPLICABLE TO THIS PROJECT AND BY REFERENCE HEREBY ARE CONSIDERED A PART OF THESE PLANS:

STD. NO.	TITLE
1101.01	WORK ZONE ADVANCE WARNING SIGNS
1101.02	TEMPORARY LANE CLOSURES
1101.03	TEMPORARY ROAD CLOSURES
1101.04	TEMPORARY SHOULDER CLOSURES
1101.05	WORK ZONE VEHICLE ACCESSES
1101.11	TRAFFIC CONTROL DESIGN TABLES
1110.01	STATIONARY WORK ZONE SIGNS
1110.02	PORTABLE WORK ZONE SIGNS
1115.01	FLASHING ARROW BOARDS
1130.01	DRUM
1135.01	CONES
1145.01	BARRICADES
1150.01	FLAGGING DEVICES
1160.01	TEMPORARY CRASH CUSHION
1165.01	WORK VEHICLE LIGHTING SYSTEMS AND TMA DELINEATION
1170.01	POSITIVE PROTECTION
1180.01	SKINNY-DRUM
1205.01	PAVEMENT MARKINGS - LINE TYPES AND OFFSETS
1205.02	PAVEMENT MARKINGS - TWO-LANE AND MULTI-LANE ROADWAYS
1205.04	PAVEMENT MARKINGS - INTERSECTIONS
1205.05	PAVEMENT MARKINGS - TURN LANES
1205.08	PAVEMENT MARKINGS - SYMBOLS AND WORD MESSAGES
1205.12	PAVEMENT MARKINGS - BRIDGES
1250.01	RAISED PAVEMENT MARKERS - INSTALLATION SPACING
1251.01	RAISED PAVEMENT MARKERS - PERMANENT AND TEMPORARY
1261.01	GUARDRAIL AND BARRIER DELINEATORS - INSTALLATION SPACING
1261.02	GUARDRAIL AND BARRIER DELINEATORS - TYPES AND MOUNTING
1262.01	GUARDRAIL END DELINEATION
1264.01	OBJECT MARKERS - TYPES
1264.02	OBJECT MARKERS - INSTALLATION

LEGEND

GENERAL

- DIRECTION OF TRAFFIC FLOW
- EXIST. PVMT.
- NORTH ARROW
- PROPOSED PVMT.

- WORK AREA
- REMOVAL

PAVEMENT MARKINGS

- EXISTING LINES
- TEMPORARY LINES

TRAFFIC CONTROL DEVICES

- BARRICADE (TYPE III)
- DRUM
- FLAGGER

TEMPORARY SIGNING

- PORTABLE SIGN
- STATIONARY SIGN
- STATIONARY OR PORTABLE SIGN

PAVEMENT MARKERS

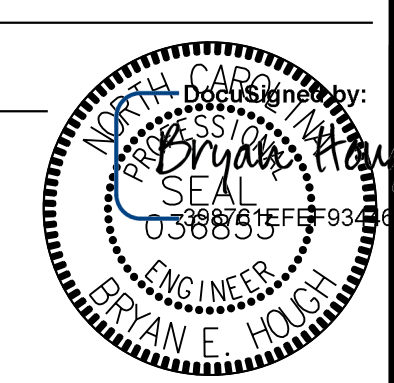
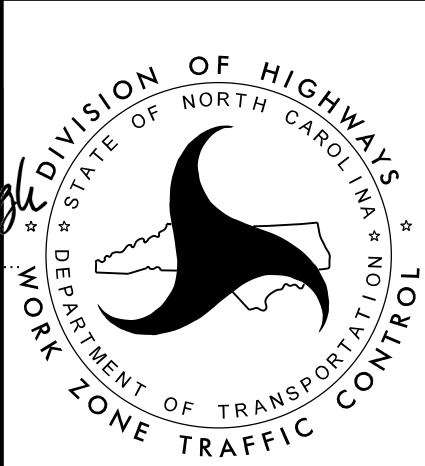
- CRYSTAL/CRYSTAL
- CRYSTAL/RED
- YELLOW/YELLOW

PAVEMENT MARKING SYMBOLS

- PAVEMENT MARKING SYMBOLS

\$\$\$\$\$SYTIME\$\$\$\$\$
\$\$\$\$\$DN\$\$\$\$\$
\$\$\$\$\$SERNAME\$\$\$\$\$
\$\$\$\$\$

KCI
 Engineers • Planners • Scientists • Construction Managers
 4265 Falls of Neuse Road, Suite 400
 Raleigh, NC 27609-4270
 Phone (919) 783-9214 • Fax (919) 783-9266

APPROVED: _____ DATE: 8/16/2022 SEAL			ROADWAY STANDARD DRAWINGS & LEGEND
DOCUMENT NOT CONSIDERED FINAL UNLESS ALL SIGNATURES COMPLETED			

PROJ. REFERENCE NO.	SHEET NO.
B-5670	TMP-1B

MANAGEMENT STRATEGIES

1. TWO SHORT TERM CHANGEABLE MESSAGE SIGNS HAVE BEEN INCLUDED IN THE CONTRACT TO BE USED FOR ONE WEEK PRIOR TO ROAD CLOSURE AT THE DISCRETION OF THE ENGINEER.
2. CLOSE ALT US 64 AND DETOUR TRAFFIC OFF-SITE VIA NC 231, US 64, AND NC 581.
3. LOCAL ACCESS TO ALL RESIDENCES AND BUSINESSES WILL BE MAINTAINED BETWEEN CLOSURE POINTS AT ALL TIMES DURING CONSTRUCTION.

LOCAL NOTES

1. THE ENGINEER SHALL COORDINATE WITH COUNTY EMS AND PUBLIC SCHOOLS THIRTY (30) CALENDAR DAYS PRIOR TO ROAD CLOSURE.

GENERAL NOTES

CHANGES MAY BE REQUIRED WHEN PHYSICAL DIMENSIONS IN THE DETAIL DRAWINGS, STANDARD DETAILS, AND ROADWAY DETAILS ARE NOT ATTAINABLE TO MEET FIELD CONDITIONS OR RESULT IN DUPLICATE OR UNDESIRED OVERLAPPING OF DEVICES. MODIFICATION MAY INCLUDE: MOVING, SUPPLEMENTING, COVERING, OR REMOVAL OF DEVICES AS DIRECTED BY THE ENGINEER.

THE FOLLOWING GENERAL NOTES APPLY AT ALL TIMES FOR THE DURATION OF THE CONSTRUCTION PROJECT EXCEPT WHEN OTHERWISE NOTED IN THE PLAN OR DIRECTED BY THE ENGINEER.

TRAFFIC PATTERN ALTERATIONS

- A) NOTIFY THE ENGINEER THIRTY (30) CALENDAR DAYS PRIOR TO ANY TRAFFIC PATTERN ALTERATION.

SIGNING

- B) PROVIDE SIGNING AND DEVICES REQUIRED TO CLOSE THE ROAD ACCORDING TO THE ROADWAY STANDARD DRAWINGS AND TRAFFIC MANAGEMENT PLANS.

PROVIDE SIGNING REQUIRED FOR THE OFF-SITE DETOUR ROUTE AS SHOWN IN THE TRAFFIC MANAGEMENT PLANS.

- C) COVER OR REMOVE ALL SIGNS AND DEVICES REQUIRED TO CLOSE THE ROAD WHEN ROAD CLOSURE IS NOT IN OPERATION.

COVER OR REMOVE ALL SIGNS REQUIRED FOR THE OFF-SITE DETOUR WHEN THE DETOUR IS NOT IN OPERATION.

- D) ENSURE ALL NECESSARY SIGNING IS IN PLACE PRIOR TO ALTERING ANY TRAFFIC PATTERN.

TRAFFIC CONTROL DEVICES

- E) PLACE TYPE III BARRICADES WITH "ROAD CLOSED" SIGN R11-2 ATTACHED OF SUFFICIENT LENGTH TO CLOSE ENTIRE ROADWAY.

PAVEMENT MARKINGS AND MARKERS

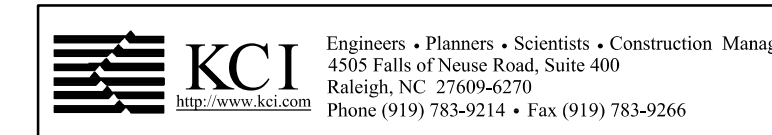
- F) INSTALL PAVEMENT MARKINGS AND PAVEMENT MARKERS ON THE FINAL SURFACE AS SHOWN IN THE FINAL PAVEMENT MARKING PLAN.
- G) TIE PROPOSED PAVEMENT MARKING LINES TO EXISTING PAVEMENT MARKING LINES.

PHASING

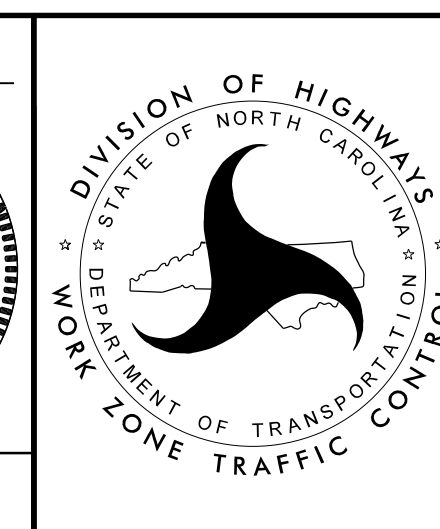
NOTE: BEFORE BEGINNING CONSTRUCTION THE CONTRACTOR SHALL PLACE ADVANCE WORK ZONE WARNING SIGNS ALONG ALT US 64, (SEE RSD 1101.01, SHEET 3 OF 3)

- STEP 1) USING ROADWAY STD. DRAWING 1101.03, SHEET 1 OF 9, CLOSE ALT US 64 AND DETOUR TRAFFIC OFF-SITE AS SHOWN ON TMP-3.
- STEP 2) REMOVE THE EXISTING STRUCTURE.
- STEP 3) CONSTRUCT THE PROPOSED STRUCTURE AND ROADWAY -L- UP TO BUT NOT INCLUDING THE FINAL LIFT OF SURFACE COURSE.
- STEP 4) PLACE THE FINAL LIFT OF SURFACE COURSE.
- STEP 5) PLACE FINAL PAVEMENT MARKINGS AND MARKERS ACCORDING TO THE FINAL PAVEMENT MARKING PLANS.
- STEP 6) REMOVE ALL WORK ZONE TRAFFIC CONTROL DEVICES AND SIGNING. OPEN ALT US 64 AND PLACE TRAFFIC ONTO THE FINAL PATTERN.

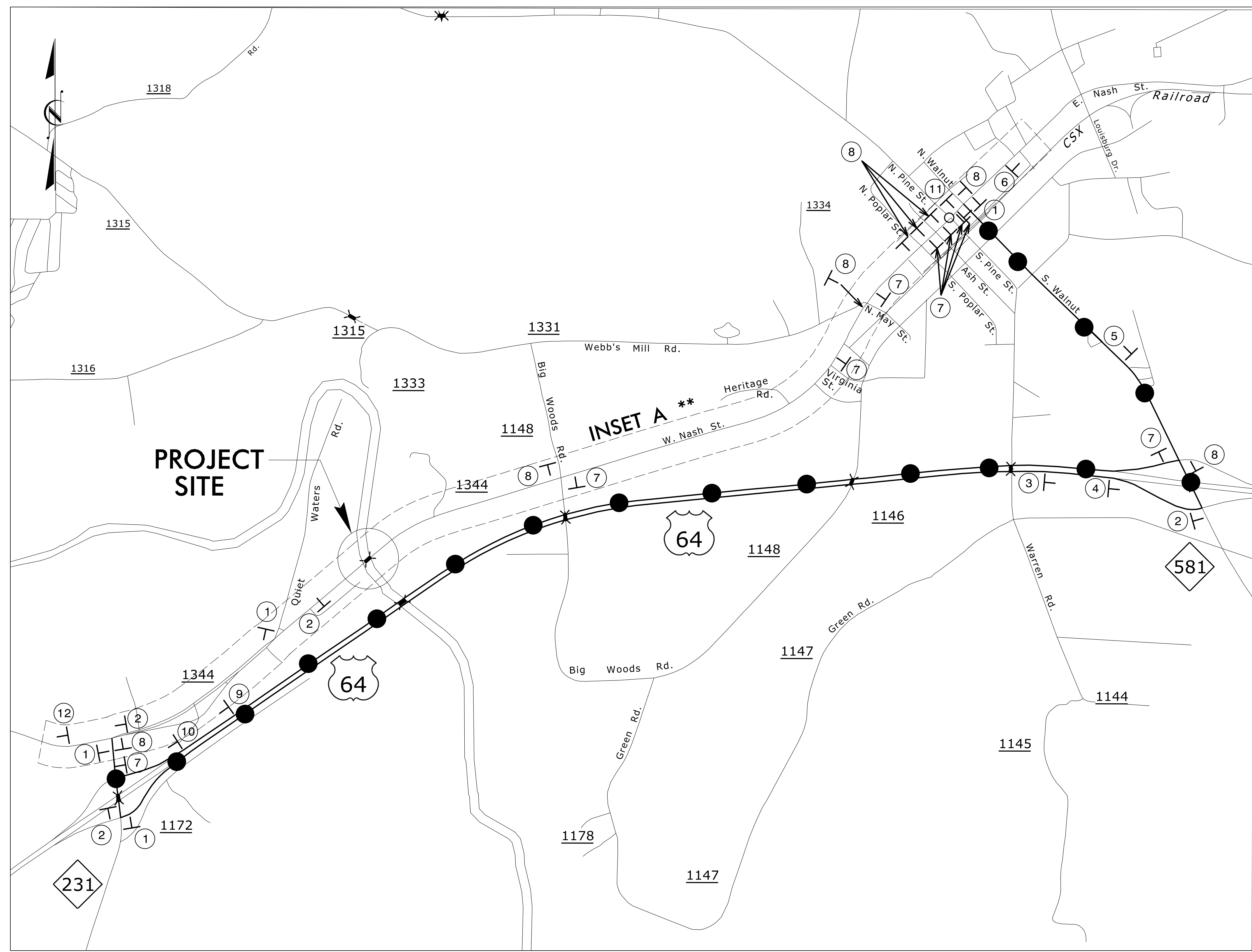
06-SEP-2022 20:49
 M:\2018\251801945\23 B-5670\Traffic\TrafficControl\TCP\B5670_TC_TMP_OIB.dgn
 \$\$\$USERNAME\$\$\$



APPROVED: _____
 DATE: 9/6/2022
 SEAL
 DOCUMENT NOT CONSIDERED FINAL
 UNLESS ALL SIGNATURES COMPLETED

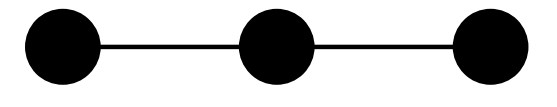


TRANSPORTATION
 OPERATIONS
 PLAN



** SEE SHEET TMP-4 FOR INSET A

DETOUR ROUTE



- NOTES:
1. REFER TO ROADWAY STANDARD DRAWING 1101.03, SHEET 1 OF 9 FOR APPLICABLE NOTES.
 2. ALL SIGN SPACING DIMENSIONS ARE APPROXIMATE. FIELD ADJUST AS NECESSARY OR AS DIRECTED BY THE ENGINEER.
 3. ALL DETOUR SIGN LOCATIONS ARE APPROXIMATE.

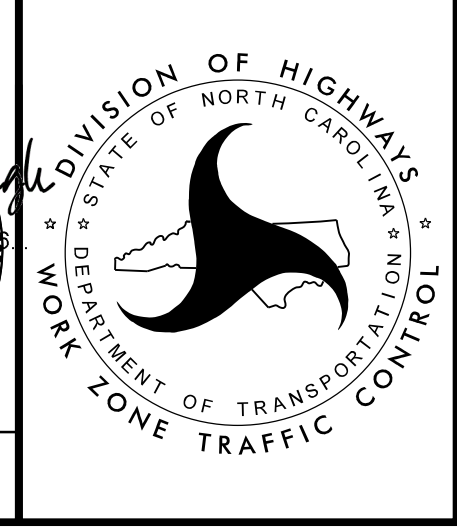
<p>DETOUR EAST ALT 64 →</p> <p>1</p>	<p>DETOUR EAST ALT 64 ←</p> <p>2</p>	<p>DETOUR EAST ALT 64 ↗</p> <p>3</p>
<p>DETOUR EAST ALT 64 ↘</p> <p>4</p>	<p>DETOUR EAST ALT 64 ↑</p> <p>5</p>	<p>DETOUR EAST ALT 64 END DETOUR</p> <p>6</p>
<p>DETOUR WEST ALT 64 →</p> <p>7</p>	<p>DETOUR WEST ALT 64 ←</p> <p>8</p>	<p>DETOUR WEST ALT 64 ↗</p> <p>9</p>
<p>DETOUR WEST ALT 64 ↘</p> <p>10</p>	<p>DETOUR WEST ALT 64 ↑</p> <p>11</p>	<p>DETOUR WEST ALT 64 END DETOUR</p> <p>12</p>

KCI Engineers • Planners • Scientists • Construction Managers
 4505 Falls of Neuse Road, Suite 400
 Raleigh, NC 27609-6270
 Phone (919) 783-9214 • Fax (919) 783-9266

APPROVED: _____
 DATE: 8/16/2022

SEAL

DOCUMENT NOT CONSIDERED FINAL
 UNLESS ALL SIGNATURES COMPLETED

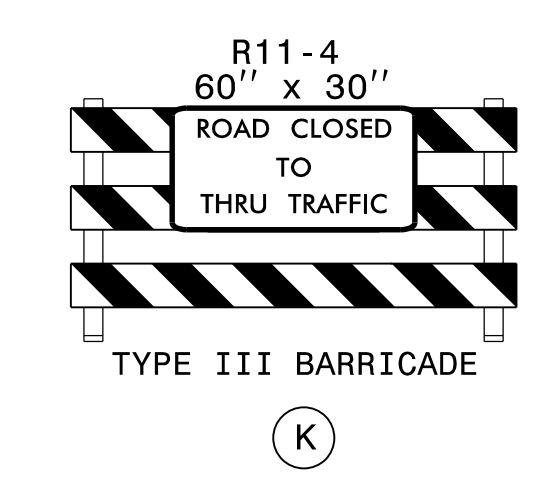
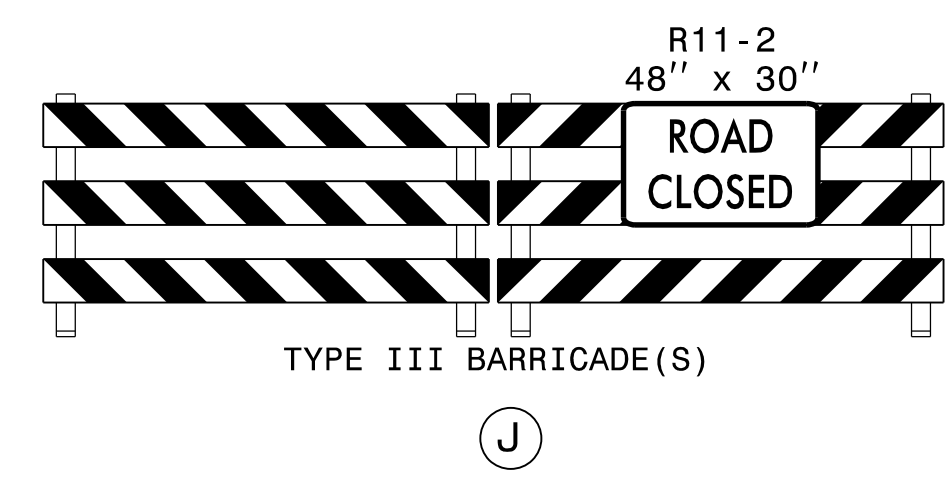
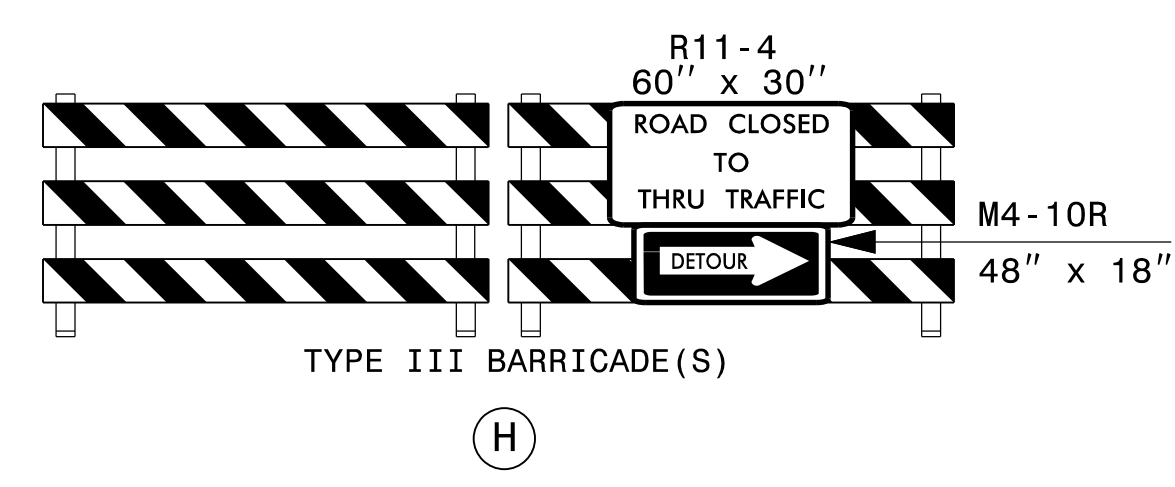
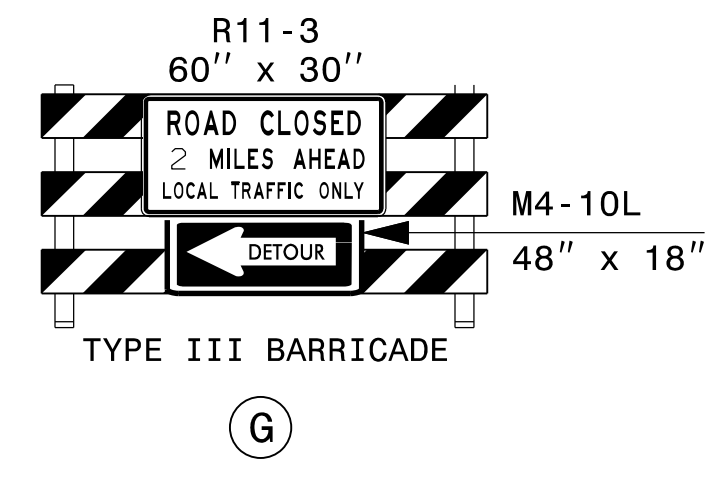
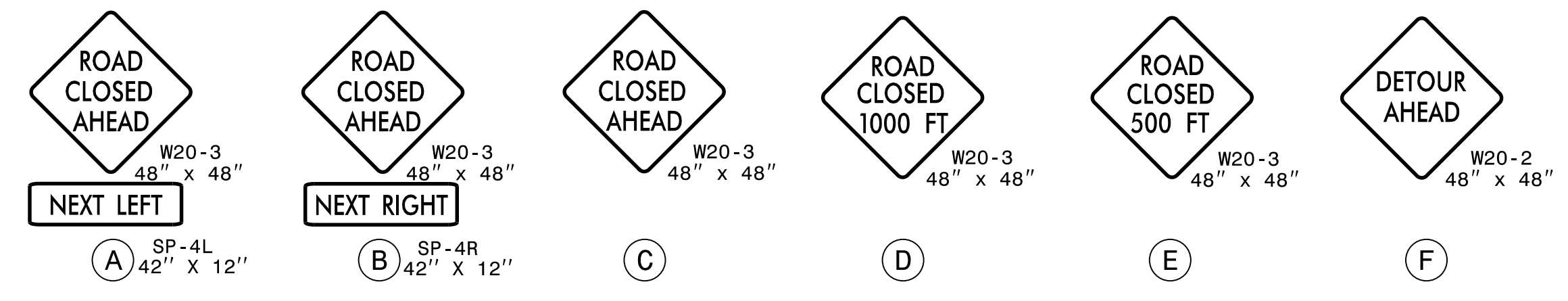
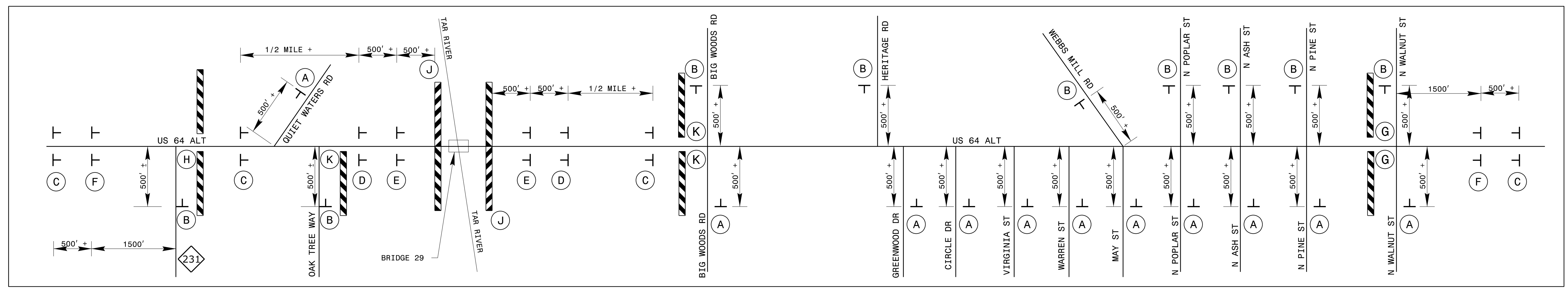


OFFSITE DETOUR ROUTE

STATE OF NORTH CAROLINA
 DEPARTMENT OF TRANSPORTATION
 WORK ZONE TRAFFIC CONTROL

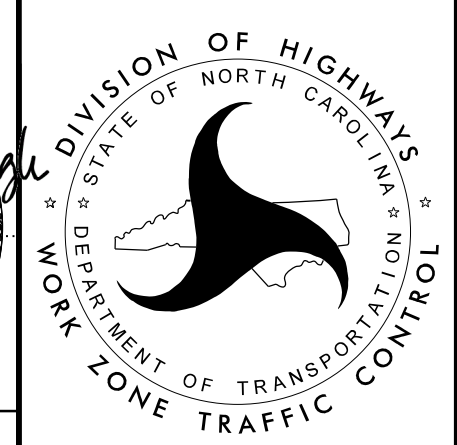
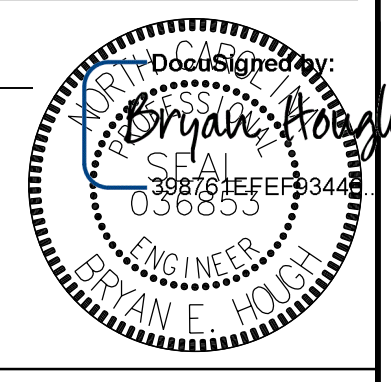
\$\$\$\$\$SYTIME\$\$\$\$\$
 \$\$\$\$\$\$DGN\$\$\$\$\$
 \$\$\$\$\$\$USERNAM\$\$\$\$\$

INSET A



NOTES:
 1. REFER TO ROADWAY STANDARD DRAWING 1101.03, SHEET 1 OF 9 FOR APPLICABLE NOTES.
 2. ALL SIGN SPACING DIMENSIONS ARE APPROXIMATE. FIELD ADJUST AS NECESSARY OR AS DIRECTED BY THE ENGINEER.
 3. ALL DETOUR SIGN LOCATIONS ARE APPROXIMATE.

APPROVED: _____
 DATE: 8/16/2022
 SEAL



KCI Engineers • Planners • Scientists • Construction Managers
 4505 Falls of Neuse Road, Suite 400
 Raleigh, NC 27609-6270
 Phone (919) 783-9214 • Fax (919) 783-9266

OFFSITE DETOUR ROUTE

30-JUN-2022 14:48
 M:\2018\251801945\23 B-5670\Traffic\TrafficControl\TCP\B5670_TC_TMP_04.dgn
 \$\$\$USERNAME\$\$\$