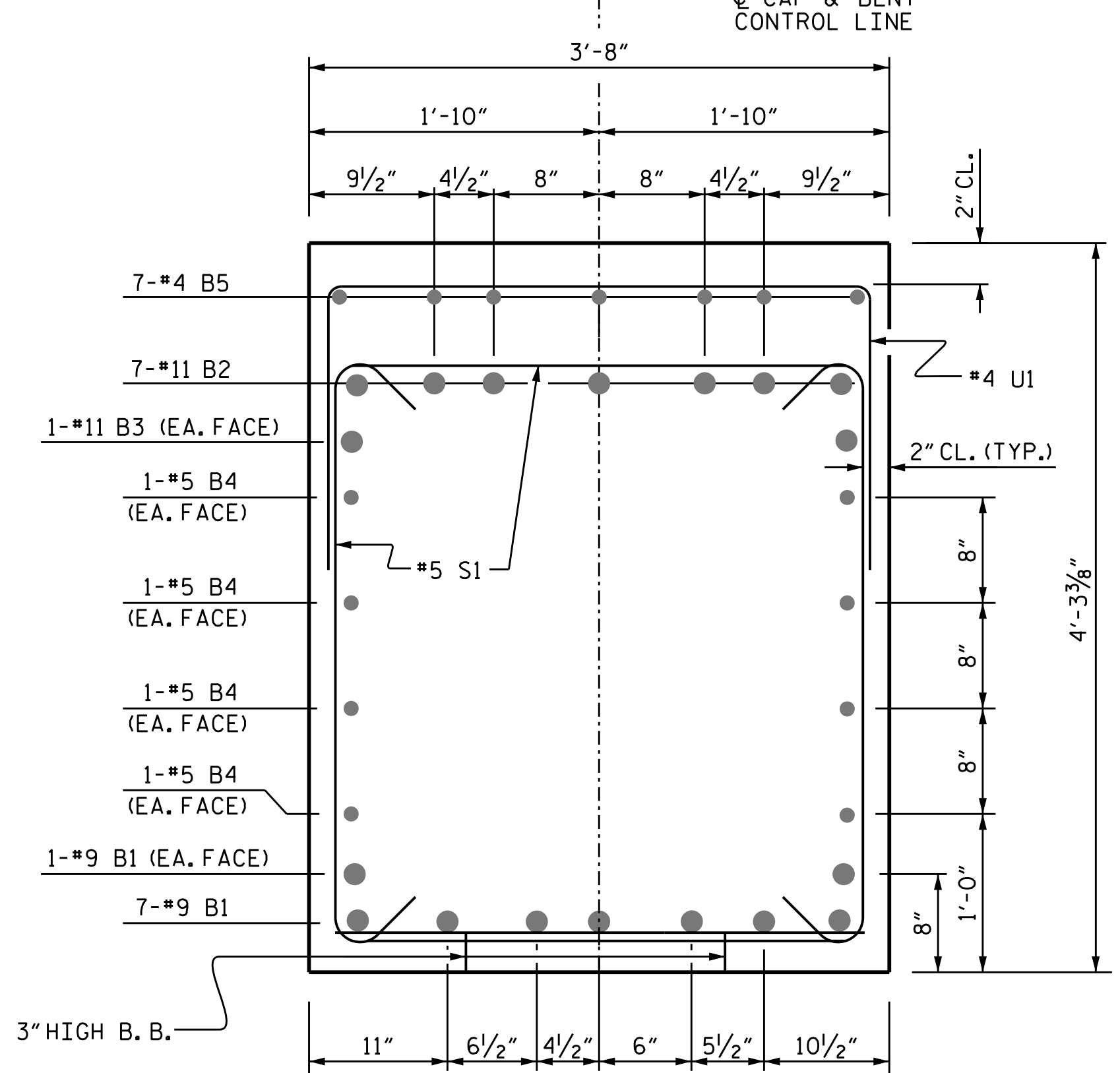
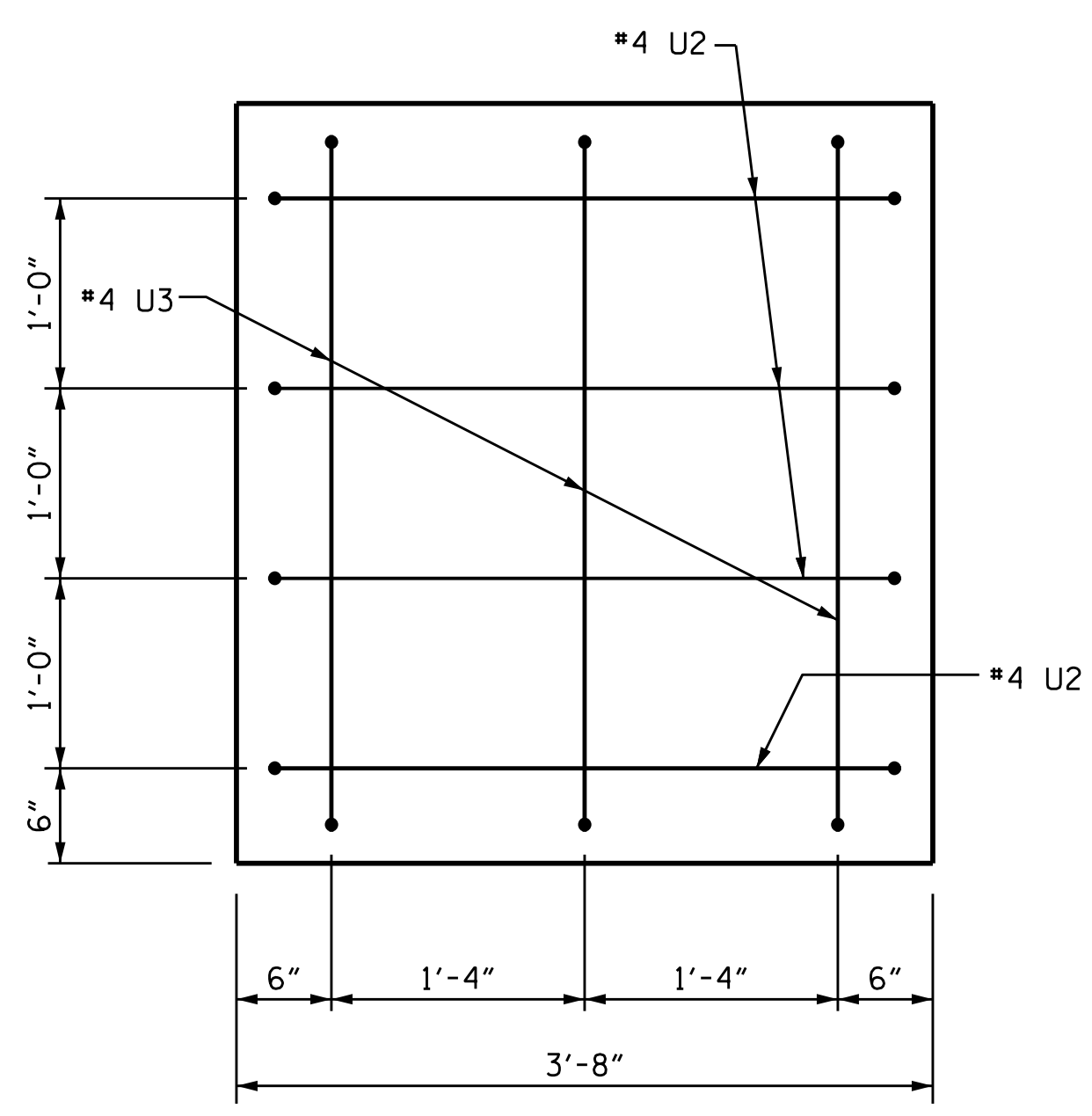


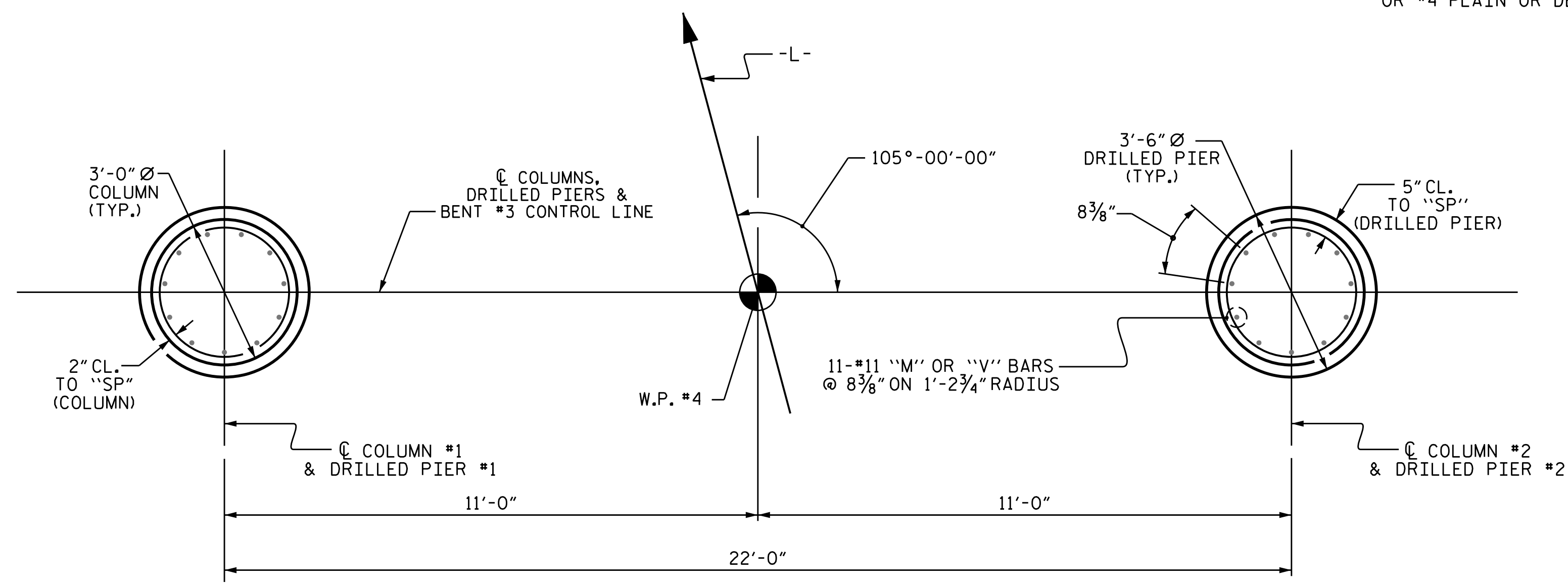
SECTION A-A



SECTION B-B

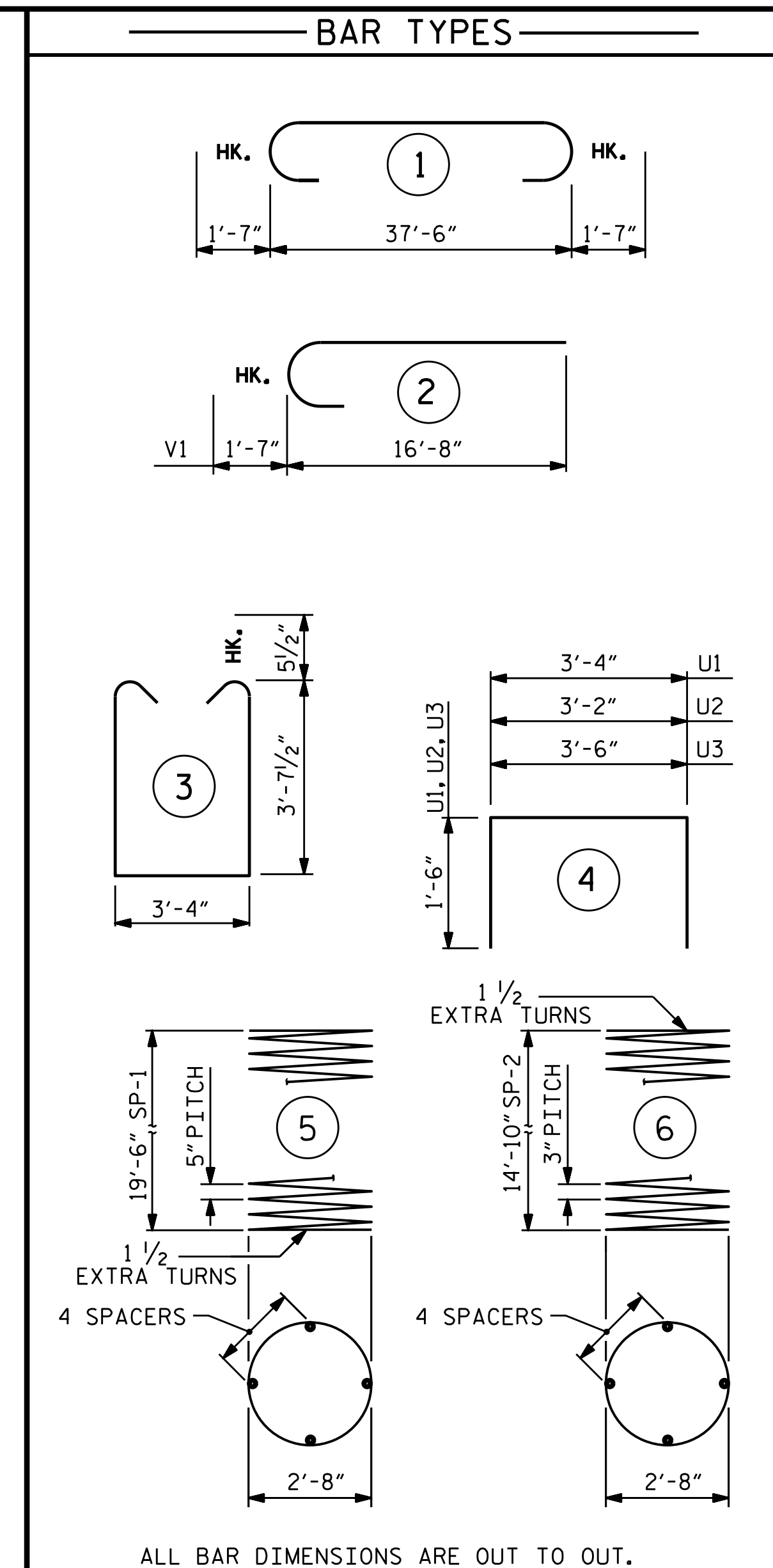


SECTION X-X
(TYPICAL BOTH ENDS)



PLAN OF COLUMNS AND DRILLED PIERS

(DIMENSIONS AND REINFORCING STEEL ARE TYPICAL FOR EACH COLUMN AND DRILLED PIER)



ALL BAR DIMENSIONS ARE OUT TO OUT.
 *** THE SP-1 SPIRAL REINFORCING STEEL SHALL BE W31 OR D-31 COLD DRAWN WIRE OR #5 PLAIN OR DEFORMED BAR.
 ** THE SP-2 SPIRAL REINFORCING STEEL SHALL BE W20 OR D-20 COLD DRAWN WIRE OR #4 PLAIN OR DEFORMED BAR.

BILL OF MATERIAL					
BENT 3					
BAR	NO.	SIZE	TYPE	LENGTH	WEIGHT
B1	9	#9	STR	37'-8"	1,153
B2	7	#11	STR	40'-8"	1,512
B3	2	#11	STR	37'-8"	400
B4	8	#5	STR	37'-8"	314
B5	7	#4	STR	15'-8"	73
M1	22	#11	STR	27'-10"	3253
S1	72	#5	3	11'-6"	864
U1	43	#4	4	6'-4"	182
U2	8	#4	4	6'-2"	33
U3	6	#4	4	6'-6"	26
V1	22	#11	2	18'-3"	2,133
REINFORCING STEEL					9,943 LBS.
SPIRAL COLUMN REINFORCING STEEL					
SP-1	2	***	5	399'-0"	832
SP-2	2	**	6	502'-0"	671
TOTAL SPIRAL COLUMN REINFORCING STEEL					1,503 LBS.
CLASS A CONCRETE BREAKDOWN					
POUR 2 (COLUMNS)				7.7	CU.YDS.
POUR 3 (CAP)				21.3	CU.YDS.
TOTAL CLASS A CONCRETE					29.0 CU.YDS.
3'-6" Ø DRILLED PIERS					
DRILLED PIER CONCRETE POUR 1 (DRILLED PIERS)					14.3 CU.YDS.

PROJECT NO. B-5670
 NASH COUNTY
 STATION: 16+98.00 -L-

SHEET 2 OF 2



STATE OF NORTH CAROLINA
 DEPARTMENT OF TRANSPORTATION
 RALEIGH
 SUBSTRUCTURE
 BENT #3

DRAWN BY: M.M. AHMED DATE: 06/22
 CHECKED BY: S. WANCE DATE: 06/22
 DESIGN ENGINEER OF RECORD: M.M. AHMED DATE: 07/2020

DOCUMENT NOT CONSIDERED
 FINAL UNLESS ALL
 SIGNATURES COMPLETED

REVISIONS						SHEET NO.
NO.	BY:	DATE:	NO.	BY:	DATE:	S-34
1			3			TOTAL SHEETS
2			4			40