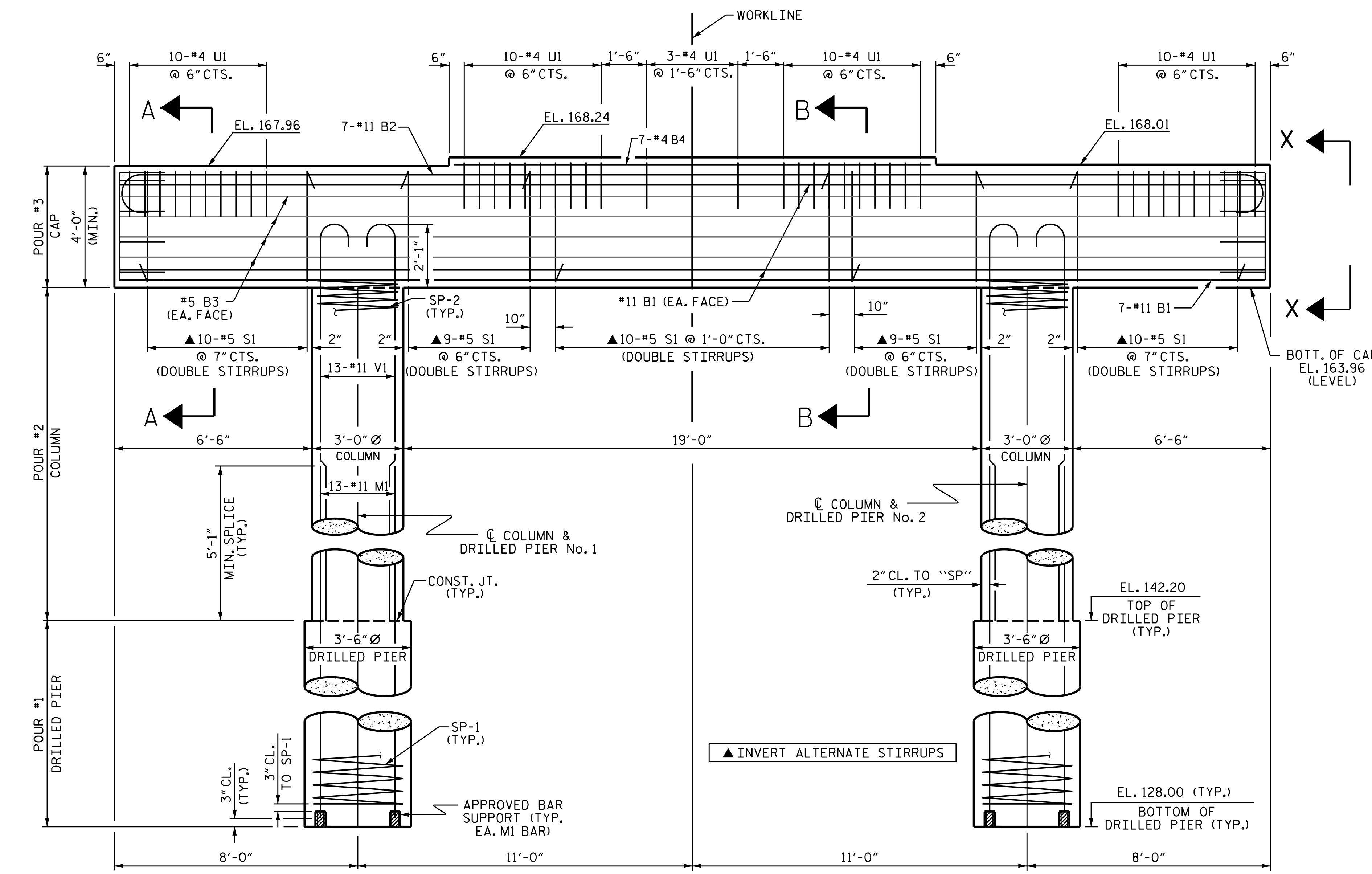


PLAN

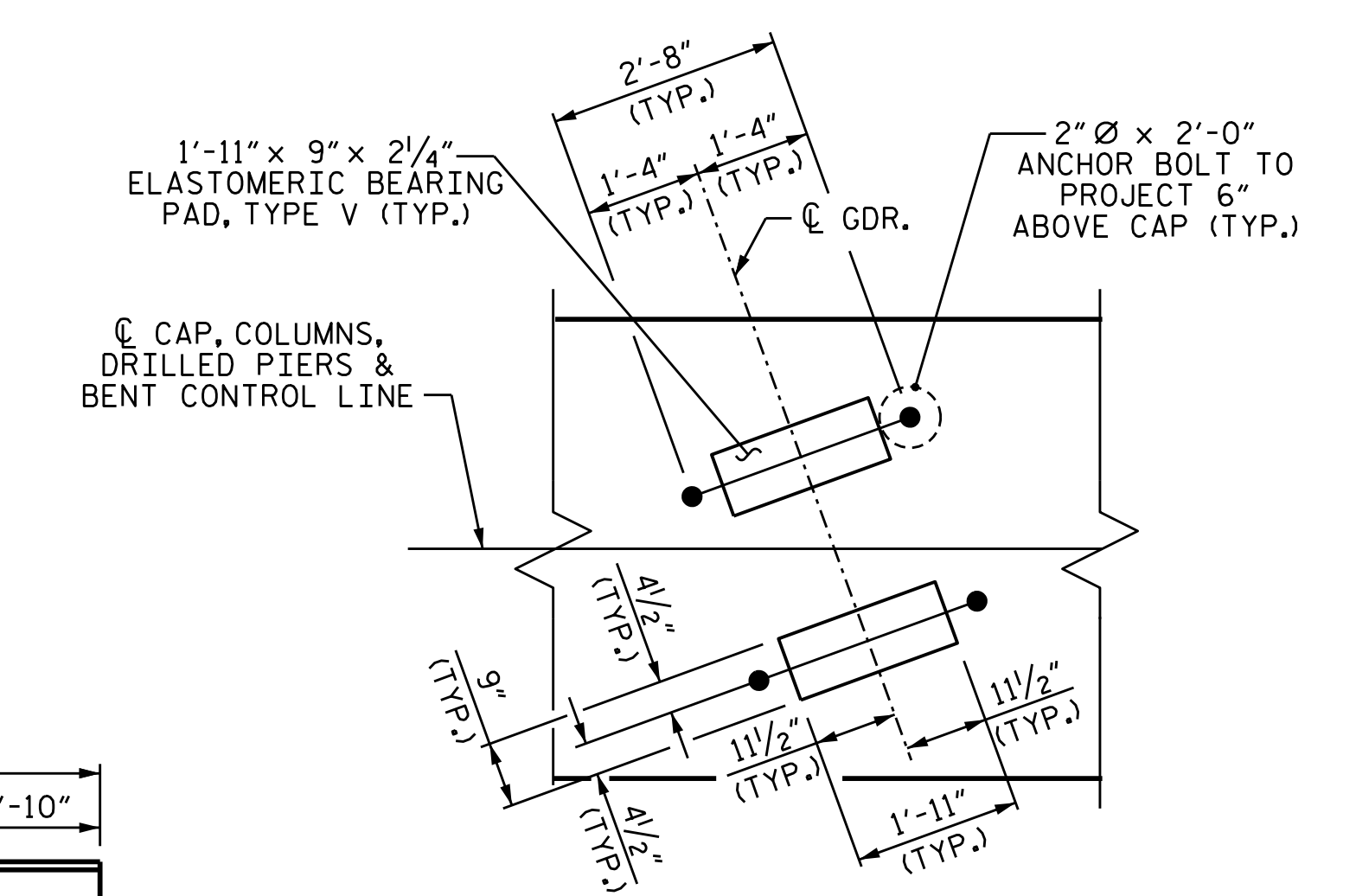


ELEVATION

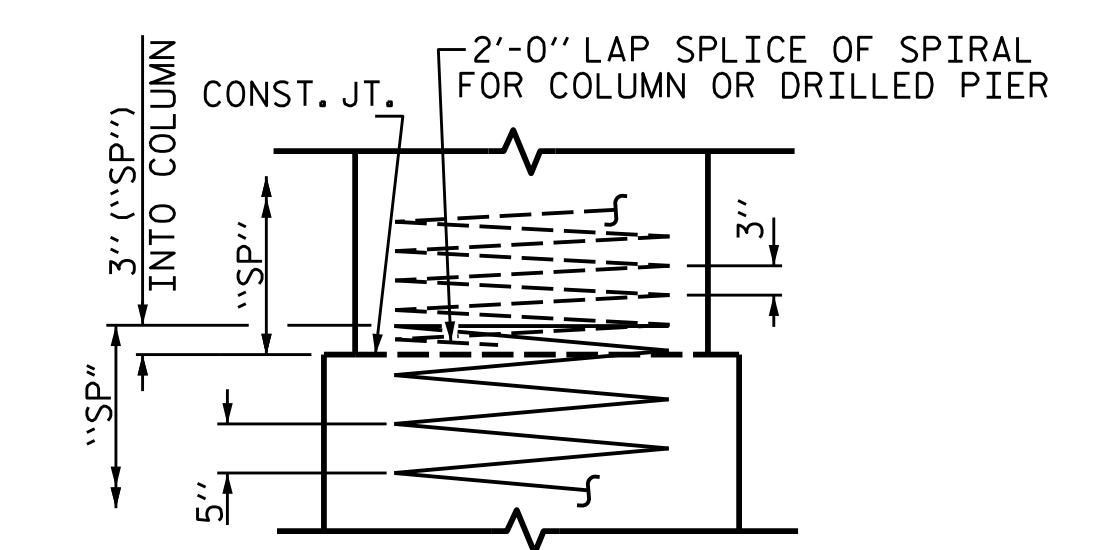
DIMENSIONS & REINFORCING STEEL ARE TYPICAL FOR EACH COLUMN & DRILLED PIER UNLESS OTHERWISE NOTED.

NOTES

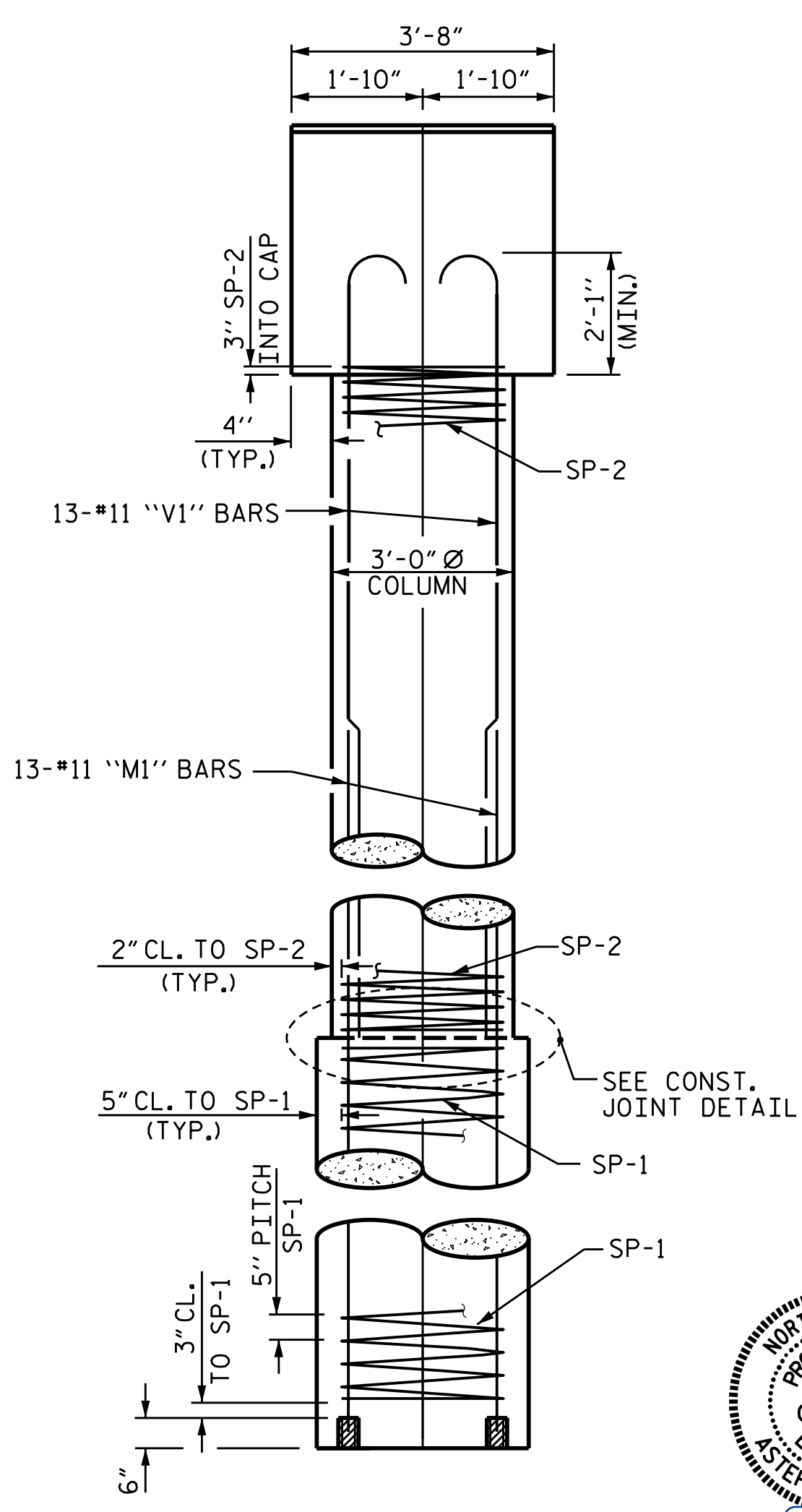
- STIRRUPS IN CAP MAY BE SHIFTED AS NECESSARY TO CLEAR ANCHOR BOLTS.
- HOOKS ON "V" BARS MAY BE TURNED AS NECESSARY FOR PLACING REINFORCING STEEL.
- ALL STEEL IN THE DRILLED PIERS IS INCLUDED IN THE PAY ITEMS FOR "REINFORCING STEEL" AND "SPIRAL COLUMN REINFORCING STEEL" OR "EPOXY COATED SPIRAL COLUMN REINFORCING STEEL".
- THE CONTRACTOR'S ATTENTION IS CALLED TO THE FACT THAT THE LONGITUDINAL REINFORCEMENT FOR THE DRILLED PIERS IS DETAILED WITH 3 FEET OF EXTRA LENGTH.
- SPLICING OF THE LONGITUDINAL BARS IN THE DRILLED PIER WILL NOT BE PERMITTED.
- FOR DRILLED PIER INSTALLATION INFORMATION, SEE PILE AND DRILLED PIER FOUNDATION TABLES, SHEET S-3.



DETAIL "A"
(TYP. EA. GDR.)



CONSTRUCTION JOINT DETAIL



END ELEVATION

PROJECT NO. B-5670
NASH COUNTY
STATION: 16+98.00 -L-

SHEET 1 OF 2



STATE OF NORTH CAROLINA
DEPARTMENT OF TRANSPORTATION
RALEIGH
SUBSTRUCTURE
BENT 2

DRAWN BY: M.M. AHMED DATE: 06/22
CHECKED BY: S. WANCE DATE: 06/22
DESIGN ENGINEER OF RECORD: M.M. AHMED DATE: 07/2020

REVISIONS						SHEET NO.
NO.	BY:	DATE:	NO.	BY:	DATE:	S-31
1			3			TOTAL SHEETS 40
2			4			