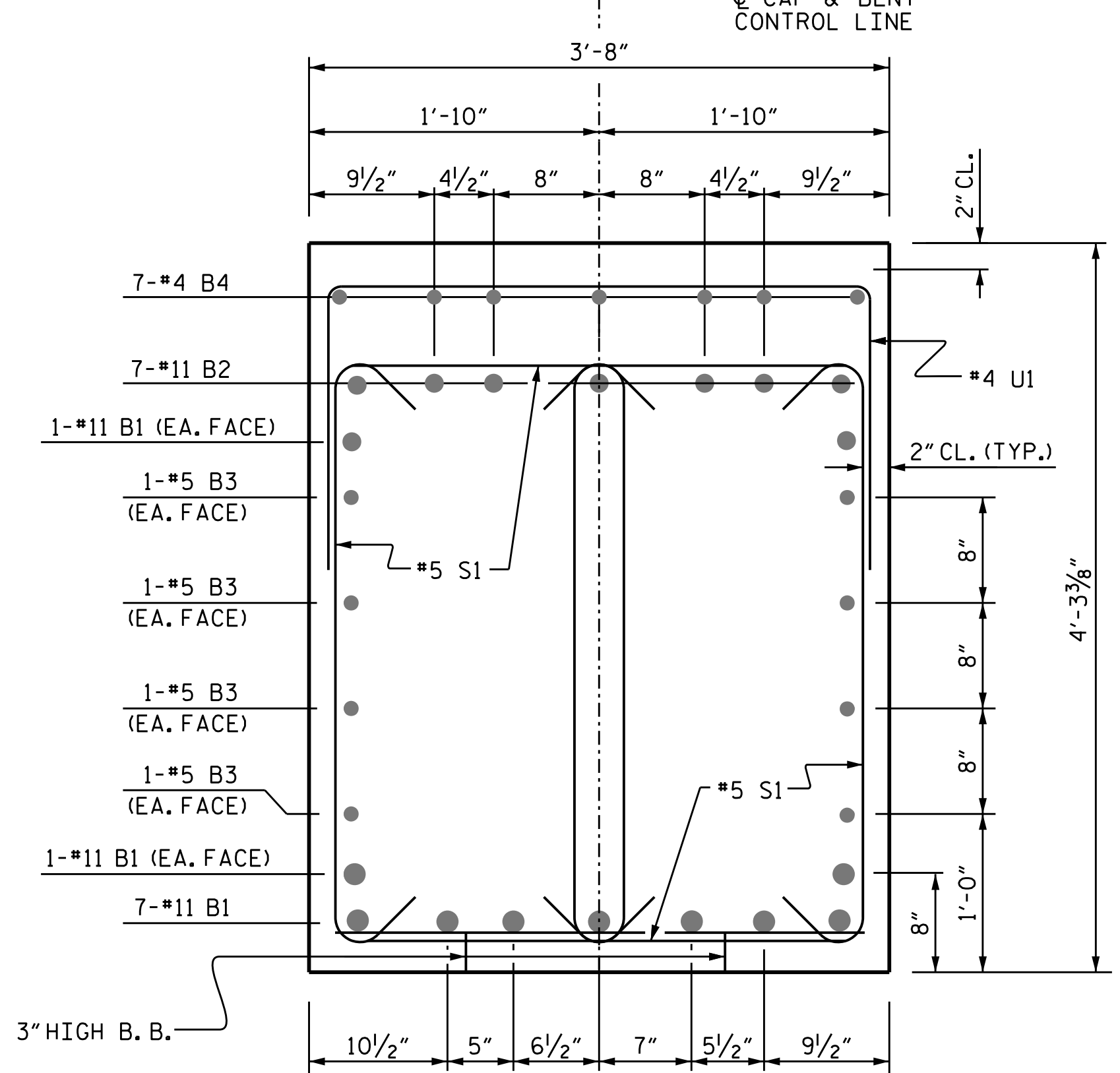
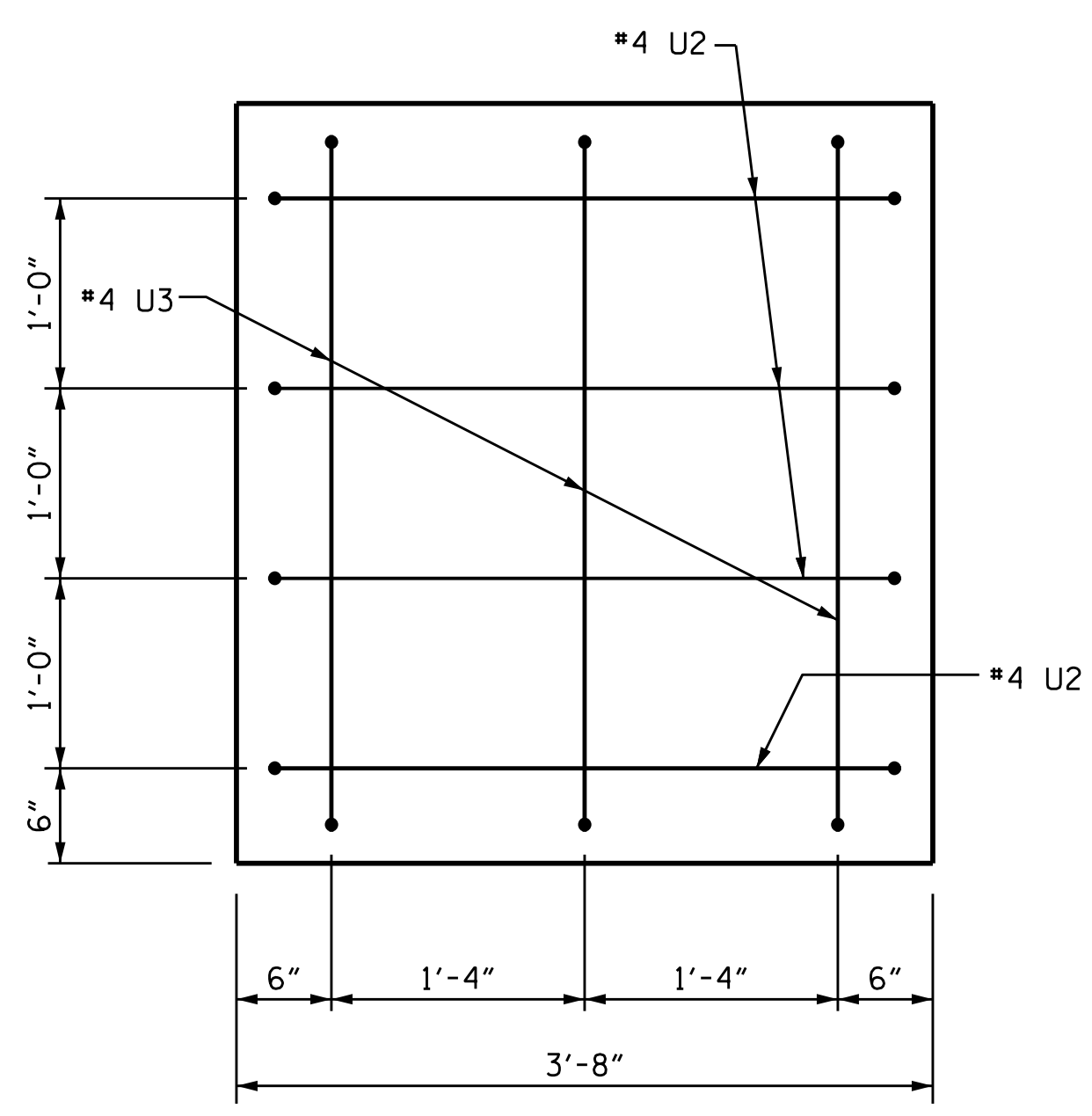


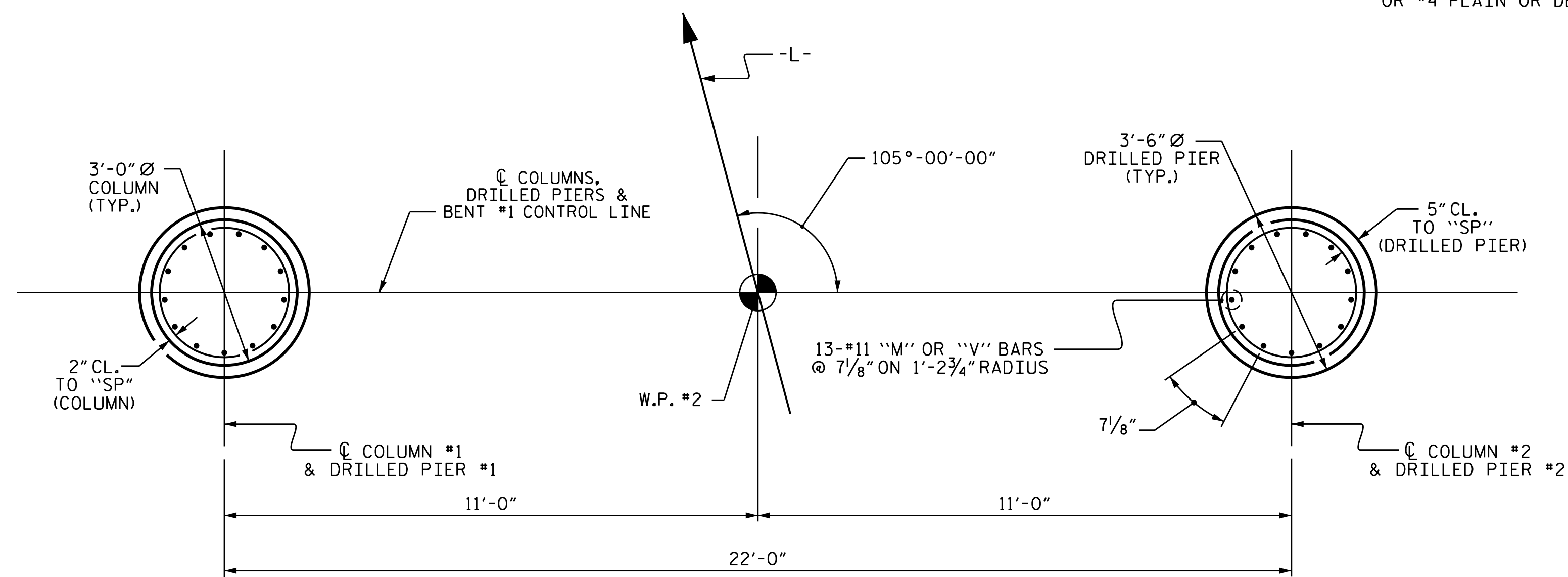
SECTION A-A



SECTION B-B

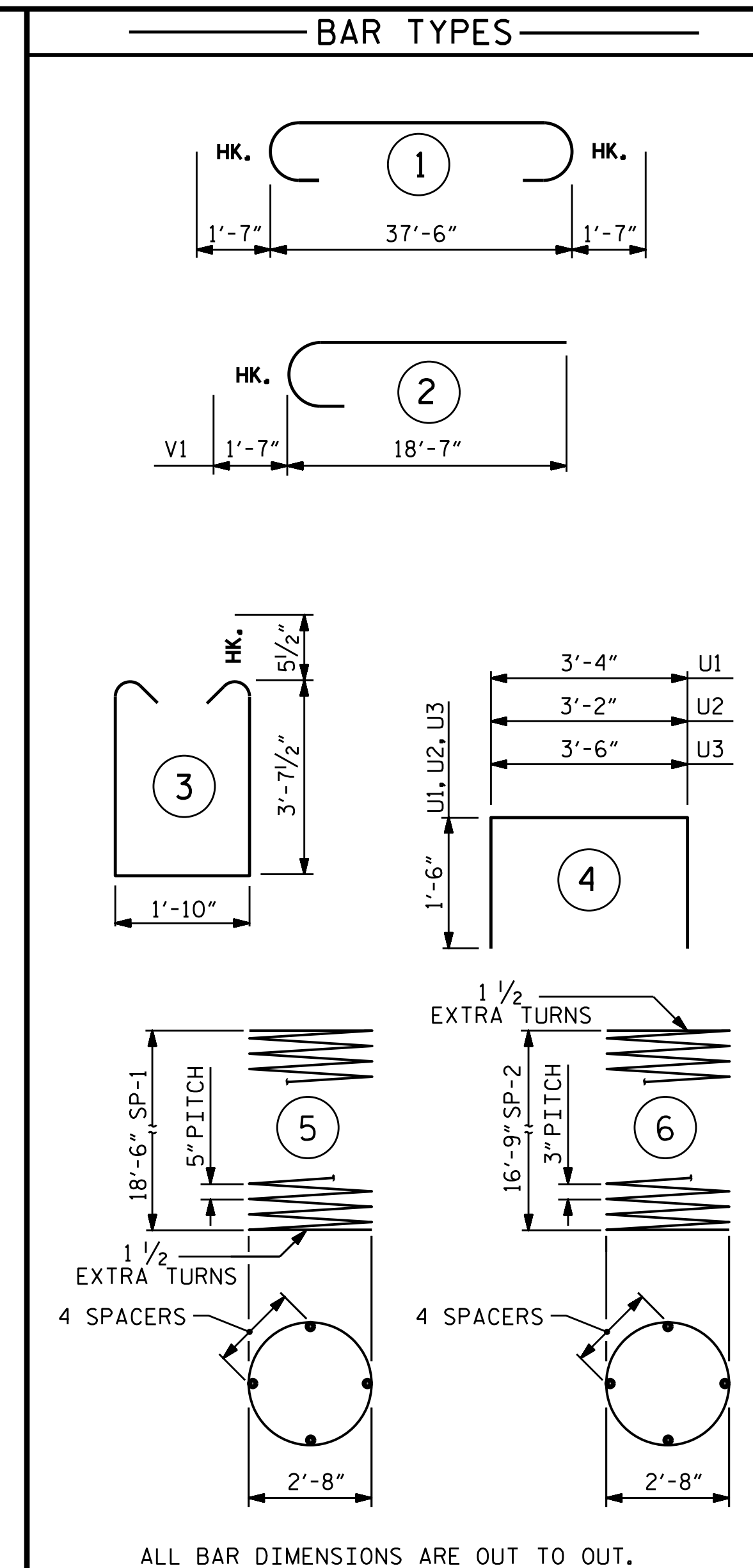


SECTION X-X  
(TYPICAL BOTH ENDS)



PLAN OF COLUMNS AND DRILLED PIERS

(DIMENSIONS AND REINFORCING STEEL ARE TYPICAL FOR EACH COLUMN AND DRILLED PIER)



ALL BAR DIMENSIONS ARE OUT TO OUT.

\*\*\* THE SP-1 SPIRAL REINFORCING STEEL SHALL BE W31 OR D-31 COLD DRAWN WIRE OR #5 PLAIN OR DEFORMED BAR.  
 \*\* THE SP-2 SPIRAL REINFORCING STEEL SHALL BE W20 OR D-20 COLD DRAWN WIRE OR #4 PLAIN OR DEFORMED BAR.

BILL OF MATERIAL					
BENT 1					
BAR	NO.	SIZE	TYPE	LENGTH	WEIGHT
B1	11	#11	STR	37'-8"	2,201
B2	7	#11	1	40'-8"	1,512
B3	8	#5	STR	37'-8"	314
B4	7	#4	STR	15'-8"	73
M1	26	#11	STR	26'-10"	3,707
S1	96	#5	3	10'-0"	1001
U1	43	#4	4	6'-4"	182
U2	8	#4	4	6'-2"	33
U3	6	#4	4	6'-6"	26
V1	26	#11	2	20'-2"	2,786
REINFORCING STEEL					11,835 LBS.
SPIRAL COLUMN REINFORCING STEEL					
SP-1	2	***	5	379'-0"	791
SP-2	2	**	6	566'-0"	756
TOTAL SPIRAL COLUMN REINFORCING STEEL					1,547 LBS.
CLASS A CONCRETE BREAKDOWN					
POUR 2 (COLUMNS)				8.7 CU.YDS.	
POUR 3 (CAP)				21.3 CU.YDS.	
TOTAL CLASS A CONCRETE				30.0 CU.YDS.	
3'-6" Ø DRILLED PIERS					
DRILLED PIER CONCRETE POUR 1 (DRILLED PIERS)				13.6 CU.YDS.	

PROJECT NO. B-5670  
 NASH COUNTY  
 STATION: 16+98.00 -L-

SHEET 2 OF 2



STATE OF NORTH CAROLINA  
 DEPARTMENT OF TRANSPORTATION  
 RALEIGH  
 SUBSTRUCTURE  
 BENT #1

DRAWN BY: M.M. AHMED DATE: 06/22  
 CHECKED BY: S. WANCE DATE: 06/22  
 DESIGN ENGINEER OF RECORD: M.M. AHMED DATE: 07/2020

DOCUMENT NOT CONSIDERED FINAL UNLESS ALL SIGNATURES COMPLETED

REVISIONS						SHEET NO.
NO.	BY:	DATE:	NO.	BY:	DATE:	S-30
1			3			TOTAL SHEETS
2			4			40