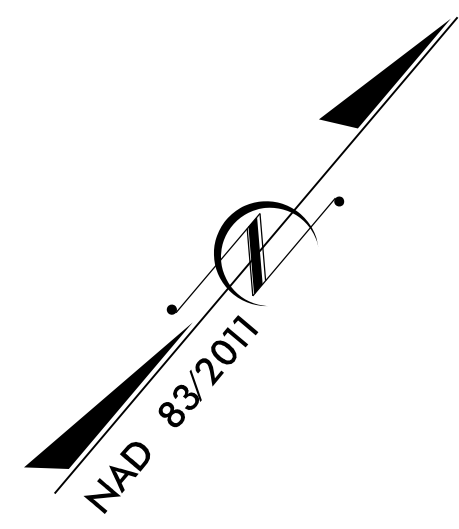
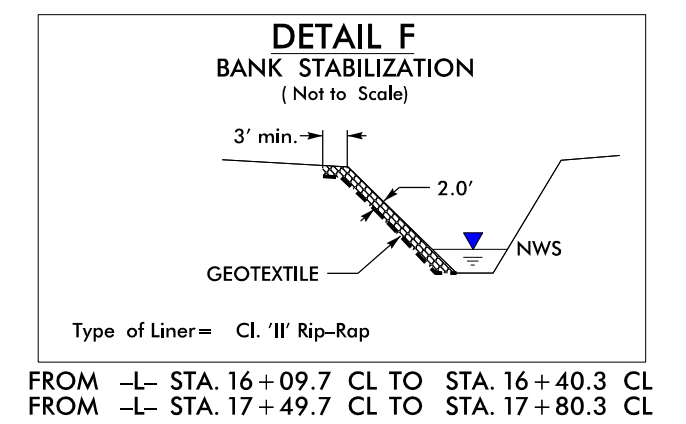
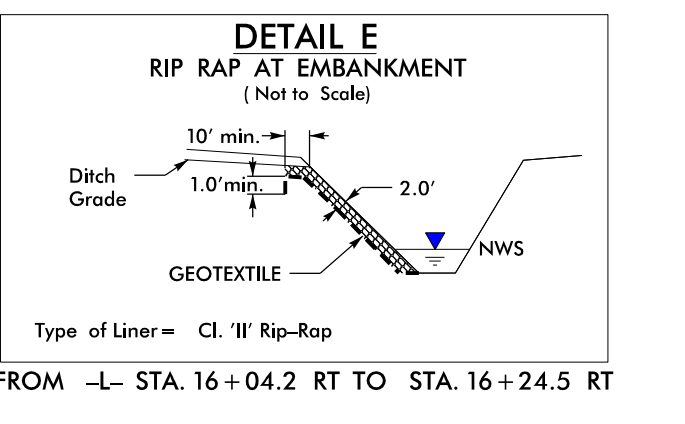
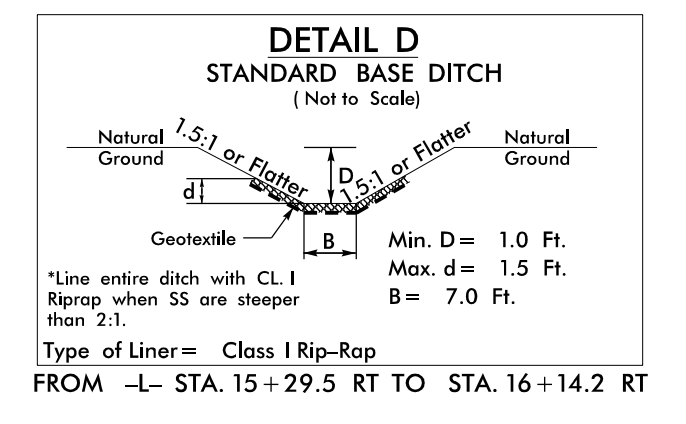
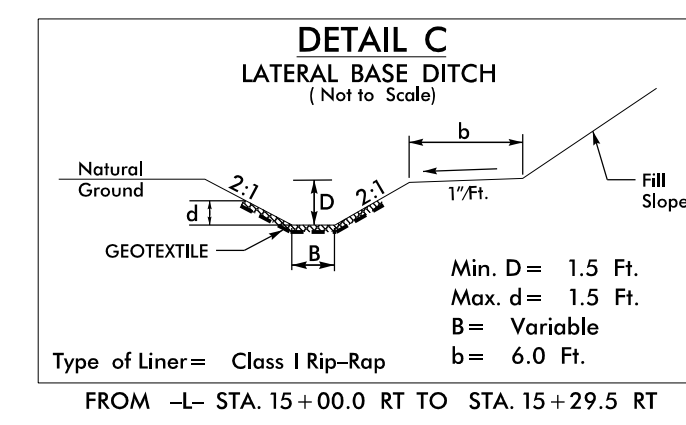
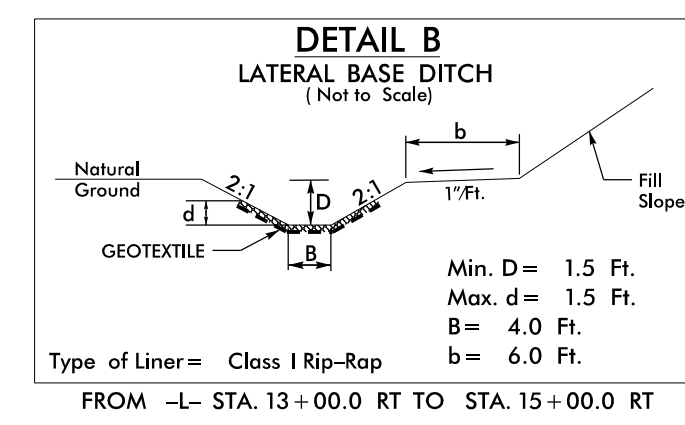
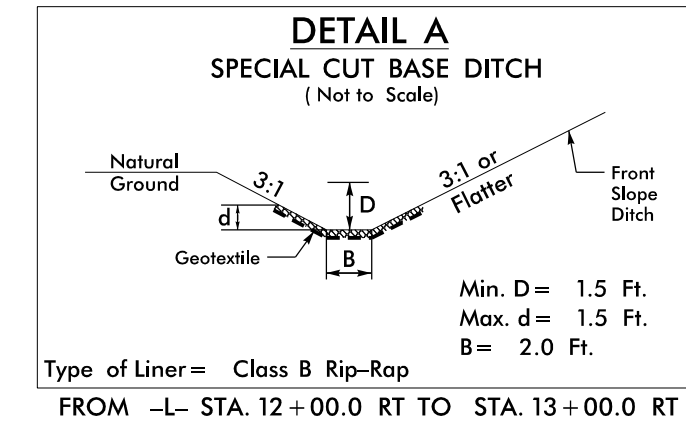
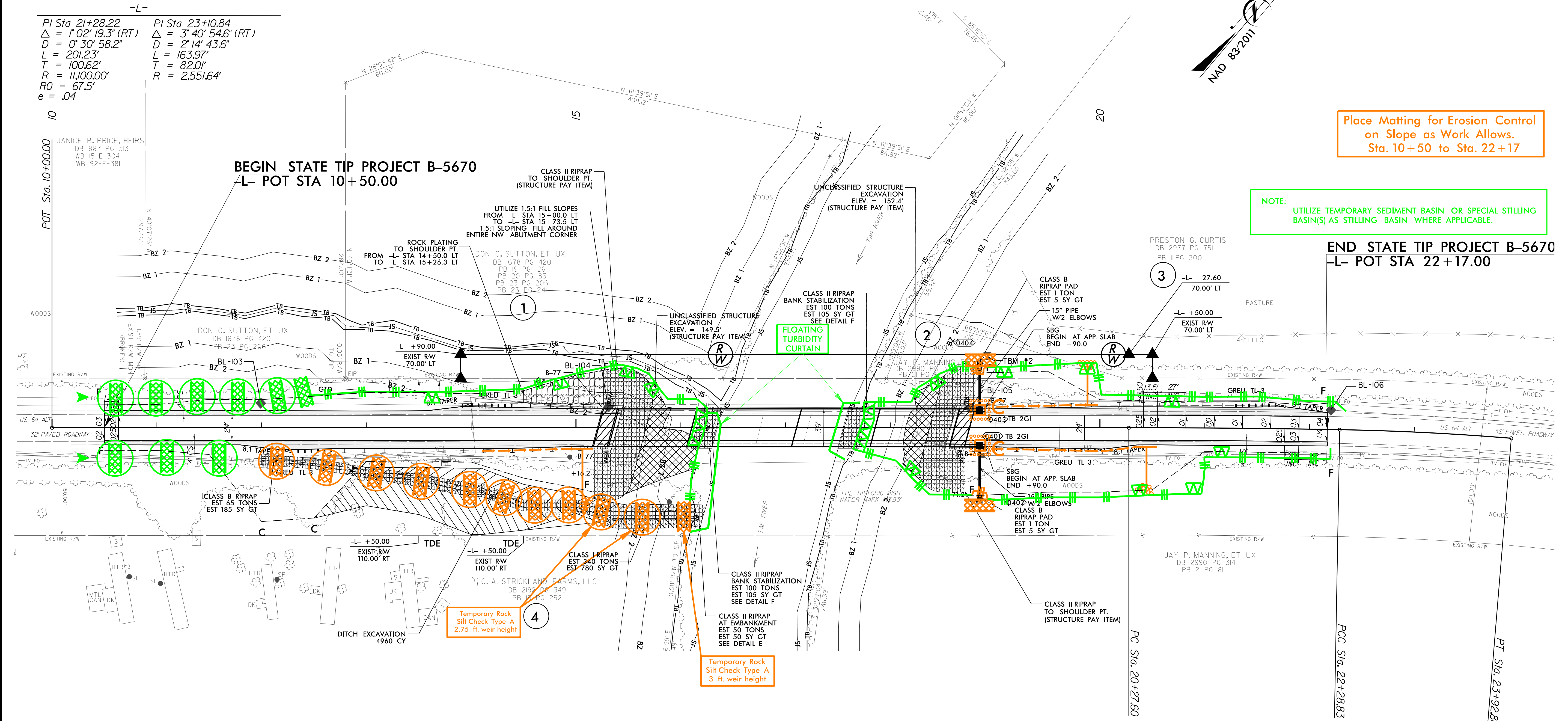


-L-  
 PI Sta 21+28.22    PI Sta 23+10.84  
 $\Delta = 1^{\circ}02'19.3''$  (RT)     $\Delta = 3^{\circ}40'54.6''$  (RT)  
 $D = 0^{\circ}30'58.2''$      $D = 2^{\circ}14'43.6''$   
 $L = 201.23'$      $L = 163.97'$   
 $T = 100.62'$      $T = 82.01'$   
 $R = 11,000.00'$      $R = 2,551.64'$   
 $RO = 67.5'$   
 $e = .04$



Place Matting for Erosion Control  
 on Slope as Work Allows.  
 Sta. 10+50 to Sta. 22+17

NOTE:  
 UTILIZE TEMPORARY SEDIMENT BASIN OR SPECIAL STILLING  
 BASIN(S) AS STILLING BASIN WHERE APPLICABLE.



Temporary Rock  
 Silt Check Type A  
 2.75 ft. weir height

Temporary Rock  
 Silt Check Type A  
 3 ft. weir height

FOR -L- PROFILE SEE SHEET 5  
 FOR STRUCTURE PLANS SEE SHEETS S-1 THRU S-40

REVISIONS

8/17/99  
 8/16/2022  
 N:\2018\251801945.23 B-5670\Roads.dwg\CAD\B-5670\_ESC\_pah\_5.dgn  
 8/16/2022  
 N:\2018\251801945.23 B-5670\Roads.dwg\CAD\B-5670\_ESC\_pah\_5.dgn