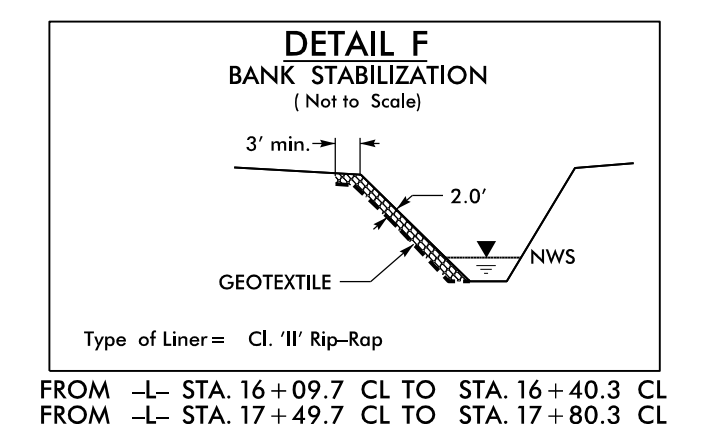
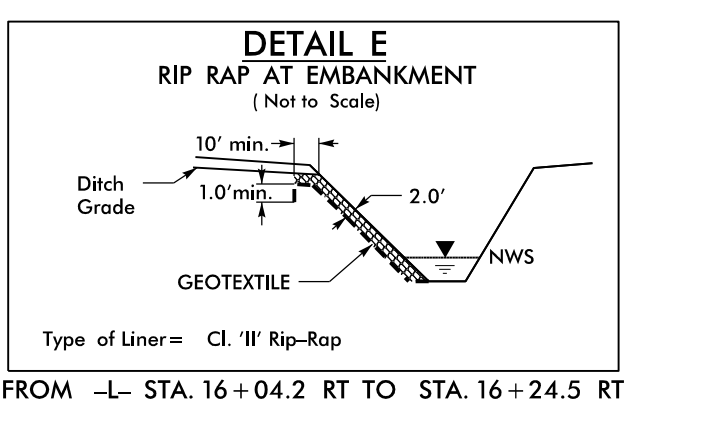
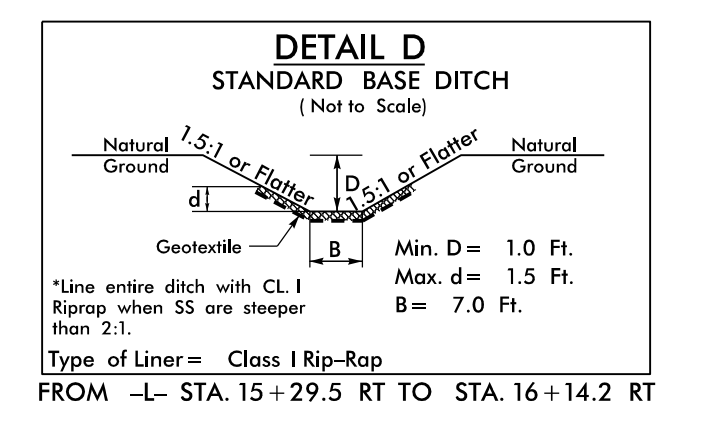
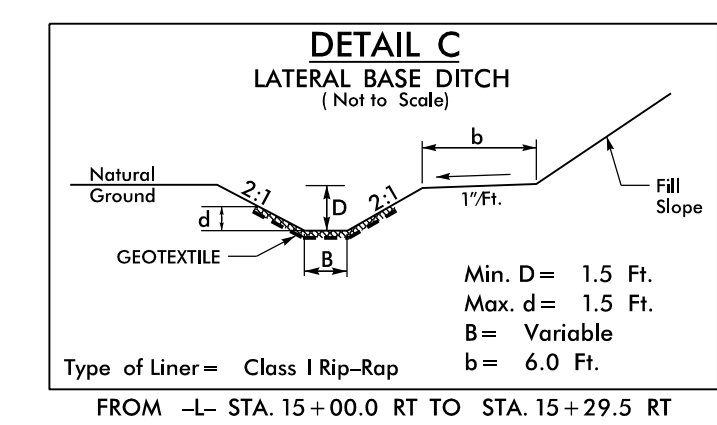
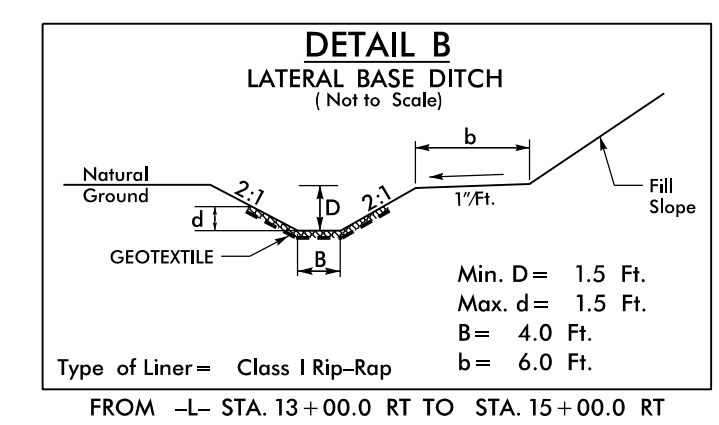
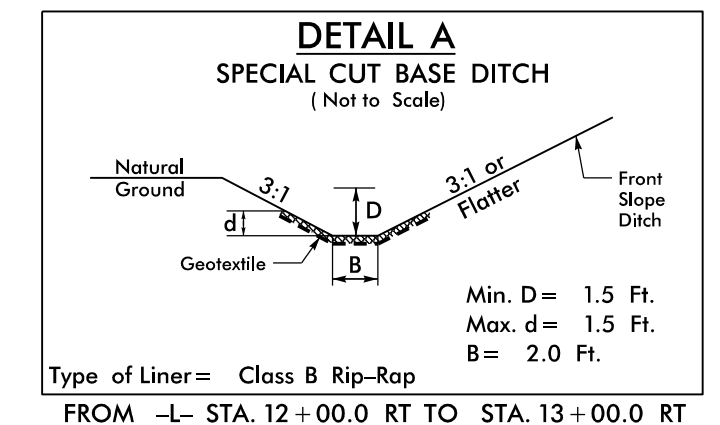
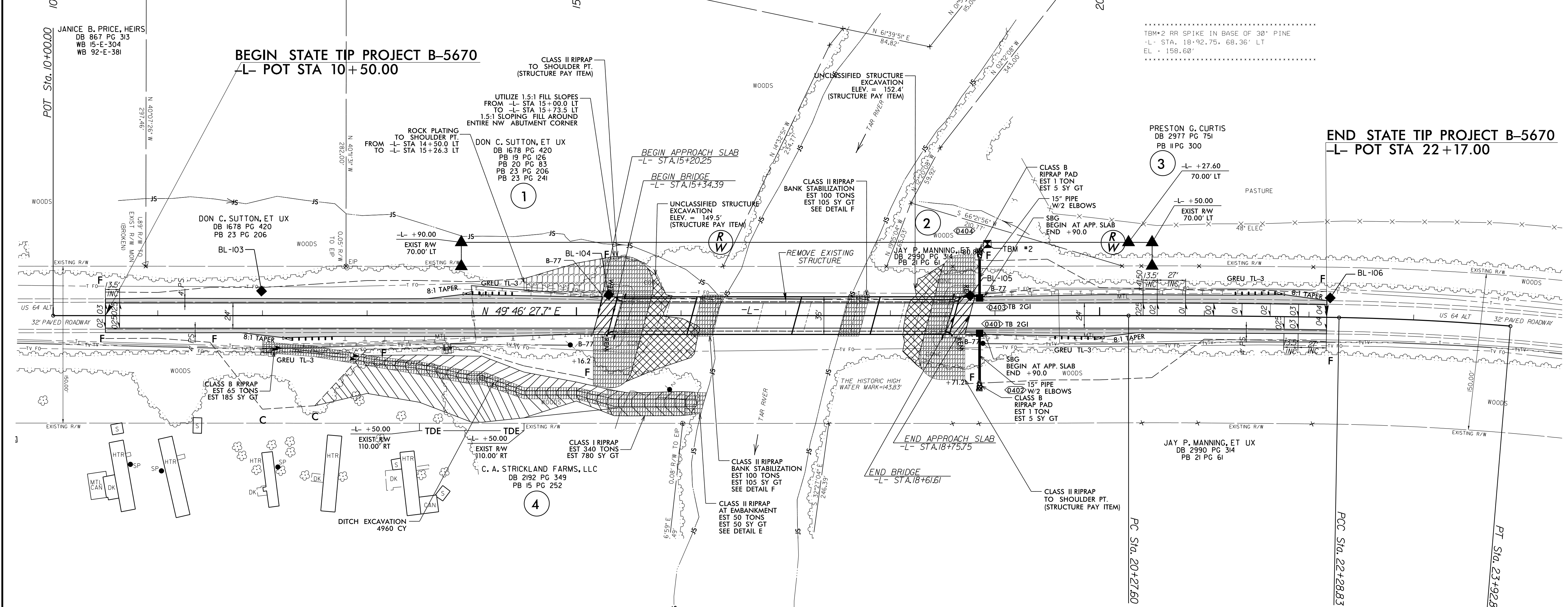
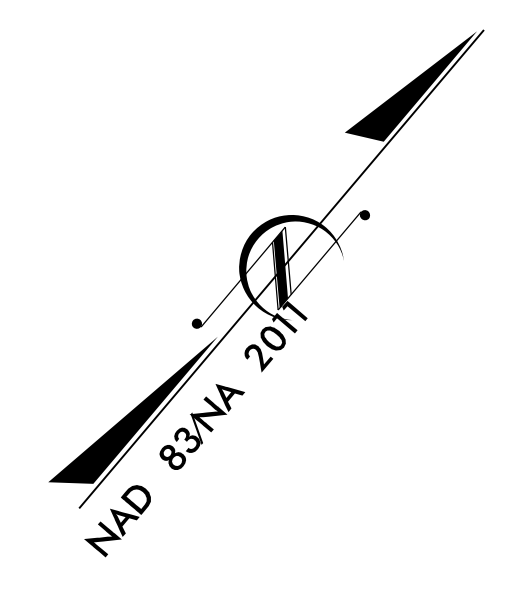


8/17/99

PROJECT REFERENCE NO. <b>B-5670</b>	SHEET NO. <b>4</b>
RW SHEET NO.	
ROADWAY DESIGN ENGINEER <i>[Signature]</i> 036853	HYDRAULICS ENGINEER <i>[Signature]</i> 052488
8/16/2022	8/16/2022
<b>DOCUMENT NOT CONSIDERED FINAL UNLESS ALL SIGNATURES COMPLETED</b>	
KCI Engineers • Planners • Scientists • Construction Managers 4505 Falls of Neuse Road, Suite 400 Raleigh, NC 27609 Phone (919) 783-9214 • Fax (919) 783-9266	

PI Sta 21+28.22    PI Sta 23+10.84  
 $\Delta = 1'02'' 19.3'' (RT)$      $\Delta = 3'40'' 54.6'' (RT)$   
 $D = 0'30'' 58.2''$      $D = 2'14'' 43.6''$   
 $L = 201.23'$      $L = 163.97'$   
 $T = 100.62'$      $T = 82.01'$   
 $R = 11,000.00'$      $R = 2,551.64'$   
 $RO = 67.5'$   
 $e = .04$



TBM #2 RR SPIKE IN BASE OF 30" PINE  
 -L- STA. 18+92.75, 68.36' LT  
 EL = 158.60'

**END STATE TIP PROJECT B-5670**  
 -L- POT STA 22+17.00

REVISIONS

15-AUG-2022 12:41 M:\2018\1801945\_23 B-5670\Roadway\Proj\B-5670\_Rdy\_psh.dgn

FOR -L- PROFILE SEE SHEET 5  
 FOR STRUCTURE PLANS SEE SHEETS S-1 THRU S-40