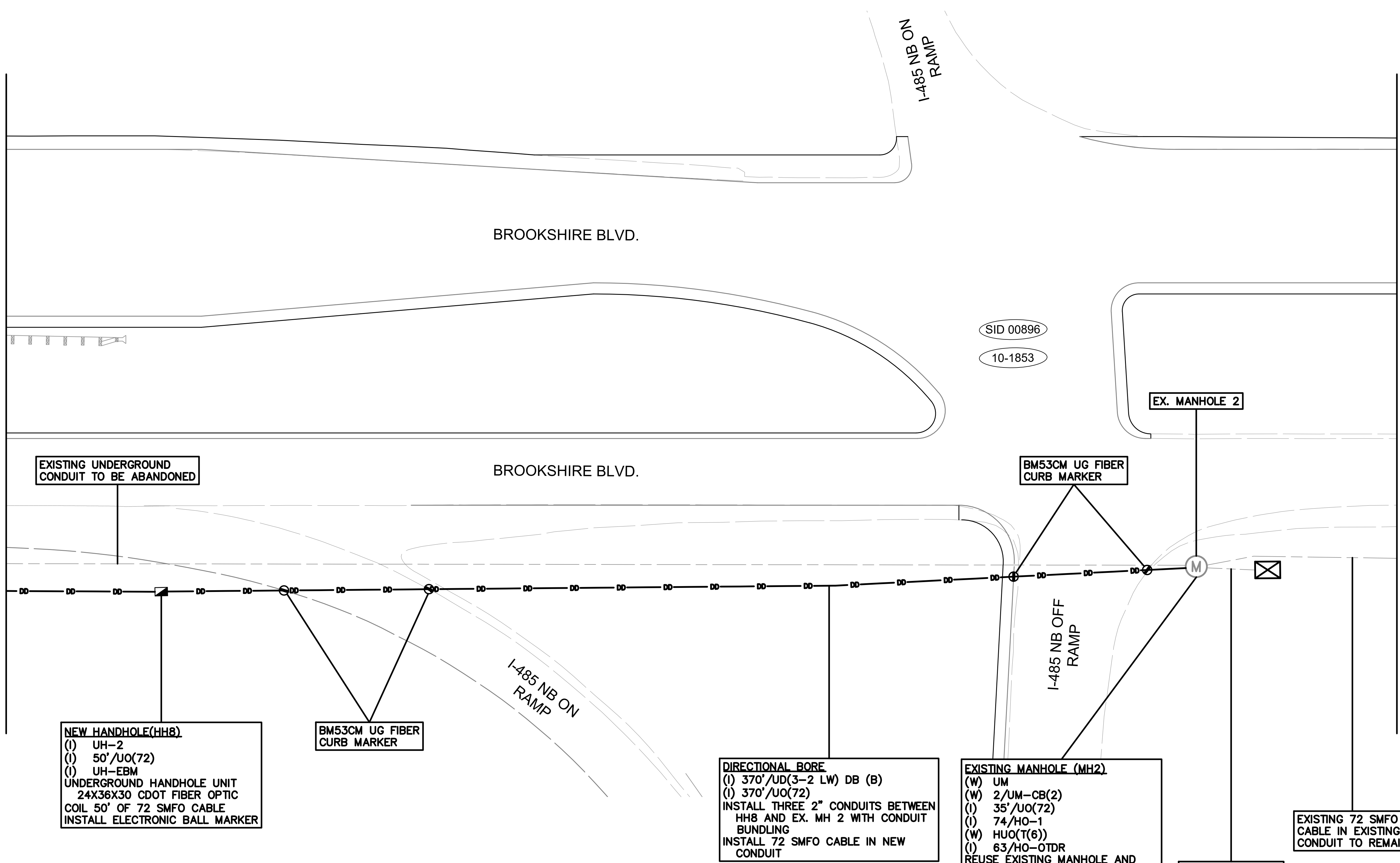


MATCH LINE SEE SHEET CR8

END PROJECT



EXISTING UNDERGROUND CONDUIT TO BE ABANDONED

**NEW HANDHOLE (HH8)**  
 (1) UH-2  
 (1) 50'/UO(72)  
 (1) UH-EBM  
 UNDERGROUND HANDHOLE UNIT  
 24X36X30 CDOT FIBER OPTIC  
 COIL 50' OF 72 SMFO CABLE  
 INSTALL ELECTRONIC BALL MARKER

BM53CM UG FIBER CURB MARKER

**DIRECTIONAL BORE**  
 (1) 370'/UD(3-2 LW) DB (B)  
 (1) 370'/UO(72)  
 INSTALL THREE 2" CONDUITS BETWEEN  
 HH8 AND EX. MH 2 WITH CONDUIT  
 BUNDLING  
 INSTALL 72 SMFO CABLE IN NEW  
 CONDUIT

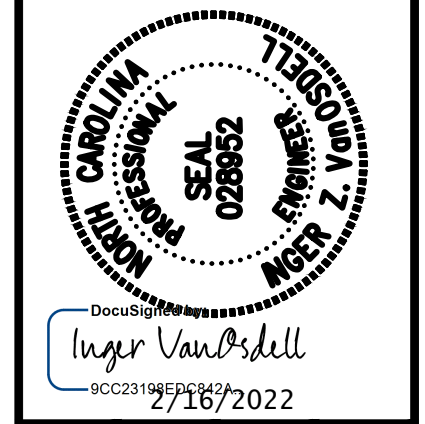
**EXISTING MANHOLE (MH2)**  
 (W) UM  
 (W) 2/UM-CB(2)  
 (1) 35'/UO(72)  
 (1) 74/HO-1  
 (W) HUO(T(6))  
 (1) 63/HO-OTDR  
 REUSE EXISTING MANHOLE AND  
 PLACE NEW CONDUIT AND  
 CABLE IN EXISTING MANHOLE  
 UNIT  
 TWO 2" MANHOLE CONDUIT  
 ENTRANCE UNITS  
 COIL 35' OF PROPOSED 72 SMFO  
 CABLE  
 INSTALL 74 FIBER OPTIC SPLICING  
 ASSEMBLY UNITS  
 REUSE UNDERGROUND SPLICE  
 CLOSURE ARRANGEMENT UNIT (SEE  
 SHEET CR3D FOR SPLICE DETAIL)  
 F/O SPLICE TEST  
 NOTE:  
 ALL SPARE FIBERS ARE TO BE  
 BIDIRECTIONAL TESTED BETWEEN  
 EX. HH1 AND EXISTING MH2

EXISTING 6 FIBER DROP CABLE IN EXISTING CONDUIT TO REMAIN

EXISTING 72 SMFO CABLE IN EXISTING CONDUIT TO REMAIN

- NOTES:**
- CONTRACTOR IS RESPONSIBLE FOR LOCATING ALL UTILITIES PRIOR TO CONSTRUCTION.
  - CONTRACTOR TO CUT EXISTING CONDUITS IN NEW AND EXISTING HANDHOLE FOR 6 INCH STUB UP.
  - ALL UNUSED CONDUITS TO BE CAPPED AND TAPE SEALED. USED CONDUITS TO BE SEALED WITH SEALING COMPOUND (OR DUCT PLUGS).
  - CONDUIT AND FIBER QUANTITIES ARE MEASURED AND LABELED FROM HANDHOLE TO HANDHOLE AND/OR POLE TO POLE AND NOT PER SHEET.
  - CONTRACTOR TO COORDINATE WITH CDOT ENGINEER BEFORE EXISTING FIBER IS CUT TO DETERMINE OUTAGE TIMES.
  - NEW 72 SMFO CABLE IS TO BE INSTALLED OUTSIDE OF CONSTRUCTION ZONE AND SPLICED INTO EXISTING 72 SMFO CABLE AT EX. HH#1(CR3A) AND EX. MH#2(CR3D).
  - EXISTING SMFO CABLE BETWEEN EXISTING HH1 AND EX. MH#2 IS CUT AND REMOVED ONCE NEW CONDUIT AND FIBER HAS BEEN INSTALLED AND APPROVED BY ENGINEER.

NO.	DATE	BY	DESCRIPTION



DOCUMENT NOT CONSIDERED FINAL UNLESS ALL SIGNATURES COMPLETED

SCALE	1"=20'
CAD FILE	
PREPARED BY	MC Burke
CHECKED BY	IZ Vanosdell
DATE	09/2021
APPROVED BY	IZ Vanosdell

BROOKSHIRE BOULEVARD CHARLOTTE, NC	CABLE ROUTING PLANS
SHEET CR9	OF CR9

