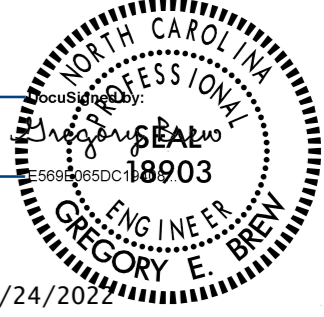

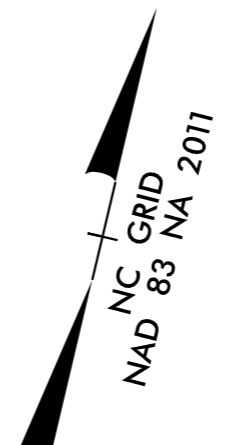
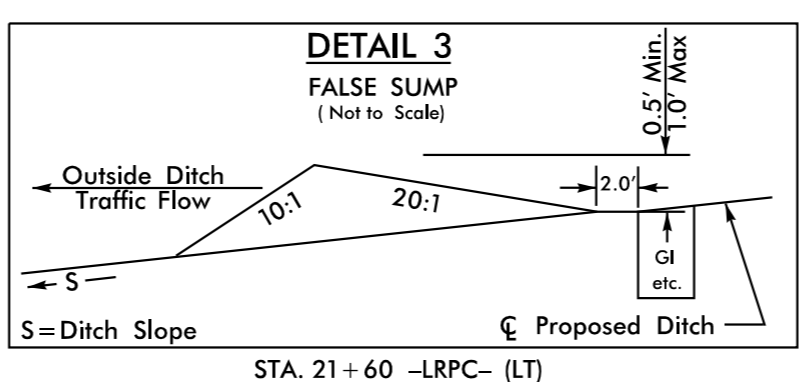
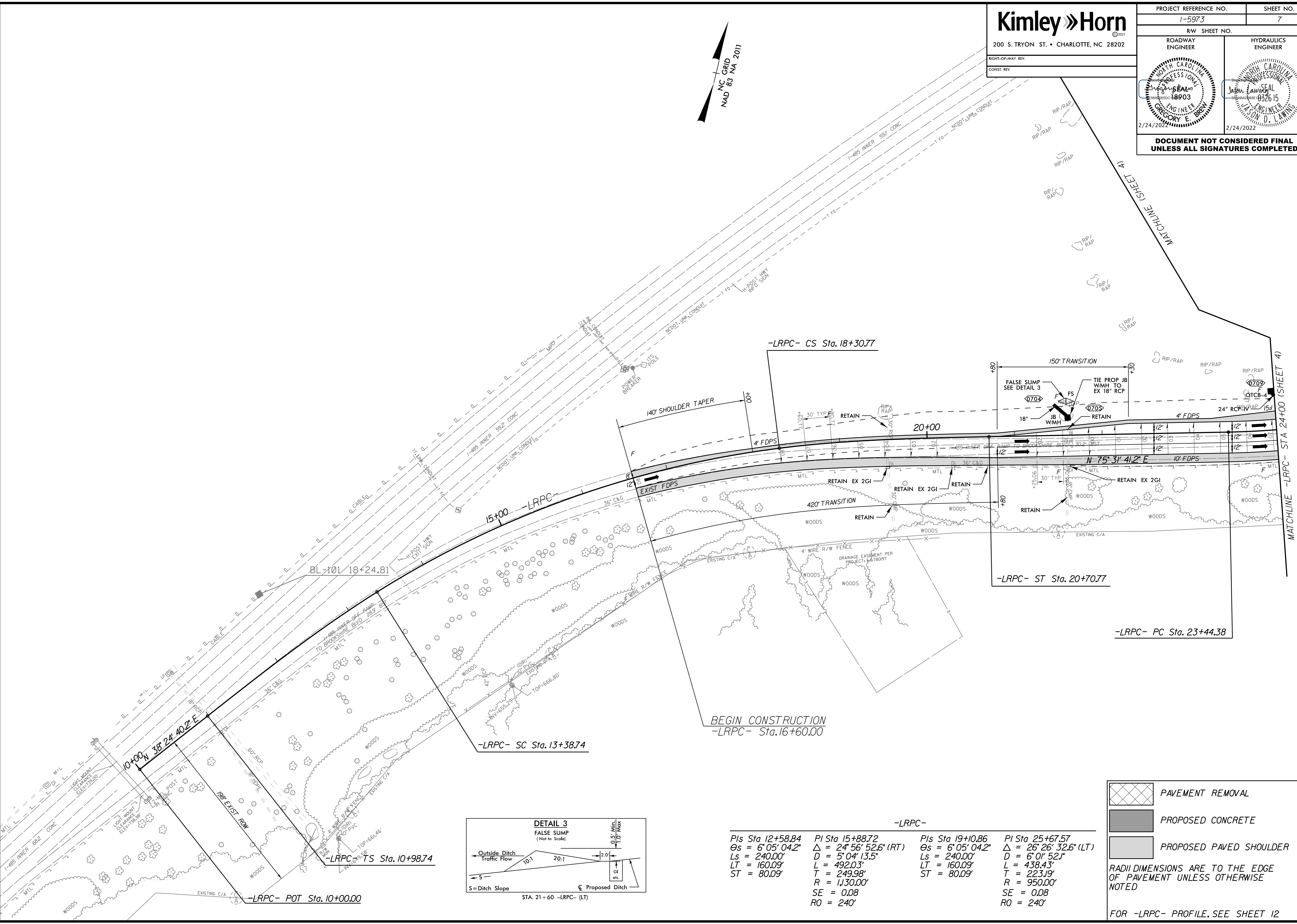


PROJECT REFERENCE NO. 1-5973	SHEET NO. 7
R/W SHEET NO.	HYDRAULICS ENGINEER
ROADWAY ENGINEER	ENGINEER
	
2/24/2022	2/24/2022
DOCUMENT NOT CONSIDERED FINAL UNLESS ALL SIGNATURES COMPLETED	






REVISIONS

K:\CHL_PRA\01036453 - 1-5973 (1-485 Brookshire)\Roadway\ProN-5973_rdy_psh_7.dgn



-LRPC-

PI Sta 12+58.84	PI Sta 15+88.72	PI Sta 19+10.86	PI Sta 25+67.57
$\Theta_s = 6' 05' 04.2''$	$\Delta = 24' 56' 52.6''$ (RT)	$\Theta_s = 6' 05' 04.2''$	$\Delta = 26' 26' 32.6''$ (LT)
Ls = 240.00'	D = 5' 04' 13.5"	Ls = 240.00'	D = 6' 01' 52.1"
LT = 160.09'	L = 492.03'	LT = 160.09'	L = 438.43'
ST = 80.09'	T = 249.98'	ST = 80.09'	T = 223.19'
	R = 1,130.00'		R = 950.00'
	SE = 0.08		SE = 0.08
	RO = 240'		RO = 240'

-  PAVEMENT REMOVAL
 -  PROPOSED CONCRETE
 -  PROPOSED PAVED SHOULDER
- RADI DIMENSIONS ARE TO THE EDGE OF PAVEMENT UNLESS OTHERWISE NOTED
- FOR -LRPC- PROFILE, SEE SHEET 12