

**DOCUMENT NOT CONSIDERED FINAL  
UNLESS ALL SIGNATURES COMPLETED**

**REINFORCING NOTES:**

- EVENLY SPACE HORIZONTAL REBER 8"± 1" UNLESS OTHERWISE NOTED.
  - USE #5 BAR FOR HORIZONTAL STEEL AND #5 BAR FOR THE VERTICAL CAGE.
  - SUBMIT CHANGES IN STEEL PLACEMENT OR SIZE TO THE ENGINEER.
  - ALL SPLICE LENGTHS SHALL BE 2'-9" MINIMUM.
- \* REFER TO PLAN TYPICAL SECTIONS AND PAVEMENT SCHEDULE TO DETERMINE KEY-IN DEPTH. DIMENSIONS SHOWN ARE BASED ON A MIN. KEY-IN DEPTH.

**NOTES:**

REFER TO PLAN SHEET AND/OR TYPICAL SECTIONS FOR PROPER BARRIER ORIENTATION.  
 SEE NCDOT ROADWAY STANDARD DRAWING 854.02 SHEET 2 OF 4 FOR INSET "A", INSET "B", LOCATION OF SECTION X-X, AND ADDITIONAL DETAILS.

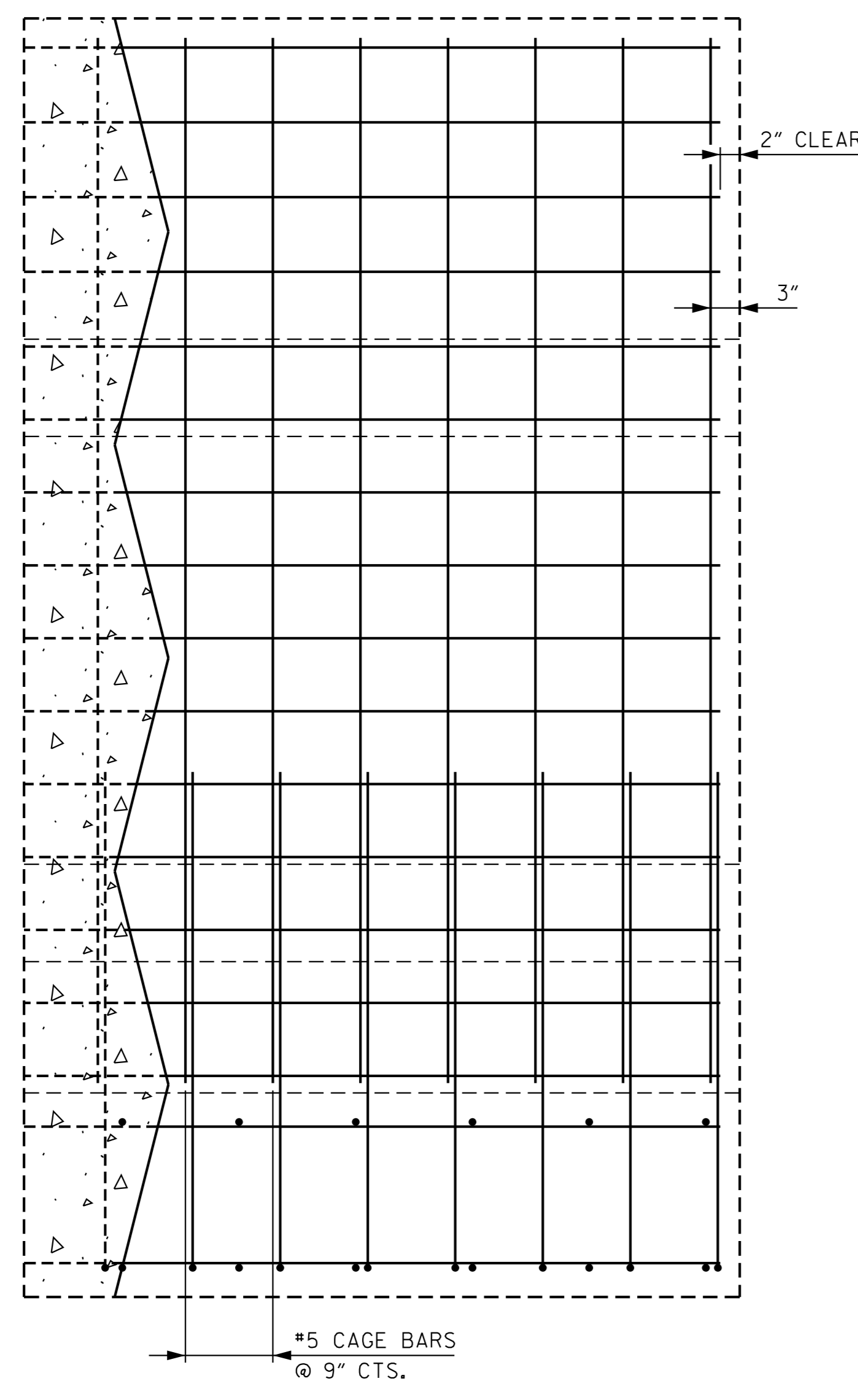
**GENERAL NOTES:**

CONSTRUCT CONCRETE BARRIER OF CLASS 'AA' CONCRETE. (SEE SECTION 854 OF SPECIFICATIONS). CONSTRUCT EXPANSION AND CONTRACTION JOINTS AS SHOWN ON NCDOT ROADWAY STANDARD DRAWING 854.02 SHEET 2 OF 4.  
 SEAL ALL EXPANSION JOINTS WITH JOINT FILLER. (SEE SECTION 1028 OF THE SPECIFICATIONS). SUBMIT ALTERNATIVE METHODS FOR STEEL FABRICATION TO THE ENGINEER.  
 THIS SHEET IS NOT INTENDED TO REPLACE, IN ENTIRETY OR IN PART, NCDOT ROADWAY STANDARD DRAWINGS 854.02 SHEETS 1-4; BUT RATHER TO SUPPLEMENT IT FOR THE APPLICABLE STATION RANGES AS NOTED BELOW.

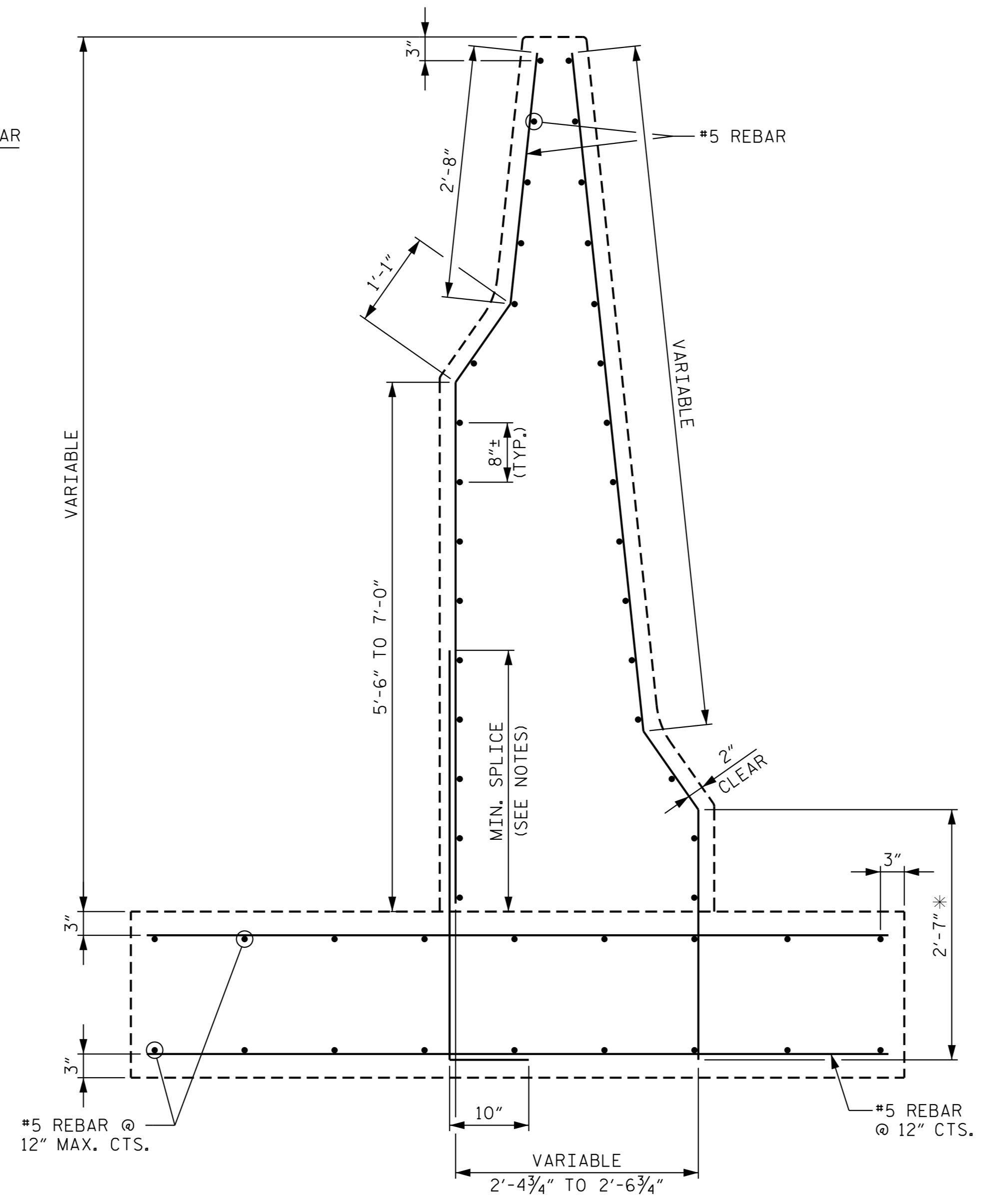
**STEEL PLACEMENT FOR CAST-IN-PLACE OR SLIP-FORM CONCRETE BARRIER**

REVISIONS

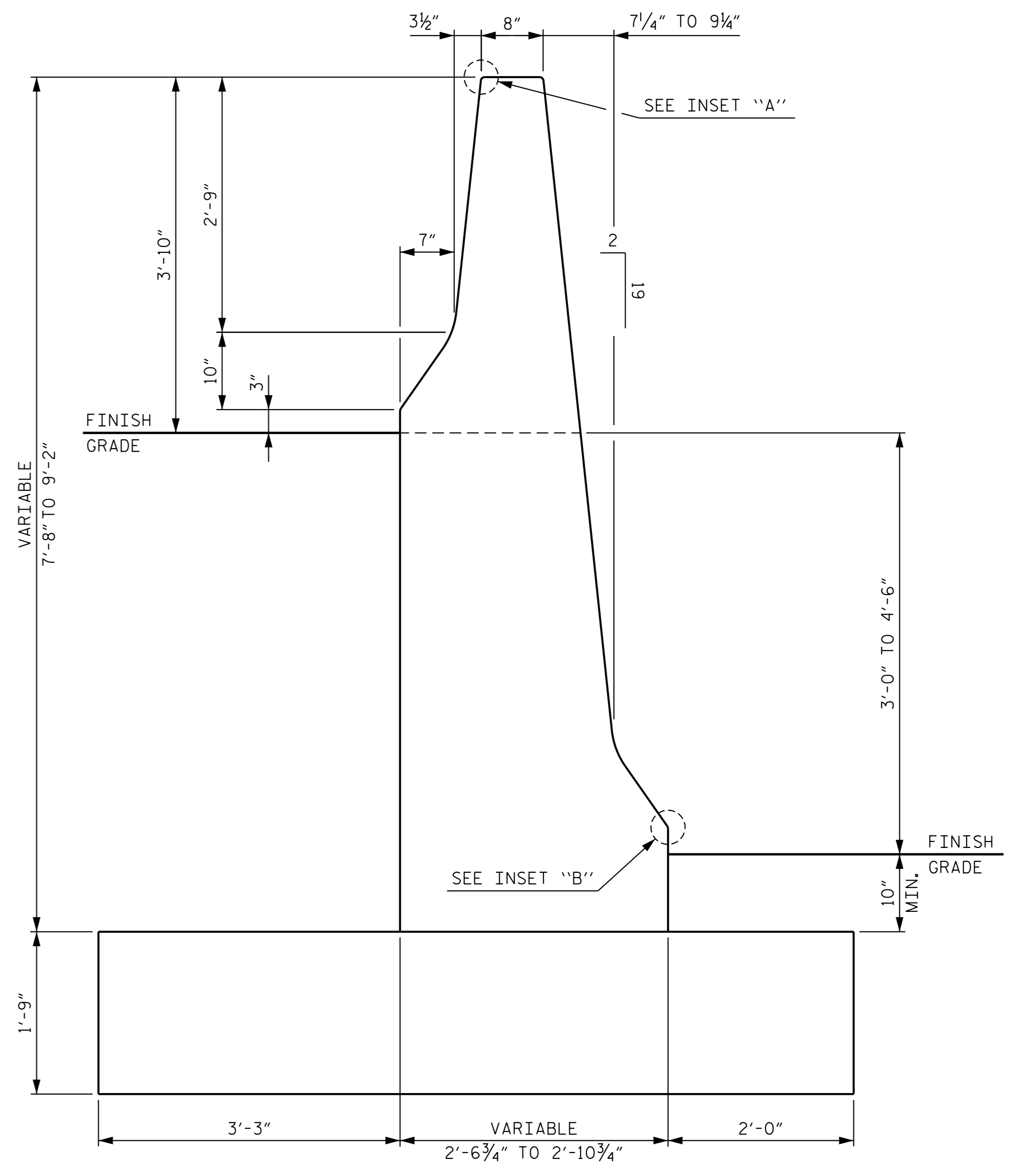
K:\CHL\_P\PR\01036453 - 1-5973 (1-485 Brookshire)\Structures\CAD\CONV-5973\_rdy\_W-1.dgn  
 2/22/2022



**ELEVATION VIEW**



**SECTION VIEW  
TYPE-T2 MOD.**



**SECTION X-X  
TYPE-T2 MOD.**

**MODIFIED CONCRETE BARRIER WALL DETAIL**  
 TO BE UTILIZED BETWEEN STA. 23+35 -LRPA- TO STA. 24+00 -LRPA- (BETWEEN -LRPA- AND -LLPA-)