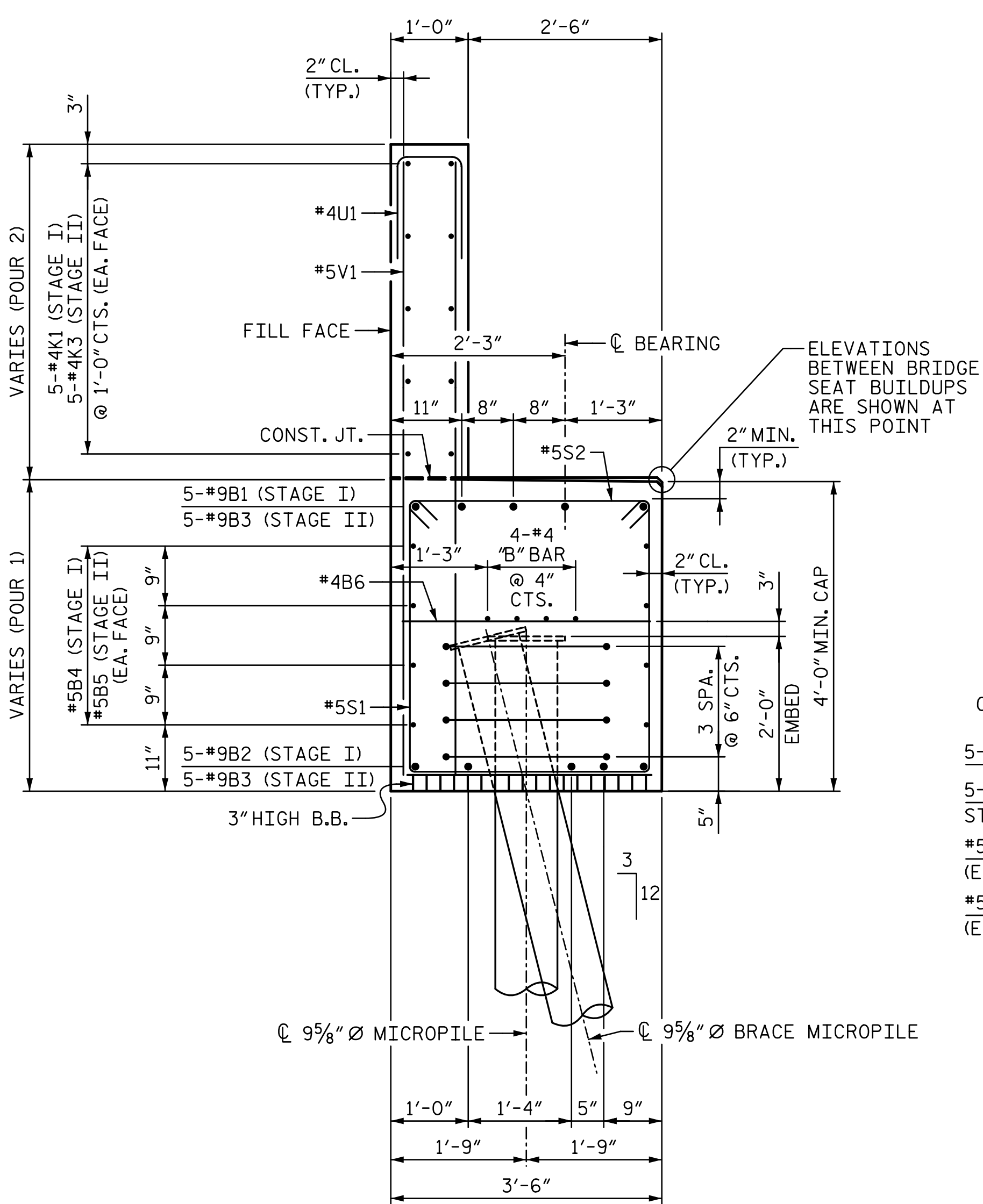


BAGGED STONE AND PIPE SHALL BE PLACED IMMEDIATELY AFTER COMPLETION OF END BENT EXCAVATION. PIPE MAY BE EITHER CONCRETE, CORRUGATED STEEL, CORRUGATED ALUMINUM ALLOY, OR CORRUGATED PLASTIC. PERFORATED PIPE WILL NOT BE ALLOWED.

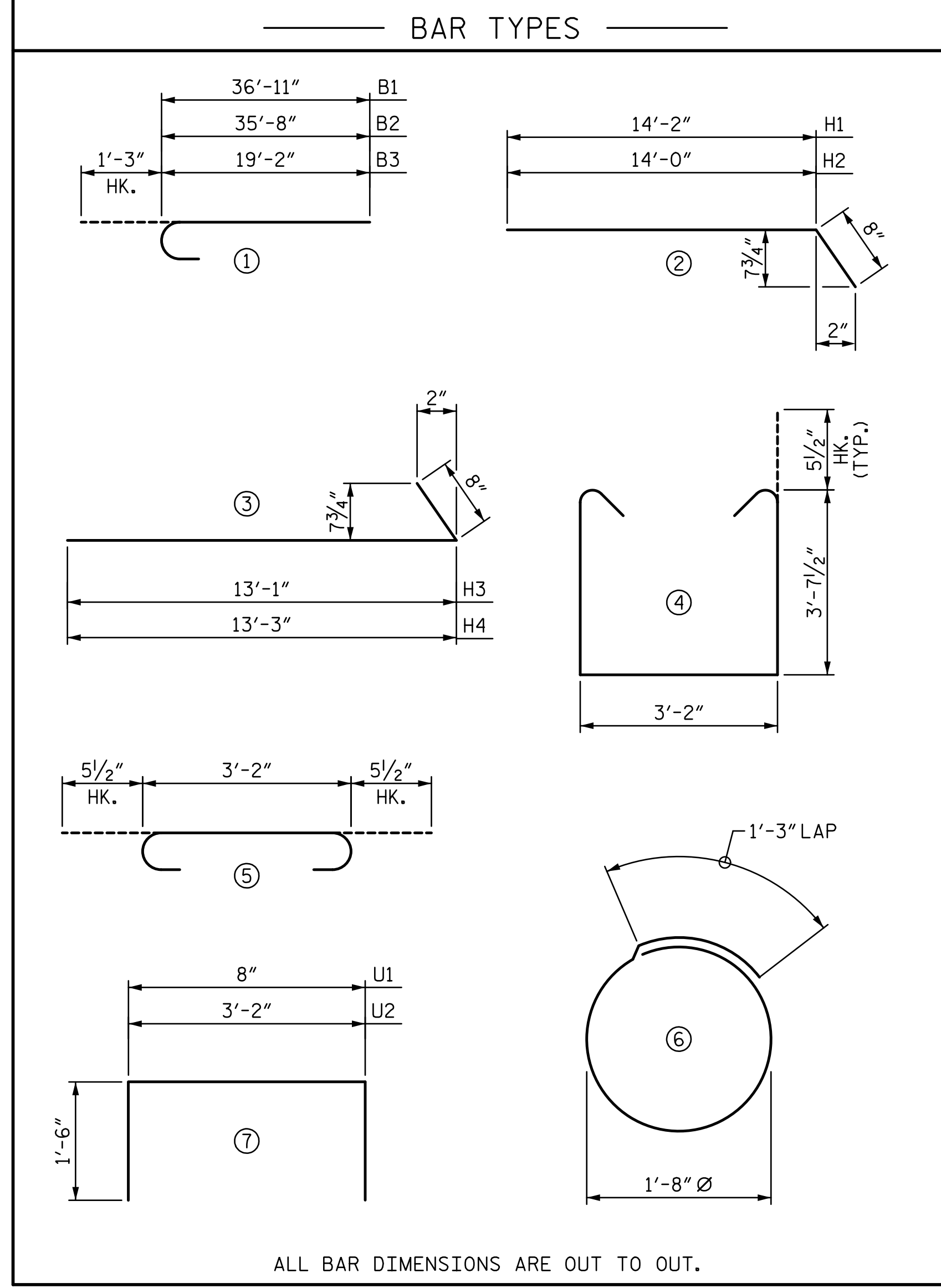
BAGGED STONE SHALL REMAIN IN PLACE UNTIL THE ENGINEER DIRECTS THAT IT BE REMOVED. THE CONTRACTOR SHALL REMOVE AND DISPOSE OF SILT ACCUMULATIONS AT BAGGED STONE WHEN SO DIRECTED BY THE ENGINEER. BAGS SHALL BE REMOVED AND REPLACED WHENEVER THE ENGINEER DETERMINES THAT THEY HAVE DETERIORATED AND LOST THEIR EFFECTIVENESS.

NO SEPERATE PAYMENT WILL BE MADE FOR THIS WORK AND THE ENTIRE COST OF THIS WORK SHALL BE INCLUDED IN THE UNIT CONTRACT PRICE BID FOR THE SEVERAL PAY ITEMS.

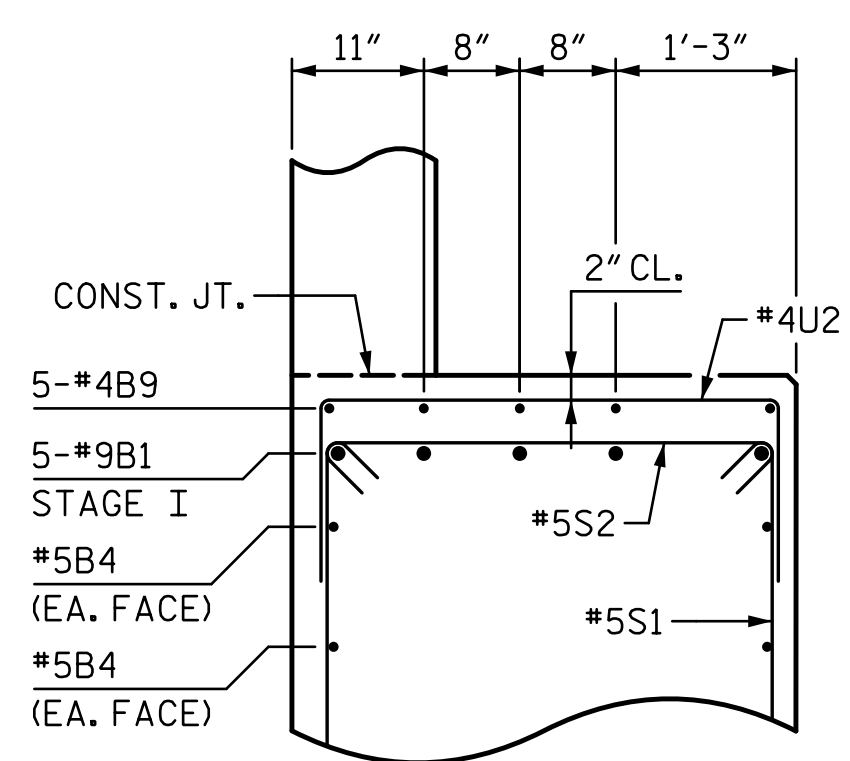
TEMPORARY DRAINAGE AT END BENT



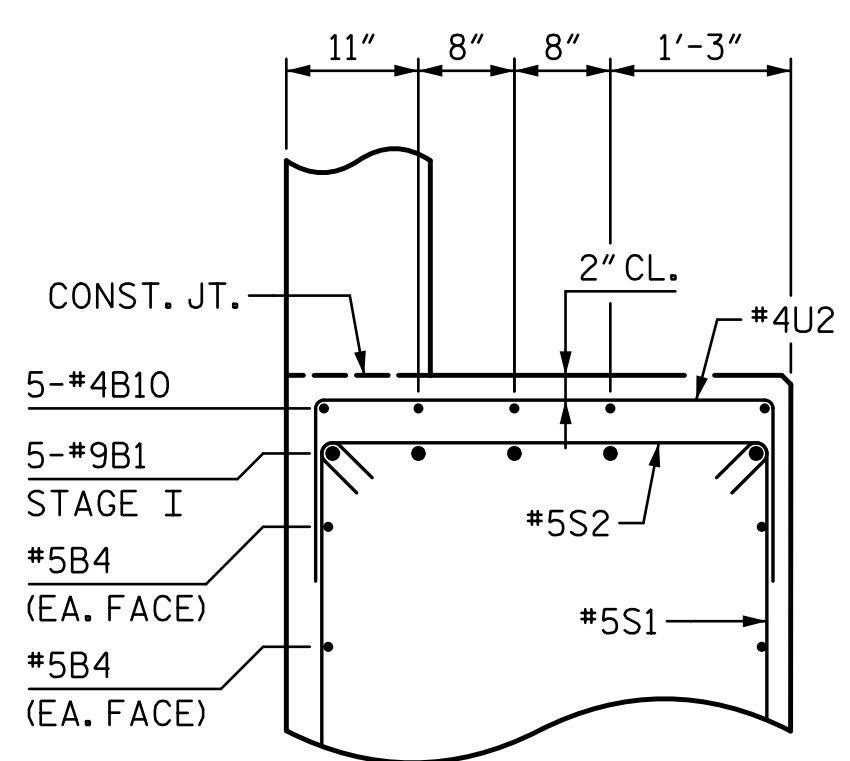
SECTION A-A



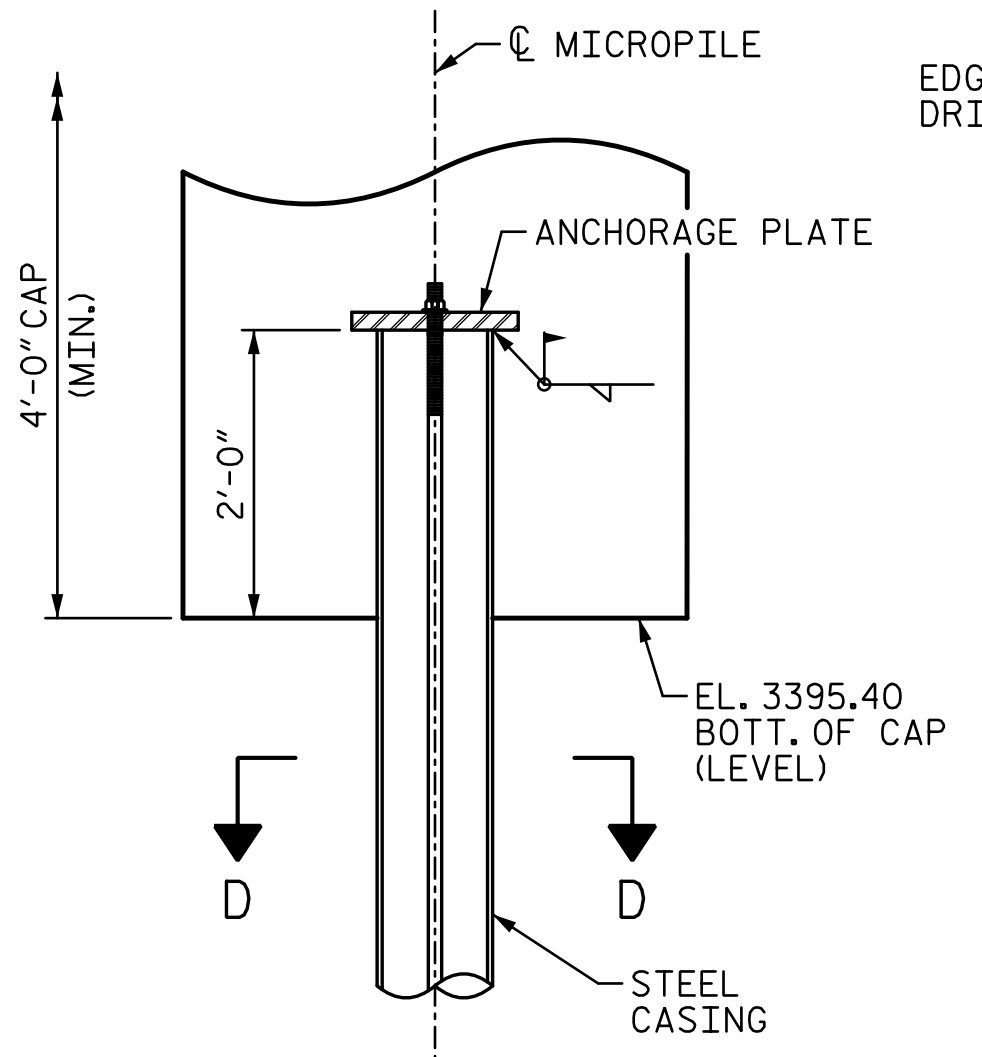
ALL BAR DIMENSIONS ARE OUT TO OUT.



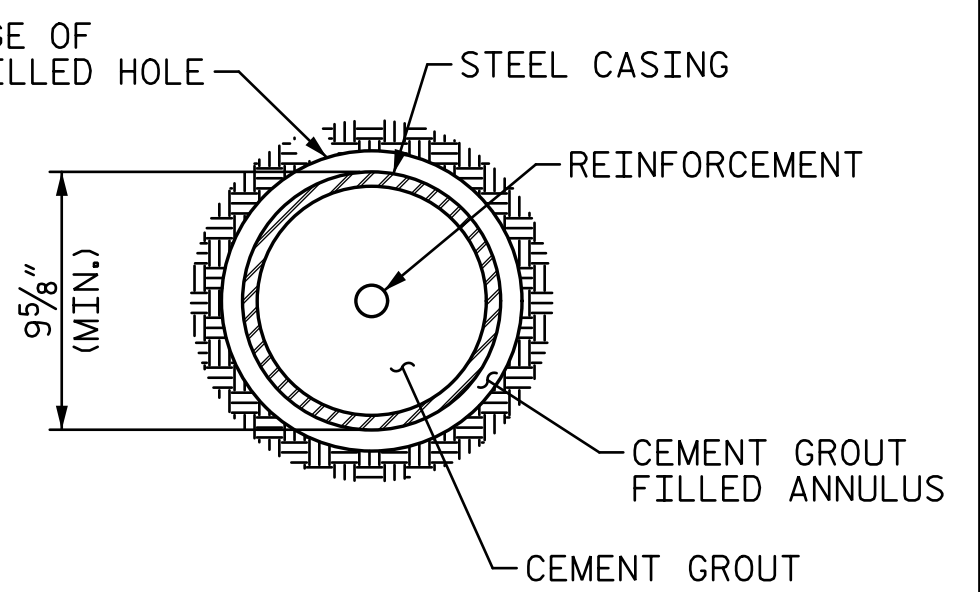
PARTIAL SECTION B-B



PARTIAL SECTION C-C



MICROPILE DETAIL
(TYP. EACH MICROPILE)



SECTION D-D

BILL OF REINFORCING

END BENT 1 - STAGE I						END BENT 1 - STAGE II					
BAR	NO.	SIZE	TYPE	LENGTH	WEIGHT	BAR	NO.	SIZE	TYPE	LENGTH	WEIGHT
B1	5	#9	(1)	38'-2"	649	B3	10	#9	(1)	20'-5"	694
B2	5	#9	(1)	36'-11"	628	B5	8	#5	STR.	19'-2"	160
B4	8	#5	STR.	34'-7"	289	B6	5	#4	STR.	3'-2"	11
B6	8	#4	STR.	3'-2"	17	B8	4	#4	STR.	19'-2"	51
B7	4	#4	STR.	34'-7"	92						
B9	5	#4	STR.	22'-10"	76	H3	19	#6	(3)	13'-9"	392
B10	5	#4	STR.	3'-5"	11	H4	19	#6	(3)	13'-11"	397
H1	20	#6	(2)	14'-10"	446	K2	6	#4	STR.	2'-8"	11
H2	20	#6	(2)	14'-8"	441	K3	10	#4	STR.	19'-2"	128
K1	10	#4	STR.	34'-7"	231	S1	27	#5	(4)	11'-4"	319
K2	6	#4	STR.	2'-8"	11	S2	27	#5	(5)	4'-1"	115
						S3	8	#4	(6)	6'-6"	34
S1	42	#5	(4)	11'-4"	496						
S2	42	#5	(5)	4'-1"	179	U1	17	#4	(7)	3'-8"	42
S3	16	#4	(6)	6'-6"	70						
U1	29	#4	(7)	3'-8"	71	V1	34	#5	STR.	8'-0"	284
U2	23	#4	(7)	6'-2"	95	V4	20	#5	STR.	9'-6"	198
						V5	14	#5	STR.	9'-3"	135
V1	58	#5	STR.	8'-0"	484						
V2	22	#5	STR.	9'-11"	228						
V3	14	#5	STR.	9'-8"	141						

QUANTITIES

		STAGE I	STAGE II
REINFORCING STEEL	LBS	4,655	2,971
CLASS A CONCRETE:			
POUR 1 - CAP	C.Y.	19.9	12.4
POUR 2 - BACKWALL, WINGS	C.Y.	8.4	6.1
TOTAL CLASS A CONCRETE:	C.Y.	28.3	18.5

PROJECT NO. BR-0029
 MACON COUNTY
 STATION: 15+52.07 -L-

SHEET 4 OF 4

STATE OF NORTH CAROLINA
 DEPARTMENT OF TRANSPORTATION
 RALEIGH
 SUBSTRUCTURE
 END BENT 1
 DETAILS

DRAWN BY : L. YARBROUGH DATE : 09-2021
 CHECKED BY : V. WU DATE : 09-2021
 DESIGN ENGINEER OF RECORD: VINCENT M. WU DATE : 10-2021

**DOCUMENT NOT CONSIDERED FINAL
 UNLESS ALL SIGNATURES COMPLETED**

DRMP
 4235 SOUTH STREAM BLVD.
 SUITE 150,
 CHARLOTTE, NC 28217
 (704) 332-2289
 NC LICENSE NO. C-2213
 2/14/2022

REVISIONS						SHEET NO.
NO.	BY:	DATE:	NO.	BY:	DATE:	S-26
1			3			TOTAL SHEETS
2			4			33