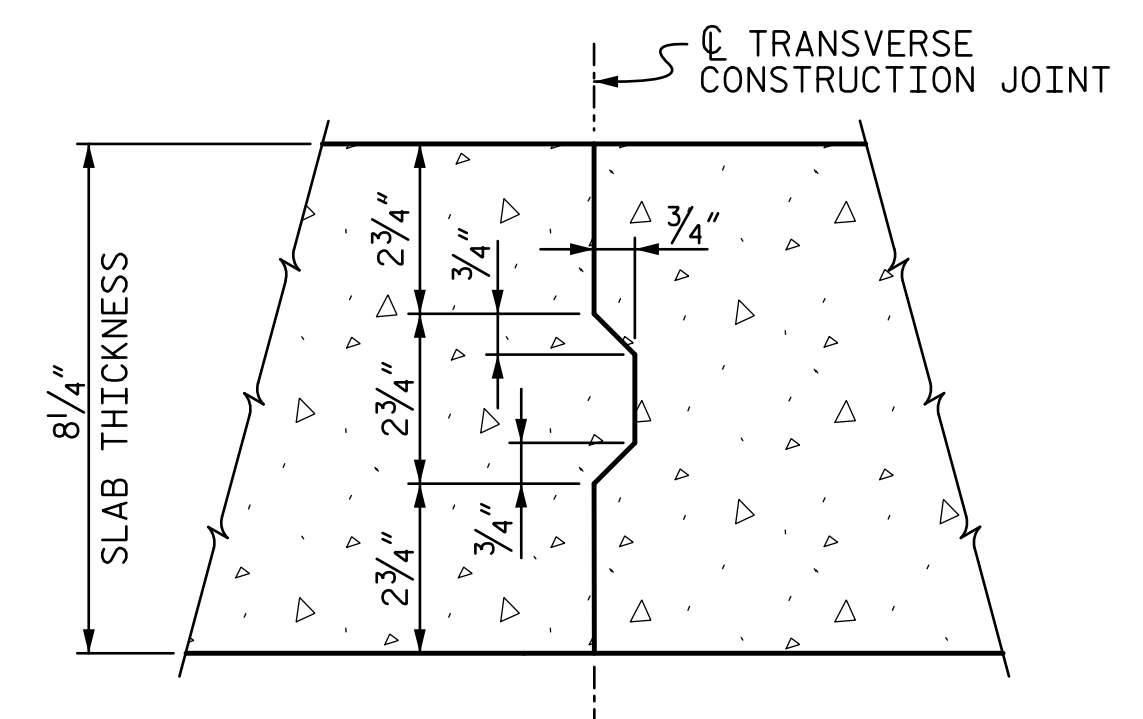
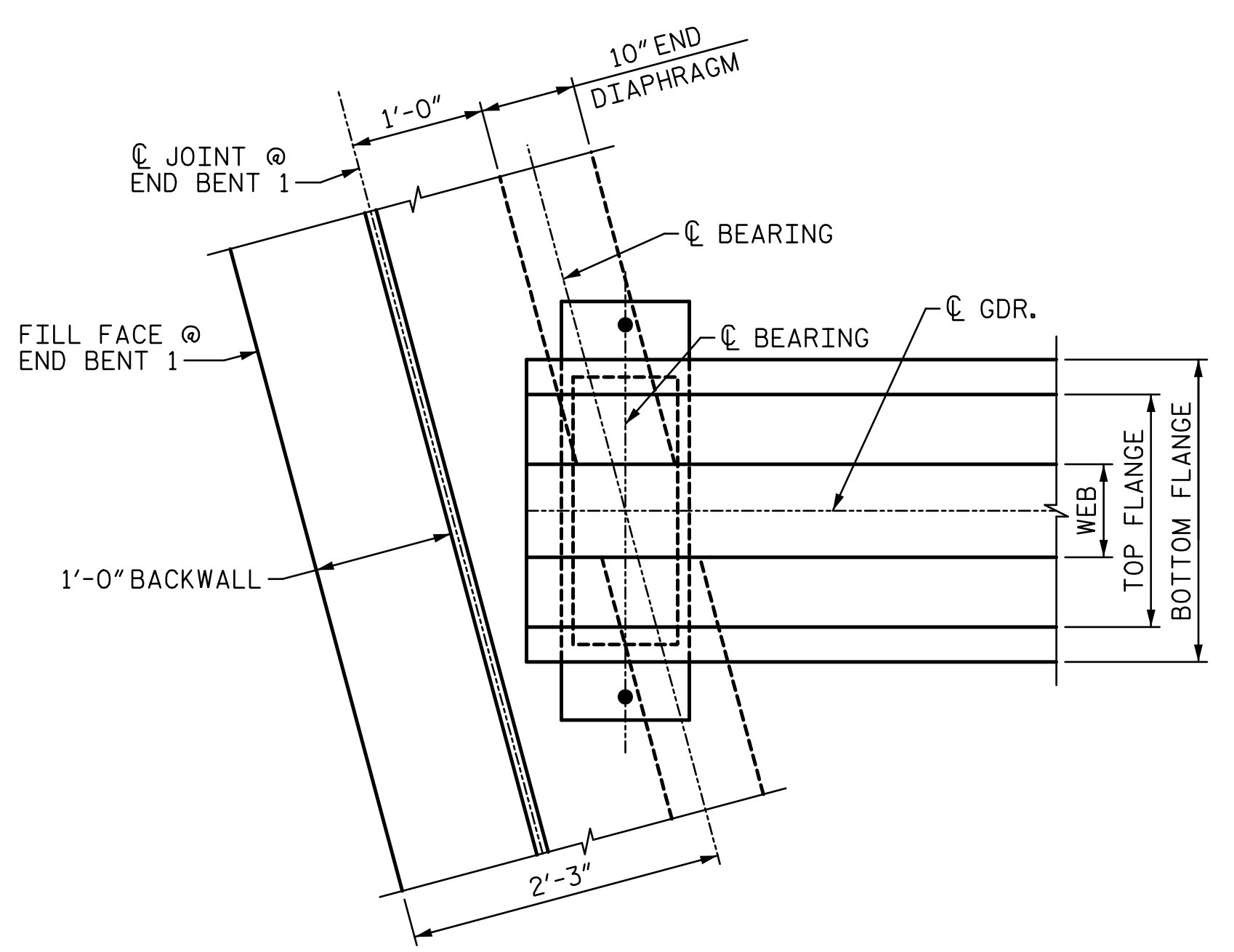


**SECTION A-A**  
END DIAPHRAGM AT END BENT 1 SHOWN, END BENT 2 MIRRORED



NOTE: REINFORCING STEEL IN SLAB NOT SHOWN. LONGITUDINAL REINFORCING STEEL SHALL BE CONTINUOUS THROUGH JOINT.

**TRANSVERSE CONSTRUCTION JOINT  
IN DECK SLAB**



**PLAN AT END DIAPHRAGM**  
(END BENT CAP NOT SHOWN FOR CLARITY)

PROJECT NO. BR-0029  
MACON COUNTY  
STATION: 15+52.07 -L-  
SHEET 3 OF 3

STATE OF NORTH CAROLINA  
DEPARTMENT OF TRANSPORTATION  
RALEIGH  
SUPERSTRUCTURE  
TYPICAL SECTION  
DETAILS

DRAWN BY : D. LOFLIN DATE : 08-2021  
CHECKED BY : V. WU DATE : 09-2021  
DESIGN ENGINEER OF RECORD: VINCENT M. WU DATE : 10-2021

**DOCUMENT NOT CONSIDERED FINAL  
UNLESS ALL SIGNATURES COMPLETED**

**DRMP**  
4235 SOUTH STREAM BLVD.  
SUITE 150,  
CHARLOTTE, NC 28217  
(704) 332-2289  
NC LICENSE NO. C-2213 2/14/2022



REVISIONS						SHEET NO.
NO.	BY:	DATE:	NO.	BY:	DATE:	S-10
1			3			TOTAL SHEETS
2			4			33