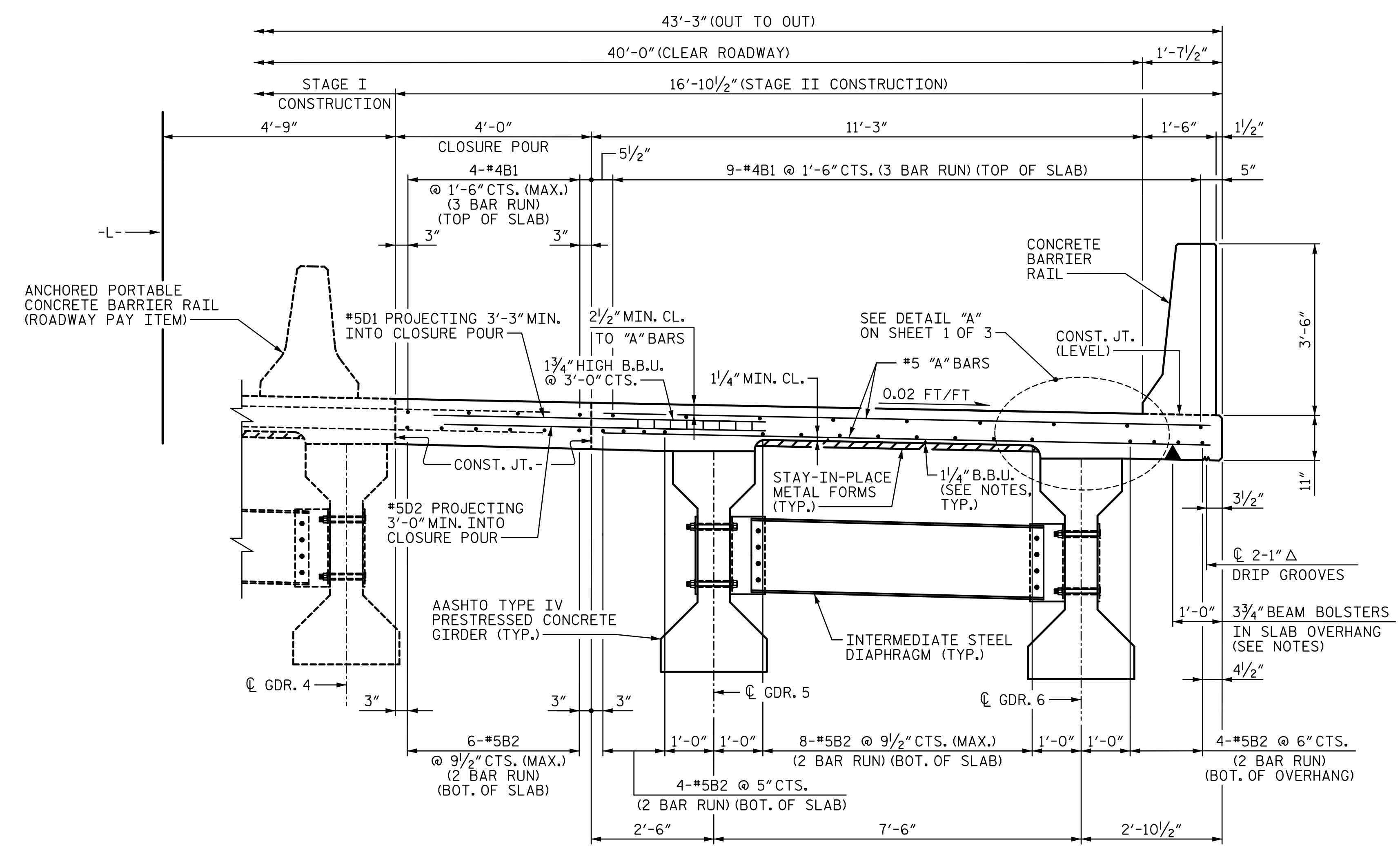
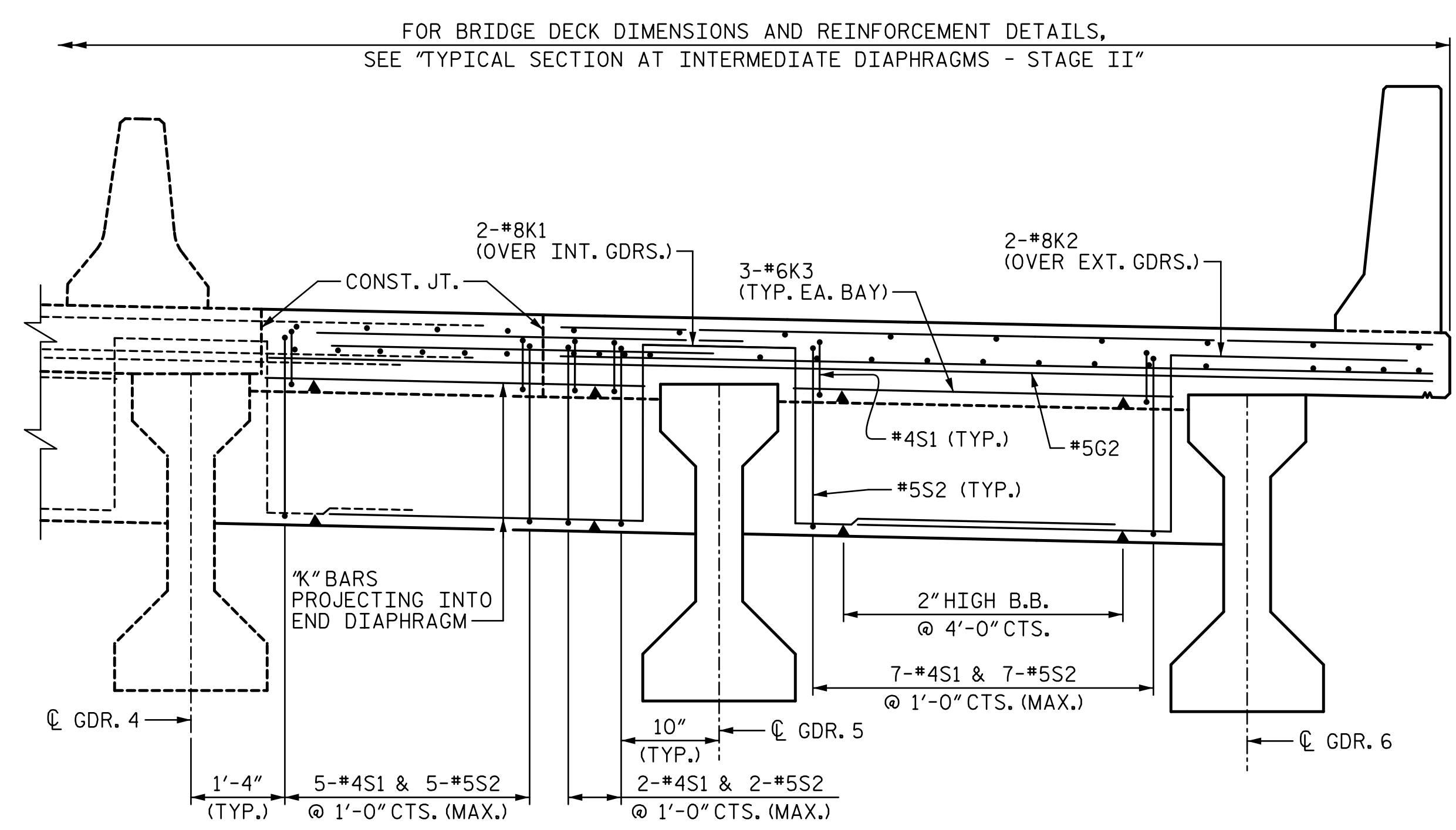


NOTES:  
FOR NOTES, SEE SHEET 1 OF 3.



TYPICAL SECTION AT INTERMEDIATE DIAPHRAGMS - STAGE II



TYPICAL SECTION AT END DIAPHRAGMS - STAGE II

PROJECT NO. BR-0029  
 MACON COUNTY  
 STATION: 15+52.07 -L-  
 SHEET 2 OF 3

STATE OF NORTH CAROLINA  
 DEPARTMENT OF TRANSPORTATION  
 RALEIGH  
 SUPERSTRUCTURE  
 TYPICAL SECTION  
 STAGE II

**DRMP**  
 4235 SOUTH STREAM BLVD.  
 SUITE 150,  
 CHARLOTTE, NC 28217  
 (704) 332-2289  
 NC LICENSE NO. C-2213  
 2/14/2022

DRAWN BY : D. LOFLIN DATE : 08-2021  
 CHECKED BY : V. WU DATE : 09-2021  
 DESIGN ENGINEER OF RECORD: VINCENT M. WU DATE : 10-2021

**DOCUMENT NOT CONSIDERED FINAL  
 UNLESS ALL SIGNATURES COMPLETED**

REVISIONS						SHEET NO.
NO.	BY:	DATE:	NO.	BY:	DATE:	S-09
1			3			TOTAL SHEETS
2			4			33