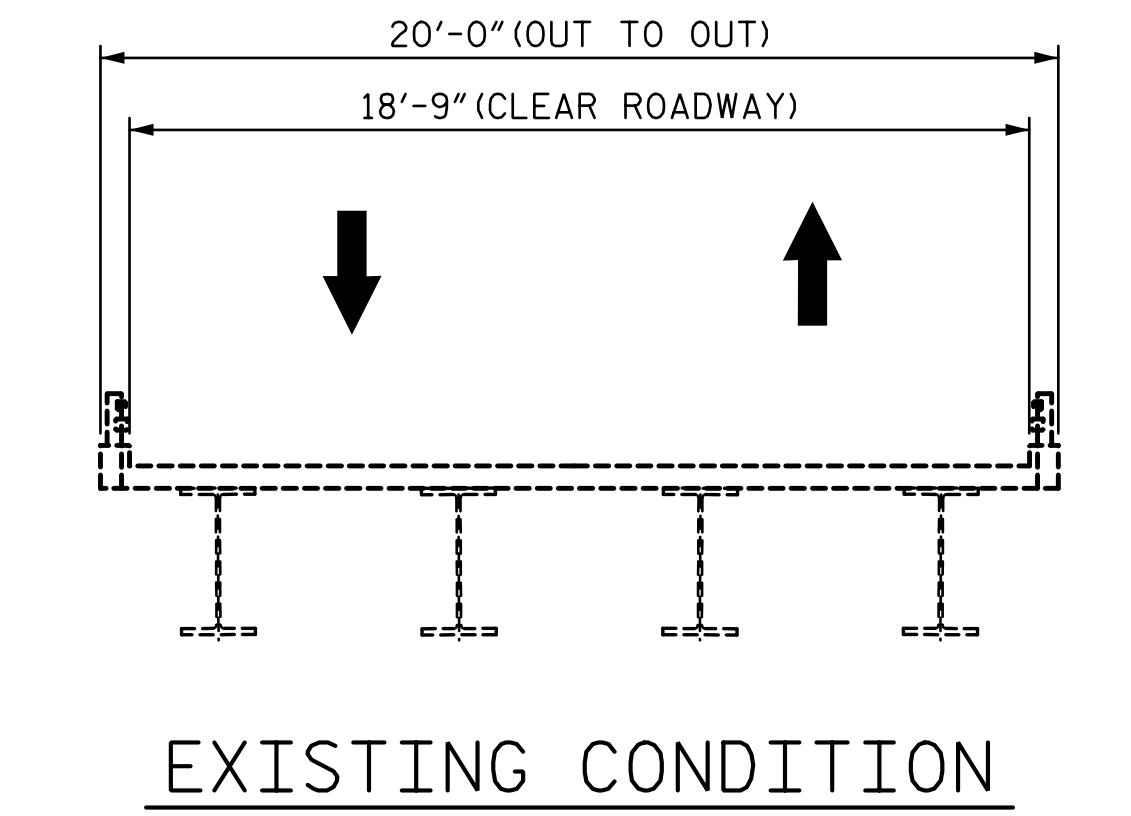
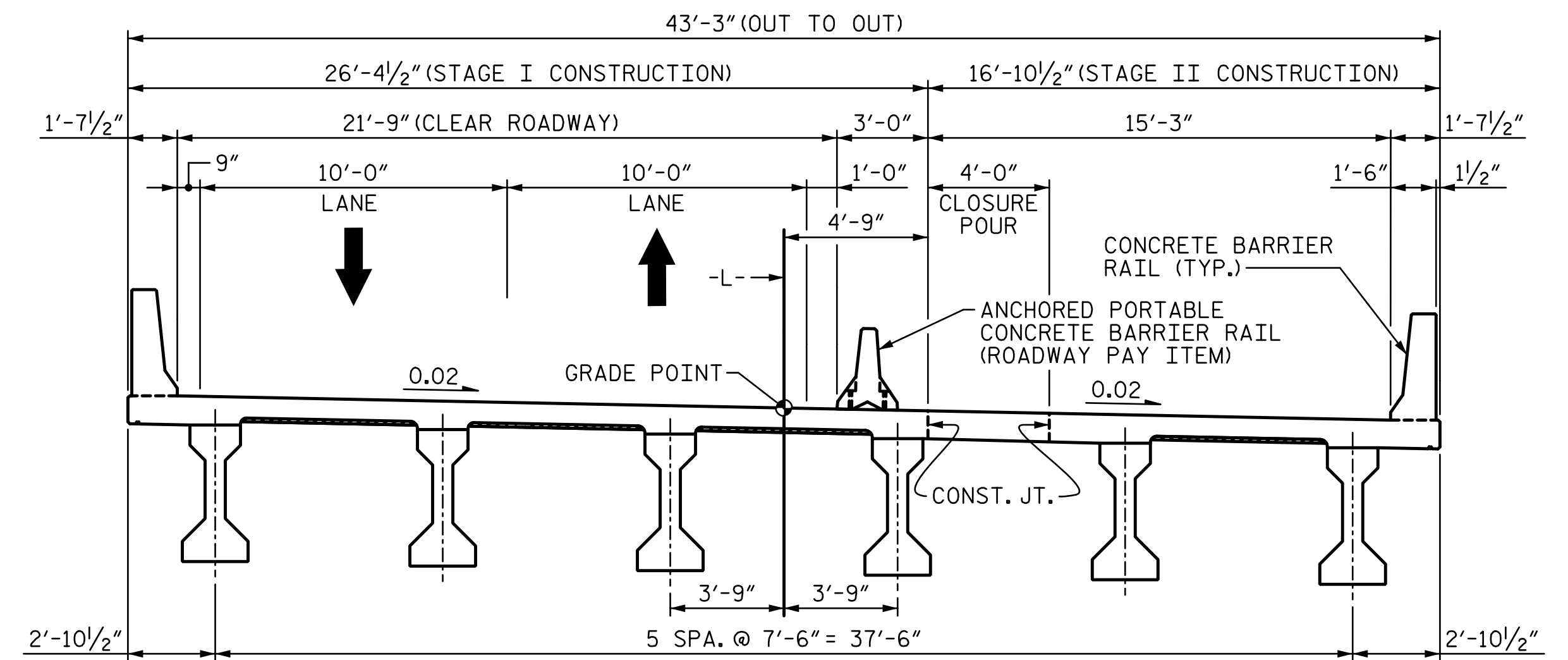


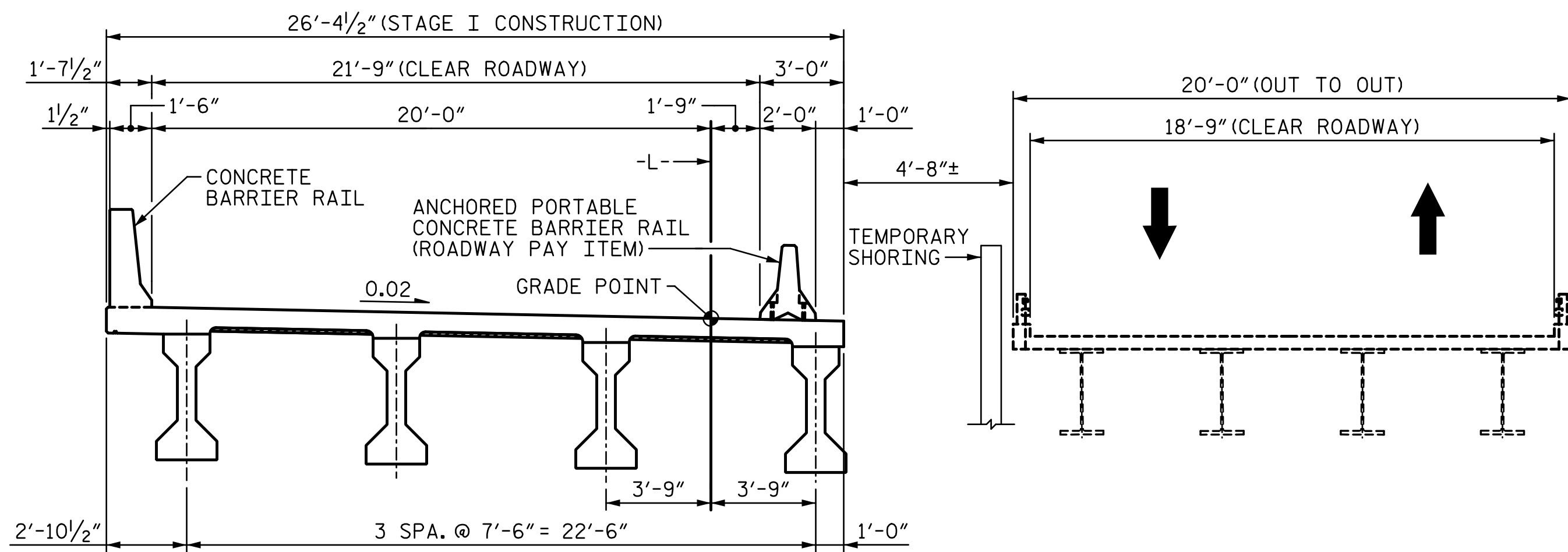
NOTES:
FOR NOTES, SEE SHEET 2 OF 2.



EXISTING CONDITION

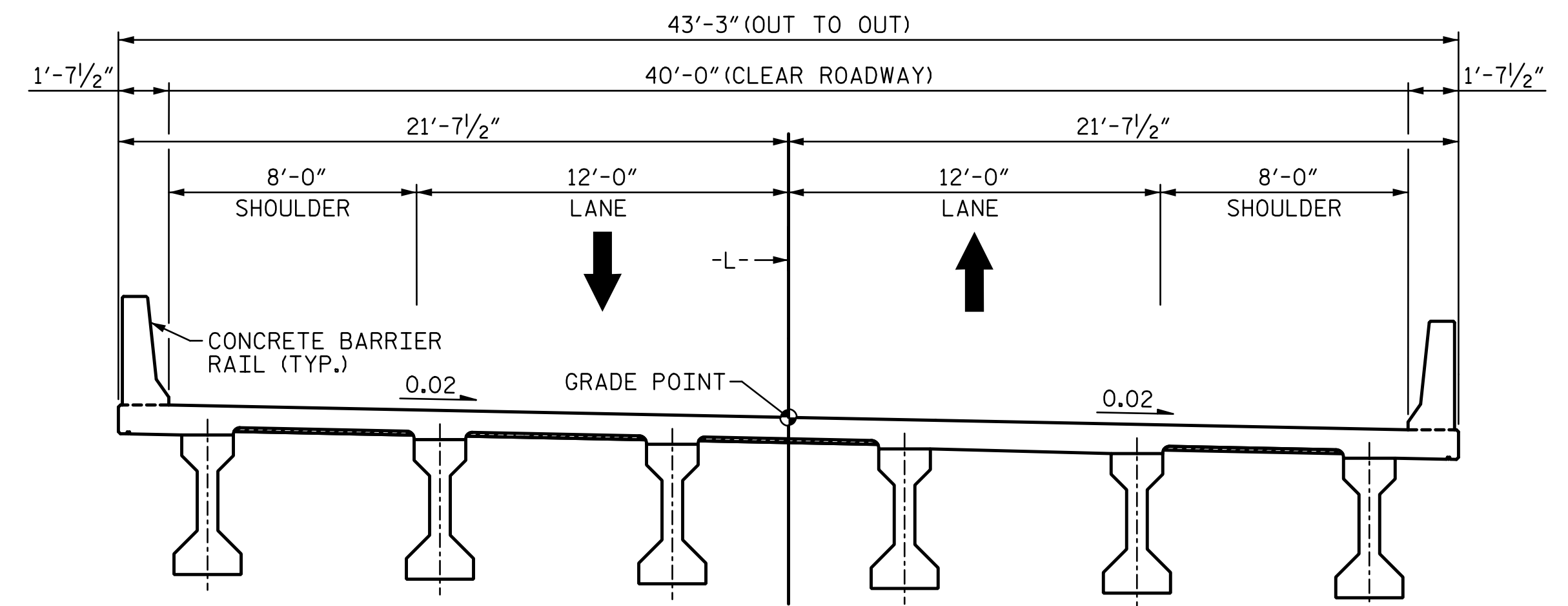


STAGE II CONSTRUCTION

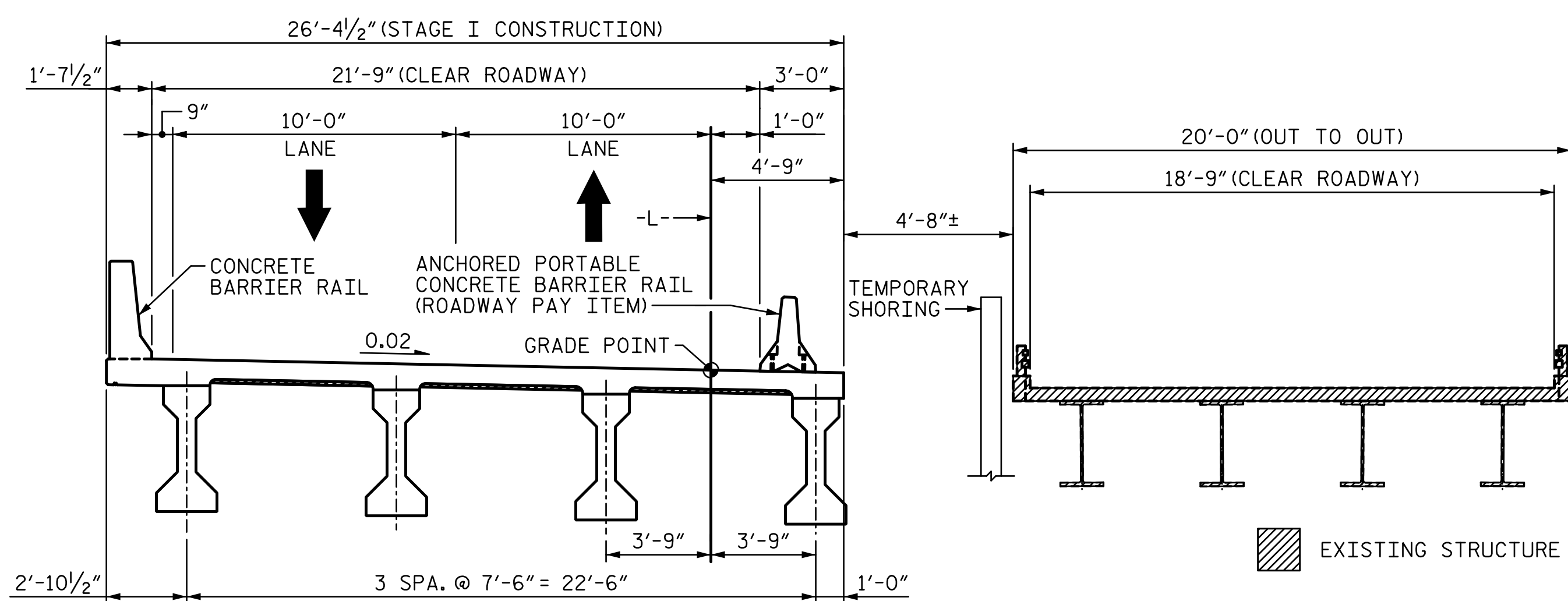


STAGE I CONSTRUCTION

FOR STAGE I PLAN VIEW, SEE SHEET 2 OF 2.



FINAL CONDITION



STAGE II DEMOLITION

SHIFT TRAFFIC TO STAGE I AND REMOVE EXISTING STRUCTURE.

PROJECT NO. BR-0029

MACON COUNTY

STATION: 15+52.07 -L-

SHEET 1 OF 2

STATE OF NORTH CAROLINA
DEPARTMENT OF TRANSPORTATION
RALEIGH

CONSTRUCTION SEQUENCE

REVISIONS						SHEET NO.
NO.	BY:	DATE:	NO.	BY:	DATE:	S-06
1			3			TOTAL SHEETS
2			4			33



4235 SOUTH STREAM BLVD.
SUITE 150,
CHARLOTTE, NC 28217
(704) 332-2289

NC LICENSE NO. C-2213



2/14/2022

DRAWN BY : D. LOFLIN DATE : 08-2021
CHECKED BY : A. PETER DATE : 09-2021
DESIGN ENGINEER OF RECORD : VINCENT M. WU DATE : 10-2021

**DOCUMENT NOT CONSIDERED FINAL
UNLESS ALL SIGNATURES COMPLETED**