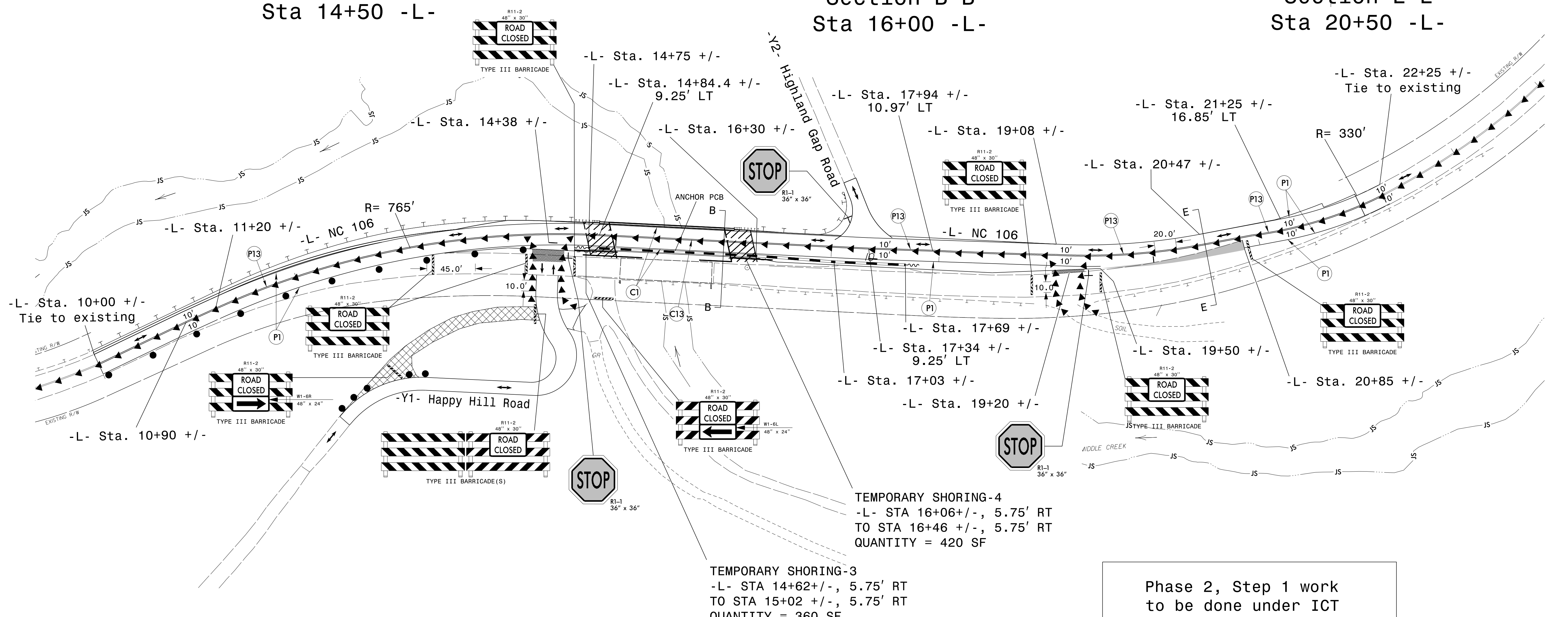


Section A-A
Sta 14+50 -L-

Section B-B
Sta 16+00 -L-

Section E-E
Sta 20+50 -L-



NOTES:

- 1) SEE TMP-4 FOR INFORMATION ABOUT PORTABLE SIGNAL.
- 2) SEE RSD 1101.06, SHEET 1 OF 1 FOR PLACEMENT OF ADVANCED WARNING SIGNS FOR BLASTING ZONE. USE PORTABLE SIGNAL IN ALL RED TO STOP TRAFFIC FOR A MAXIMUM OF 20 MINUTES AT A TIME DURING PERMITTED HOURS FOR STOPPING TRAFFIC.

TEMPORARY SHORING-4
-L- STA 16+06 +/-, 5.75' RT
TO STA 16+46 +/-, 5.75' RT
QUANTITY = 420 SF

TEMPORARY SHORING-3
-L- STA 14+62 +/-, 5.75' RT
TO STA 15+02 +/-, 5.75' RT
QUANTITY = 360 SF

Phase 2, Step 1 work
to be done under ICT

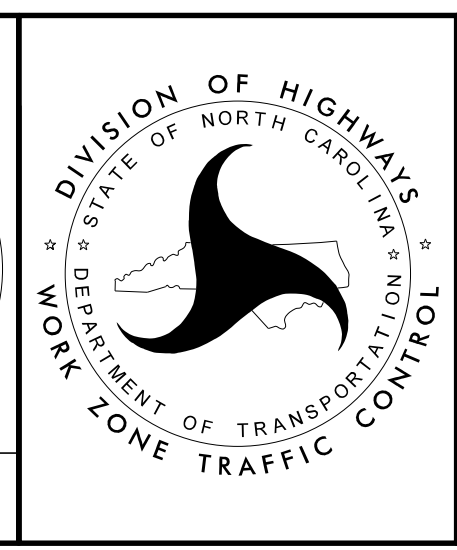
2/23/2022 R:\BR0029\TrafficControl\TCP\BR0029_TC_TCP2_Ph2-Step1-2.dgn User:White



APPROVED: *Lisa M. Moon*
DATE: 3/14/2022

SEAL

DOCUMENT NOT CONSIDERED FINAL
UNLESS ALL SIGNATURES COMPLETED



DIVISION OF HIGHWAYS
STATE OF NORTH CAROLINA
DEPARTMENT OF TRANSPORTATION
WORK ZONE TRAFFIC CONTROL

TEMPORARY TRAFFIC CONTROL
PHASE 2
(STEP 1)