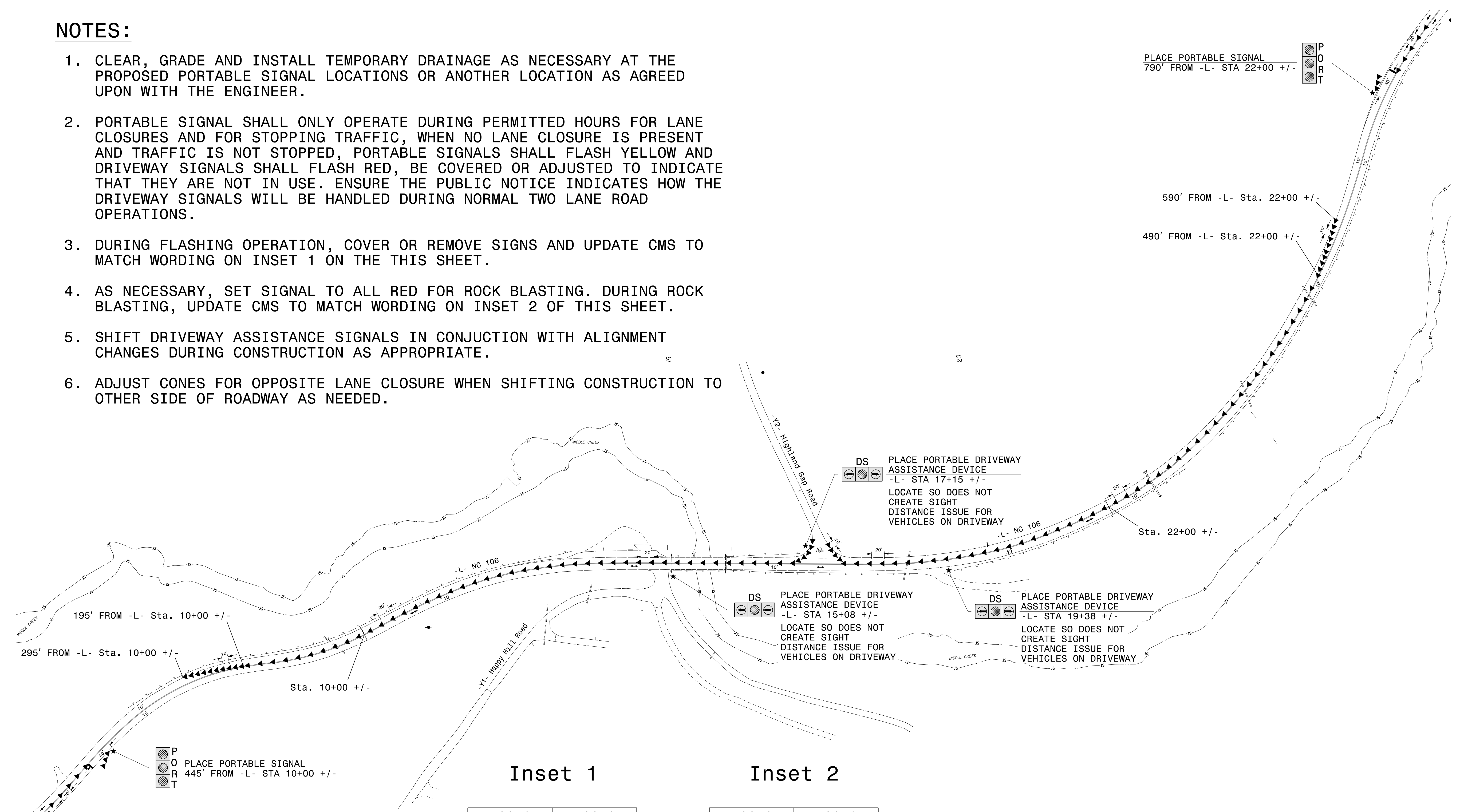


**NOTES:**

1. CLEAR, GRADE AND INSTALL TEMPORARY DRAINAGE AS NECESSARY AT THE PROPOSED PORTABLE SIGNAL LOCATIONS OR ANOTHER LOCATION AS AGREED UPON WITH THE ENGINEER.
2. PORTABLE SIGNAL SHALL ONLY OPERATE DURING PERMITTED HOURS FOR LANE CLOSURES AND FOR STOPPING TRAFFIC, WHEN NO LANE CLOSURE IS PRESENT AND TRAFFIC IS NOT STOPPED, PORTABLE SIGNALS SHALL FLASH YELLOW AND DRIVEWAY SIGNALS SHALL FLASH RED, BE COVERED OR ADJUSTED TO INDICATE THAT THEY ARE NOT IN USE. ENSURE THE PUBLIC NOTICE INDICATES HOW THE DRIVEWAY SIGNALS WILL BE HANDLED DURING NORMAL TWO LANE ROAD OPERATIONS.
3. DURING FLASHING OPERATION, COVER OR REMOVE SIGNS AND UPDATE CMS TO MATCH WORDING ON INSET 1 ON THIS SHEET.
4. AS NECESSARY, SET SIGNAL TO ALL RED FOR ROCK BLASTING. DURING ROCK BLASTING, UPDATE CMS TO MATCH WORDING ON INSET 2 OF THIS SHEET.
5. SHIFT DRIVEWAY ASSISTANCE SIGNALS IN CONJUNCTION WITH ALIGNMENT CHANGES DURING CONSTRUCTION AS APPROPRIATE.
6. ADJUST CONES FOR OPPOSITE LANE CLOSURE WHEN SHIFTING CONSTRUCTION TO OTHER SIDE OF ROADWAY AS NEEDED.



**LEGEND**

- PORTABLE SIGN
- DIRECTION OF TRAFFIC FLOW
- PORTABLE SIGNAL
- TRAFFIC CONE

MESSAGE NO. 1	MESSAGE NO. 2
ROAD WORK 1 MILE	USE CAUTION
CHANGEABLE MESSAGE SIGN	

MESSAGE NO. 1	MESSAGE NO. 2
ROCK BLASTING 1 MILE	PREPARE TO STOP
CHANGEABLE MESSAGE SIGN	

PLANS PREPARED BY:

**DRMP**  
ENGINEERS - PLANNERS - SCIENTISTS

DRMP, Inc.  
8000 Regency Parkway, Suite 110  
Cary, NC 27513  
NC License No. 02219 (9/19) 650-1038

APPROVED:

DATE: 3/14/2022

SEAL

**DOCUMENT NOT CONSIDERED FINAL UNLESS ALL SIGNATURES COMPLETED**

DIVISION OF HIGHWAYS  
STATE OF NORTH CAROLINA  
DEPARTMENT OF TRANSPORTATION  
WORK ZONE TRAFFIC CONTROL

TEMPORARY TRAFFIC CONTROL  
TEMPORARY LANE CLOSURES

12/20/2021 12:00:00 PM R:\BR0029\TrafficControl\TCP\BR0029\_TCP\_TEMP\_LANE\_CLOSURES.dgn User:IDWhite