

6/2/99

PROJECT REFERENCE NO. BR0029	SHEET NO. RW02C-1
---------------------------------	----------------------

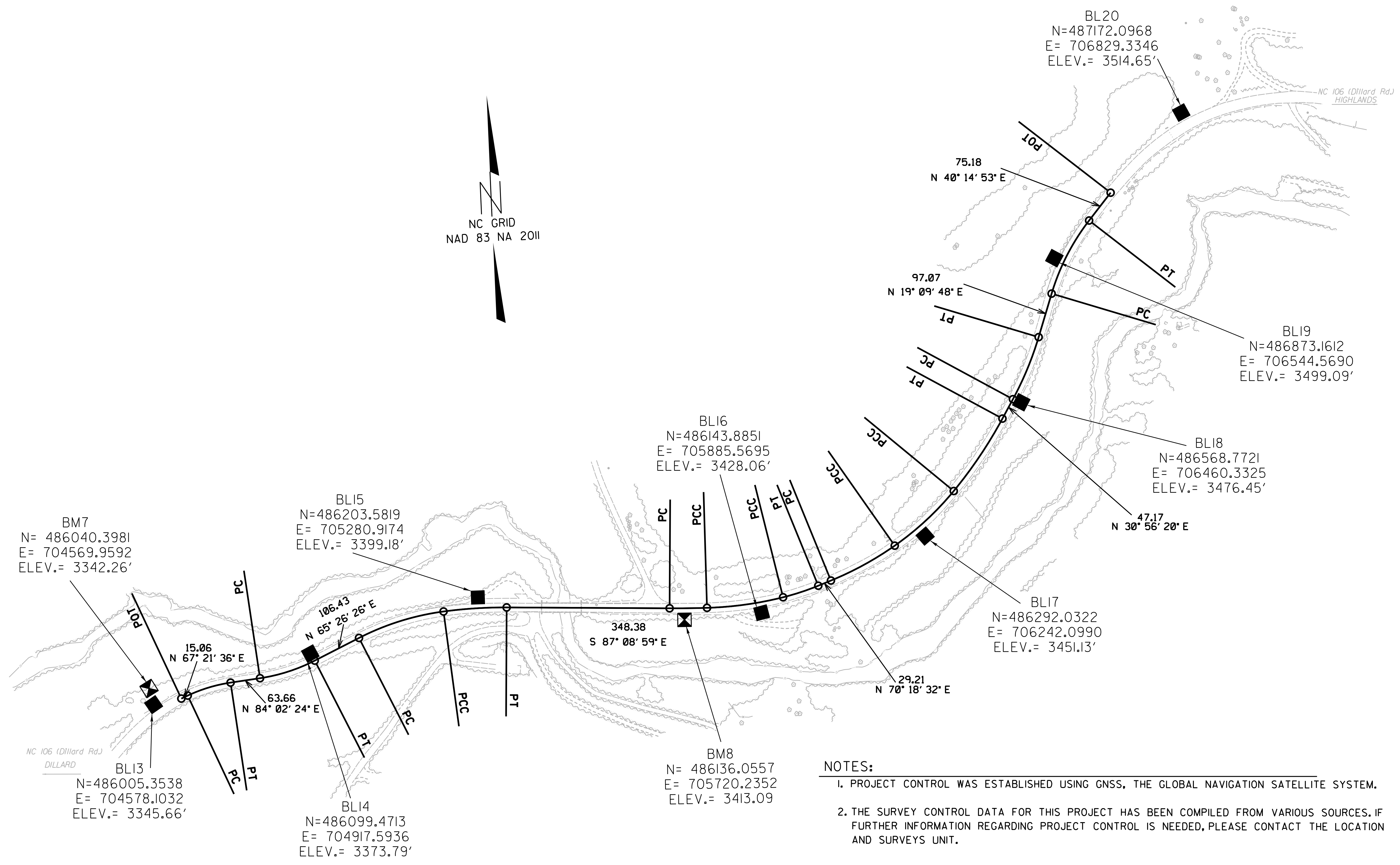
SURVEY CONTROL SHEET

W/EXISTING CENTERLINE ALIGNMENTS PRIOR TO CONSTRUCTION

Location and Surveys

SEE SHEET RW02C-2
FOR FURTHER
ALIGNMENT DETAILS

REVISIONS



BM7
N= 486040.3981
E= 704569.9592
ELEV.= 3342.26'

BL15
N=486203.5819
E= 705280.9174
ELEV.= 3399.18'

BL16
N=486143.8851
E= 705885.5695
ELEV.= 3428.06'

BL19
N=486873.1612
E= 706544.5690
ELEV.= 3499.09'

BL18
N=486568.7721
E= 706460.3325
ELEV.= 3476.45'

BL17
N=486292.0322
E= 706242.0990
ELEV.= 3451.13'

BM8
N= 486136.0557
E= 705720.2352
ELEV.= 3413.09'

BL13
N=486005.3538
E= 704578.1032
ELEV.= 3345.66'

BL14
N=486099.4713
E= 704917.5936
ELEV.= 3373.79'

NOTES:

1. PROJECT CONTROL WAS ESTABLISHED USING GNSS, THE GLOBAL NAVIGATION SATELLITE SYSTEM.
2. THE SURVEY CONTROL DATA FOR THIS PROJECT HAS BEEN COMPILED FROM VARIOUS SOURCES. IF FURTHER INFORMATION REGARDING PROJECT CONTROL IS NEEDED, PLEASE CONTACT THE LOCATION AND SURVEYS UNIT.

26-3110-2018-1123
L:\3570\357001\11\1123\1123.dwg
6/2/99