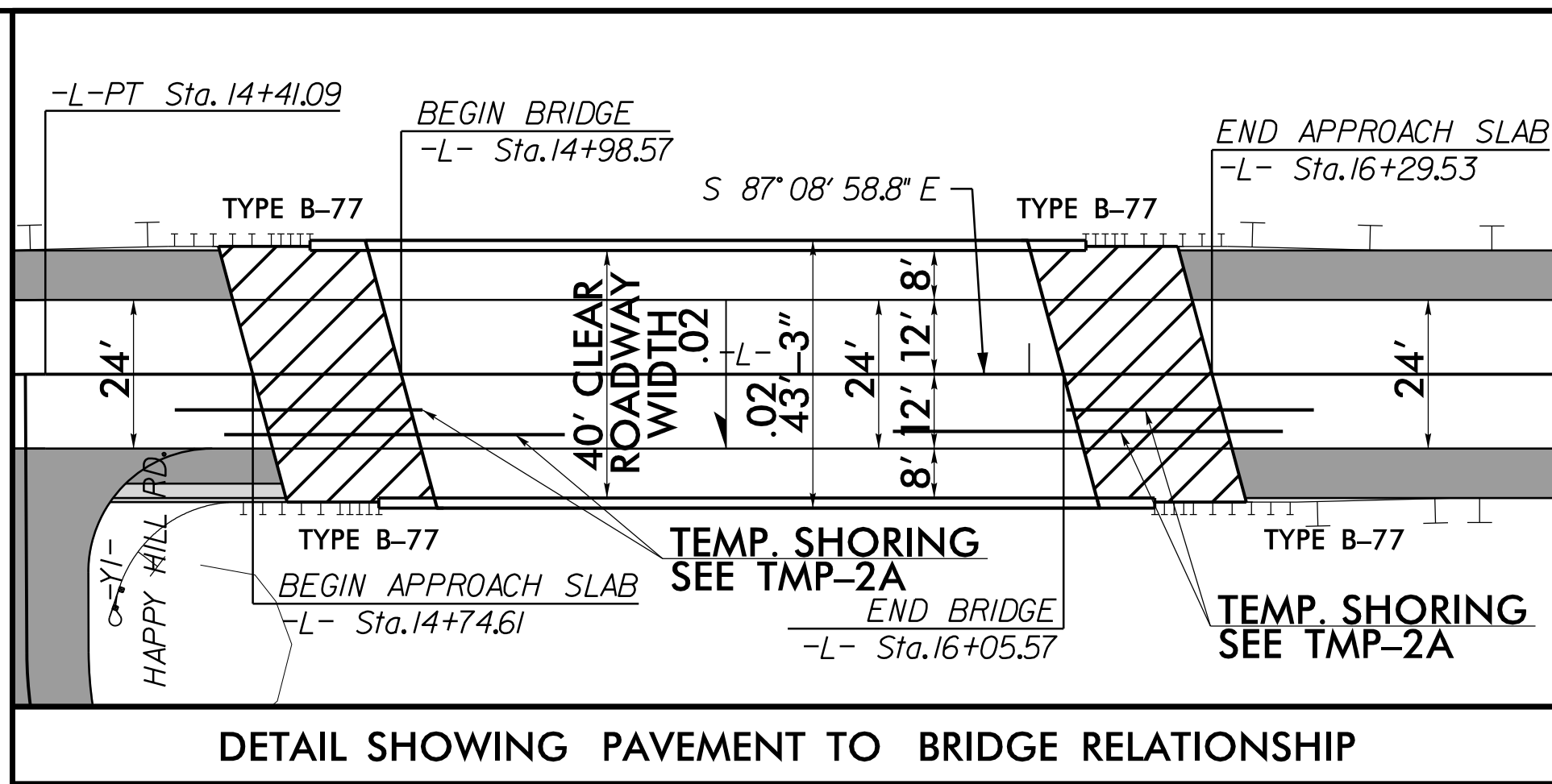


PROJECT REFERENCE NO. BR-0029	SHEET NO. 4
RW SHEET NO.	HYDRAULICS ENGINEER
ROADWAY DESIGN ENGINEER	SEAL 019740
SEAL 019740	SEAL 044113
CHARTERED PROFESSIONAL ENGINEER	CHARTERED PROFESSIONAL ENGINEER
Christopher K. Harris 3/21/2022	Ryan P. Mitchell 3/21/2022

**DOCUMENT NOT CONSIDERED FINAL UNLESS ALL SIGNATURES COMPLETED**

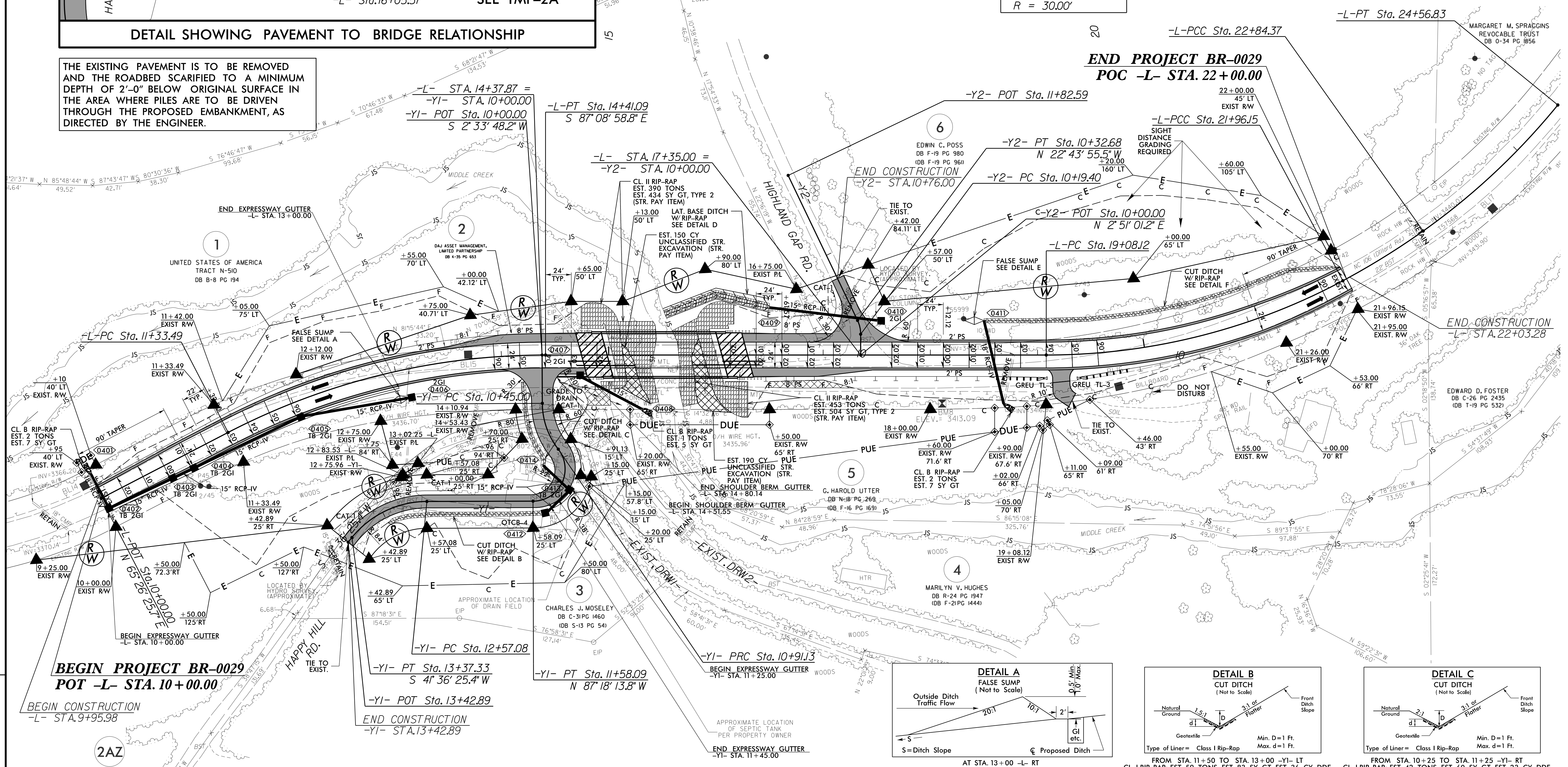
PLANS PREPARED BY:  
**DRMP**  
DRMP, INC.  
4235 SOUTH STREAM BLVD., SUITE 150  
CHARLOTTE, NC 28217  
N.C. LICENSE NO. C-2215 (TRM) 332-2289



PI Sta	Δ	D	L	T	R	V	RO	SE
12+90.29	27° 24' 35.5" (RT)	8' 54' 38.5"	307.61'	156.81'	643.00'	45 MPH	144'	0.06
20+55.10	28° 06' 50.7" (LT)	9' 45' 38.8"	288.03'	146.98'	587.00'	40 MPH	144'	0.06
22+40.32	7° 16' 22.6" (LT)	8' 14' 40.5"	88.21'	44.17'	694.95'	45 MPH	144'	0.06
23+71.12	15° 26' 21.0" (LT)	8' 57' 08.8"	172.46'	86.75'	640.00'	45 MPH	144'	0.06

PI Sta	Δ	D	L	T	R
10+26.15	25° 21' 28.6" (LT)	190' 59' 09.4"	13.28'	6.75'	30.00'

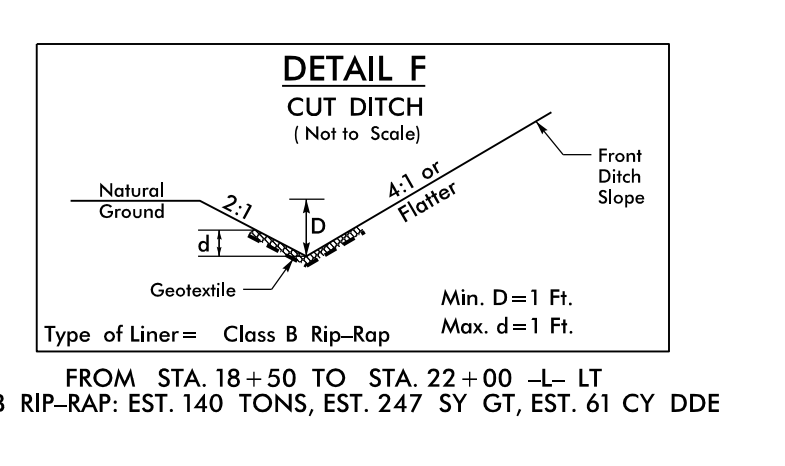
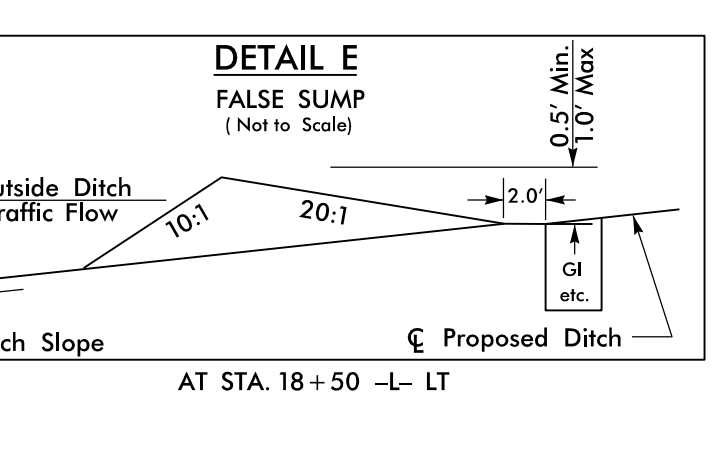
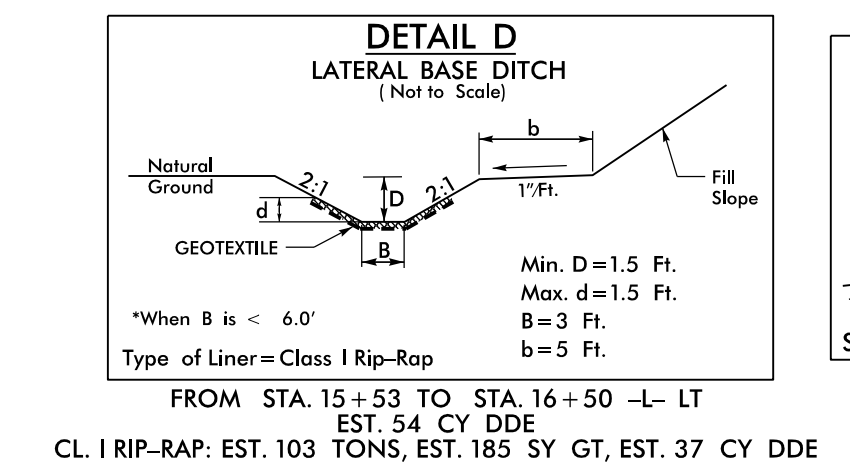
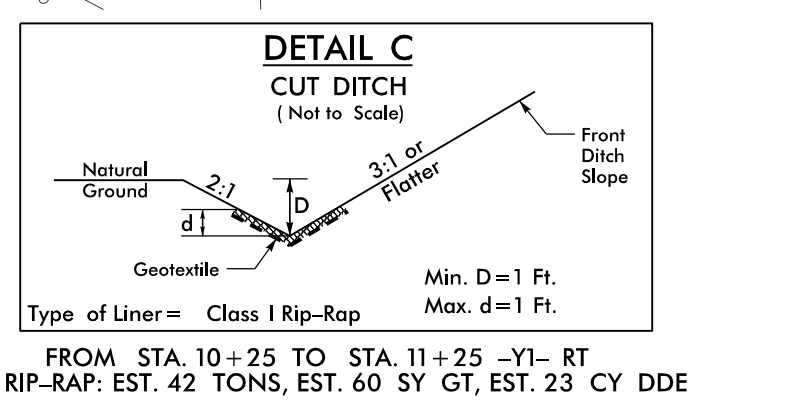
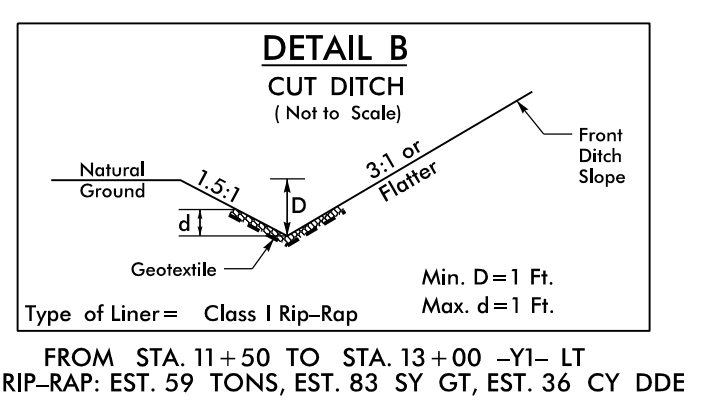
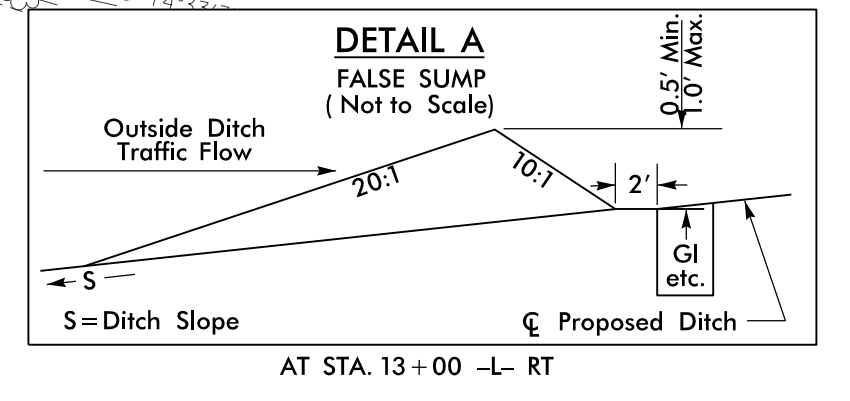
THE EXISTING PAVEMENT IS TO BE REMOVED AND THE ROADBED SCARIFIED TO A MINIMUM DEPTH OF 2'-0" BELOW ORIGINAL SURFACE IN THE AREA WHERE PILES ARE TO BE DRIVEN THROUGH THE PROPOSED EMBANKMENT, AS DIRECTED BY THE ENGINEER.



**BEGIN PROJECT BR-0029**  
**POT -L- STA. 10+00.00**

FOR STRUCTURE PLANS SEE SHEETS S-1 TO S-33  
FOR -L- and -Y1- PROFILE SEE SHEET 05  
FOR -Y2- PROFILE SEE SHEET 06

PI Sta	Δ	D	L	T	R
10+68.94	37° 45' 28.5" (LT)	81' 51' 04.0"	46.13'	23.94'	70.00'
11+52.49	127° 53' 26.4" (RT)	190' 59' 09.4"	66.96'	61.36'	30.00'
13+00.09	51° 05' 20.7" (LT)	63' 39' 43.1"	80.25'	43.01'	90.00'



REVISIONS

8/17/99  
 2/28/2022 4:53:49 PM R:\BR0029\Roadway\1\BR0029\_Rwy.dgn  
 3/21/2022 10:00:00 AM R:\BR0029\Roadway\1\BR0029\_Rwy.dgn