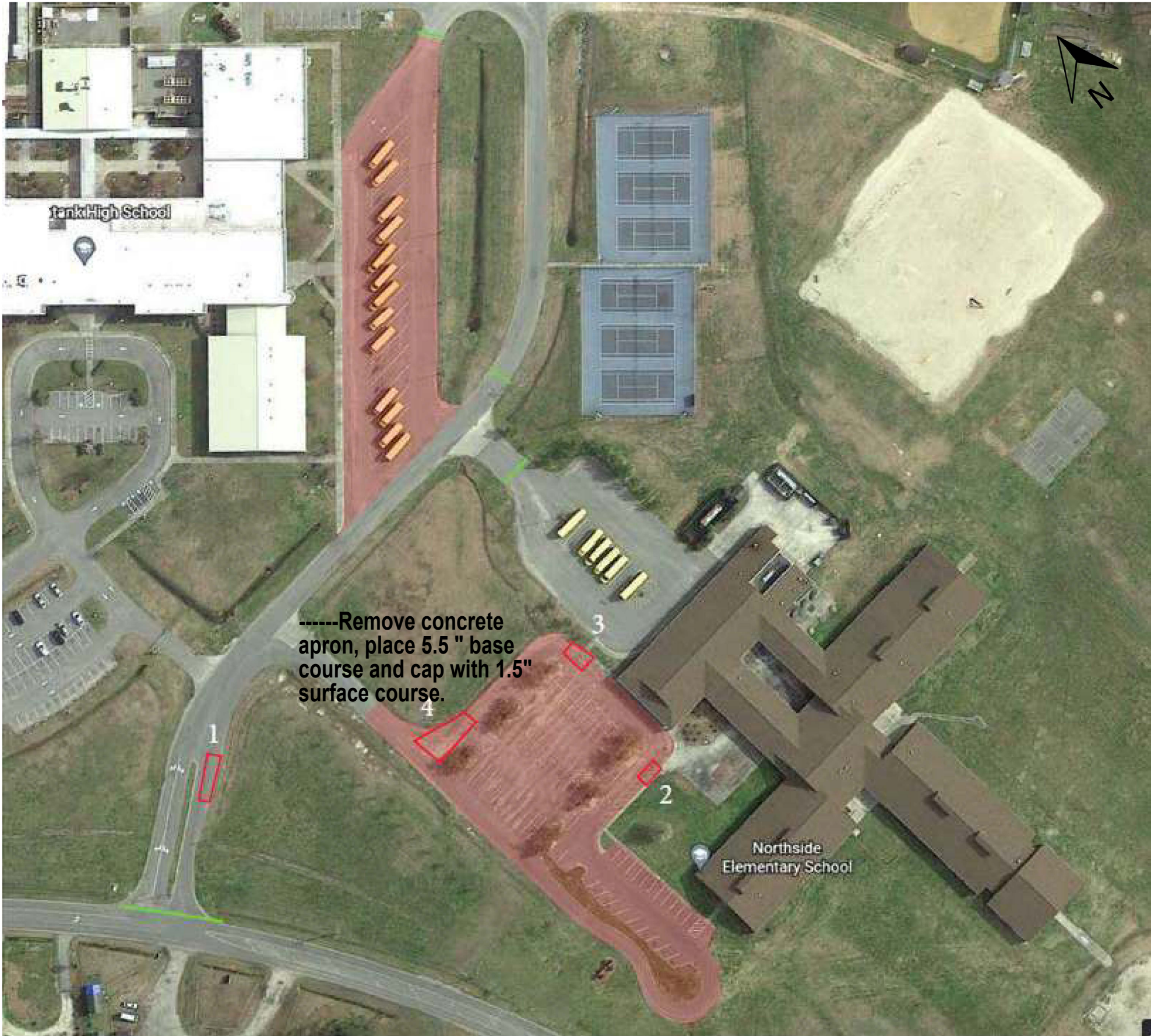
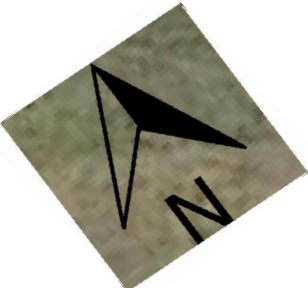


MAPS 17-20 - Pasquotank County  
High School Bus Parking &  
Northside Complex Proposal

2023CPT.01.07.20151.1, ETC.



- Areas Boxed and Numbered are approximate areas that will need full depth patching
- Shaded area will be milled and filled 1.5" to preserve handicap ramps
- Paving limits are marked with green lines
- Area within limits but not shaded will be overlaid with 1.5" asphalt
- Estimate paint is based on painting back all lines and symbols exactly as painted currently
- Handicap parking symbols, writing and parking space numbers will not be repainted
- Any speed bumps to be milled will be considered incidental
- Milling can be feathered out in the bus parking lot if there is sufficient grade for drainage
- School system will be responsible for removing parking blocks