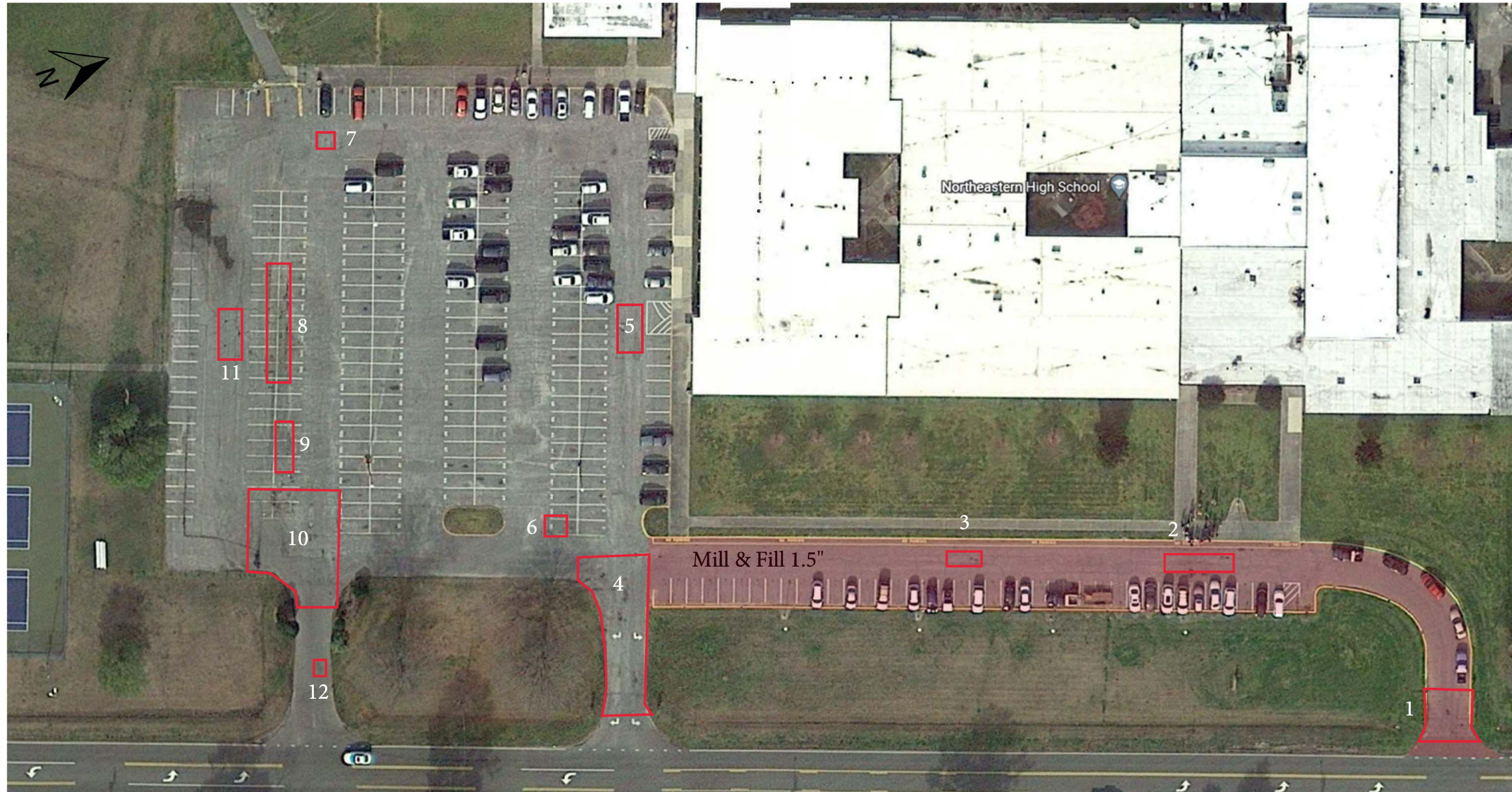


MAP 14 - Northeastern High School  
Front Parking Proposal

2023CPT.01.07.20151.1, ETC.



- Areas Boxed and Numbered are approximate areas that will need full depth patching
- Shaded area will be milled and filled 1.5" to preserve handicap ramps
- Estimate paint is based on painting back all lines and symbols exactly as painted currently
- Handicap parking symbols, writing, and parking space numbers will not be repainted
- In the parking area where there is no milling, pavement will be overlaid flush to the curb
- Any speed bumps to be milled will be considered incidental