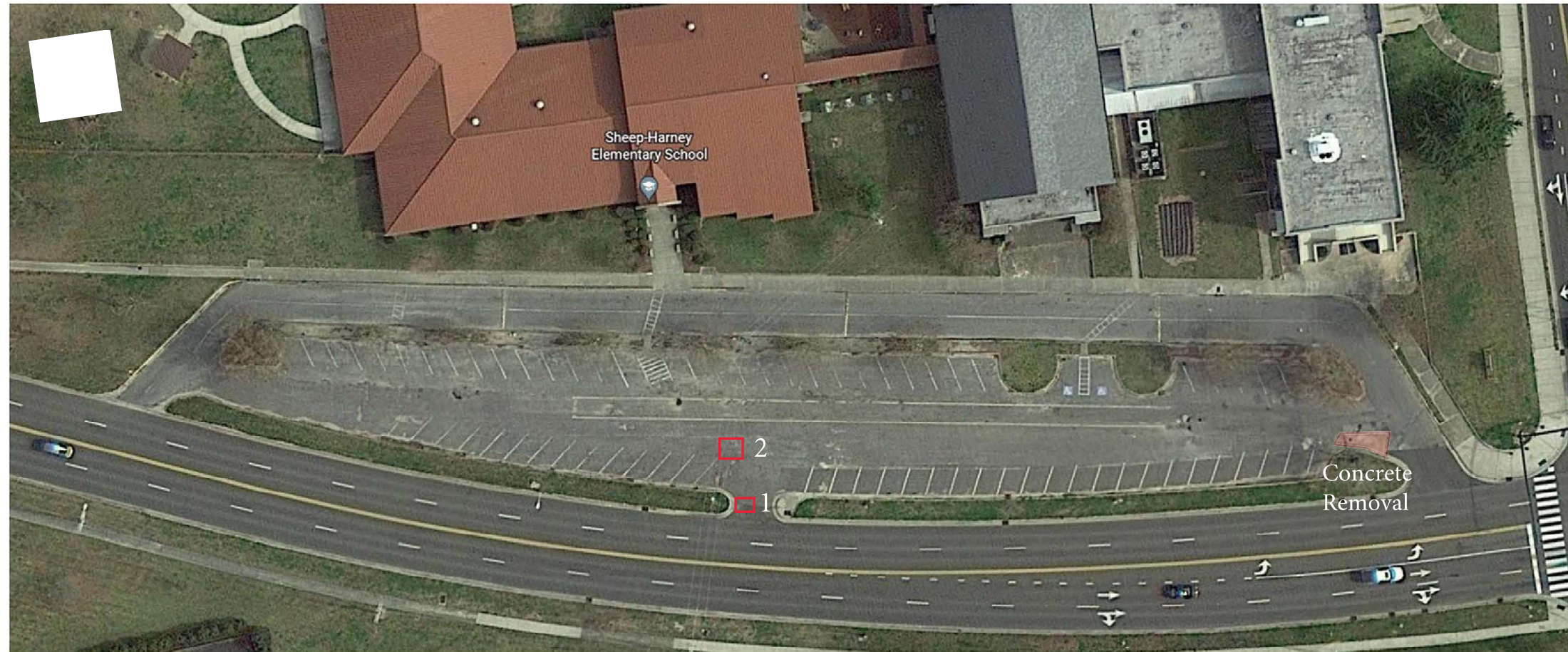


PASQUOTANK COUNTY

MAP 13 - Sheep Harney Elementary School Proposal



- Areas Boxed and Numbered are approximate areas that will need full depth patching
- Whole parking lot will be milled and filled with 1.5" asphalt
- Estimate paint is based on painting back all lines and symbols exactly as painted currently
- Handicap parking symbols, writing, and parking space numbers will not be repainted
- Trees will be removed from the median between the driveway and parking lot
- Concrete marked at the entrance will have to be removed and patched
- Curb & Gutter will be placed on the left side of the driveway all the way around
- Crosswalks will be installed as High Visibility crosswalks
- Any speed bumps to be milled will be considered incidental
- Milling can be feathered out in the parking lot if there is sufficient grade for drainage