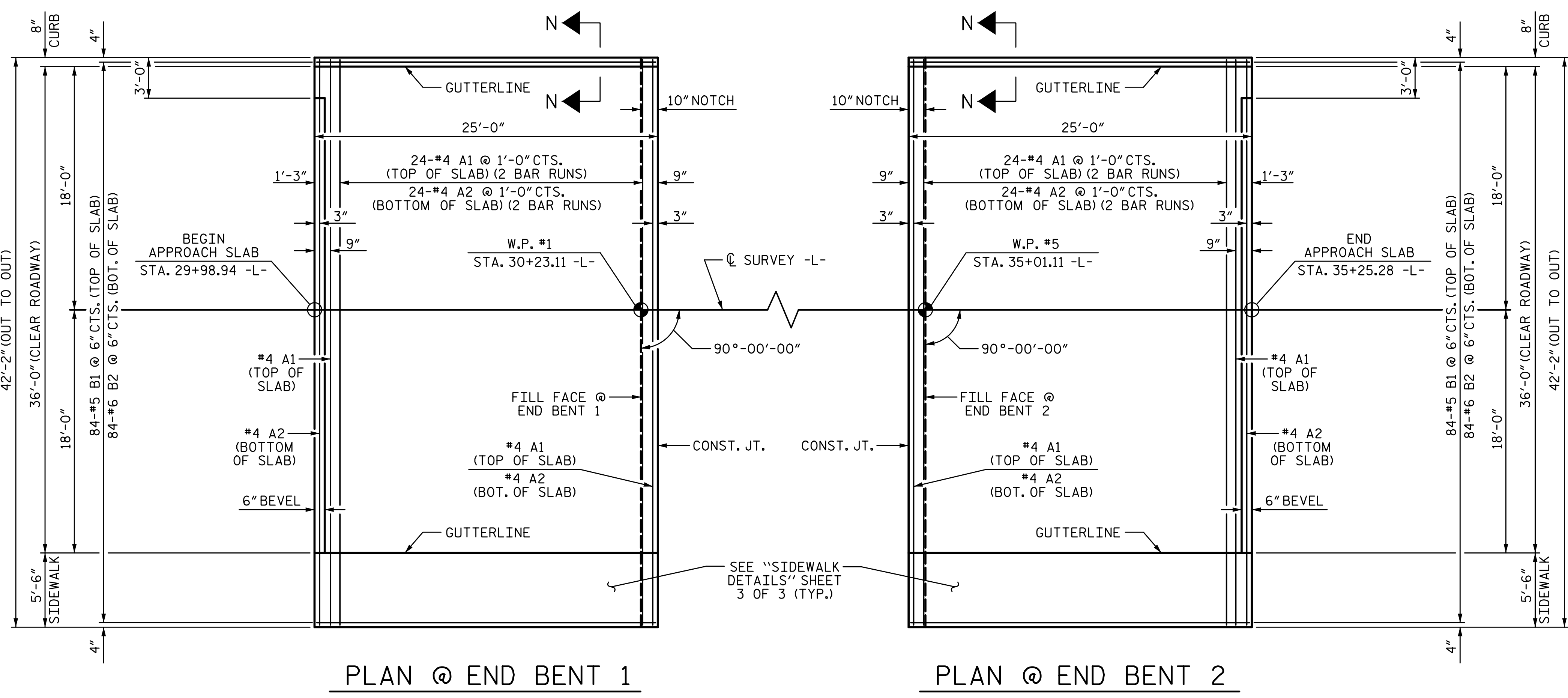
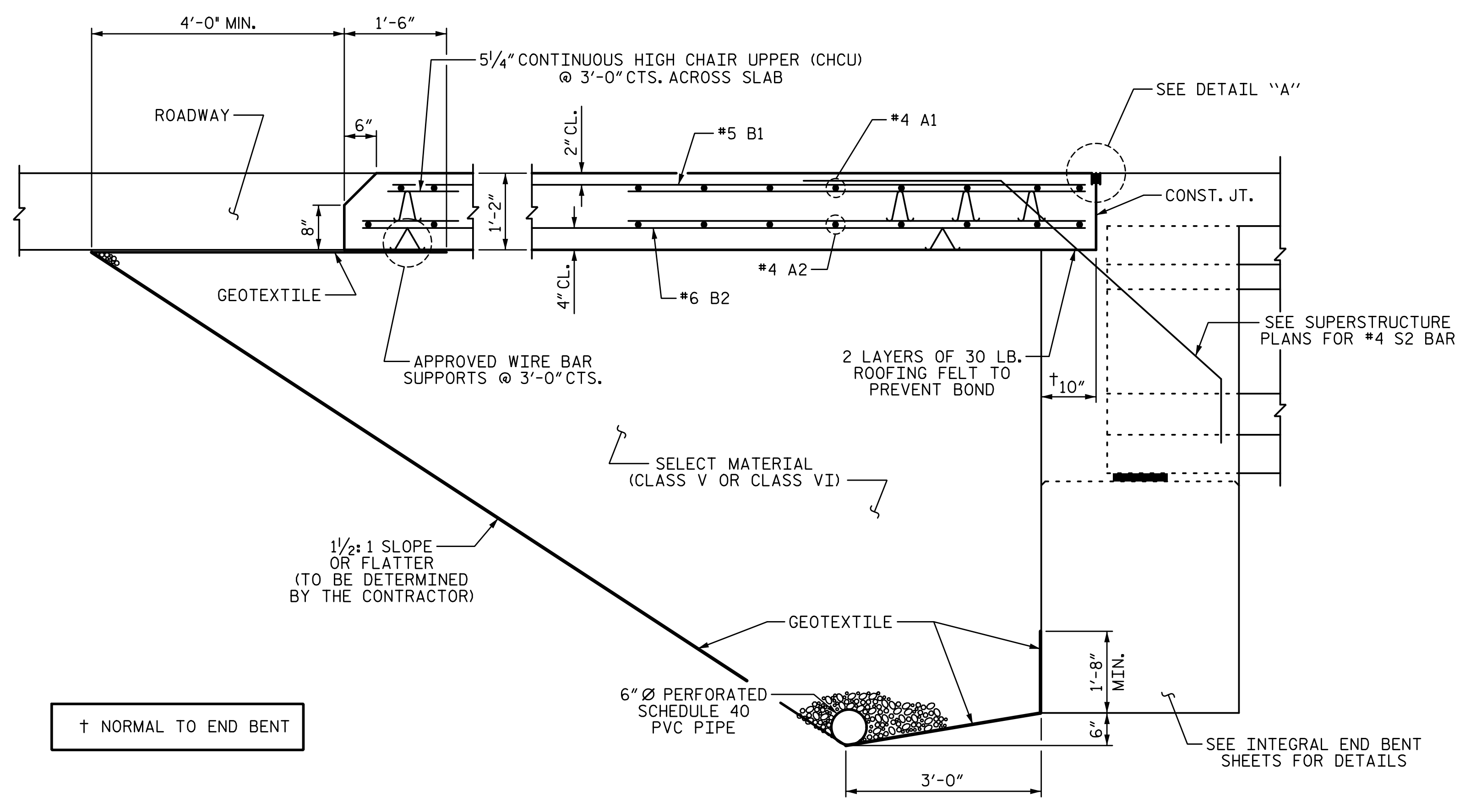


8/25/2022 2:05:22 PM P:\RailDiv\Structures\Drawings\Final\Y4810K_SMU_AS.dgn

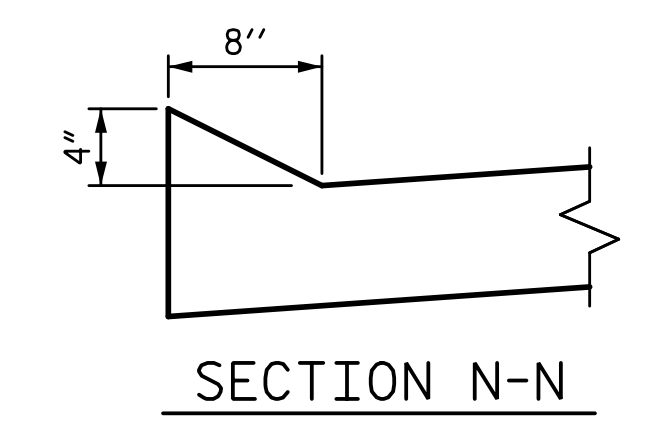


PLAN @ END BENT 1

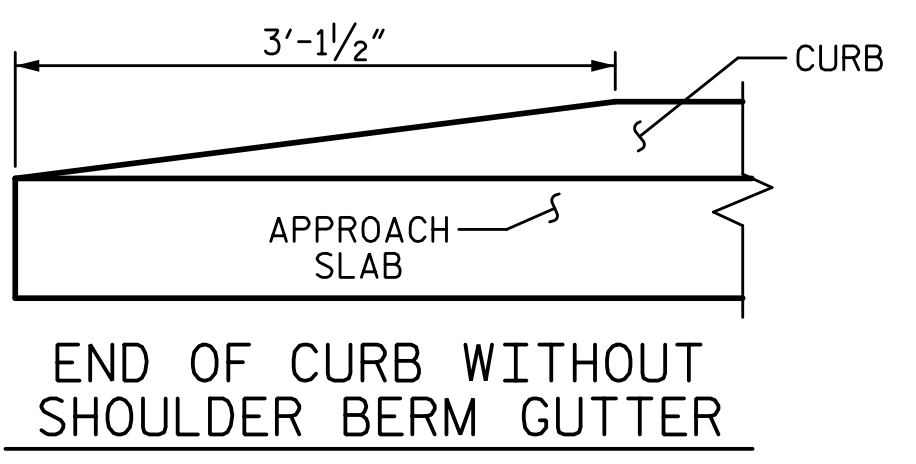
PLAN @ END BENT 2



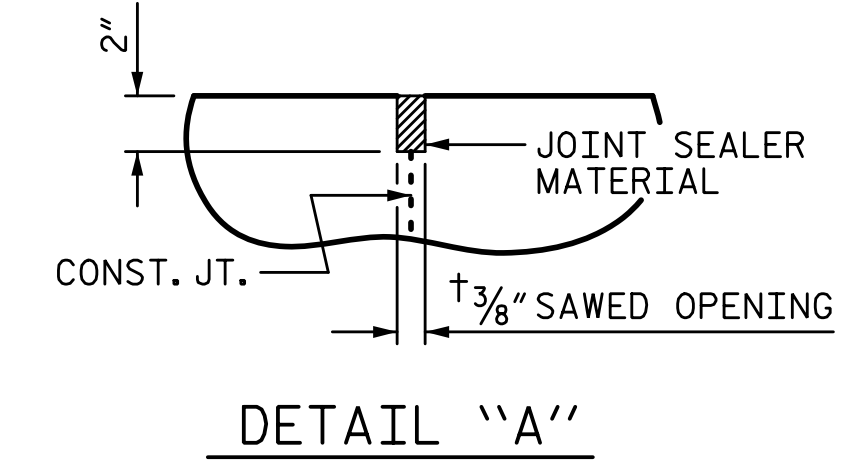
SECTION THRU SLAB
(TYPE I - STANDARD APPROACH FILL)



SECTION N-N



CURB DETAILS

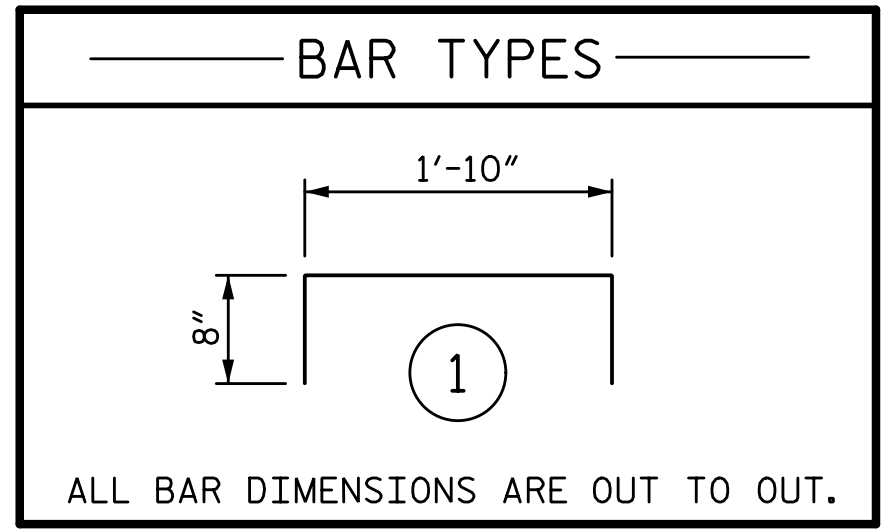


DETAIL "A"

NOTES:
 APPROACH SLAB SHALL NOT BE CONSTRUCTED PRIOR TO COMPLETION OF THE BRIDGE DECK.
 FOR BRIDGE APPROACH FILL INCLUDING GEOTEXTILE, 6" Ø DRAINAGE PIPE, AND SELECT MATERIAL, SEE ROADWAY PLANS.
 GEOTEXTILE SHALL BE TYPE 1 IN ACCORDANCE WITH THE STANDARD SPECIFICATIONS SECTION 1056.
 SELECT MATERIAL BACKFILL (CLASS V OR CLASS VI) SHALL BE IN ACCORDANCE WITH STANDARD SPECIFICATIONS SECTION 1016.
 SELECT MATERIAL BACKFILL IS TO BE CONTINUOUS ALONG FILL FACE OF BACKWALL FROM OUTSIDE EDGE TO OUTSIDE EDGE OF APPROACH SLAB.
 FOR THE 6" Ø DRAINAGE PIPE OUTLET(S), SEE ROADWAY STANDARD DRAWINGS.
 AREA BETWEEN THE WINGWALL AND APPROACH SLAB/DECK INTERFACE SHALL BE SAWED NO MORE THAN 12 HOURS AFTER THE APPROACH SLAB IS CAST. THE JOINT SHALL BE CLEANED OF ALL DEBRIS BEFORE THE SEALANT IS APPLIED. THE JOINT SEALER MATERIAL SHALL CONFORM TO THE REQUIREMENTS OF SECTION 1028-3 OF THE STANDARD SPECIFICATIONS.
 AT THE CONTRACTORS OPTION, "TYPE A - ALTERNATE APPROACH FILL" IN LIEU OF "TYPE I - STANDARD APPROACH FILL" MAY BE CONSTRUCTED AT NO ADDITIONAL COST TO THE DEPARTMENT. SEE SHEET 2 OF 3 FOR DETAILS AND NOTES.

BILL OF MATERIAL FOR APPROACH SLAB @ END BENT 1					
BAR	NO.	SIZE	TYPE	LENGTH	WEIGHT
*A1	52	#4	STR	21'-11"	761
A2	52	#4	STR	21'-10"	758
*B1	84	#5	STR	24'-2"	2117
B2	84	#6	STR	24'-8"	3112
*B3	4	#4	STR	24'-8"	66
*G1	25	#4	STR	4'-11"	82
*U1	8	#4	1	3'-2"	17
REINFORCING STEEL					3870 LB
EPOXY COATED REINFORCING STEEL					3043 LB
CLASS AA CONCRETE					
POUR 1 (SLAB & CURB)					45.5 CY
POUR 2 (SIDEWALK)					3.1 CY
TOTAL					48.6 CY

BILL OF MATERIAL FOR APPROACH SLAB @ END BENT 2					
BAR	NO.	SIZE	TYPE	LENGTH	WEIGHT
*A1	52	#4	STR	21'-11"	761
A2	52	#4	STR	21'-10"	758
*B1	84	#5	STR	24'-2"	2117
B2	84	#6	STR	24'-8"	3112
*B3	4	#4	STR	24'-8"	66
*G1	25	#4	STR	4'-11"	82
*U1	8	#4	1	3'-2"	17
REINFORCING STEEL					3870 LB
EPOXY COATED REINFORCING STEEL					3043 LB
CLASS AA CONCRETE					
POUR 1 (SLAB & CURB)					45.5 CY
POUR 2 (SIDEWALK)					3.1 CY
TOTAL					48.6 CY



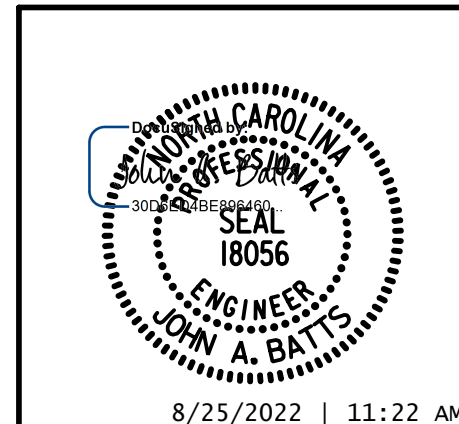
SPLICE CHART		
BAR SIZE	EPOXY COATED	UNCOATED
#4	2'-0"	1'-9"
#5	2'-6"	2'-2"
#6	3'-10"	2'-7"

PROJECT NO. Y-4810K
CABARRUS COUNTY
 STATION: 31+94.08 -L-

SHEET 1 OF 3

STATE OF NORTH CAROLINA
 DEPARTMENT OF TRANSPORTATION
 RALEIGH

BRIDGE APPROACH SLAB FOR INTEGRAL END BENT



DRAWN BY: S.D. COOPER DATE: 2-19
 CHECKED BY: J. A. BATTS DATE: 2-19
 DESIGN ENGINEER OF RECORD: J. A. BATTS DATE: 2-19

REVISIONS				SHEET NO.	
NO.	BY:	DATE:	NO.	BY:	DATE:
1			3		
2			4		

DOCUMENT NOT CONSIDERED FINAL UNLESS ALL SIGNATURES COMPLETED

TOTAL SHEETS: 53