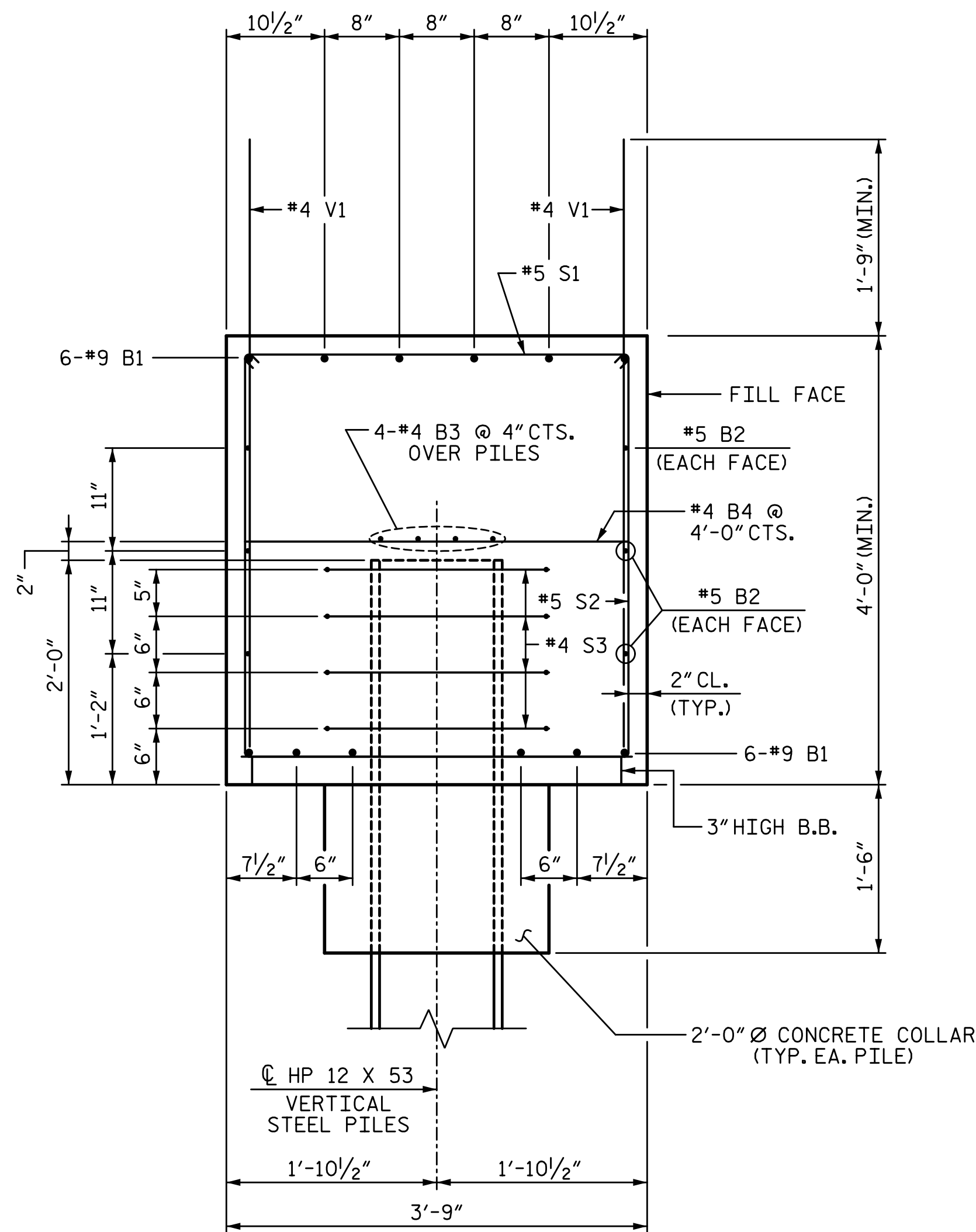
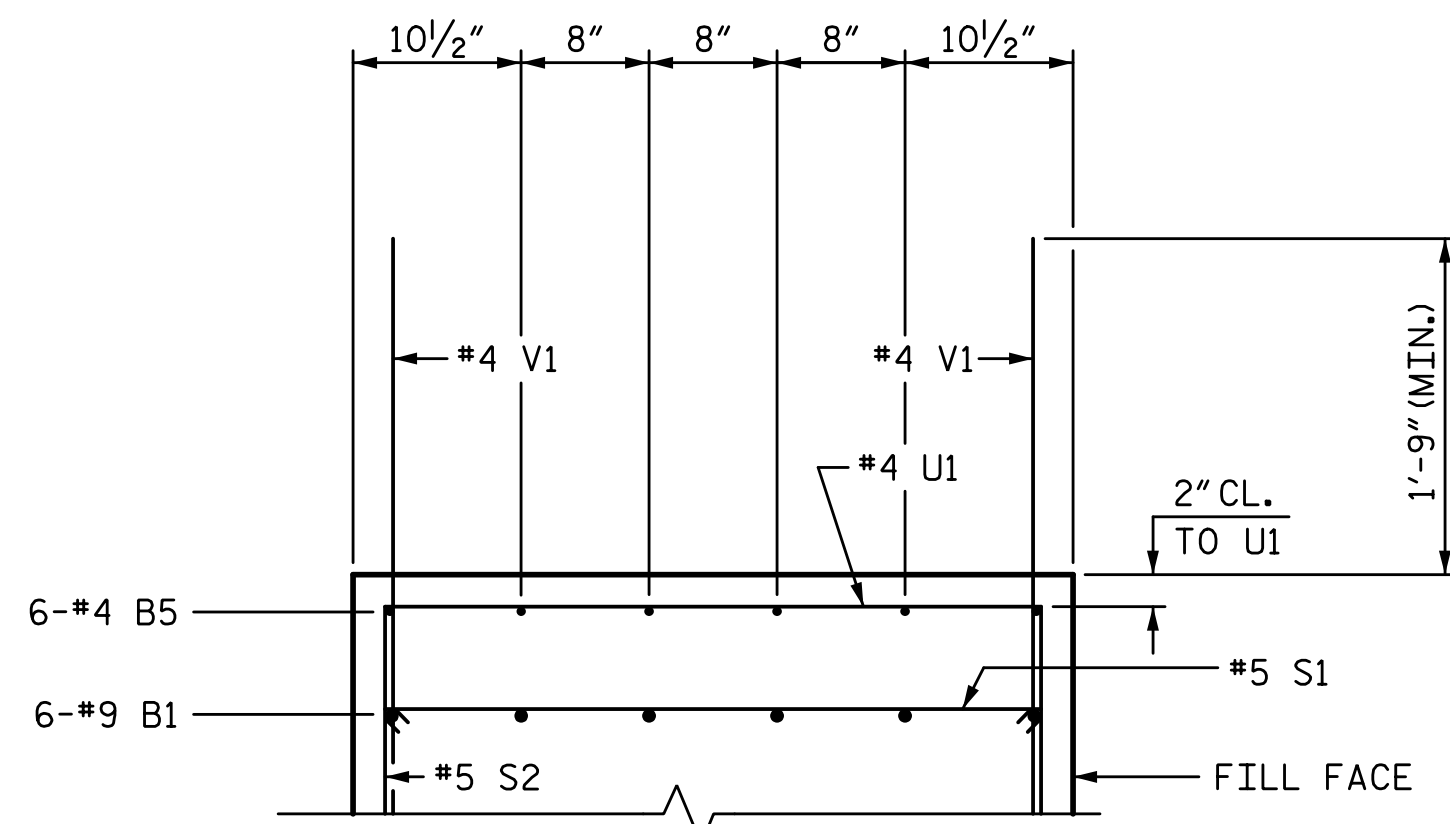


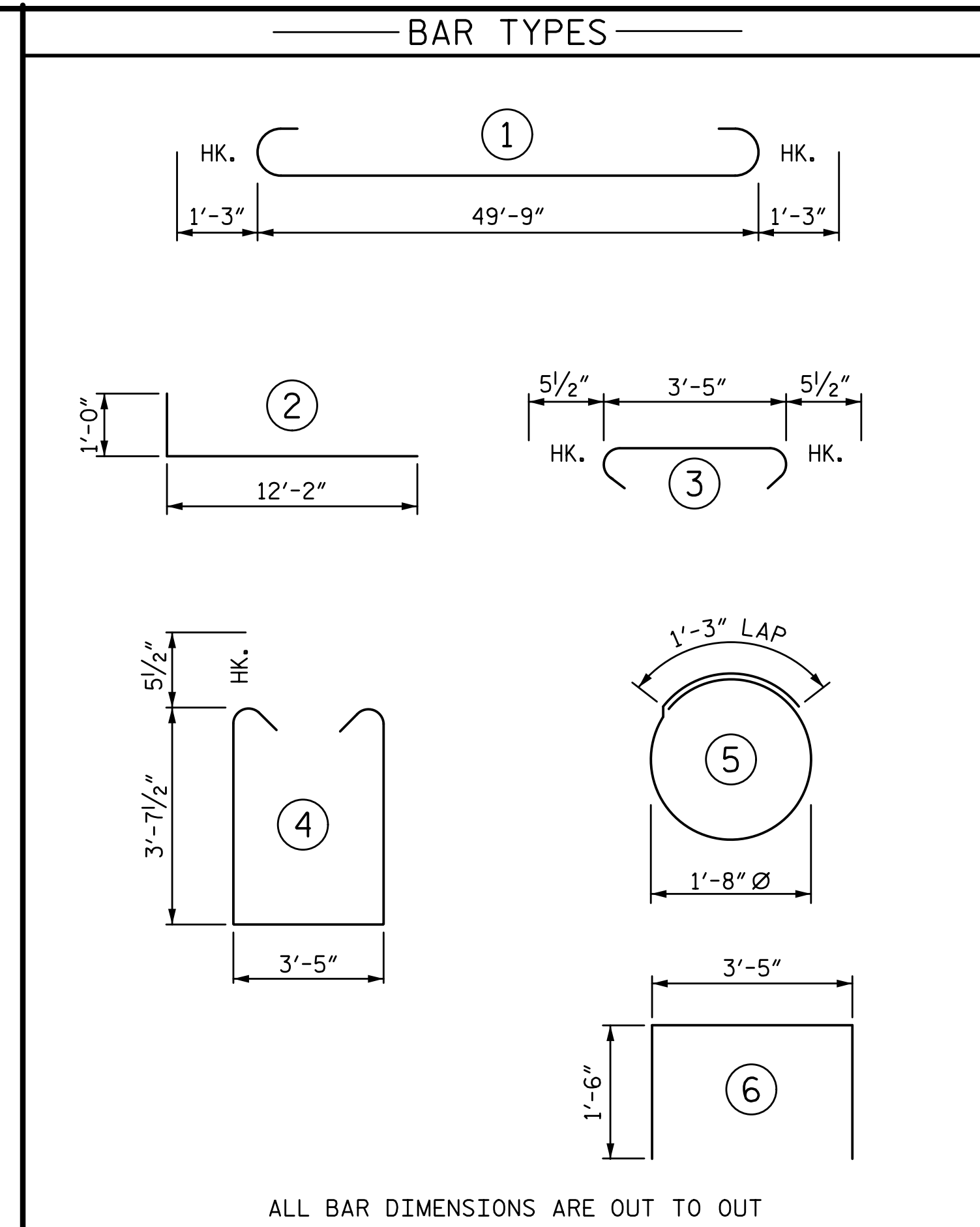
8/25/2022 2:05:20 PM P:\Rail\Projects\2015\Y-4810K (NCDOT Rail)\Structures\Drawings\Final\Y4810K_SMU_EB2.dgn



SECTION A-A

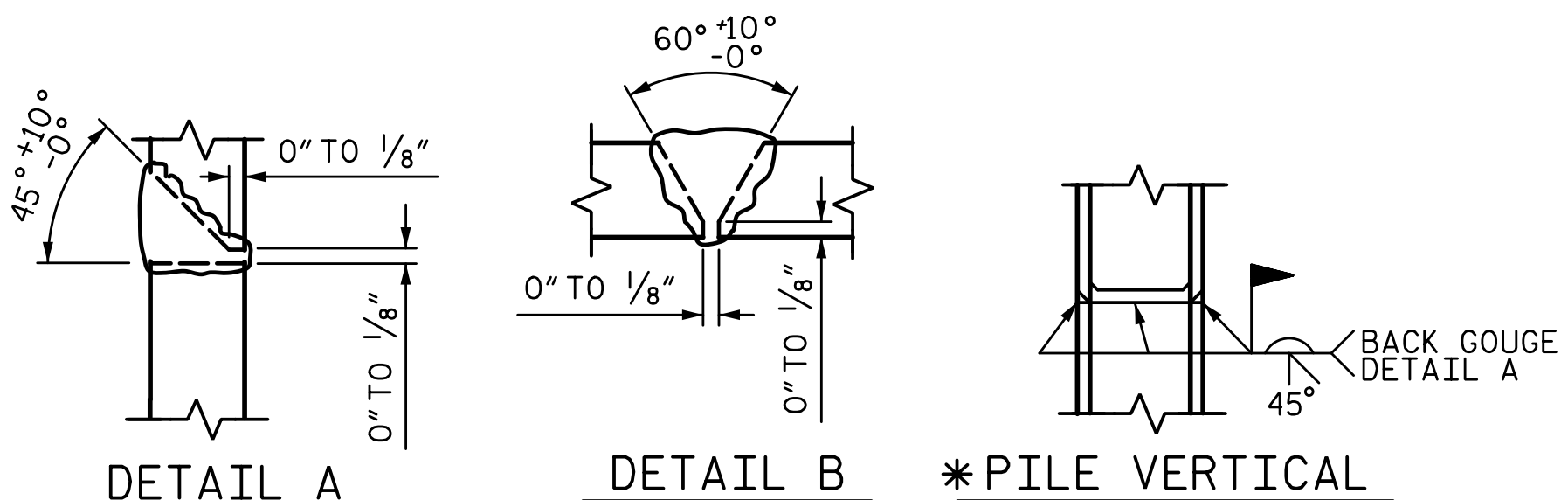


PARTIAL SECTION B-B

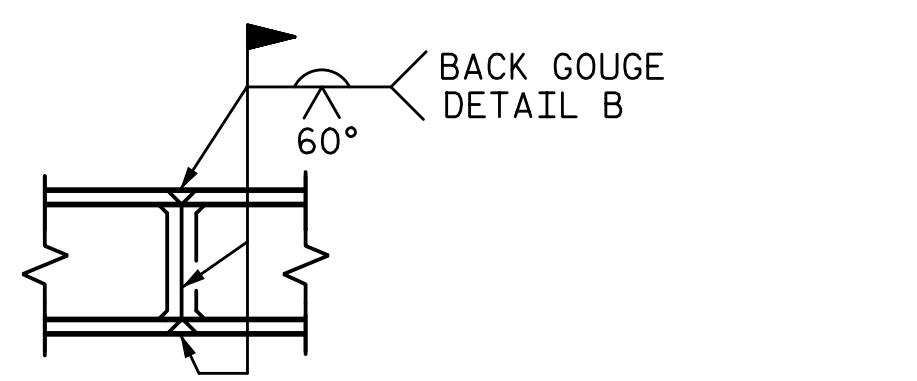


ALL BAR DIMENSIONS ARE OUT TO OUT

BILL OF MATERIAL					
END BENT 2					
BAR	NO.	SIZE	TYPE	LENGTH	WEIGHT
B1	12	#9	1	52'-3"	2132
B2	6	#5	STR	49'-9"	311
B3	8	#4	STR	26'-2"	140
B4	13	#4	STR	3'-5"	30
B5	6	#4	STR	12'-6"	50
H1	94	#6	2	13'-2"	1859
K1	30	#4	STR	3'-4"	67
K2	32	#4	STR	4'-0"	86
S1	56	#5	3	4'-4"	253
S2	56	#5	4	11'-7"	677
S3	40	#4	5	6'-6"	174
U1	9	#4	6	6'-5"	39
V1	64	#4	STR	6'-0"	257
V2	36	#5	STR	11'-3"	422
V3	38	#5	STR	11'-6"	456
TOTAL REINFORCING STEEL					6953 LB
CLASS A CONCRETE					
POUR 1					
(CAP, COLLARS, & LOWER WINGS) 34.2 CY					
POUR 2					
(UPPER WINGS) 8.5 CY					
TOTAL CLASS A CONCRETE					42.7 CY
HP 12 X 53 STEEL PILES					
NO. 10					525.0 LF
PILE DRIVING EQUIPMENT SETUP					
HP 12 X 53 STEEL PILES					10 EA

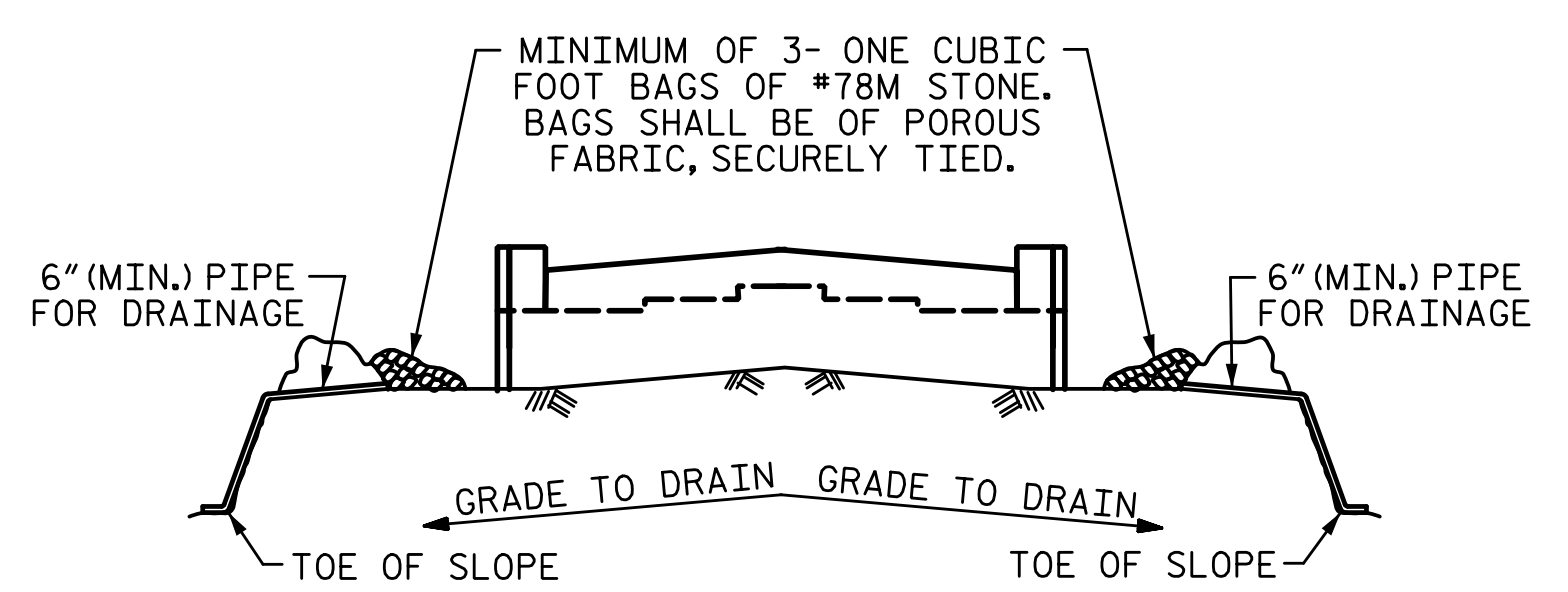


*PILE VERTICAL



*PILE HORIZONTAL OR VERTICAL

PILE SPLICE DETAILS
* POSITION OF PILE DURING WELDING



BAGGED STONE AND PIPE SHALL BE PLACED IMMEDIATELY AFTER COMPLETION OF END BENT EXCAVATION. PIPE MAY BE EITHER CONCRETE, CORRUGATED STEEL, CORRUGATED ALUMINUM ALLOY, OR CORRUGATED PLASTIC. PERFORATED PIPE WILL NOT BE ALLOWED.

BAGGED STONE SHALL REMAIN IN PLACE UNTIL THE ENGINEER DIRECTS THAT IT BE REMOVED. THE CONTRACTOR SHALL REMOVE AND DISPOSE OF SILT ACCUMULATIONS AT BAGGED STONE WHEN SO DIRECTED BY THE ENGINEER. BAGS SHALL BE REMOVED AND REPLACED WHENEVER THE ENGINEER DETERMINES THAT THEY HAVE DETERIORATED AND LOST THEIR EFFECTIVENESS.

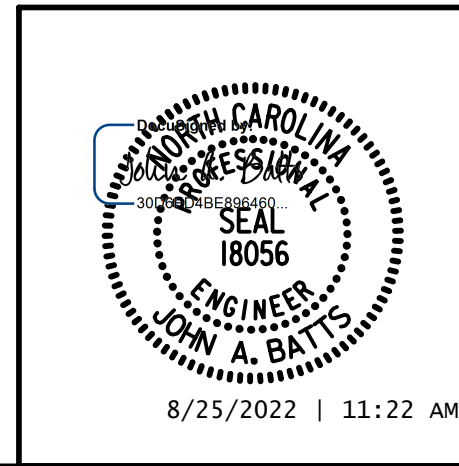
NO SEPARATE PAYMENT WILL BE MADE FOR THIS WORK AND THE ENTIRE COST OF THIS WORK SHALL BE INCLUDED IN THE UNIT CONTRACT PRICE BID FOR THE SEVERAL PAY ITEMS.

TEMPORARY DRAINAGE AT END BENT

PROJECT NO. Y-4810K
CABARRUS COUNTY
STATION: 31+94.08 -L-

SHEET 3 OF 3

STATE OF NORTH CAROLINA
DEPARTMENT OF TRANSPORTATION
RALEIGH
SUBSTRUCTURE
END BENT 2



W WGI
5640 Dillard Drive, Suite 200
Cary, NC 27518
LICENSURE NO. C-4434

DRAWN BY: S.D. COOPER	DATE: 2-19
CHECKED BY: J. A. BATTS	DATE: 2-19
DESIGN ENGINEER OF RECORD: J. A. BATTS	DATE: 2-19

REVISIONS				SHEET NO.	
NO.	BY:	DATE:	NO.	BY:	DATE:
1			3		
2			4		

TOTAL SHEETS: 53

DOCUMENT NOT CONSIDERED FINAL
UNLESS ALL SIGNATURES COMPLETED