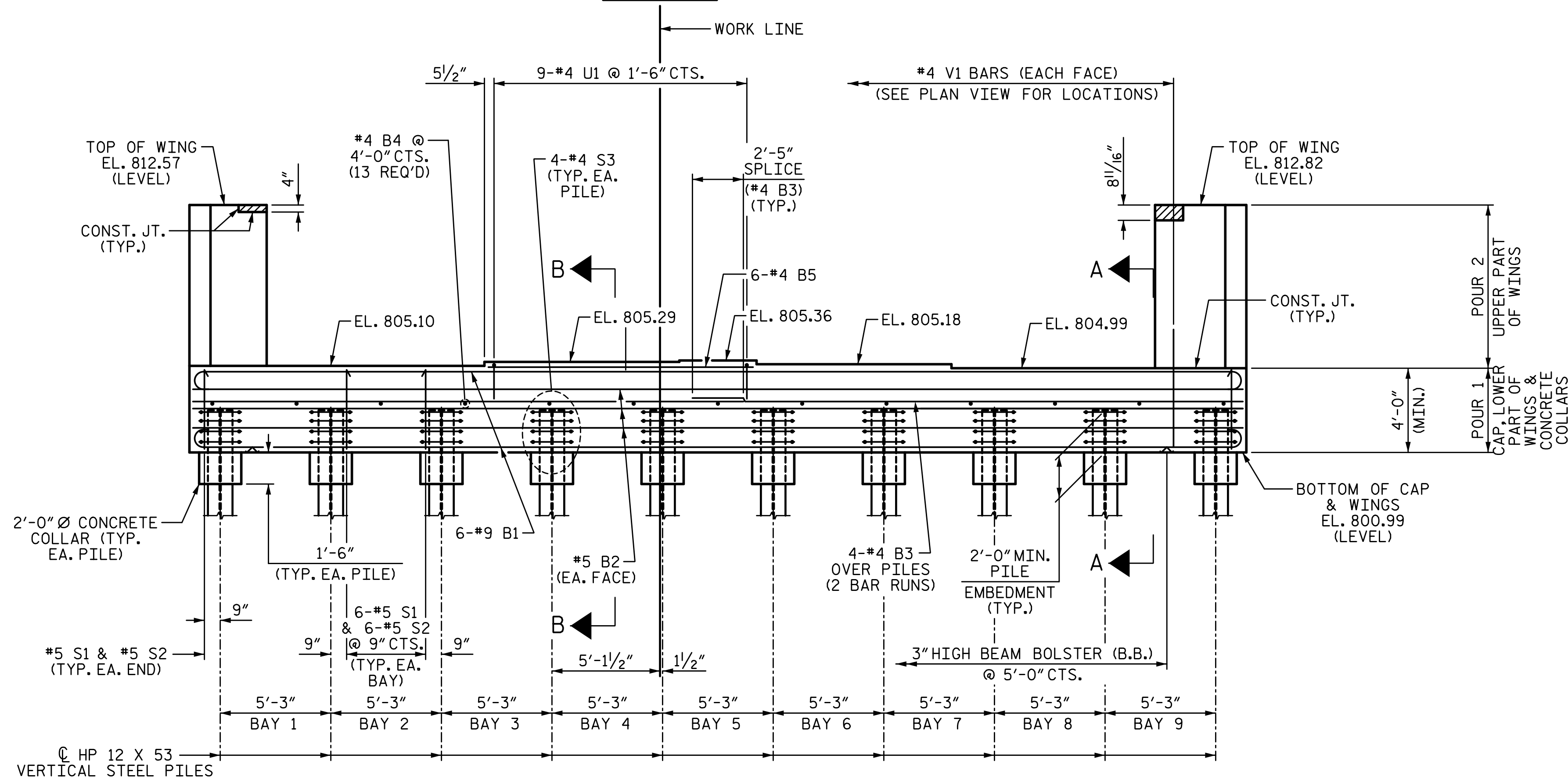
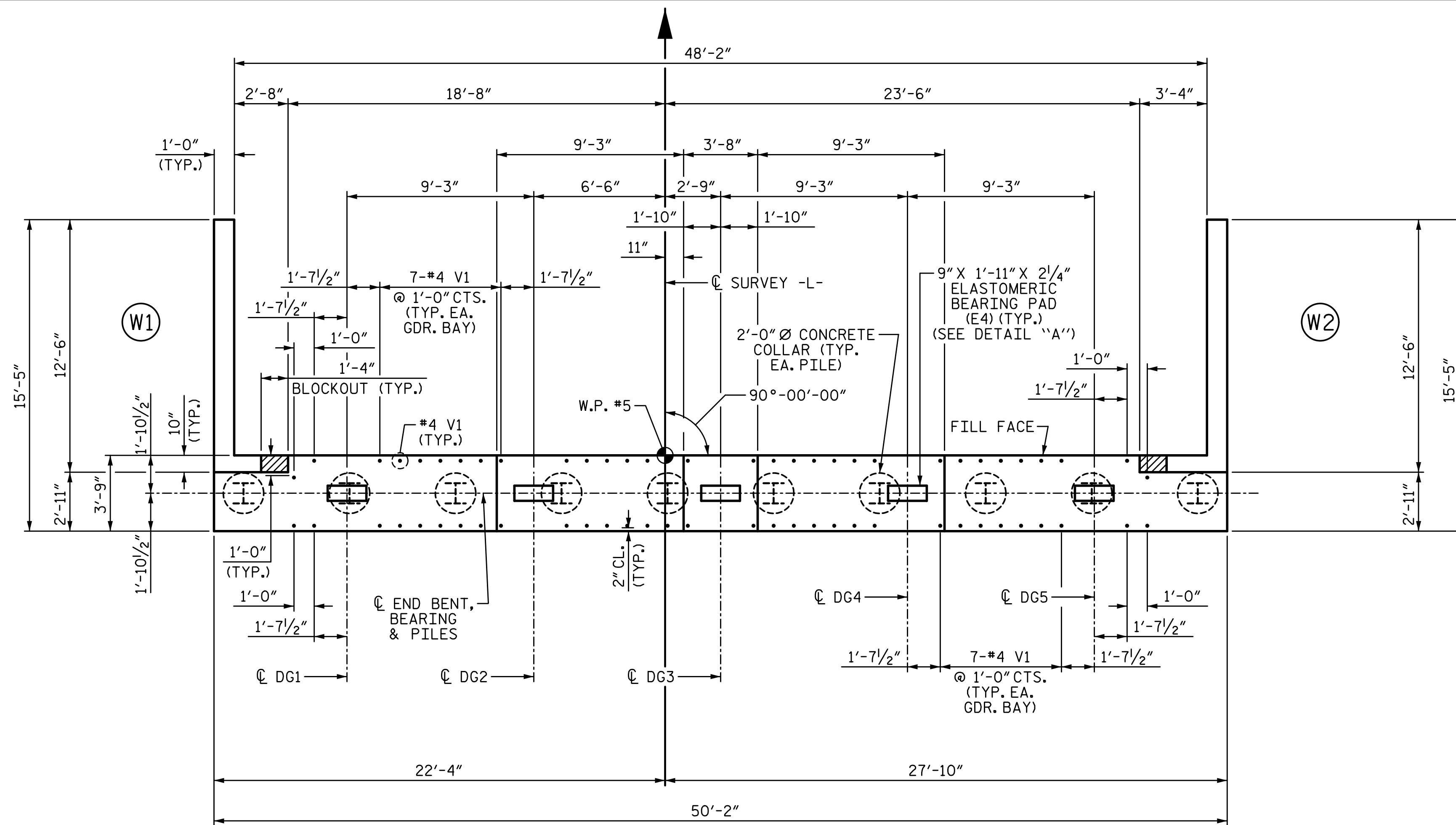


8/25/2022 2:05:12 PM P:\Rail\Projects\2015\Y-4810K (NCDOT Rail Div)\Structures\Drawings\Final\Y4810K_SMU_EB2.dgn



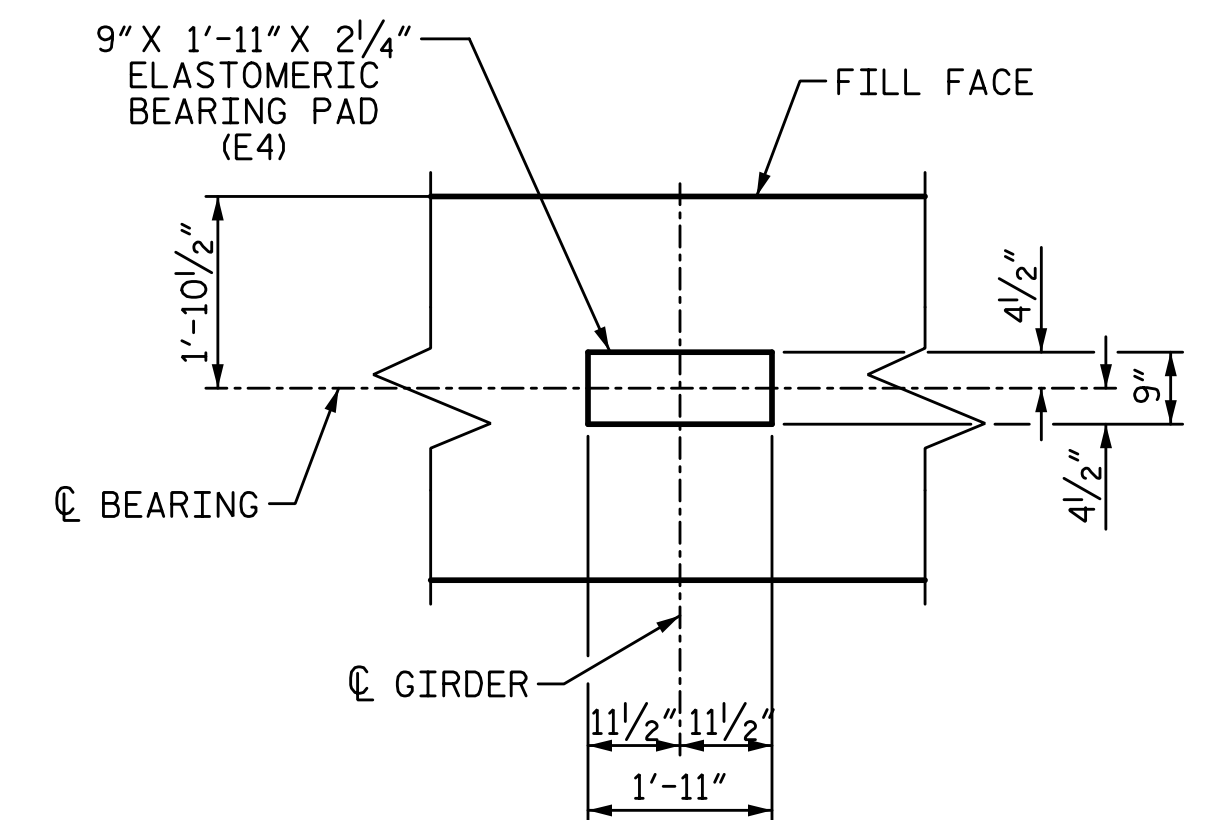
NOTES:

#4 V1 BARS MAY BE SHIFTED SLIGHTLY TO AVOID STIRRUPS IN CAP.

FOR SECTIONS A-A & B-B, SEE SHEET 3 OF 3.

THE TOP SURFACE OF THE END BENT CAP AND WINGS (POUR 1), EXCEPT THE BEARING AREA, SHALL BE RAKED TO A DEPTH OF 1/4".

THE CONCRETE IN THE SHADED AREA OF THE WING SHALL BE POURED AFTER THE JOINT BETWEEN THE DECK AND THE APPROACH SLAB HAS BEEN SAWED AND THE PARAPET AND END POST ARE CAST IF SLIP FORMING IS USED.

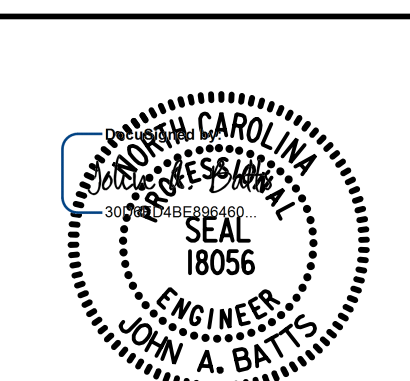


PROJECT NO. Y-4810K
CABARRUS COUNTY
STATION: 31+94.08 -L-

SHEET 1 OF 3

STATE OF NORTH CAROLINA
DEPARTMENT OF TRANSPORTATION
RALEIGH
SUBSTRUCTURE

END BENT 2



8/25/2022 11:22 AM

DRAWN BY: S.D. COOPER DATE: 2-19
CHECKED BY: J. A. BATTIS DATE: 2-19
DESIGN ENGINEER OF RECORD: J. A. BATTIS DATE: 2-19

LICENSURE NO. C-4434

**DOCUMENT NOT CONSIDERED FINAL
UNLESS ALL SIGNATURES COMPLETED**

REVISIONS						SHEET NO.
NO.	BY:	DATE:	NO.	BY:	DATE:	S-46
1			3			TOTAL SHEETS
2			4			53