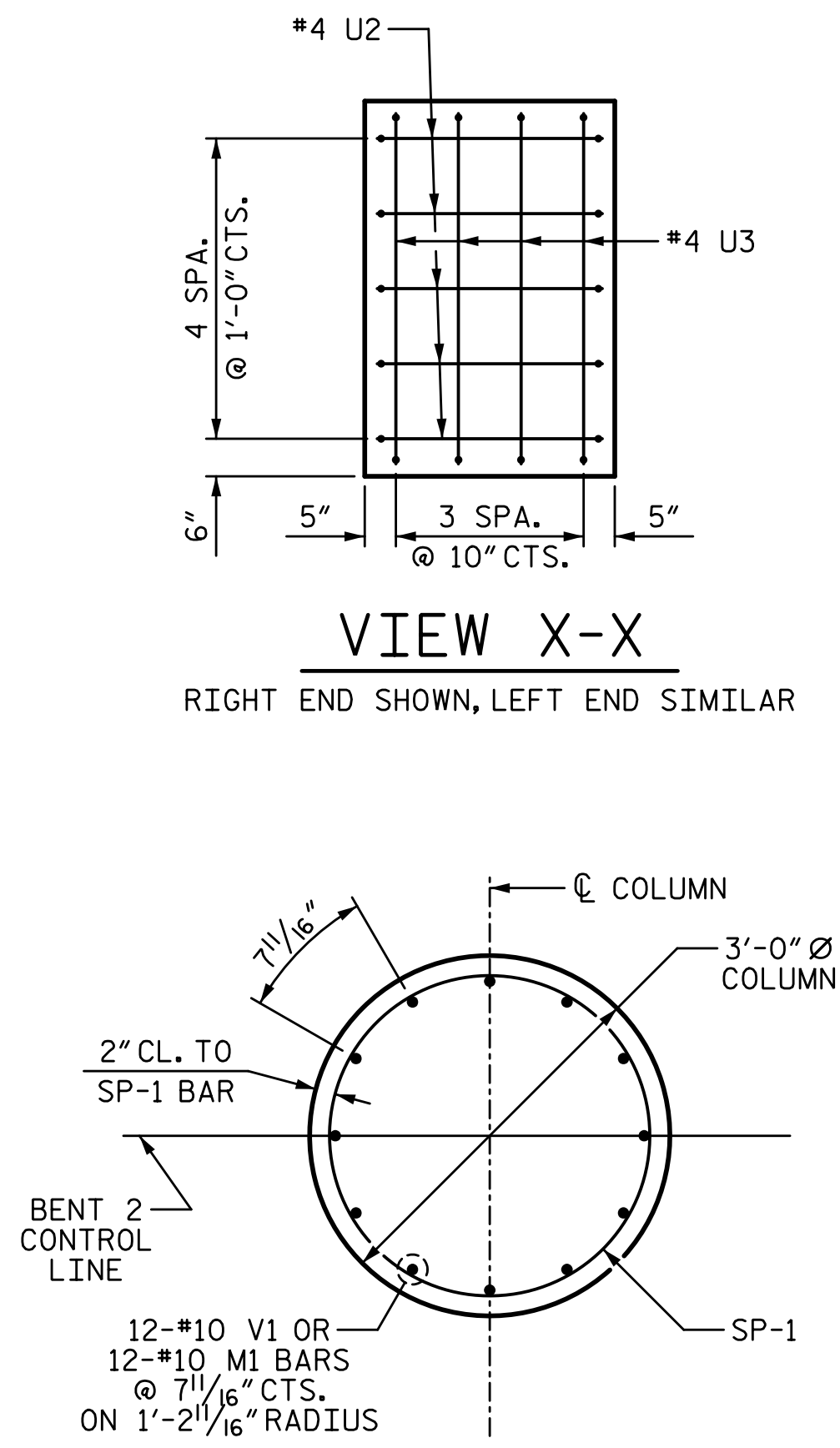
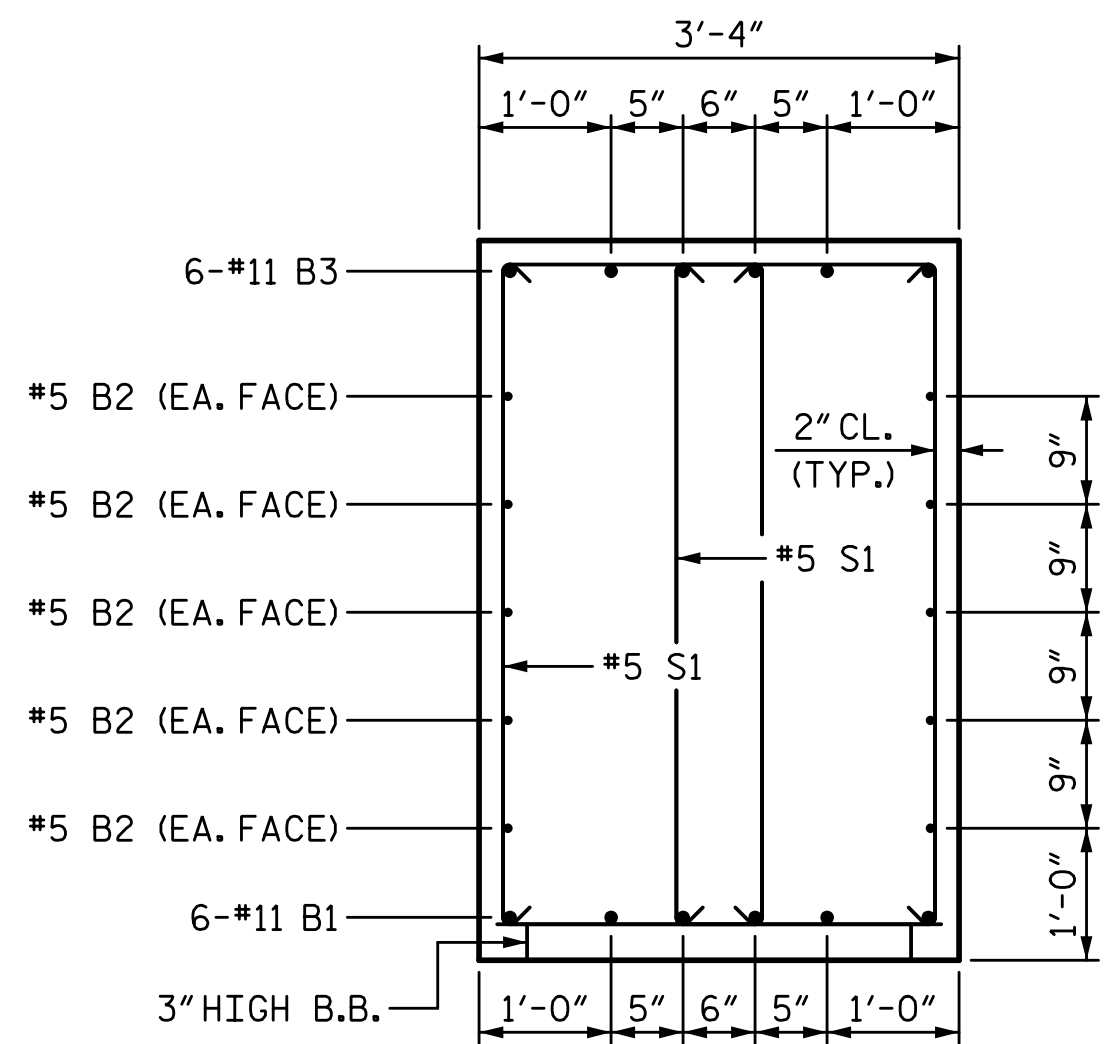


8/25/2022 2:05:10 PM P:\Rail\Projects\2015\Y-4810K (NCDOT RailDiv)\Structures\Drawings\Final\Y4810K_SMU_B2.dgn

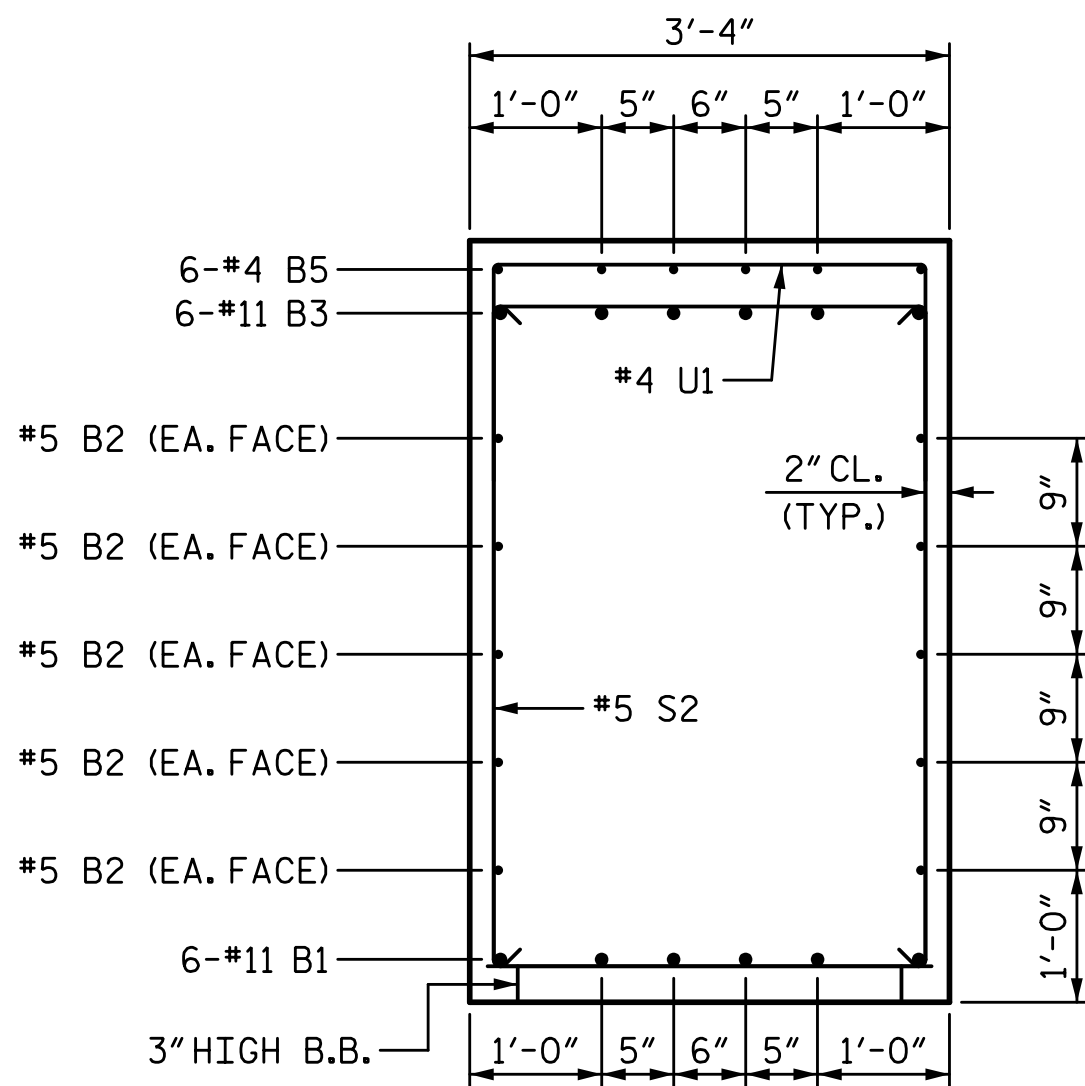


VIEW X-X
RIGHT END SHOWN, LEFT END SIMILAR

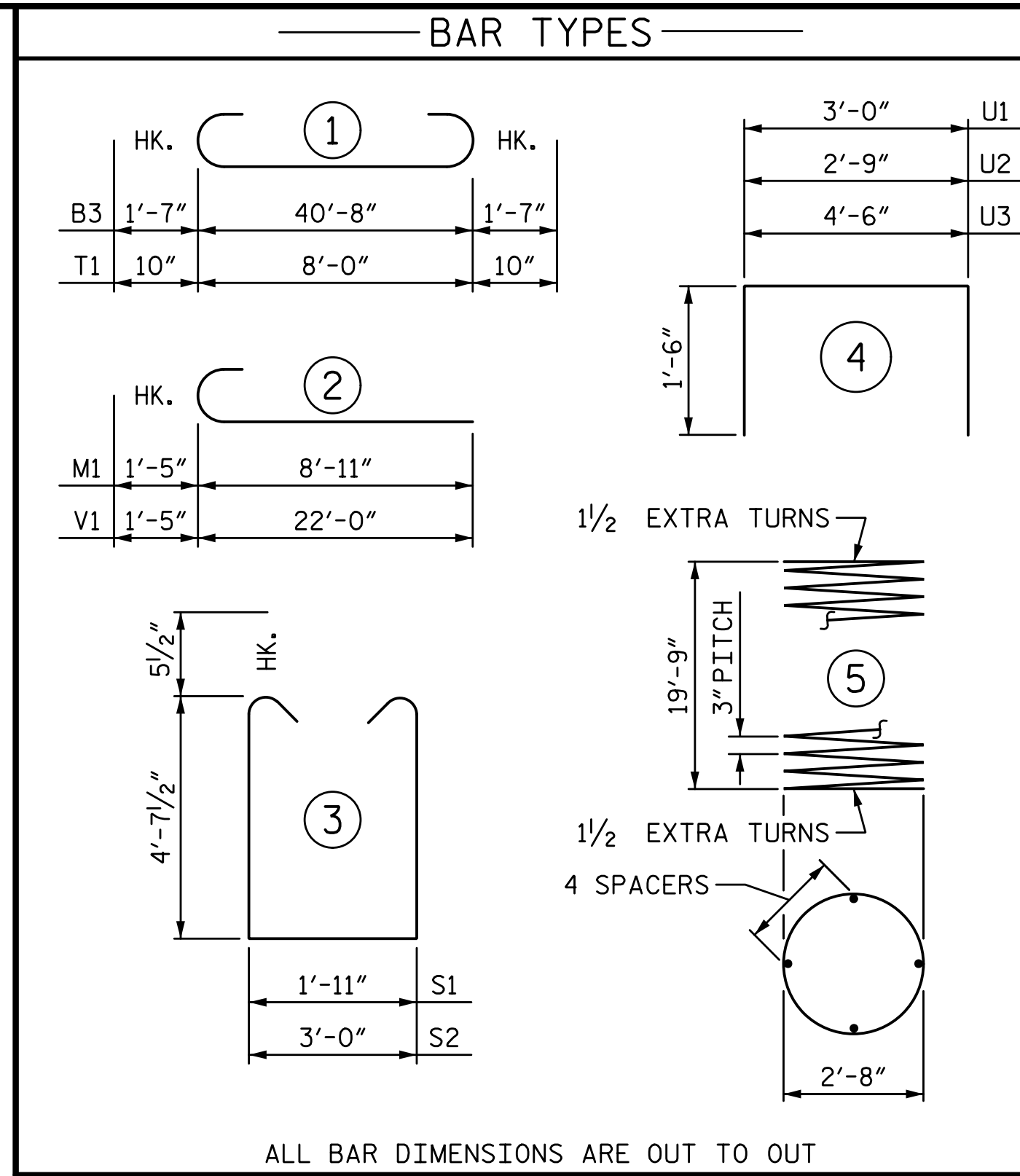
PLAN OF COLUMN
DIMENSIONS AND REINFORCING STEEL ARE TYPICAL FOR EACH COLUMN



SECTION A-A



SECTION B-B



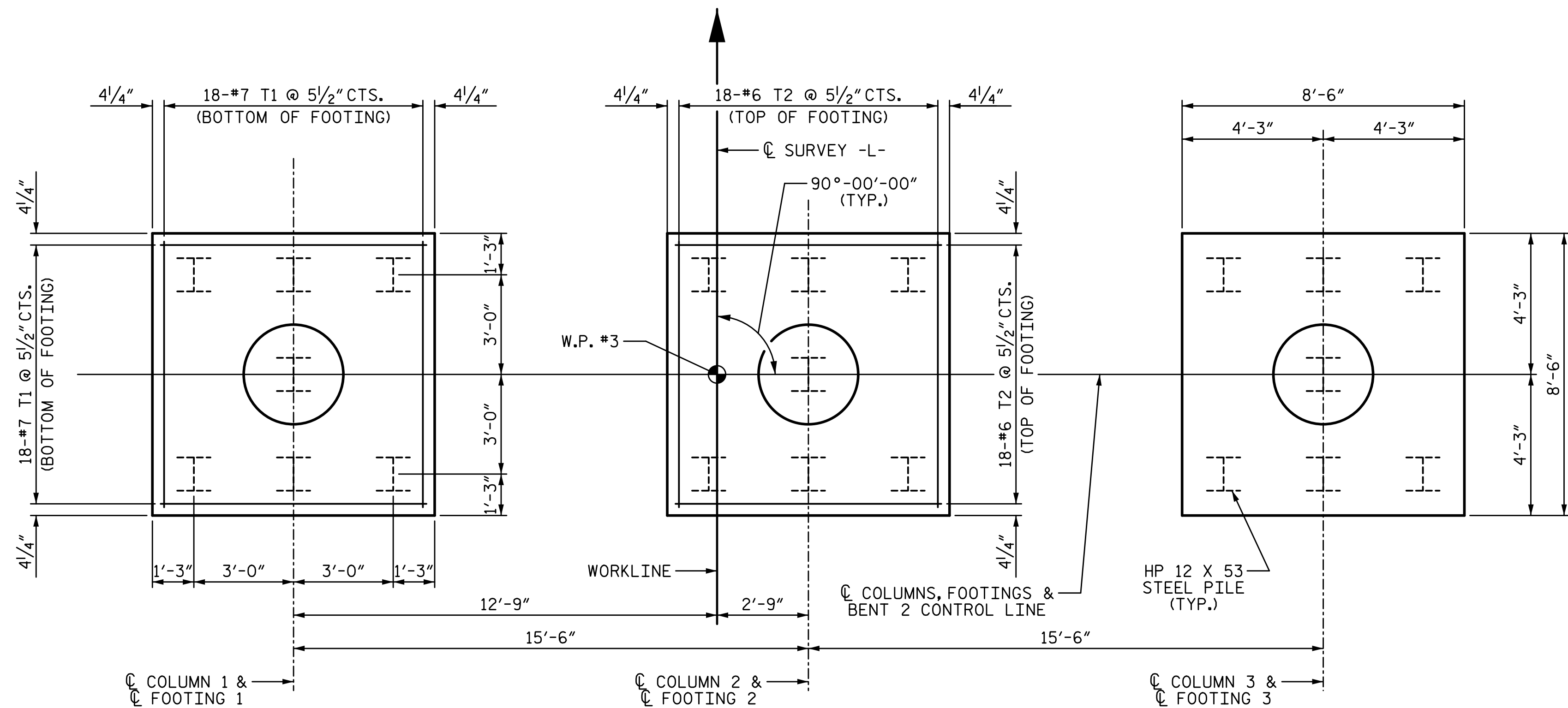
ALL BAR DIMENSIONS ARE OUT TO OUT

BILL OF MATERIAL

BENT 2

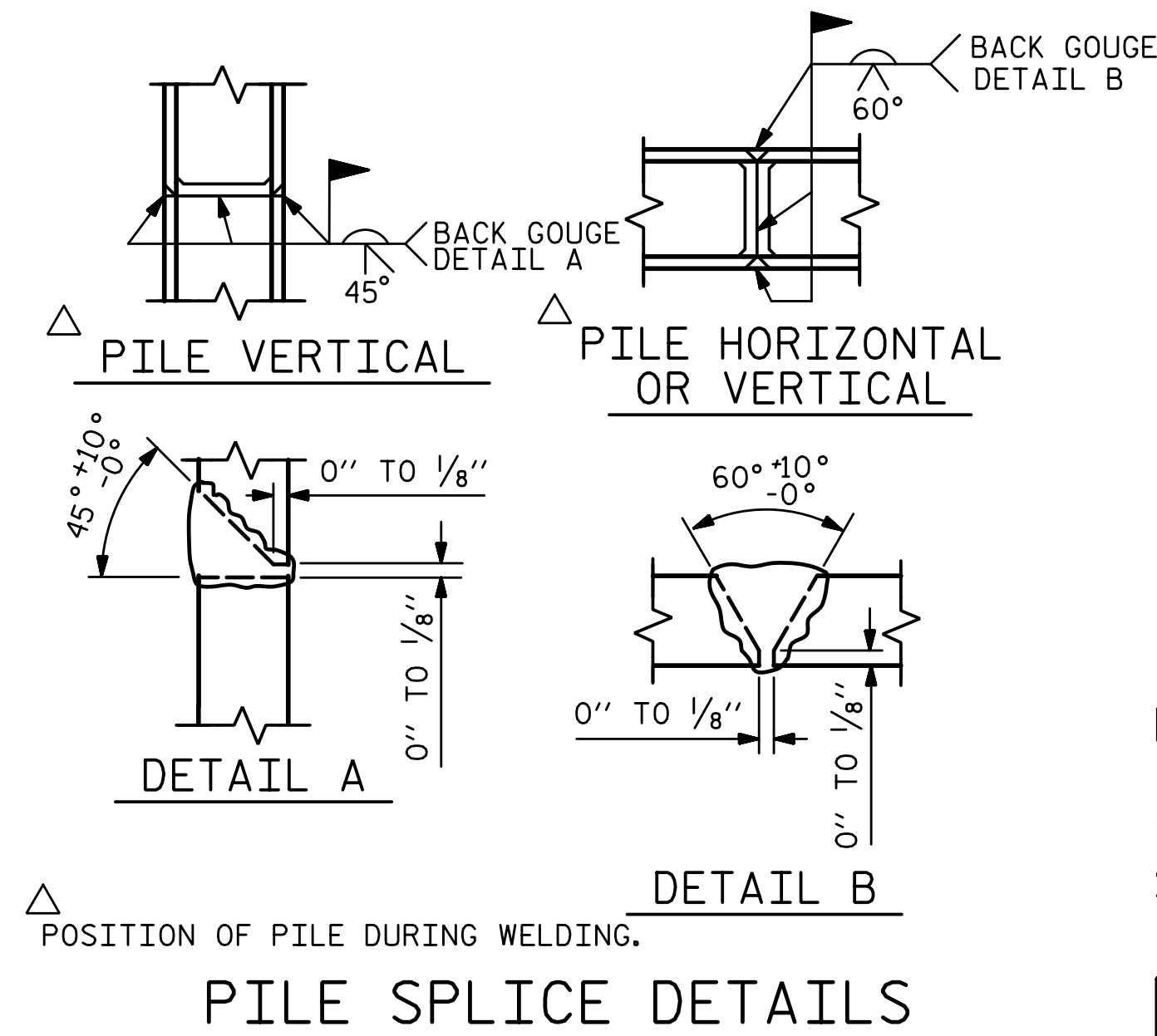
BAR NO.	NO.	SIZE	TYPE	LENGTH	WEIGHT
B1	6	#11	STR	40'-10"	1302
B2	10	#5	STR	40'-10"	426
B3	6	#11	1	43'-10"	1397
B4	6	#4	STR	9'-1"	36
B5	6	#4	STR	12'-7"	50
M1	36	#10	2	10'-4"	1601
S1	64	#5	3	12'-1"	807
S2	16	#5	3	13'-2"	220
T1	108	#7	1	9'-8"	2134
T2	108	#6	STR	8'-0"	1298
U1	46	#4	4	6'-0"	184
U2	10	#4	4	5'-9"	38
U3	8	#4	4	7'-6"	40
V1	36	#10	2	23'-5"	3627
SP-1	3	*	5	676'-7"	1356
REINFORCING STEEL					13160 LB
SPIRAL COL. REINF. STEEL					1356 LB
CLASS "A" CONCRETE BREAKDOWN					
POUR 1 (FOOTINGS)					32.2 CY
POUR 2 (COLUMNS)					15.4 CY
POUR 3 (CAP)					26.3 CY
TOTAL					73.9 CY
HP 12 X 53 STEEL PILES					
NO. 21					1000 LF
STEEL PILE POINTS					NO. 21
PREDRILLING FOR PILES					120 LF
PILE DRIVING EQUIPMENT SETUP					
HP 12 X 53 STEEL PILES					21 EA

* THE SP-1 SPIRAL REINFORCING STEEL SHALL BE W20 OR D-20 COLD DRAWN WIRE OR #4 PLAIN OR DEFORMED BAR



PLAN OF FOOTINGS

PILE PLACEMENT, DIMENSIONS AND REINFORCING STEEL ARE TYPICAL FOR EACH FOOTING



PILE SPLICE DETAILS

PROJECT NO. Y-4810K
CABARRUS COUNTY
STATION: 31+94.08 -L-

SHEET 2 OF 2

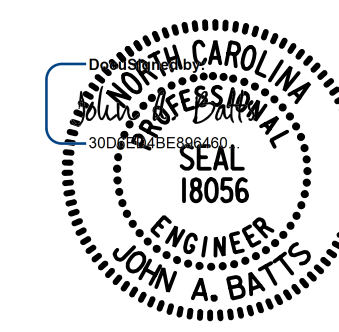
STATE OF NORTH CAROLINA
DEPARTMENT OF TRANSPORTATION
RALEIGH
SUBSTRUCTURE

BENT 2



5640 Dillard Drive, Suite 200
Cary, NC 27518

LICENSURE NO. C-4434



8/25/2022 | 11:22 AM

DRAWN BY: T. BANKOVICH	DATE: 2-19
CHECKED BY: J. A. BATTS	DATE: 2-19
DESIGN ENGINEER OF RECORD: J. A. BATTS	DATE: 2-19

REVISIONS				SHEET NO.	
NO.	BY:	DATE:	NO.	BY:	DATE:
1			3		
2			4		

**DOCUMENT NOT CONSIDERED FINAL
UNLESS ALL SIGNATURES COMPLETED**

TOTAL SHEETS 53