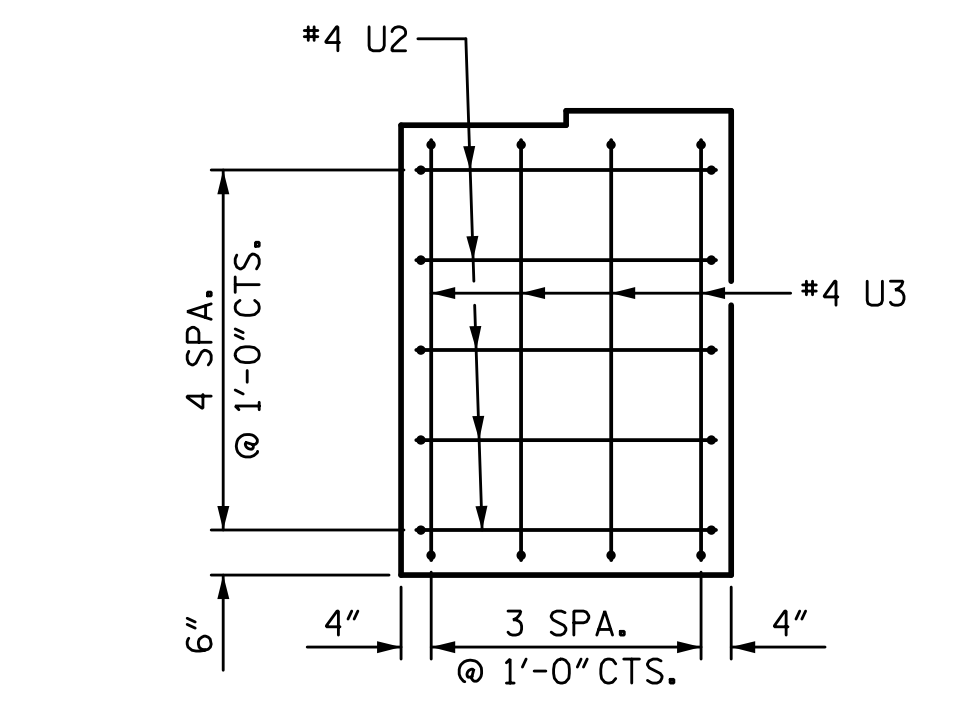
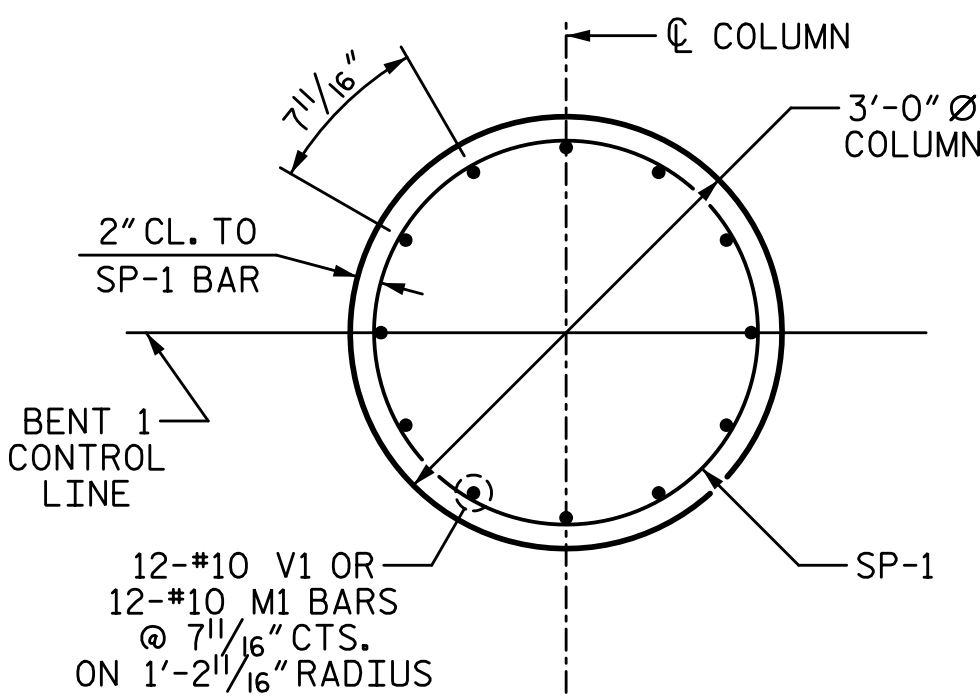


8/25/2022 2:05:09 PM P:\RailDiv\Projects\2015\Y-4810K (NCDOT RailDiv)\Structures\Drawings\Final\Y4810K\_SMU\_B1.dgn



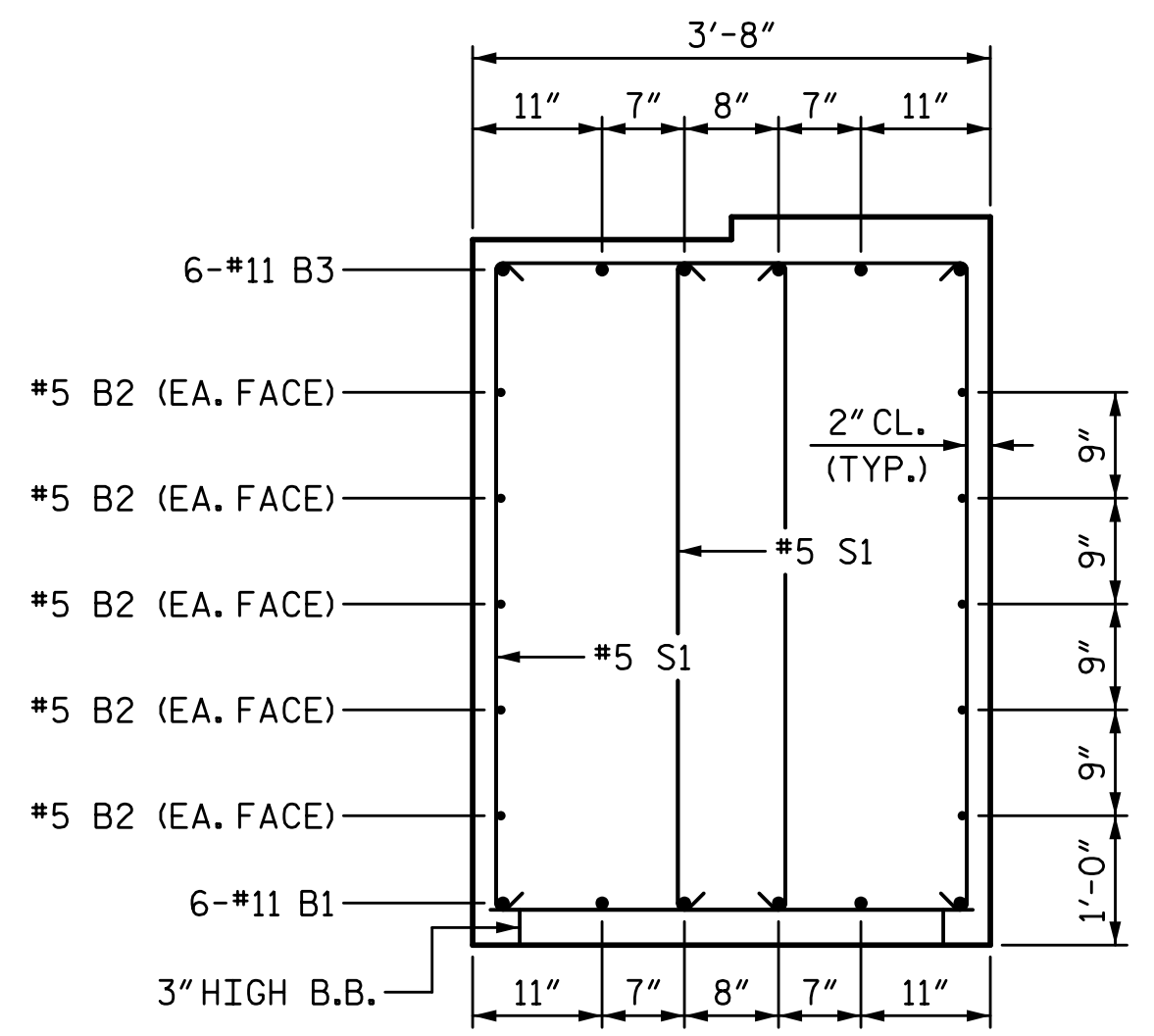
**VIEW X-X**

RIGHT END SHOWN, LEFT END SIMILAR

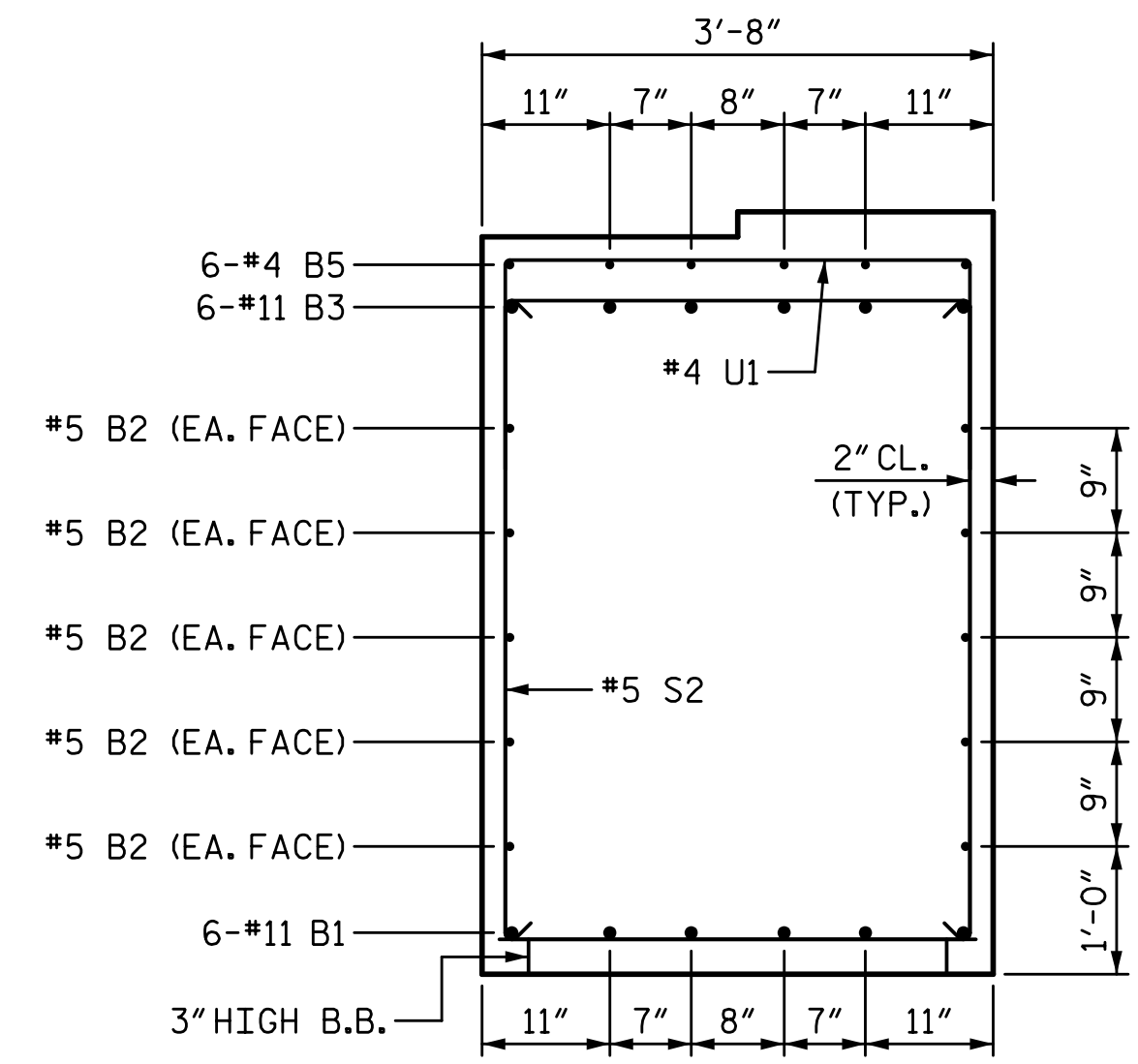


**PLAN OF COLUMN**

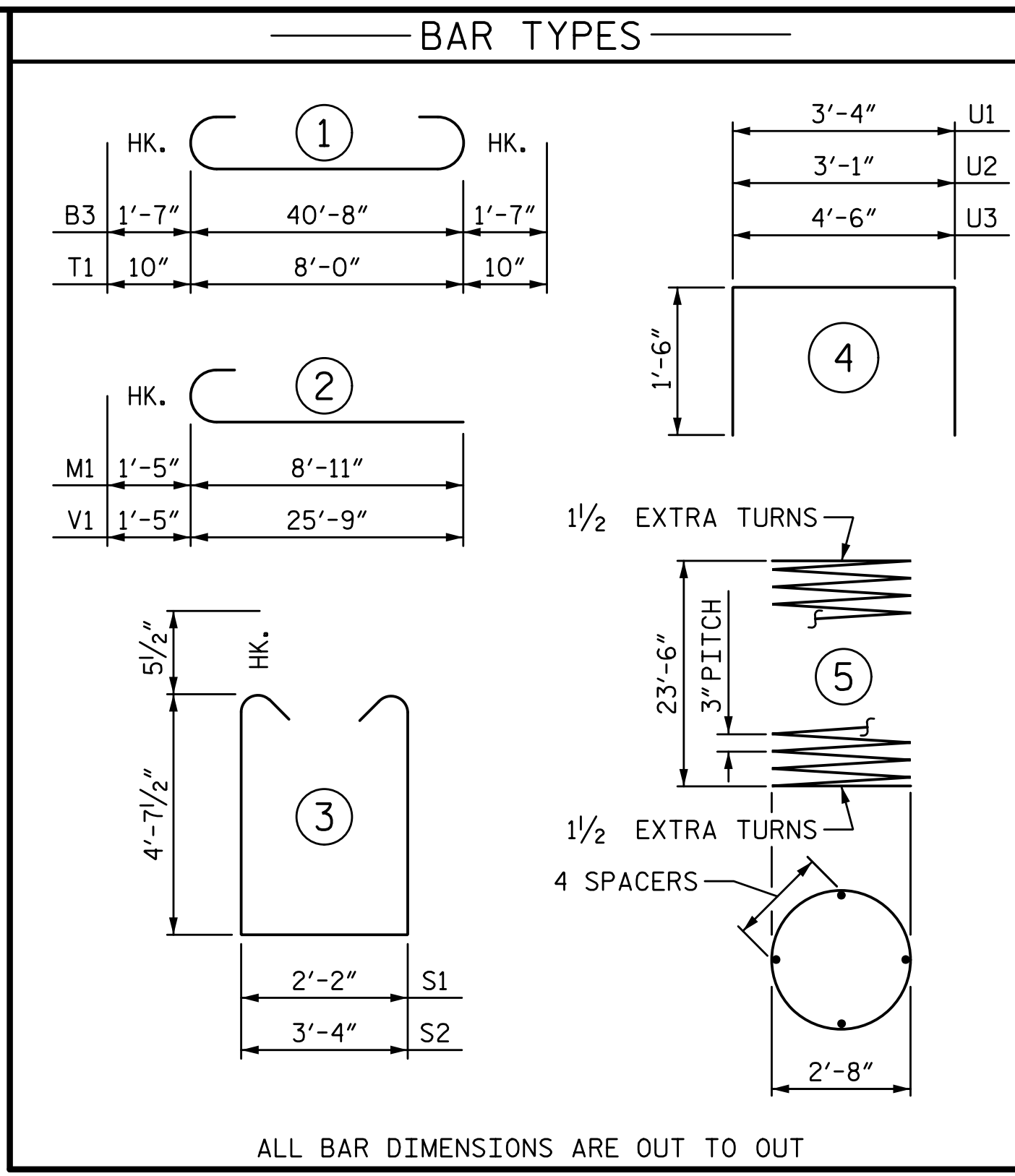
DIMENSIONS AND REINFORCING STEEL ARE TYPICAL FOR EACH COLUMN



**SECTION A-A**



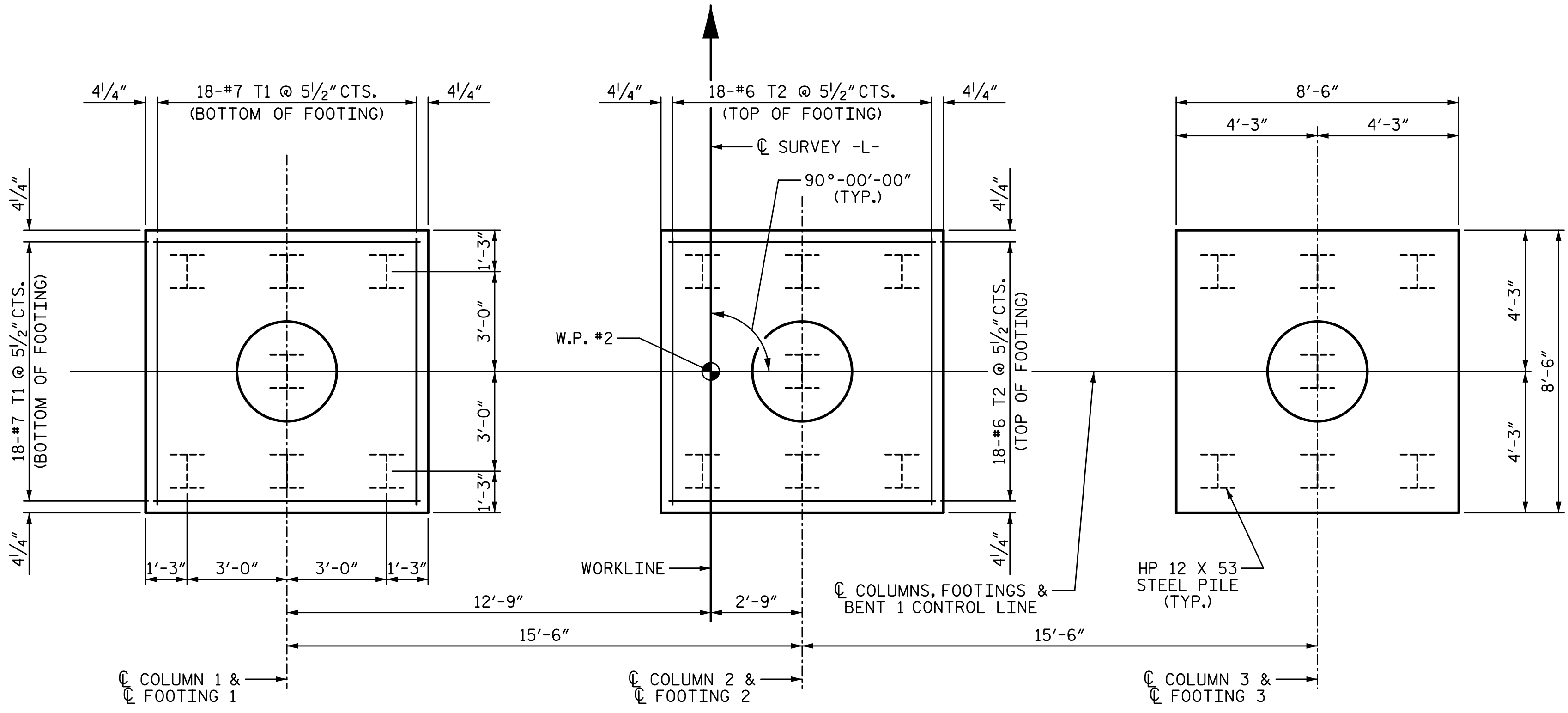
**SECTION B-B**



ALL BAR DIMENSIONS ARE OUT TO OUT

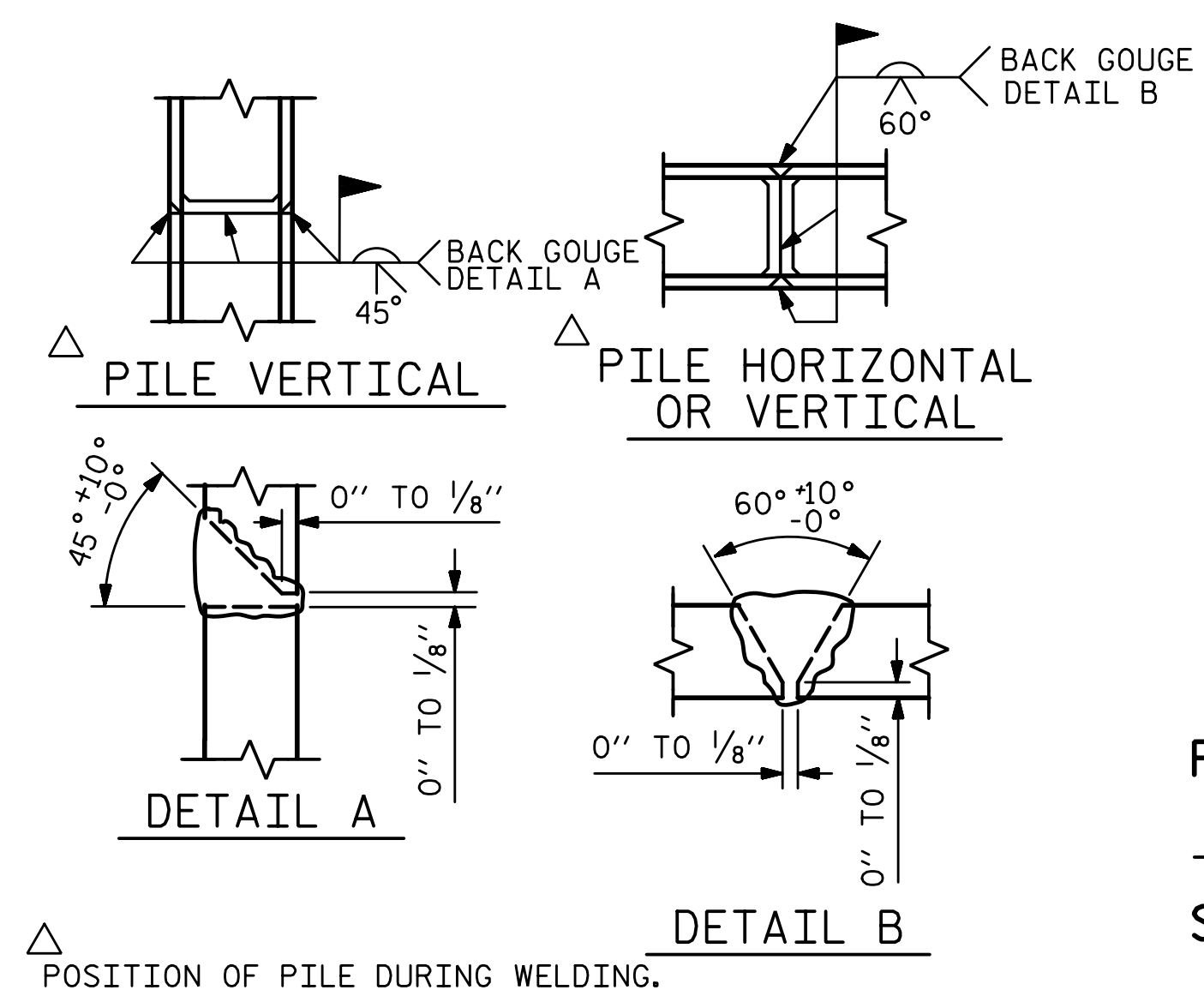
BILL OF MATERIAL					
BENT 1					
BAR	NO.	SIZE	TYPE	LENGTH	WEIGHT
B1	6	#11	STR	40'-10"	1302
B2	10	#5	STR	40'-10"	426
B3	6	#11	1	43'-10"	1397
B4	6	#4	STR	9'-1"	36
B5	6	#4	STR	12'-7"	50
M1	36	#10	2	10'-4"	1601
S1	64	#5	3	12'-4"	823
S2	16	#5	3	13'-6"	225
T1	108	#7	1	9'-8"	2134
T2	108	#6	STR	8'-0"	1298
U1	46	#4	4	6'-4"	195
U2	10	#4	4	6'-1"	41
U3	8	#4	4	7'-6"	40
V1	36	#10	2	27'-2"	4208
SP-1	3	*	5	800'-4"	1604
REINFORCING STEEL					13776 LB
SPIRAL COL. REINF. STEEL					1604 LB
CLASS A CONCRETE BREAKDOWN					
POUR 1 (FOOTINGS)					32.2 CY
POUR 2 (COLUMNS)					18.3 CY
POUR 3 (CAP)					29.2 CY
TOTAL					79.7 CY
HP 12 X 53 STEEL PILES					
NO. 21					1680 LF
PILE DRIVING EQUIPMENT SETUP					
HP 12 X 53 STEEL PILES					21 EA

\* THE SP-1 SPIRAL REINFORCING STEEL SHALL BE W20 OR D-20 COLD DRAWN WIRE OR #4 PLAIN OR DEFORMED BAR



**PLAN OF FOOTINGS**

PILE PLACEMENT, DIMENSIONS AND REINFORCING STEEL ARE TYPICAL FOR EACH FOOTING



**PILE SPLICE DETAILS**

PROJECT NO. Y-4810K  
CABARRUS COUNTY  
 STATION: 31+94.08 -L-

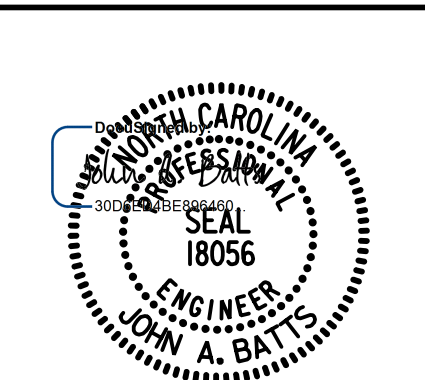
SHEET 2 OF 2

STATE OF NORTH CAROLINA  
 DEPARTMENT OF TRANSPORTATION  
 RALEIGH  
 SUBSTRUCTURE

**BENT 1**

DRAWN BY: T. BANKOVICH DATE: 2-19  
 CHECKED BY: J. A. BATTS DATE: 2-19  
 DESIGN ENGINEER OF RECORD: J. A. BATTS DATE: 2-19

**W WGI**  
 5640 Dillard Drive, Suite 200  
 Cary, NC 27518



LICENSURE NO. C-4434

8/25/2022 | 11:22 AM EDT

DOCUMENT NOT CONSIDERED FINAL UNLESS ALL SIGNATURES COMPLETED

REVISIONS					
NO.	BY:	DATE:	NO.	BY:	DATE:
1			3		
2			4		

SHEET NO. S-41  
 TOTAL SHEETS 53