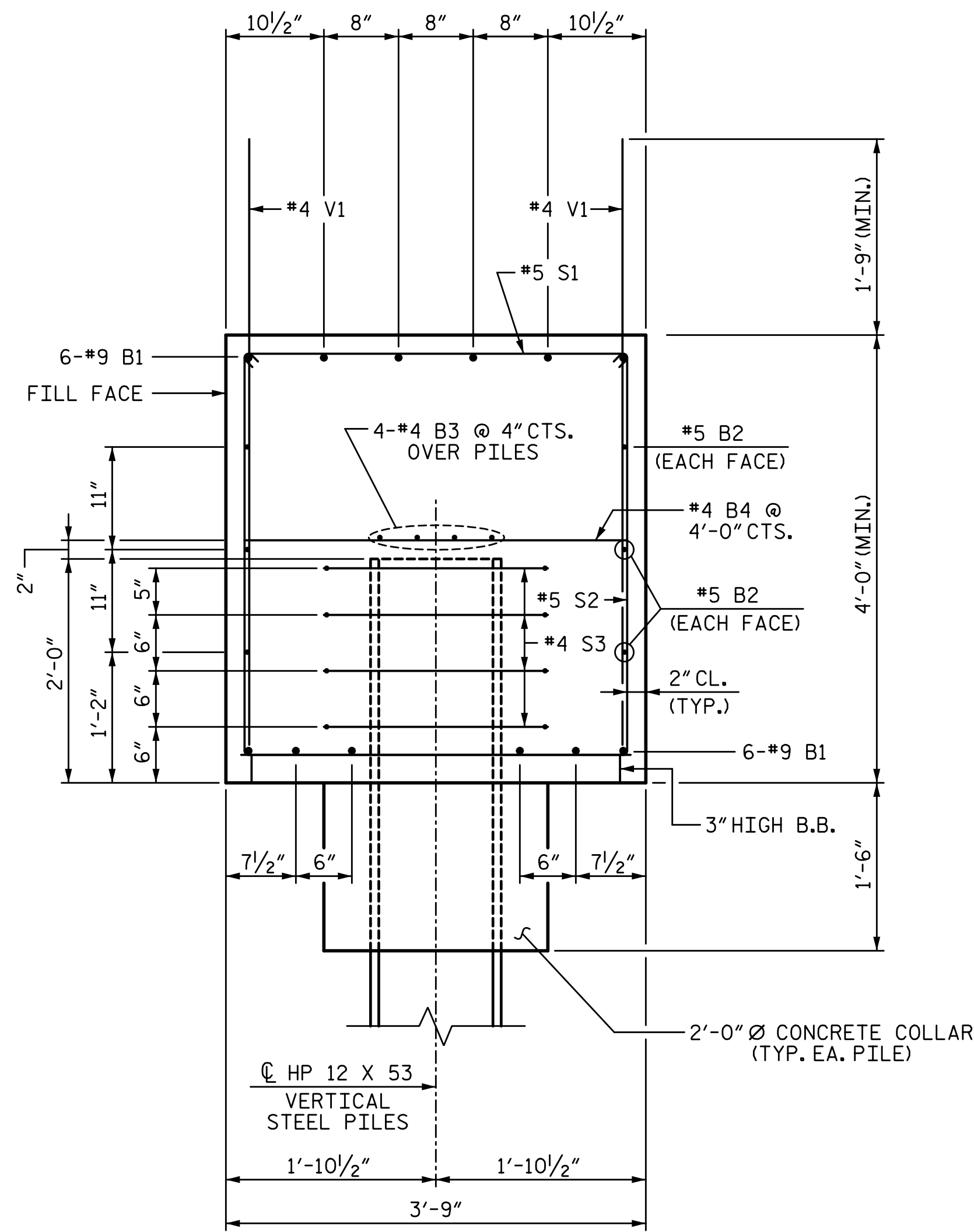
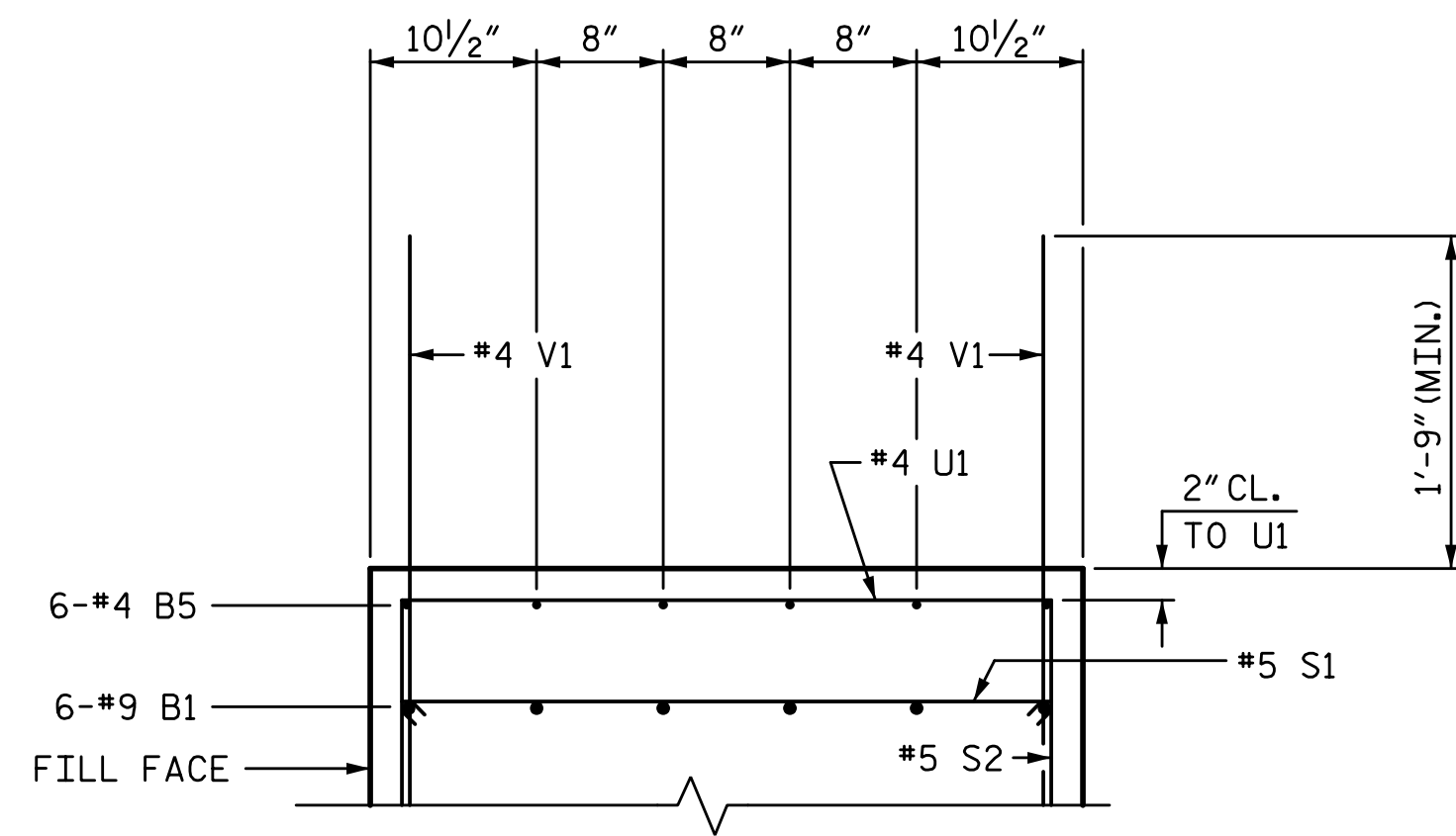


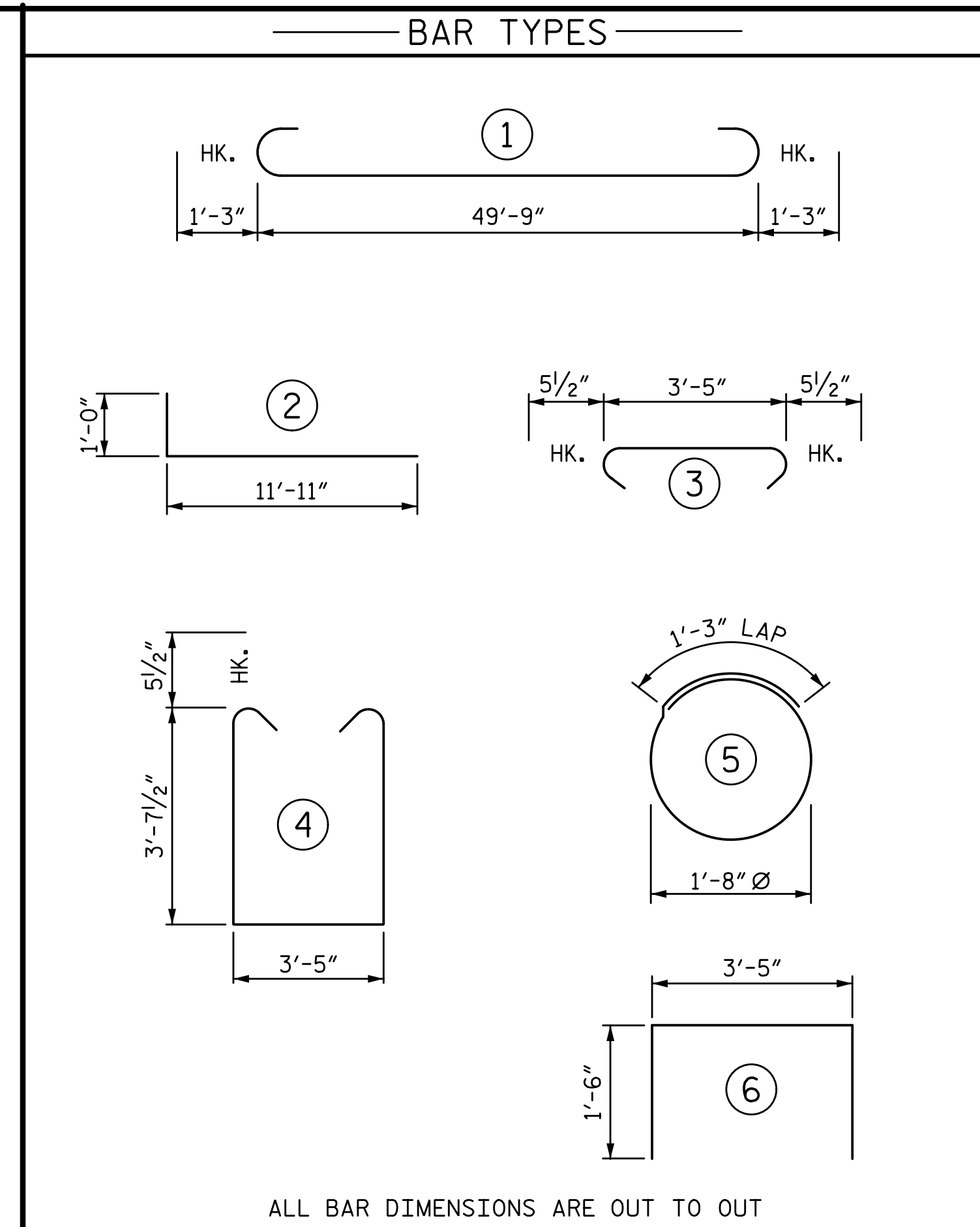
8/25/2022 2:05:08 PM P:\Rail\Projects\2015\Y-4810K (NCDOT RailDiv)\Structures\Drawings\Final\Y4810K\_SMU\_EBI.dgn



SECTION A-A

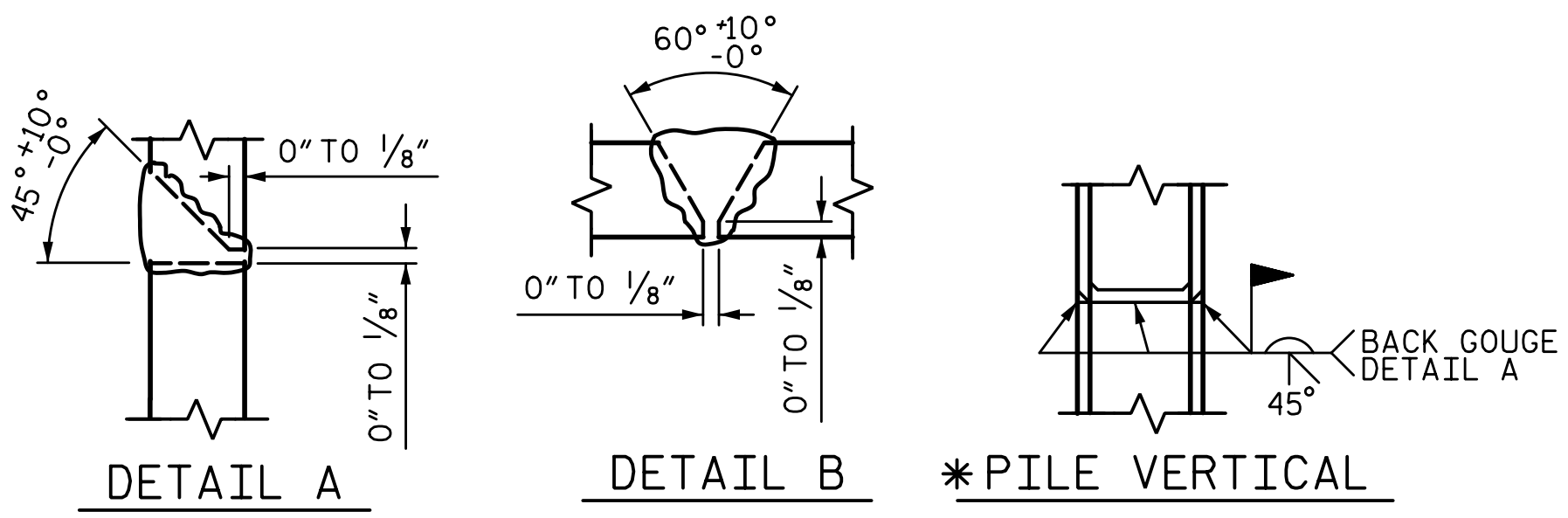


PARTIAL SECTION B-B



ALL BAR DIMENSIONS ARE OUT TO OUT

BILL OF MATERIAL					
END BENT 1					
BAR	NO.	SIZE	TYPE	LENGTH	WEIGHT
B1	12	#9		52'-3"	2132
B2	6	#5	STR	49'-9"	311
B3	8	#4	STR	26'-2"	140
B4	13	#4	STR	3'-5"	30
B5	6	#4	STR	12'-6"	50
H1	92	#6	2	12'-11"	1785
K1	30	#4	STR	3'-4"	67
K2	30	#4	STR	4'-0"	80
S1	56	#5	3	4'-4"	253
S2	56	#5	4	11'-7"	677
S3	40	#4	5	6'-6"	174
U1	9	#4	6	6'-5"	39
V1	64	#4	STR	6'-0"	257
V2	36	#5	STR	11'-2"	419
V3	38	#5	STR	11'-5"	452
TOTAL REINFORCING STEEL				6866	LB
CLASS A CONCRETE					
POUR 1					
(CAP, COLLARS, & LOWER WINGS)				34.1	CY
POUR 2					
(UPPER WINGS)				8.3	CY
TOTAL CLASS A CONCRETE				42.4	CY
HP 12 X 53 STEEL PILES					
NO. 10				900	LF
PILE DRIVING EQUIPMENT SETUP					
HP 12 X 53 STEEL PILES				10	EA
PILE REDRIVES				10	EA

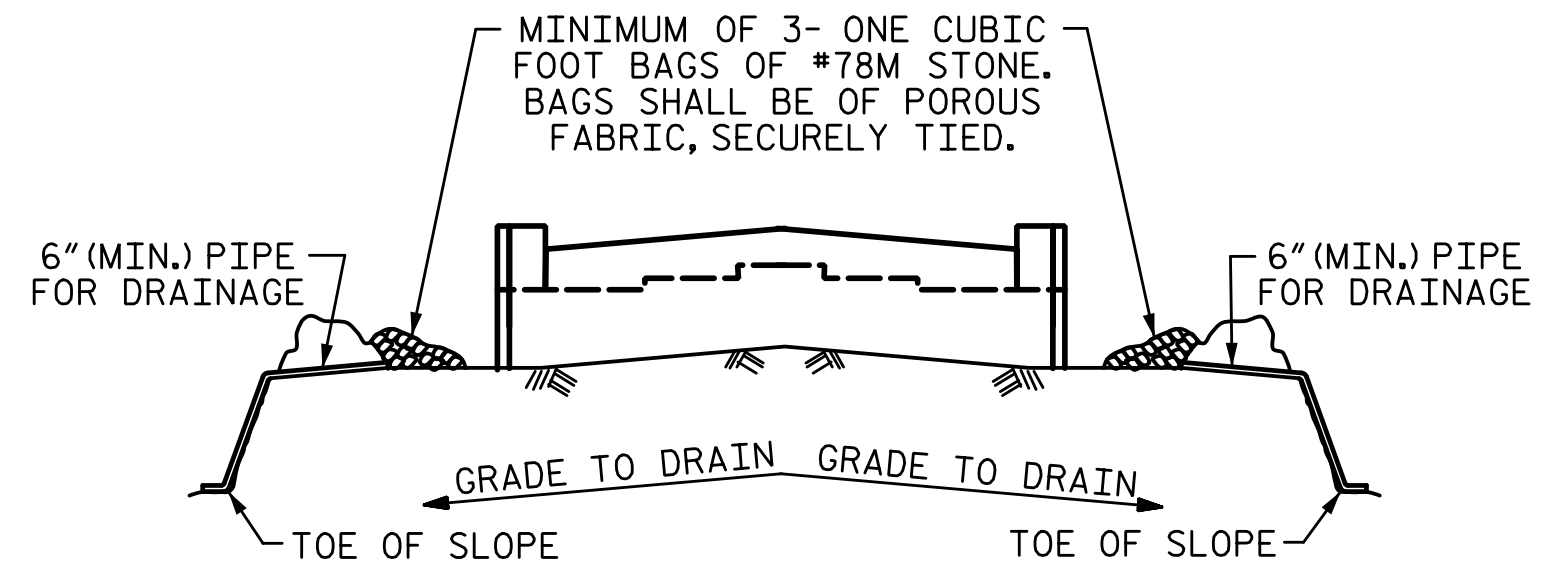


\*PILE VERTICAL

\*PILE HORIZONTAL OR VERTICAL

PILE SPLICE DETAILS

\* POSITION OF PILE DURING WELDING



BAGGED STONE AND PIPE SHALL BE PLACED IMMEDIATELY AFTER COMPLETION OF END BENT EXCAVATION. PIPE MAY BE EITHER CONCRETE, CORRUGATED STEEL, CORRUGATED ALUMINUM ALLOY, OR CORRUGATED PLASTIC. PERFORATED PIPE WILL NOT BE ALLOWED.

BAGGED STONE SHALL REMAIN IN PLACE UNTIL THE ENGINEER DIRECTS THAT IT BE REMOVED. THE CONTRACTOR SHALL REMOVE AND DISPOSE OF SILT ACCUMULATIONS AT BAGGED STONE WHEN SO DIRECTED BY THE ENGINEER. BAGS SHALL BE REMOVED AND REPLACED WHENEVER THE ENGINEER DETERMINES THAT THEY HAVE DETERIORATED AND LOST THEIR EFFECTIVENESS.

NO SEPARATE PAYMENT WILL BE MADE FOR THIS WORK AND THE ENTIRE COST OF THIS WORK SHALL BE INCLUDED IN THE UNIT CONTRACT PRICE BID FOR THE SEVERAL PAY ITEMS.

TEMPORARY DRAINAGE AT END BENT

PROJECT NO. Y-4810K

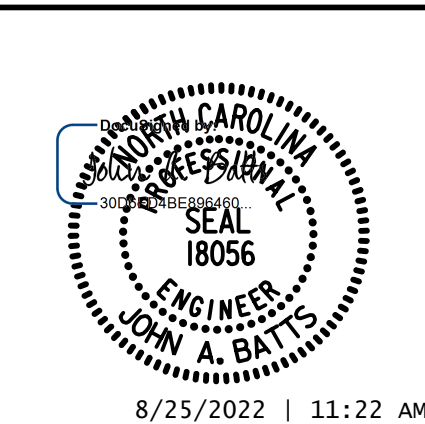
CABARRUS COUNTY

STATION: 31+94.08 -L-

SHEET 3 OF 3

STATE OF NORTH CAROLINA  
DEPARTMENT OF TRANSPORTATION  
RALEIGH  
SUBSTRUCTURE

END BENT 1



REVISIONS					
NO.	BY:	DATE:	NO.	BY:	DATE:
1			3		
2			4		

DRAWN BY: <u>S.D. COOPER</u>	DATE: <u>2-19</u>
CHECKED BY: <u>J. A. BATTS</u>	DATE: <u>2-19</u>
DESIGN ENGINEER OF RECORD: <u>J. A. BATTS</u>	DATE: <u>2-19</u>

DOCUMENT NOT CONSIDERED FINAL UNLESS ALL SIGNATURES COMPLETED

SHEET NO. S-39  
TOTAL SHEETS 53