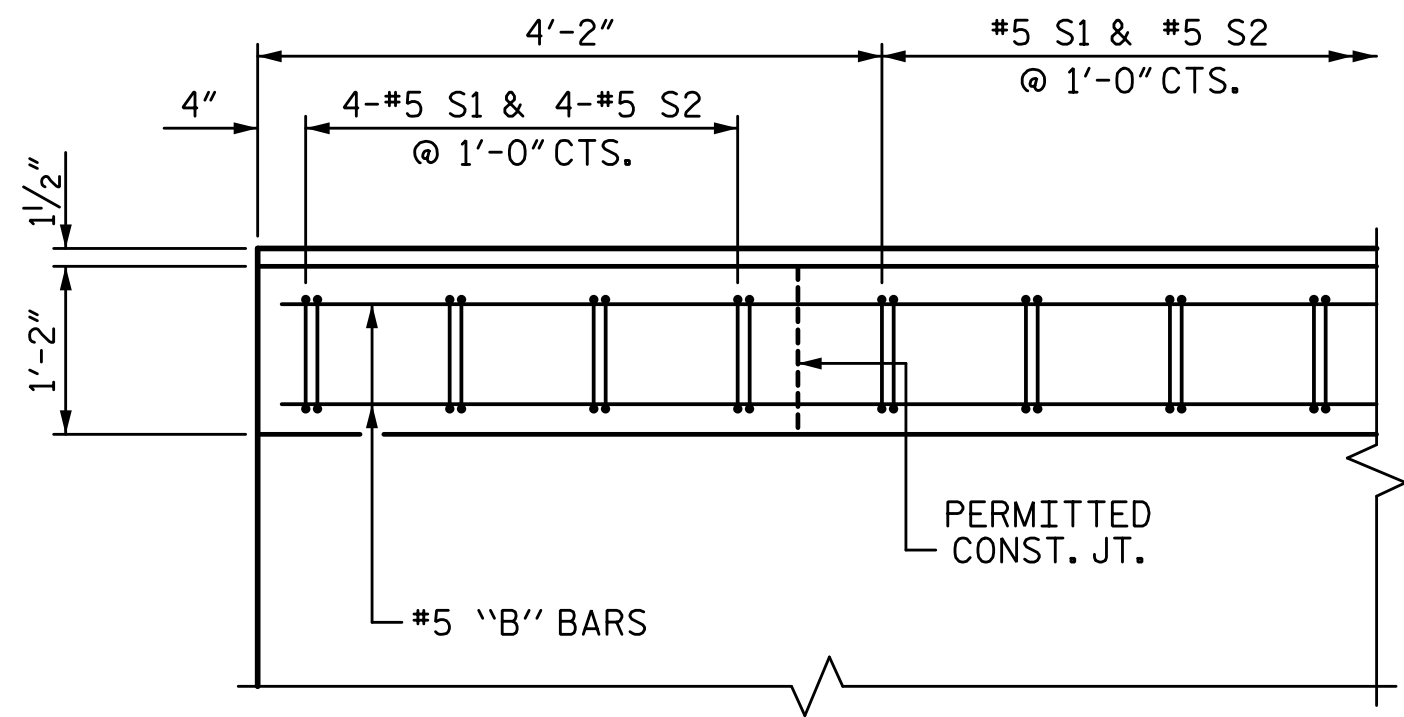
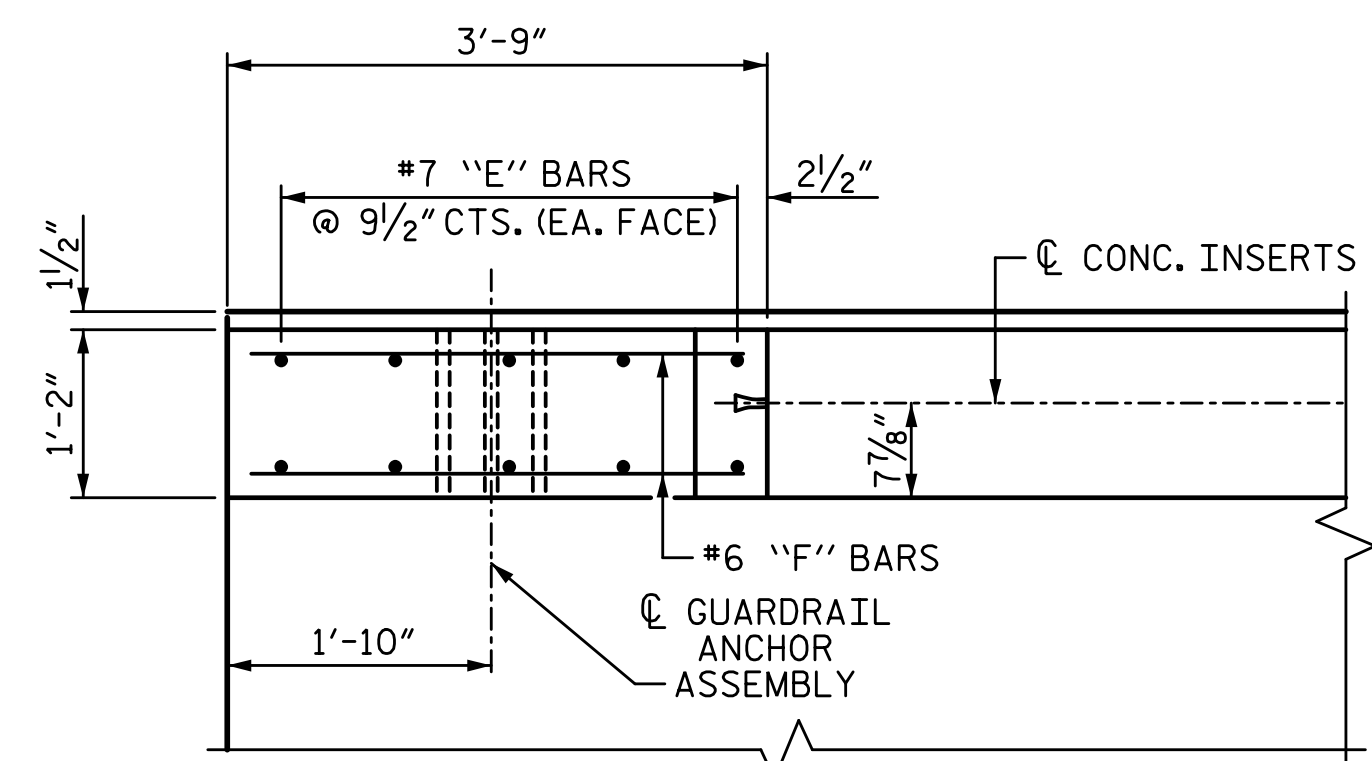


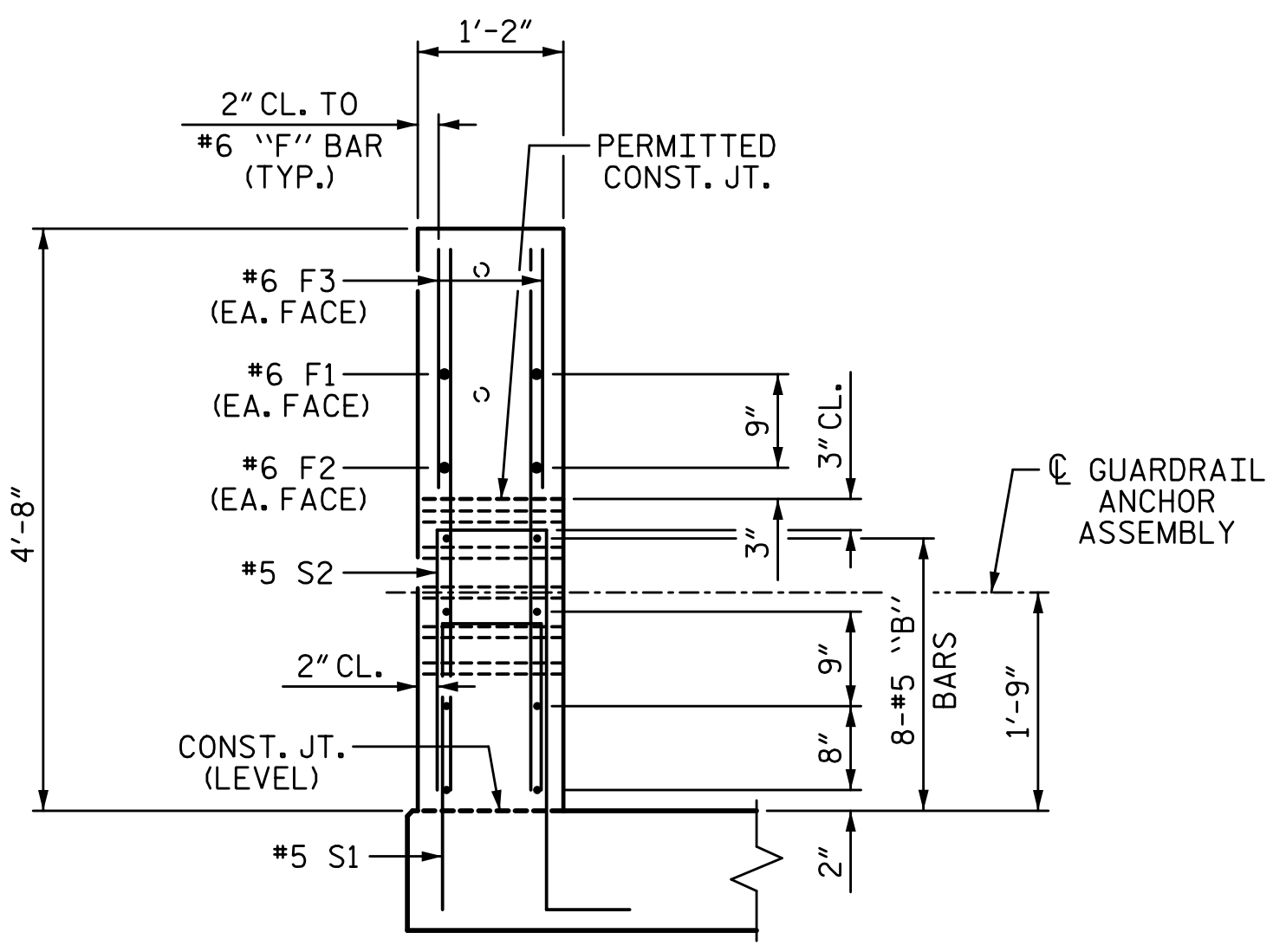
ELEVATION AT EXPANSION JOINTS



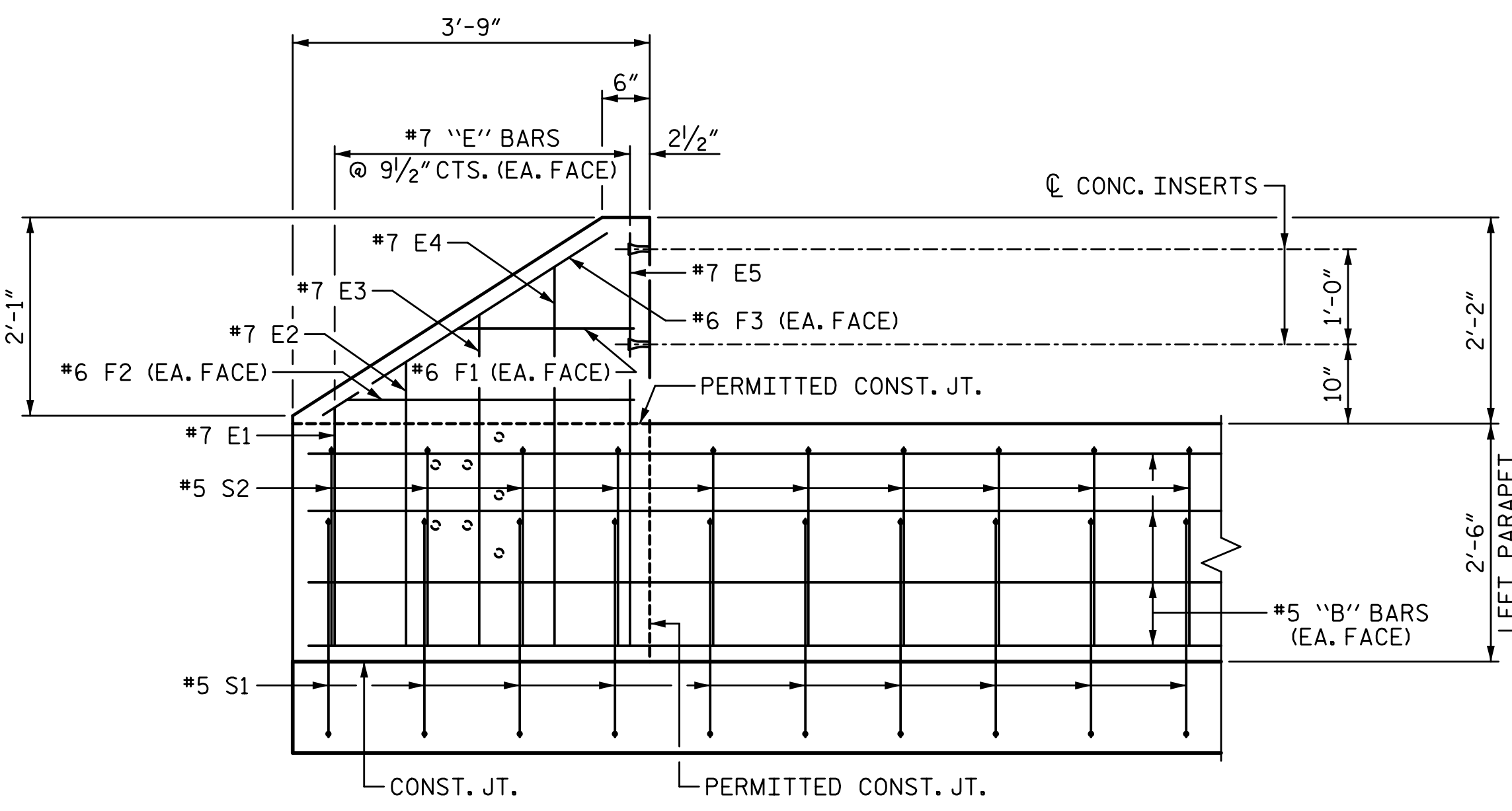
PLAN OF PARAPET



PLAN OF END POST



END VIEW



ELEVATION

PARAPET AND END POST FOR TWO BAR METAL RAIL

NOTES:

CONCRETE PARAPET IN A CONTINUOUS UNIT SHALL NOT BE CAST UNTIL ALL SLAB CONCRETE IN THE UNIT HAS BEEN CAST AND HAS REACHED A MINIMUM COMPRESSIVE STRENGTH OF 3,000 PSI.

ALL REINFORCING STEEL IN PARAPET AND END POSTS SHALL BE EPOXY COATED.

THE #5 S1 AND #5 S2 BARS MAY BE SHIFTED SLIGHTLY IN ORDER TO MAINTAIN A 2" MINIMUM CLEARANCE TO THE 1/2" EXPANSION JT. MATERIAL IN PARAPET.

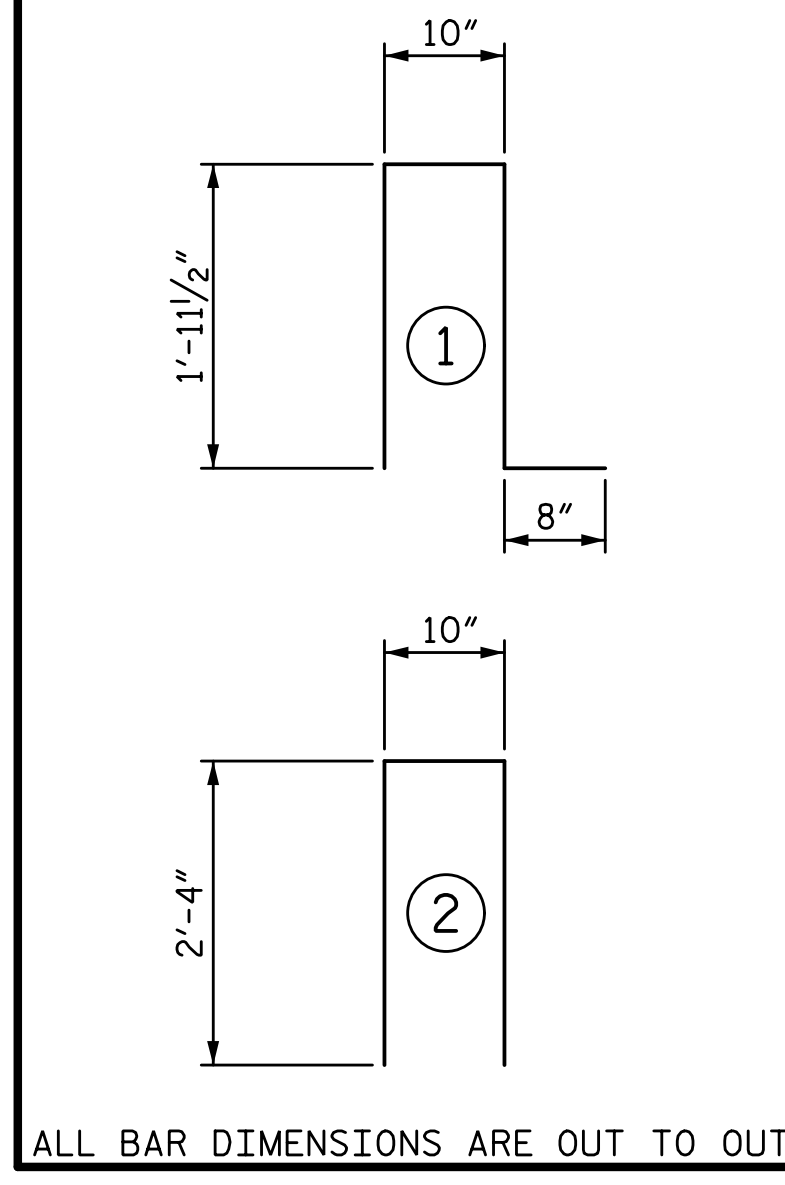
FOR DETAILS OF CONCRETE INSERTS IN END POSTS, SEE "RAIL POST SPACINGS AND END OF RAIL DETAILS" SHEET.

THE JOINT IN THE DECK AT BENT 2 SHALL BE SAWED PRIOR TO CASTING OF THE PARAPET.

GROOVED CONTRACTION JOINTS, 1/2" IN DEPTH, SHALL BE TOOLED IN ALL EXPOSED FACES OF THE PARAPET IN ACCORDANCE WITH ARTICLE 825-10(B) OF THE STANDARD SPECIFICATIONS. A CONTRACTION JOINT SHALL BE LOCATED AT EACH THIRD POINT BETWEEN PARAPET EXPANSION JOINTS. ONLY ONE CONTRACTION JOINT IS REQUIRED AT MIDPOINT OF PARAPET SEGMENTS LESS THAN 20 FEET IN LENGTH AND NO CONTRACTION JOINTS ARE REQUIRED FOR THOSE SEGMENTS LESS THAN 10 FEET IN LENGTH.

FOR DETAILS AND LOCATION OF GUARDRAIL ANCHOR ASSEMBLIES, SEE "GUARDRAIL ANCHORAGE DETAILS FOR METAL RAILS" SHEET.

BAR TYPES



ALL BAR DIMENSIONS ARE OUT TO OUT

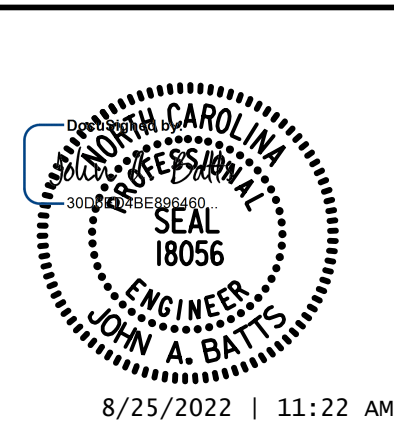
BILL OF MATERIAL

LT. PARAPET AND END POSTS					
BAR NO.	NO.	SIZE	TYPE	LENGTH	WEIGHT
*B1	80	#5	STR	24'-7"	2051
*B2	48	#5	STR	27'-10"	1393
*B3	16	#5	STR	28'-0"	467
*E1	4	#7	STR	2'-6"	20
*E2	4	#7	STR	3'-0"	25
*E3	4	#7	STR	3'-6"	29
*E4	4	#7	STR	4'-0"	33
*E5	4	#7	STR	4'-4"	35
*F1	4	#6	STR	1'-10"	11
*F2	4	#6	STR	3'-0"	18
*F3	4	#6	STR	3'-5"	21
*S1	482	#5	1	5'-5"	2723
*S2	482	#5	2	5'-6"	2765
TOTAL REINFORCING STEEL					9591 LB
CLASS AA CONCRETE					51.9 CY
1'-2" X 2'-6" CONCRETE PARAPET					476.33 LF

PROJECT NO. Y-4810K
 CABARRUS COUNTY
 STATION: 31+94.08 -L-

SHEET 2 OF 3

STATE OF NORTH CAROLINA
 DEPARTMENT OF TRANSPORTATION
 RALEIGH
 SUPERSTRUCTURE
 CONCRETE PARAPET
 DETAILS
 (LEFT SIDE)



LICENSURE NO. C-4434

REVISIONS				SHEET NO.	
NO.	BY:	DATE:	NO.	BY:	DATE:
1			3		
2			4		

DRAWN BY: S.D. COOPER DATE: 2-19
 CHECKED BY: J. A. BATTS DATE: 2-19
 DESIGN ENGINEER OF RECORD: J. A. BATTS DATE: 2-19

DOCUMENT NOT CONSIDERED FINAL
 UNLESS ALL SIGNATURES COMPLETED

8/25/2022 2:05:00 PM P:\Rail\Projects\2015\Y-4810K (NCDOT Rail Div)\Structures\Drawings\Final\Y4810K_SMU_BR.dgn