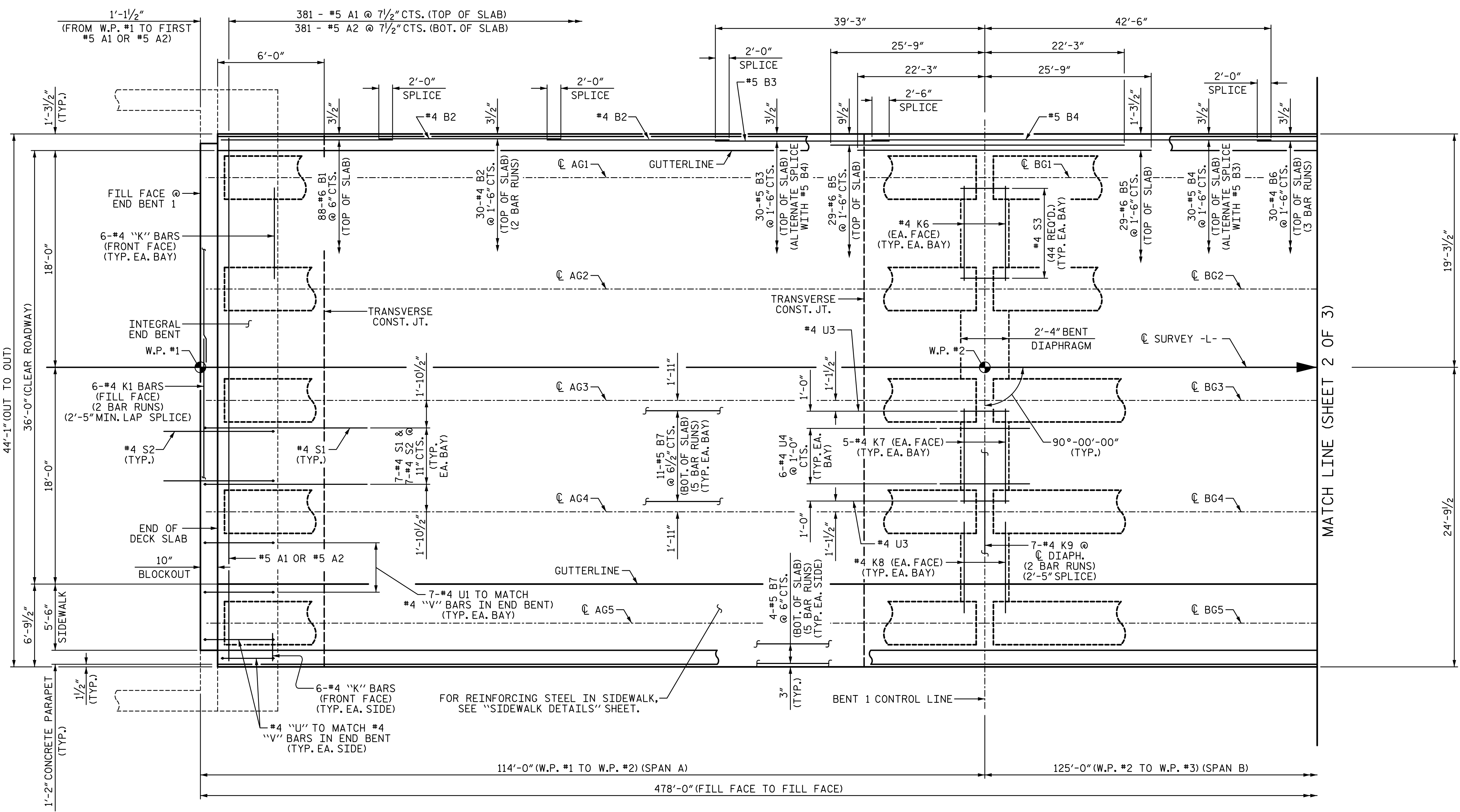


8/25/2022 2:04:53 PM P:\RailDiv\Projects\2015\Y-4810K (NCDOT RailDiv)\Structures\Drawings\Final\Y4810K_SMU_PS.dgn



NOTES:

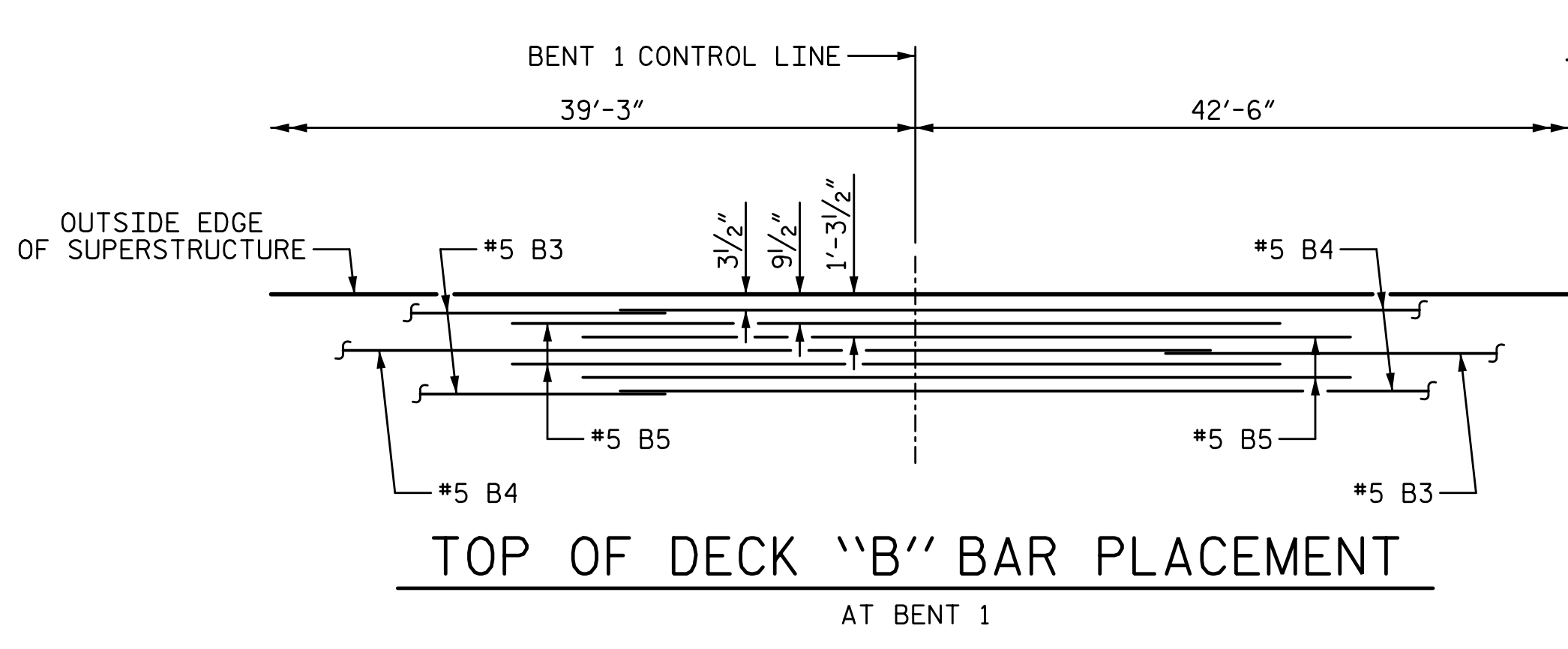
FOR LOCATION OF INTERMEDIATE STEEL DIAPHRAGMS SEE "FRAMING PLAN" SHEET.

FOR POUR SEQUENCE AND LOCATION OF TRANSVERSE CONSTRUCTION JOINTS, SEE "BILL OF MATERIAL" SHEET 1 OF 2.

FOR PARAPET DETAILS AND REINFORCING STEEL, SEE "CONCRETE PARAPET DETAILS" SHEET.

FOR REINFORCING STEEL IN END BENT CAPS AND WINGS, SEE "END BENT" SHEETS.

FOR SPLICE LENGTH NOT SHOWN, REFER TO SPLICE CHART ON "BILL OF MATERIAL" SHEET 2 OF 2.



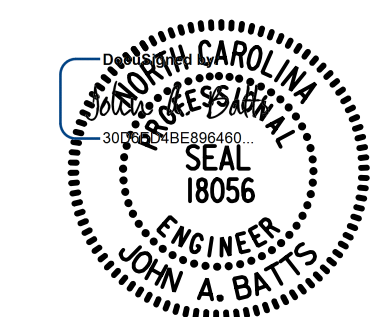
PLAN OF SPANS

PROJECT NO. Y-4810K
CABARRUS COUNTY
 STATION: 31+94.08 -L-

SHEET 1 OF 3

STATE OF NORTH CAROLINA
 DEPARTMENT OF TRANSPORTATION
 RALEIGH
 SUPERSTRUCTURE

PLAN OF SPANS



DRAWN BY: J. R. SEALEY	DATE: 2-19
CHECKED BY: J. A. BATTS	DATE: 2-19
DESIGN ENGINEER OF RECORD: J. A. BATTS	DATE: 2-19

REVISIONS						SHEET NO. S-13
NO.	BY:	DATE:	NO.	BY:	DATE:	
1			3			TOTAL SHEETS 53
2			4			

DOCUMENT NOT CONSIDERED FINAL
UNLESS ALL SIGNATURES COMPLETED