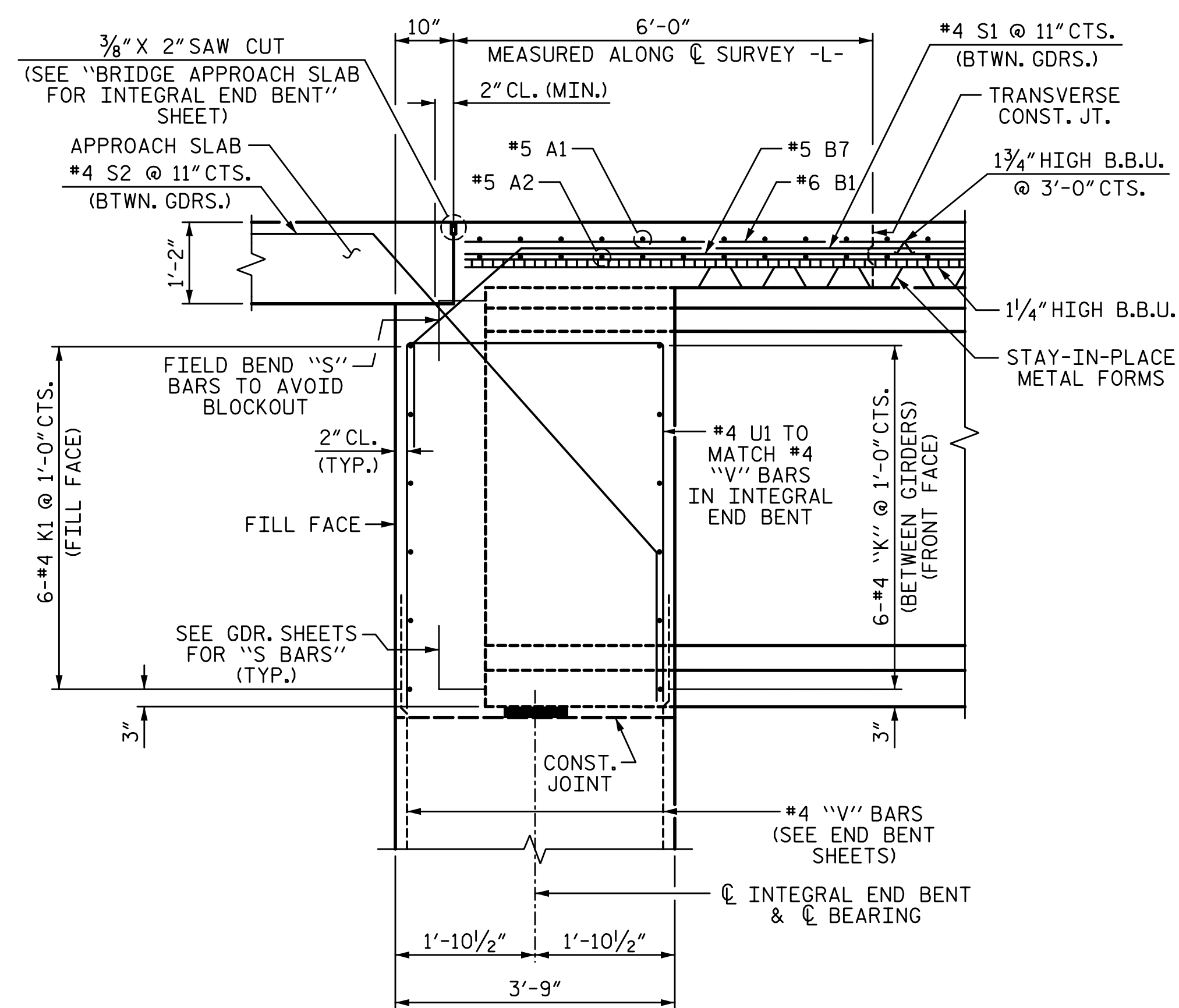
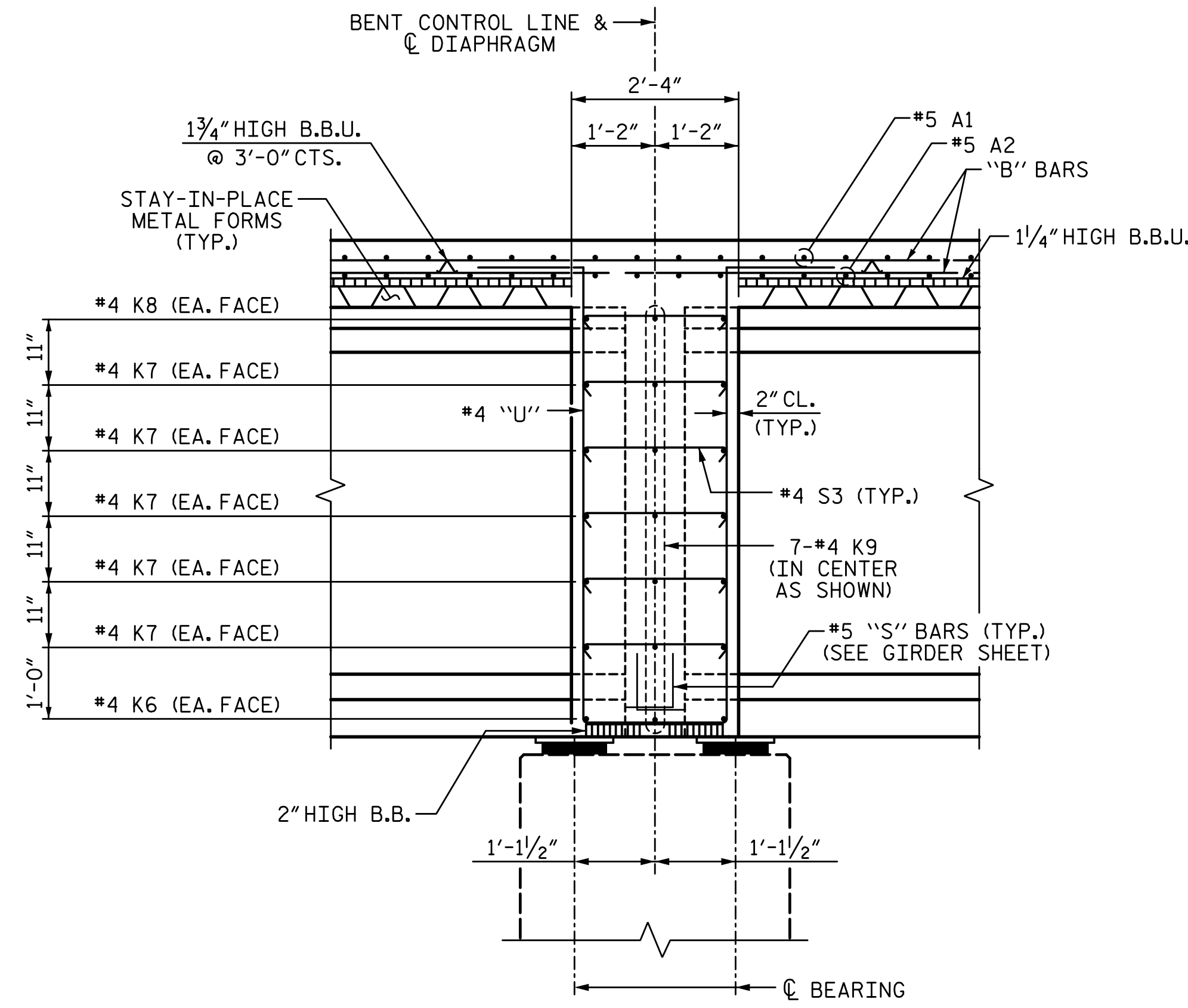


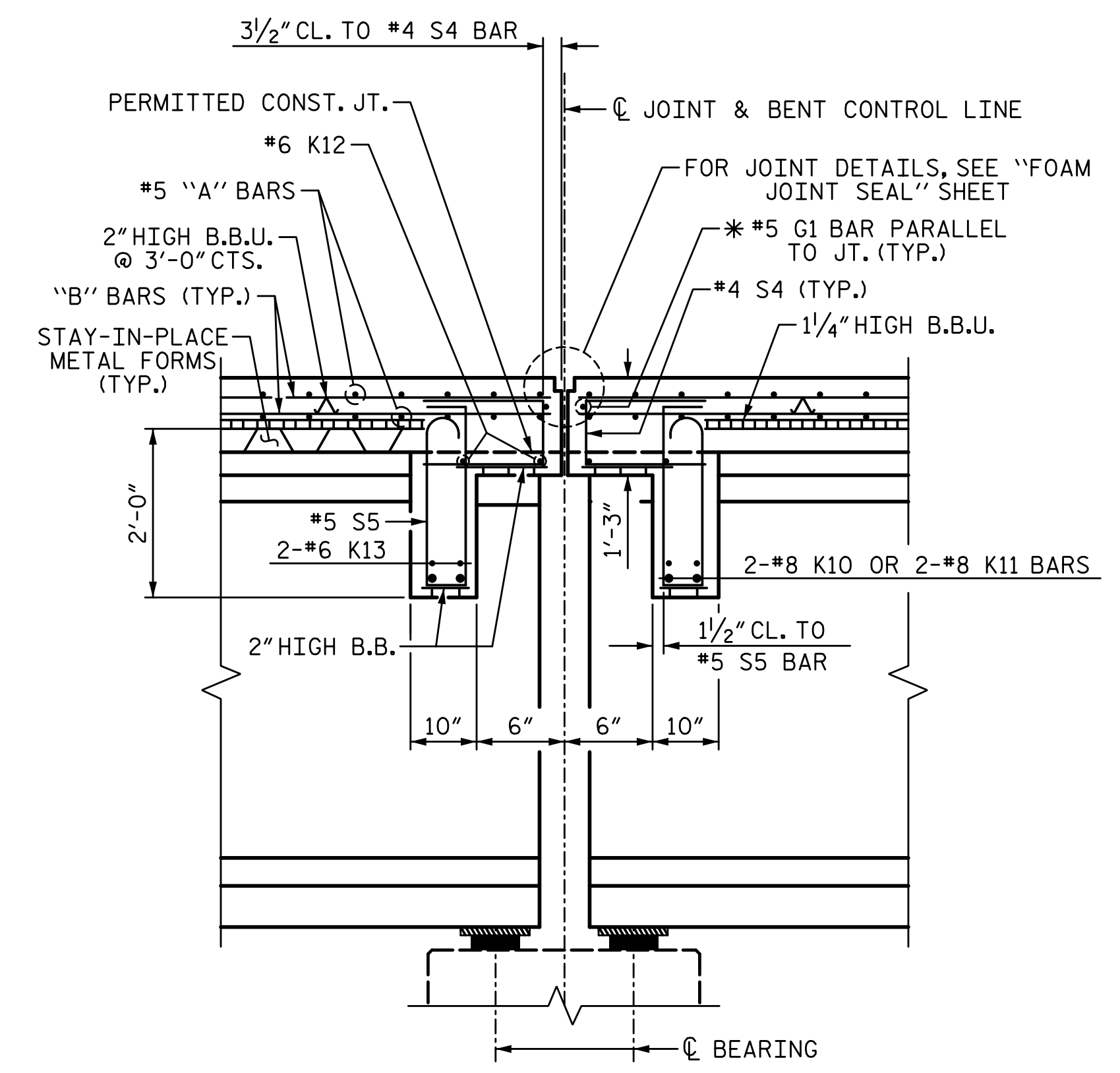
8/25/2022 2:04:51 PM P:\Rail\Projects\2015\Y-4810K (NCDOT RailDiv)\Structures\Drawings\Final\Y4810K_SMU_TS.dgn



SECTION THROUGH END BENT DIAPHRAGM
 (SEE END BENT SHEETS FOR INTEGRAL END BENT REINFORCING DETAILS)
 (END BENT 1 SHOWN, END BENT 2 SIMILAR)

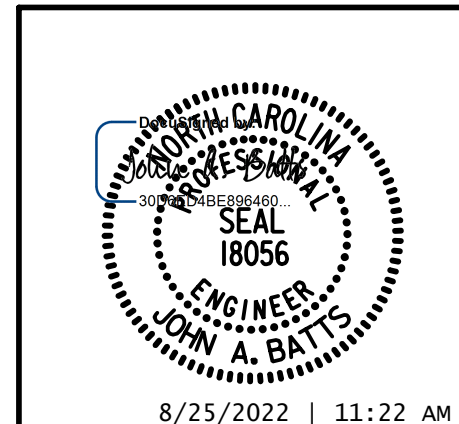


SECTION THROUGH INTERIOR BENT DIAPHRAGM @ BENTS 1 & 3



SECTION THRU DIAPHRAGM @ BENT 2
 (* #5 G1 BAR MAY BE SHIFTED SLIGHTLY AS NECESSARY, TO CLEAR REINFORCING STEEL AND STIRRUPS)

DRAWN BY: J.R. SEALEY	DATE: 2-19
CHECKED BY: J. A. BATTS	DATE: 2-19
DESIGN ENGINEER OF RECORD: J. A. BATTS	DATE: 2-19



PROJECT NO. Y-4810K
CABARRUS COUNTY
 STATION: 31+94.08 -L-

SHEET 4 OF 5
 STATE OF NORTH CAROLINA
 DEPARTMENT OF TRANSPORTATION
 RALEIGH
 SUPERSTRUCTURE
 TYPICAL SECTION
 DETAILS

REVISIONS						SHEET NO.
NO.	BY:	DATE:	NO.	BY:	DATE:	S-11
1			3			TOTAL SHEETS
2			4			53

DOCUMENT NOT CONSIDERED FINAL UNLESS ALL SIGNATURES COMPLETED