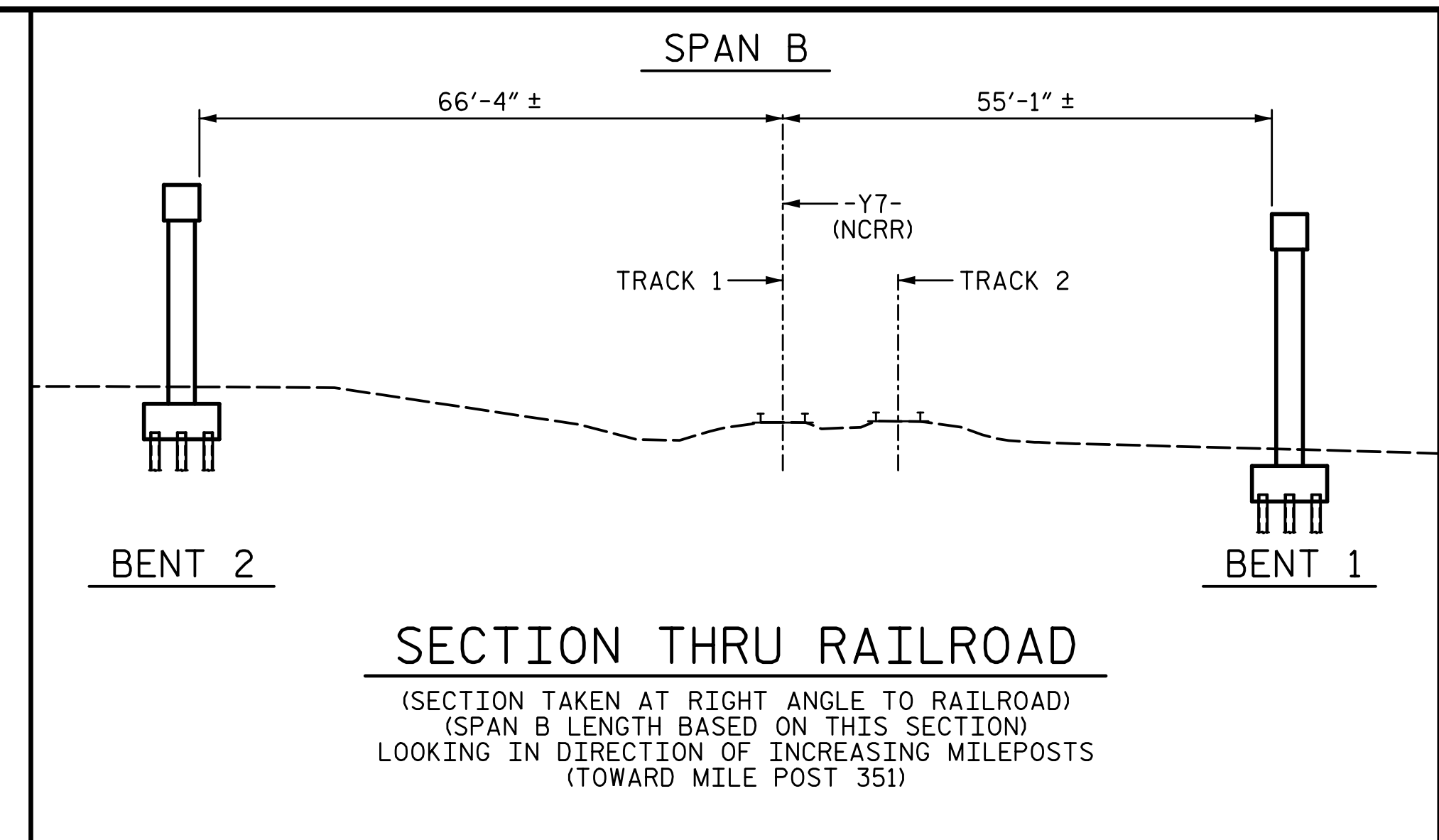
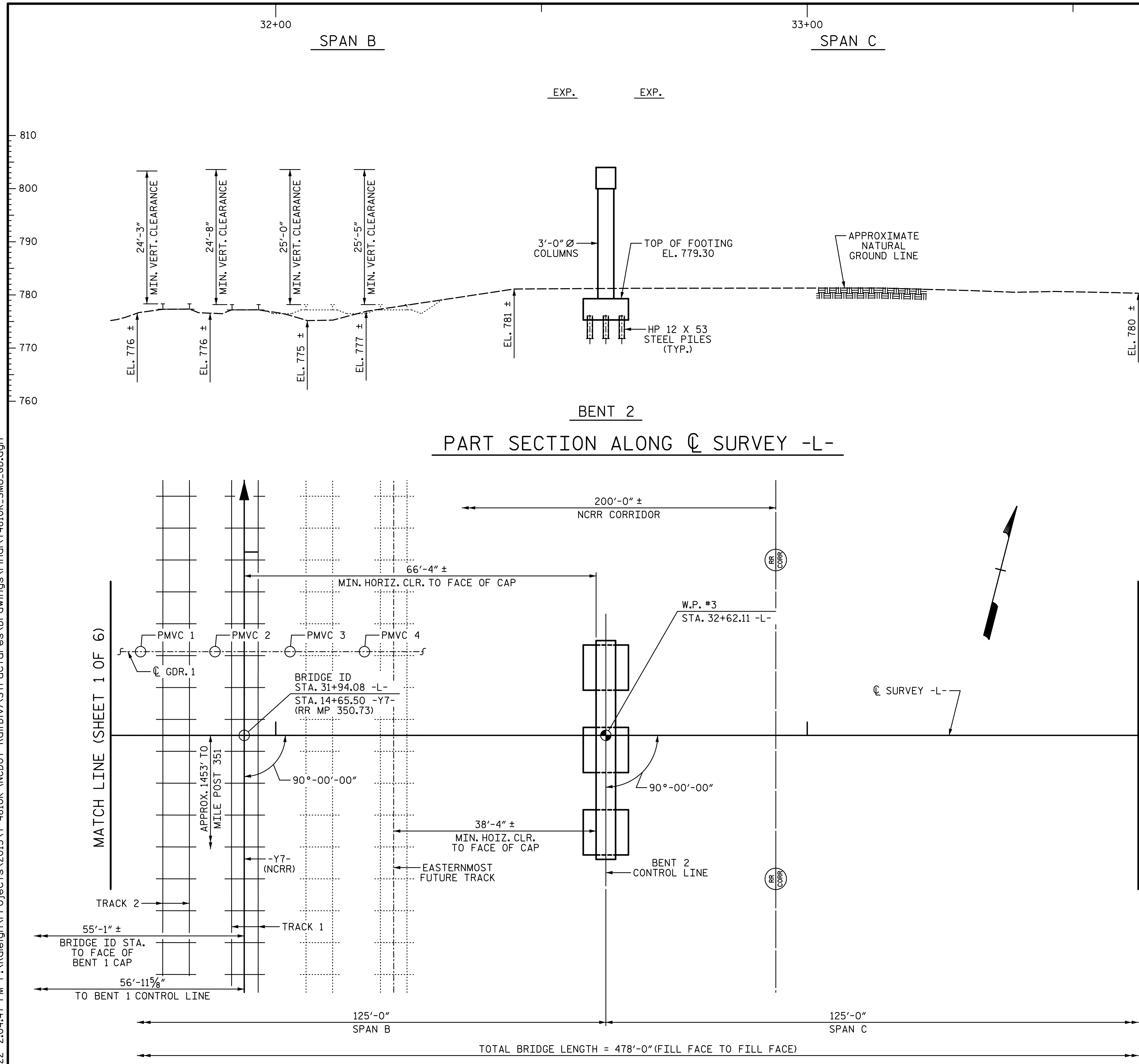


8/25/2022 2:04:47 PM P:\Rail\Projects\2015\Y-4810K (NCDOT Rail)\Div\Structures\Drawings\Final\Y4810K_SMU_GD.dgn

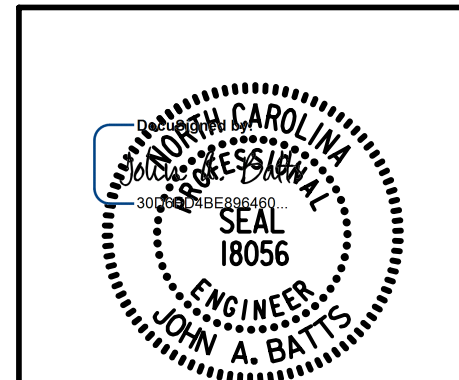


TRACK BED ELEVATIONS			
TRACK 2		TRACK 1	
STA. -Y7-	ELEVATION	STA. -Y7-	ELEVATION
14+15.00	777.00	14+16.62	777.00
14+20.00	777.02		
14+25.00	777.04		
14+30.00	777.06	14+32.32	777.07
14+35.00	777.08		
14+40.00	777.10	14+42.16	777.11
14+45.00	777.12		
14+50.00	777.14	14+52.84	777.15
14+55.00	777.16		
14+60.00	777.18		
14+65.00	777.20	14+67.16	777.20
14+70.00	777.21		
14+75.00	777.23		
14+80.00	777.25	14+82.86	777.26
14+85.00	777.27		
14+90.00	777.29	14+92.51	777.30
14+95.00	777.31		
15+00.00	777.33	15+03.06	777.34
15+05.00	777.35		
15+10.00	777.36		
15+15.00	777.37	15+17.28	777.38

- PMVC 1**
STA. 31+74.58 -L- OFFSET 15'-9" LT.
STA. 14+81.25 -Y7- OFFSET 19'-6" LT.
 - PMVC 2**
STA. 31+88.58 -L- OFFSET 15'-9" LT.
STA. 14+81.25 -Y7- OFFSET 5'-6" LT.
 - PMVC 3**
STA. 32+02.58 -L- OFFSET 15'-9" LT.
STA. 14+81.25 -Y7- OFFSET 8'-6" RT.
 - PMVC 4**
STA. 32+16.58 -L- OFFSET 15'-9" LT.
STA. 14+81.25 -Y7- OFFSET 22'-6" RT.
- PMVC = POINT OF MINIMUM VERTICAL CLEARANCE

PROJECT NO. Y-4810K
CABARRUS COUNTY
STATION: 31+94.08 -L-
14+65.50 -Y7-
SHEET 2 OF 6

MILE POST 350.73
STATE OF NORTH CAROLINA
DEPARTMENT OF TRANSPORTATION
RALEIGH
GENERAL DRAWING
FOR BRIDGE ON ROGERS LAKE RD.
OVER US 29A (MAIN ST.), NCRR (NS)
AND S. RIDGE AVE. BETWEEN
LOWRANCE AVE. AND MEADOW AVE.



REVISIONS				SHEET NO.	
NO.	BY:	DATE:	NO.	BY:	DATE:
1			3		
2			4		

TOTAL SHEETS: 53

DRAWN BY: S.D. COOPER DATE: 2-19
CHECKED BY: J. A. BATTS DATE: 2-19
DESIGN ENGINEER OF RECORD: J. A. BATTS DATE: 2-19

PART PLAN
(PILES AND COLUMNS NOT SHOWN IN PLAN VIEW)

8/25/2022 11:22 AM
LICENSURE NO. C-4434
**DOCUMENT NOT CONSIDERED FINAL
UNLESS ALL SIGNATURES COMPLETED**