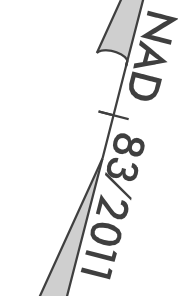
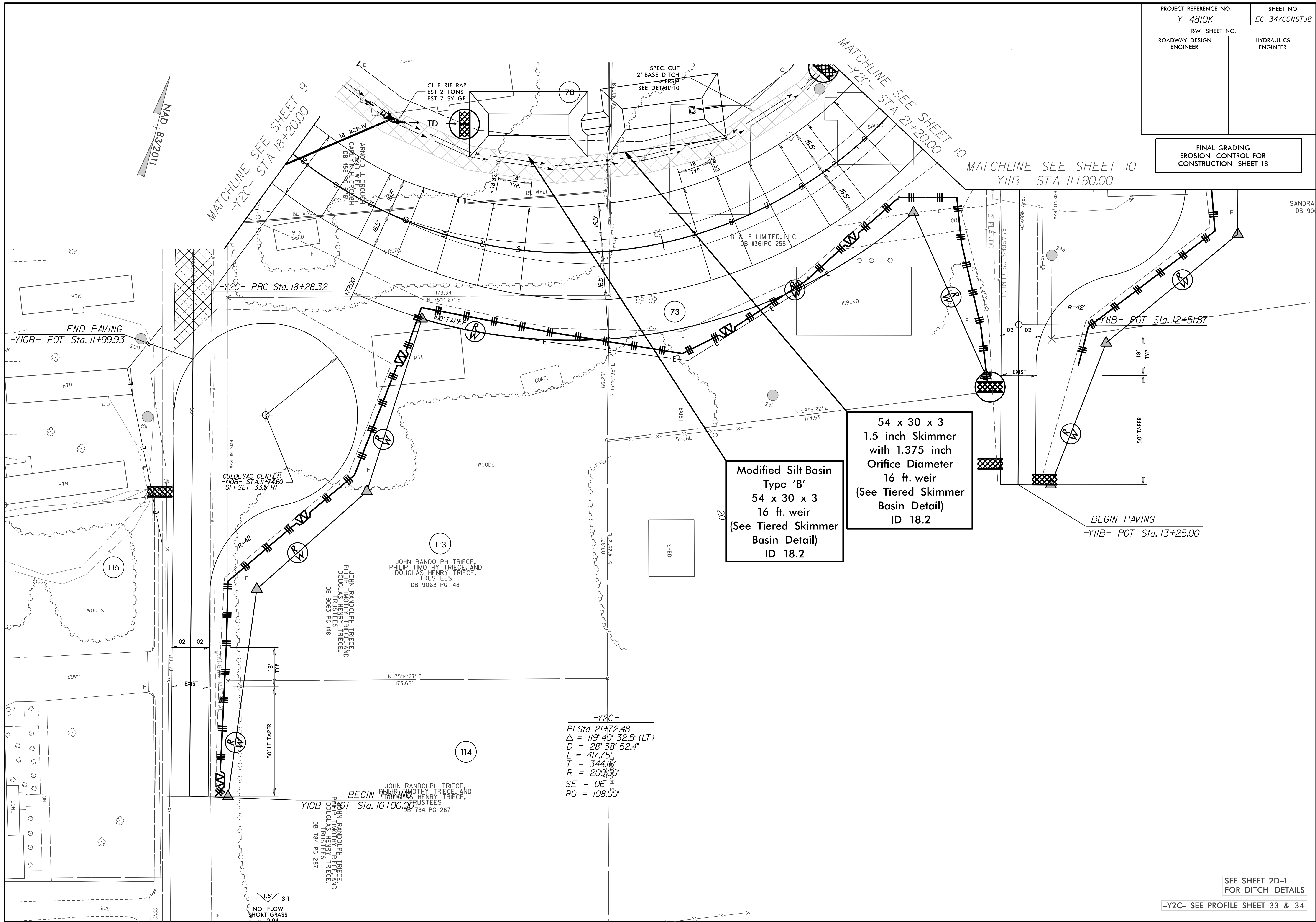


PROJECT REFERENCE NO.	SHEET NO.
Y-4810K	EC-34/CONST.18
RW SHEET NO.	
ROADWAY DESIGN ENGINEER	HYDRAULICS ENGINEER

FINAL GRADING
EROSION CONTROL FOR
CONSTRUCTION SHEET 18



MATCHLINE SEE SHEET 9
-Y2C- STA 18+20.00

MATCHLINE SEE SHEET 10
-Y2C- STA 21+20.00

MATCHLINE SEE SHEET 10
-Y11B- STA 11+90.00

Modified Silt Basin
Type 'B'
54 x 30 x 3
16 ft. weir
(See Tiered Skimmer
Basin Detail)
ID 18.2

54 x 30 x 3
1.5 inch Skimmer
with 1.375 inch
Orifice Diameter
16 ft. weir
(See Tiered Skimmer
Basin Detail)
ID 18.2

BEGIN PAVING
-Y11B- POT Sta. 13+25.00

-Y2C-
PI Sta 21+72.48
 $\Delta = 119' 40" 32.5"$ (LT)
 $D = 28' 38" 52.4"$
 $L = 417.75'$
 $T = 344.16'$
 $R = 200.00'$
 $SE = 06'$
 $RO = 108.00'$

SEE SHEET 2D-1
FOR DITCH DETAILS

-Y2C- SEE PROFILE SHEET 33 & 34