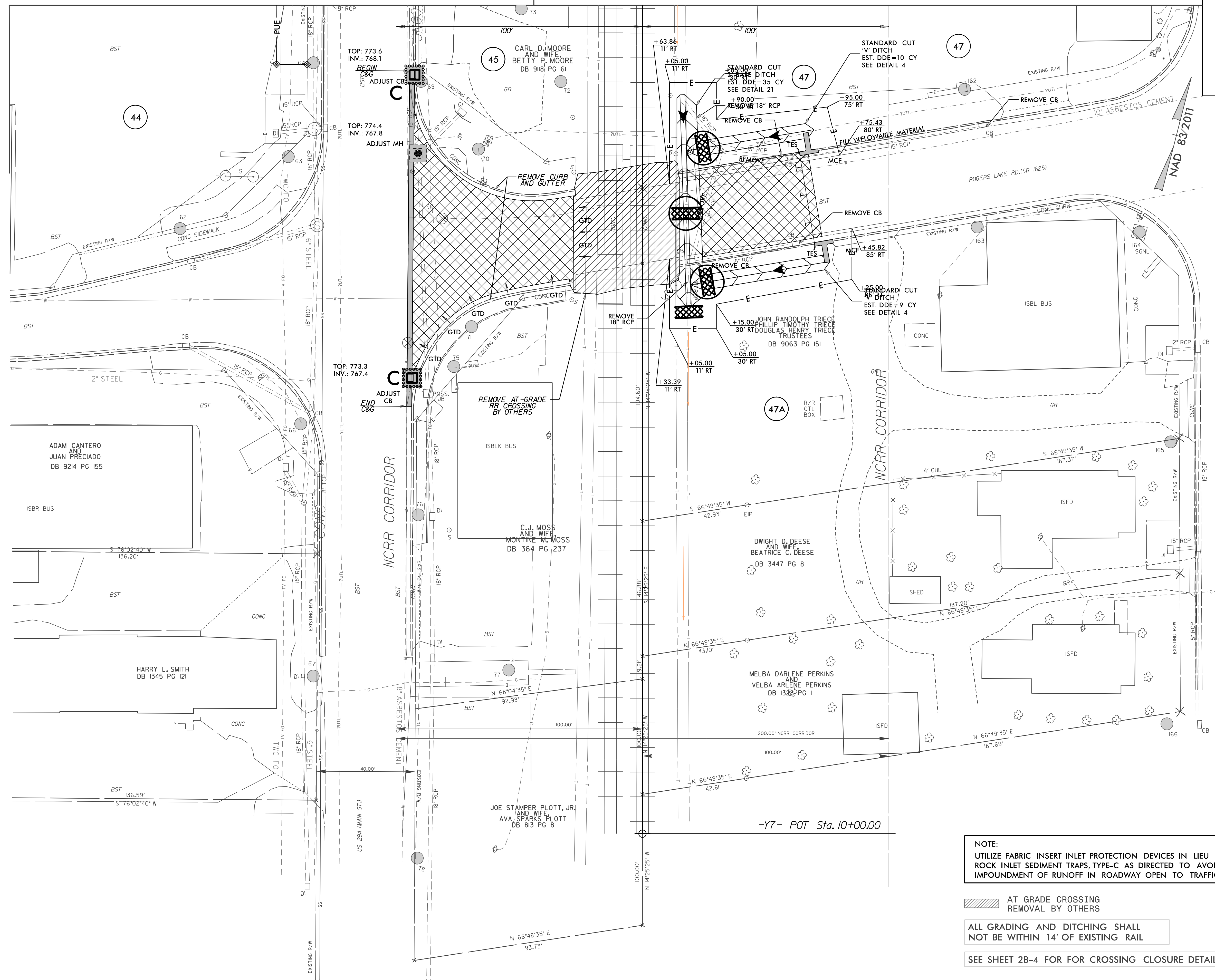


PROJECT REFERENCE NO.	SHEET NO.
Y-4810K	EC-32/CONST.16
RW SHEET NO.	
ROADWAY DESIGN ENGINEER	HYDRAULICS ENGINEER

FINAL GRADING  
EROSION CONTROL FOR  
CONSTRUCTION SHEET 16

MATCHLINE SEE SHEET 7

MATCHLINE SEE SHEET 8



NOTE:  
UTILIZE FABRIC INSERT INLET PROTECTION DEVICES IN LIEU OF  
ROCK INLET SEDIMENT TRAPS, TYPE-C AS DIRECTED TO AVOID  
IMPOUNDMENT OF RUNOFF IN ROADWAY OPEN TO TRAFFIC.

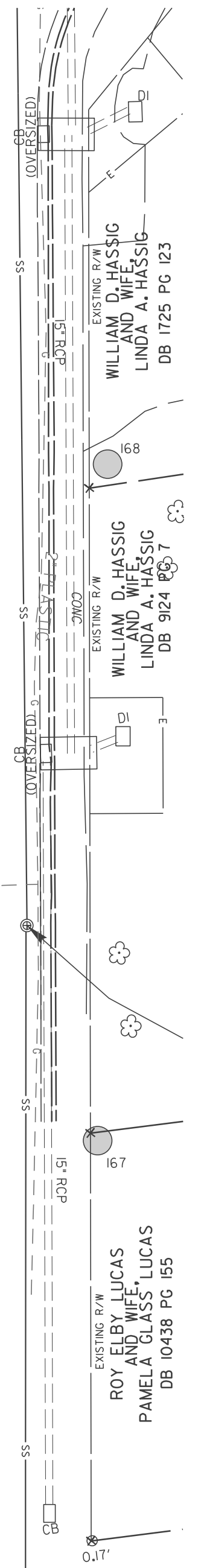
▨ AT GRADE CROSSING  
REMOVAL BY OTHERS

ALL GRADING AND DITCHING SHALL  
NOT BE WITHIN 14' OF EXISTING RAIL

SEE SHEET 2B-4 FOR CROSSING CLOSURE DETAIL

NAD 83/2011

S. RIDGE AVE.



ADAM CANTERO  
AND  
JUAN PRECIADO  
DB 9214 PG 155

HARRY L. SMITH  
DB 1345 PG 121

JOE STAMPER PLOTT, JR.  
AND WIFE  
AVA SPARKS PLOTT  
DB 913 PG 8

MELBA DARLENE PERKINS  
AND  
VELBA ARLENE PERKINS  
DB 1328 PG 1

DWIGHT D. DEESE  
AND WIFE  
BEATRICE C. DEESE  
DB 3447 PG 8

C. J. MOSS  
AND WIFE  
MONTINE W. MOSS  
DB 364 PG 237

JOHN RANDOLPH TRICE  
PHILLIP TIMOTHY TRICE  
30' RT DOUGLAS HENRY TRICE  
TRUSTEES  
DB 9063 PG 151

CARL D. MOORE  
AND WIFE  
BETTY R. MOORE  
DB 918 PG 61

WILLIAM D. HASSIG  
AND WIFE  
LINDA A. HASSIG  
DB 1725 PG 123

WILLIAM D. HASSIG  
AND WIFE  
LINDA A. HASSIG  
DB 924 PG 7

ROY KELLY LUCAS  
AND WIFE  
PAMELA GLASS LUCAS  
DB 10438 PG 155