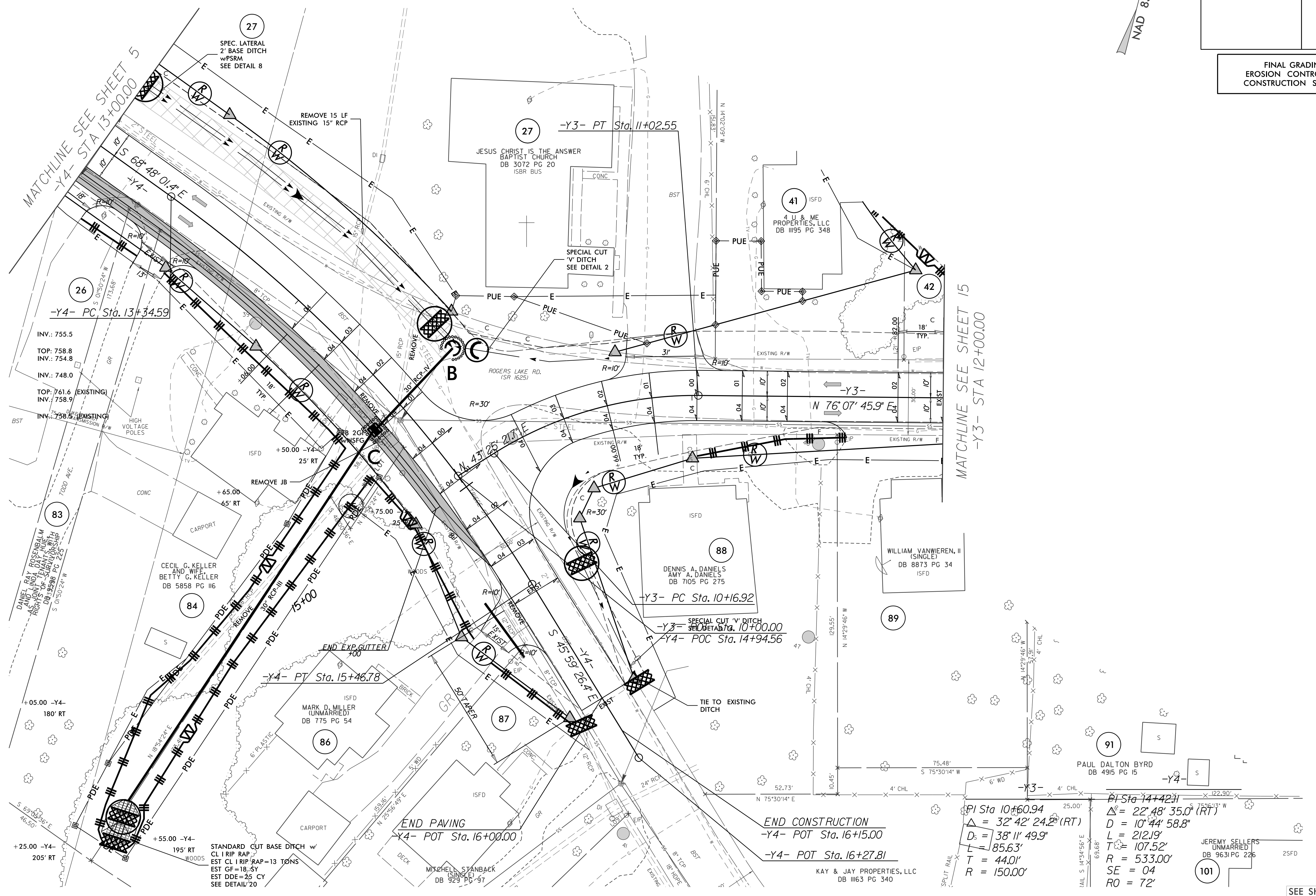
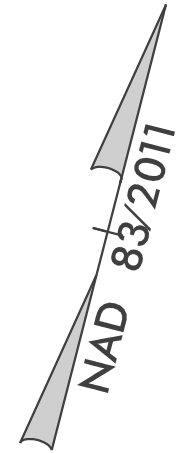


| | |
|-------------------------|---------------------|
| PROJECT REFERENCE NO. | SHEET NO. |
| Y-4810K | EC-30/CONST.14 |
| RW SHEET NO. | |
| ROADWAY DESIGN ENGINEER | HYDRAULICS ENGINEER |

FINAL GRADING
EROSION CONTROL FOR
CONSTRUCTION SHEET 14



| | |
|--|--|
| $PI\ Sta\ 10+60.94$ $\Delta = 32^{\circ}42'24.2''(RT)$ $D_s = 38'11'49.9''$ $L = 85.63'$ $T = 44.01'$ $R = 150.00'$ | $PI\ Sta\ 14+42.11$ $\Delta = 22^{\circ}48'35.0''(RT)$ $D = 10^{\circ}44'58.8''$ $L = 212.19'$ $T = 107.52'$ $R = 533.00'$ $SE = 04$ $RO = 72'$ |
|--|--|

SEE SHEET 2D-1
FOR DITCH DETAILS

-Y4- SEE PROFILE SHEET 35 & 36
-Y3- SEE PROFILE SHEET 36