

PROJECT REFERENCE NO.	SHEET NO.
Y-4810K	EC-29/CONST.13
RW SHEET NO.	
ROADWAY DESIGN ENGINEER	HYDRAULICS ENGINEER

FINAL GRADING  
EROSION CONTROL FOR  
CONSTRUCTION SHEET 13

TOP: 786.5  
INV.: 784.2  
TOP: 783.3  
INV.: 780.8  
INV.: 780.3 Y. GLASS  
IF E.  
WENDULIN P. GLASS  
DB 298 PG 526

RICHARD THOMAS ABSHER  
AND WIFE  
JANET WILSON ABSHER  
DB 1713 PG 92

CITY OF KANNAPOLIS,  
A NORTH CAROLINA MUNICIPAL  
CORPORATION  
DB 10233 PG 345

NAD 83/2011

-Y2A-  
PI Sta 13+21.80  
 $\Delta = 3^{\circ}19'56.5"$  (RT)  
 $D = 1^{\circ}59'30.8"$   
 $L = 167.30'$   
 $T = 83.67'$   
 $R = 2,876.47'$

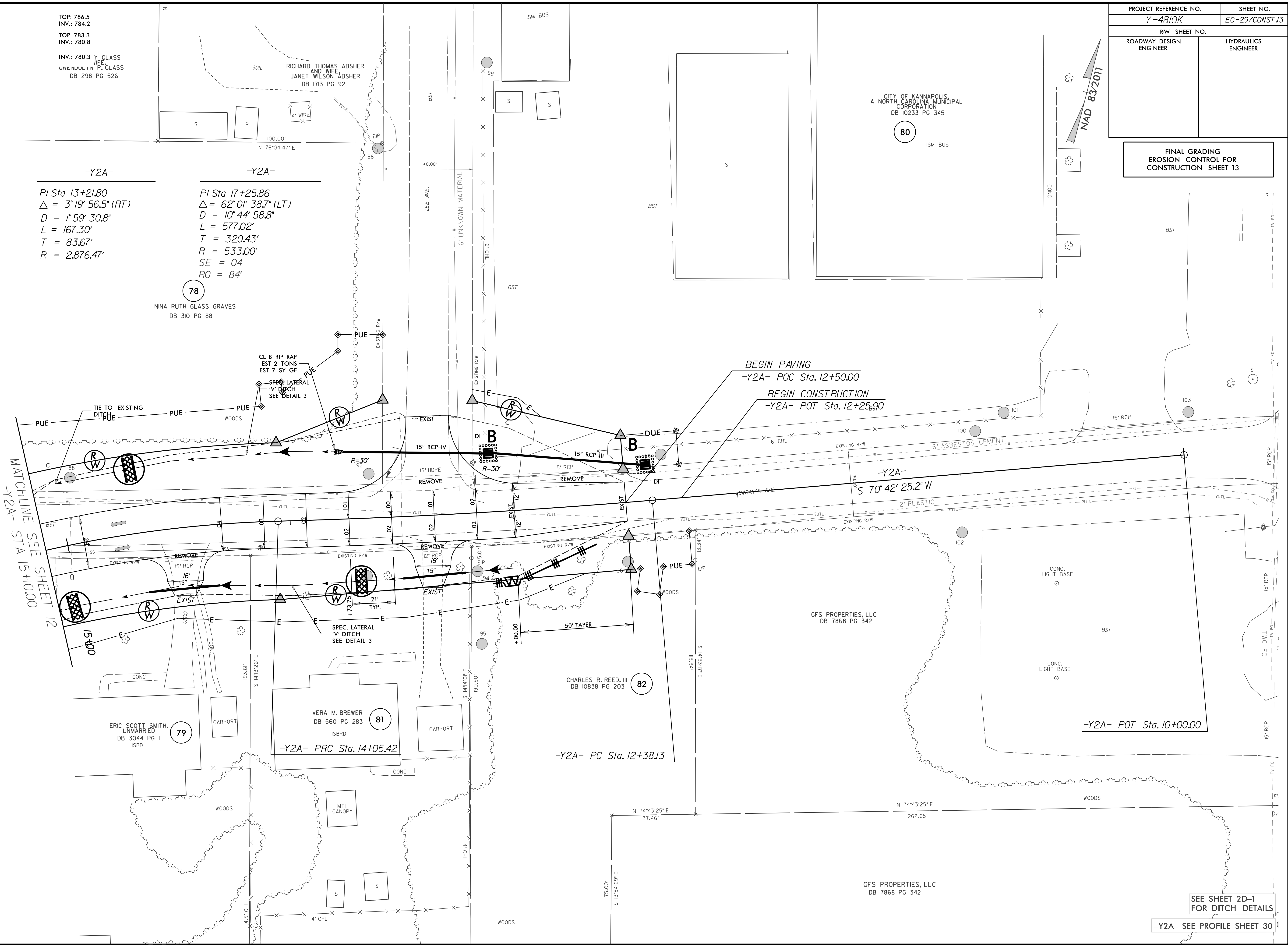
-Y2A-  
PI Sta 17+25.86  
 $\Delta = 62^{\circ}01'38.7"$  (LT)  
 $D = 10^{\circ}44'58.8"$   
 $L = 577.02'$   
 $T = 320.43'$   
 $R = 533.00'$   
 $SE = 04'$   
 $RO = 84'$

78  
NINA RUTH GLASS GRAVES  
DB 310 PG 88

CL B RIP RAP  
EST 2 TONS  
EST 7 SY GF  
SPEC. LATERAL  
"V" DITCH  
SEE DETAIL 3

BEGIN PAVING  
-Y2A- POC Sta. 12+50.00  
BEGIN CONSTRUCTION  
-Y2A- POT Sta. 12+25.00

MATCHLINE SEE SHEET 12  
-Y2A- STA 15+10.00



ERIC SCOTT SMITH,  
UNMARRIED  
DB 3044 PG 1  
ISBD

VERA M. BREWER  
DB 560 PG 283  
ISBRD

CHARLES R. REED, III  
DB 10838 PG 203

GFS PROPERTIES, LLC  
DB 7868 PG 342

GFS PROPERTIES, LLC  
DB 7868 PG 342

SEE SHEET 2D-1  
FOR DITCH DETAILS

-Y2A- SEE PROFILE SHEET 30