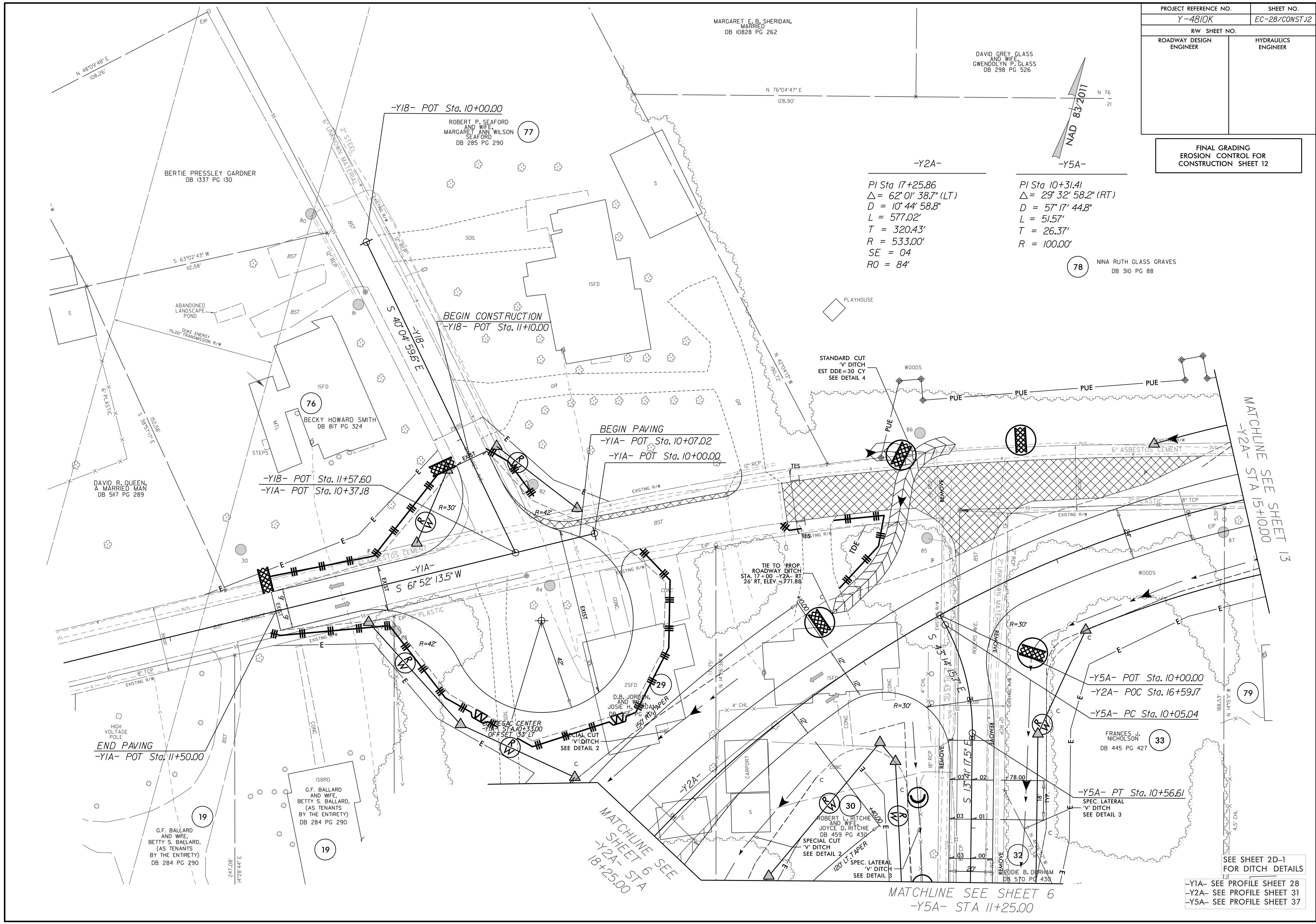


PROJECT REFERENCE NO.	SHEET NO.
Y-4810K	EC-28/CONST.12
RW SHEET NO.	
ROADWAY DESIGN ENGINEER	HYDRAULICS ENGINEER

FINAL GRADING
EROSION CONTROL FOR
CONSTRUCTION SHEET 12



MARGARET E. B. SHERIDAN,
MARRIED
DB 10828 PG 262

DAVID GREY GLASS
AND WIFE
GWENDOLYN P. GLASS
DB 298 PG 526



-Y2A-
PI Sta 17+25.86
 $\Delta = 62^{\circ} 01' 38.7''$ (LT)
 $D = 10^{\circ} 44' 58.8''$
 $L = 577.02'$
 $T = 320.43'$
 $SE = 04$
 $RO = 84'$

-Y5A-
PI Sta 10+31.41
 $\Delta = 29^{\circ} 32' 58.2''$ (RT)
 $D = 57^{\circ} 17' 44.8''$
 $L = 51.57'$
 $T = 26.37'$
 $R = 100.00'$

78 NINA RUTH GLASS GRAVES
DB 310 PG 88

77 ROBERT P. SEAFORD
AND WIFE
MARGARET ANN WILSON
SEAFORD
DB 285 PG 290

BERTIE PRESSLEY GARDNER
DB 1337 PG 130

76 BECKY HOWARD SMITH
DB 817 PG 324

DAVID R. QUEEN,
A MARRIED MAN
DB 5117 PG 289

-Y18- POT Sta. 11+57.60
-Y1A- POT Sta. 10+37.18

BEGIN PAVING
-Y1A- POT Sta. 10+07.02
-Y1A- POT Sta. 10+00.00

STANDARD CUT
"V" DITCH
EST DDE=30 CY
SEE DETAIL 4

TIE TO PROP.
ROADWAY DITCH
STA. 17+00 -Y2A- RT
26' RT, ELEV.=771.88

END PAVING
-Y1A- POT Sta. 11+50.00

19 G.F. BALLARD
AND WIFE,
BETTY S. BALLARD,
(AS TENANTS
BY THE ENTIRETY)
DB 284 PG 290

19 G.F. BALLARD
AND WIFE,
BETTY S. BALLARD,
(AS TENANTS
BY THE ENTIRETY)
DB 284 PG 290

30 ROBERT L. MITCHELL
AND WIFE
JOYCE D. MITCHELL
DB 459 PG 430

33 FRANCES J.
NICHOLSON
DB 445 PG 427

-Y5A- POT Sta. 10+00.00
-Y2A- POC Sta. 16+59.17
-Y5A- PC Sta. 10+05.04

-Y5A- PT Sta. 10+56.61
SPEC. LATERAL
"V" DITCH
SEE DETAIL 3

SEE SHEET 2D-1
FOR DITCH DETAILS

-Y1A- SEE PROFILE SHEET 28
-Y2A- SEE PROFILE SHEET 31
-Y5A- SEE PROFILE SHEET 37

MATCHLINE SEE
SHEET 6
-Y2A- STA
18+25.00

MATCHLINE SEE SHEET 6
-Y5A- STA 11+25.00

MATCHLINE SEE SHEET 13
-Y2A- STA 15+10.00

79