

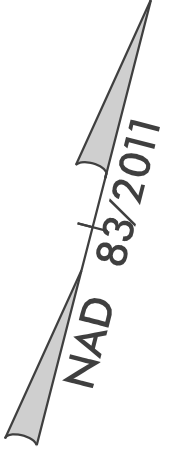
PROJECT REFERENCE NO.	SHEET NO.
Y-4810K	EC-25/CONST.09
RW SHEET NO.	
ROADWAY DESIGN ENGINEER	HYDRAULICS ENGINEER

-L-  
 PI Sta 37+53.74 PI Sta 42+73.11  
 $\Delta = 6' 16" 23.3" (RT)$   $\Delta = 13' 57" 57.4" (LT)$   
 $D = 2' 29' 28.0"$   $D = 2' 29' 28.0"$   
 $L = 251.82'$   $L = 560.63'$   
 $T = 126.04'$   $T = 281.71'$   
 $R = 2,300.00'$   $R = 2,300.00'$   
 $SE = 03$   $SE = 03$   
 $RO = 84'$   $RO = 84'$

-Y2C-  
 PI Sta 16+61.08  
 $\Delta = 45' 03' 49.7" (RT)$   
 $D = 12' 43' 56.6"$   
 $L = 353.93'$   
 $T = 186.69'$   
 $R = 450.00'$   
 $SE = 06$   
 $RO = 108.00'$

25 x 51 x 3  
 1.5 inch Skimmer  
 with 1.0 inch  
 Orifice Diameter  
 5 ft. weir  
 ID 9.1

Place Matting for Erosion Control  
 on Slope as Work Allows.  
 Sta. 37+15 to Sta. 41+50 -L- LT  
 Sta. 37+15 to Sta. 41+50 -L- RT

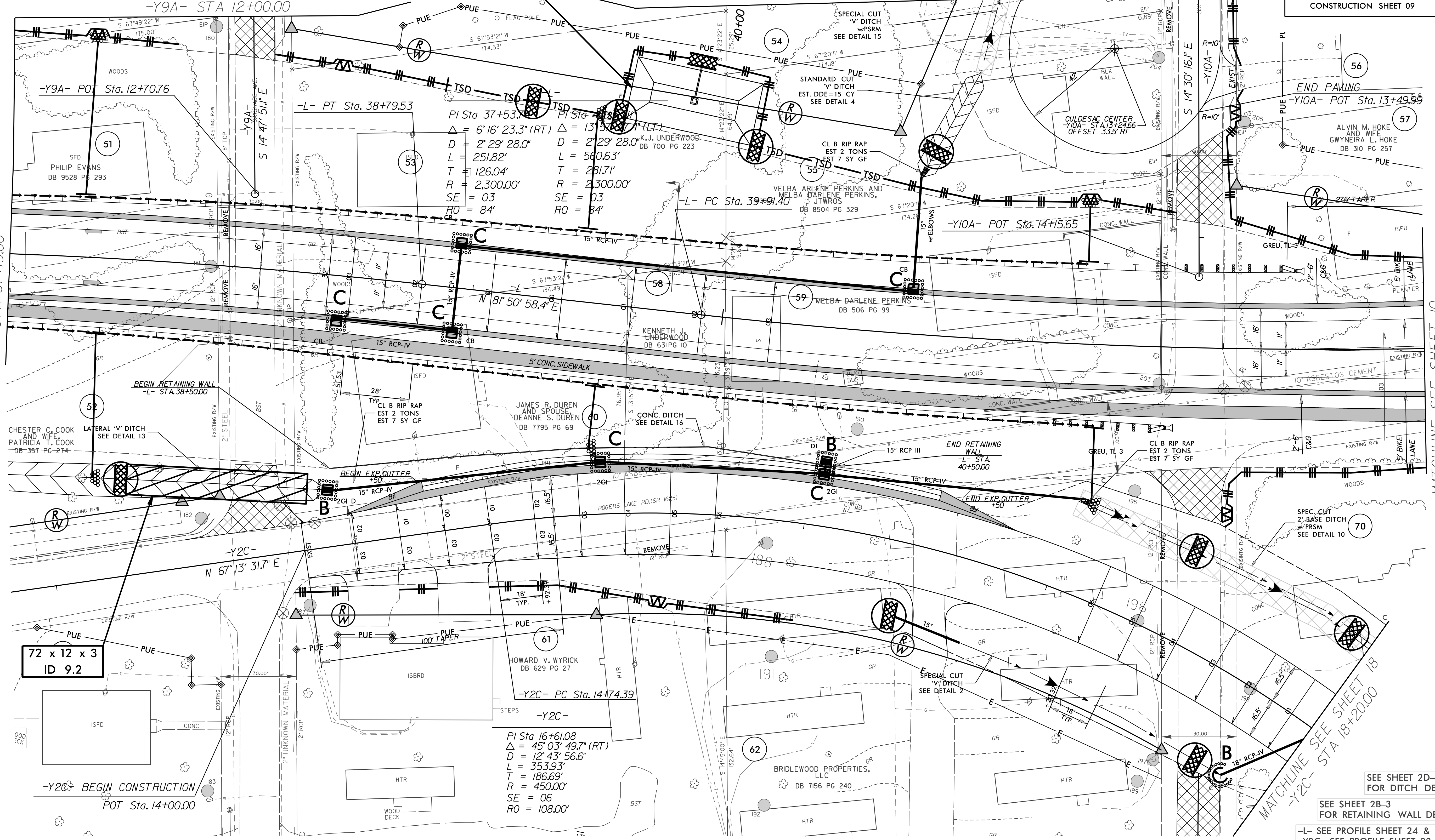


MATCHLINE SEE SHEET 17  
 -Y10A- STA 13+05.00

FINAL GRADING  
 EROSION CONTROL FOR  
 CONSTRUCTION SHEET 09

MATCHLINE SEE SHEET 8  
 -L- STA 37+15.00

MATCHLINE SEE SHEET 10  
 -L- STA 42+80.00



72 x 12 x 3  
 ID 9.2

PI Sta 16+61.08  
 $\Delta = 45' 03' 49.7" (RT)$   
 $D = 12' 43' 56.6"$   
 $L = 353.93'$   
 $T = 186.69'$   
 $R = 450.00'$   
 $SE = 06$   
 $RO = 108.00'$

SEE SHEET 2D-1  
 FOR DITCH DETAILS

SEE SHEET 2B-3  
 FOR RETAINING WALL DETAILS

-L- SEE PROFILE SHEET 24 & 25  
 -Y2C- SEE PROFILE SHEET 33 & 34  
 -Y9A- SEE PROFILE SHEET 39  
 -Y10A- SEE PROFILE SHEET 40