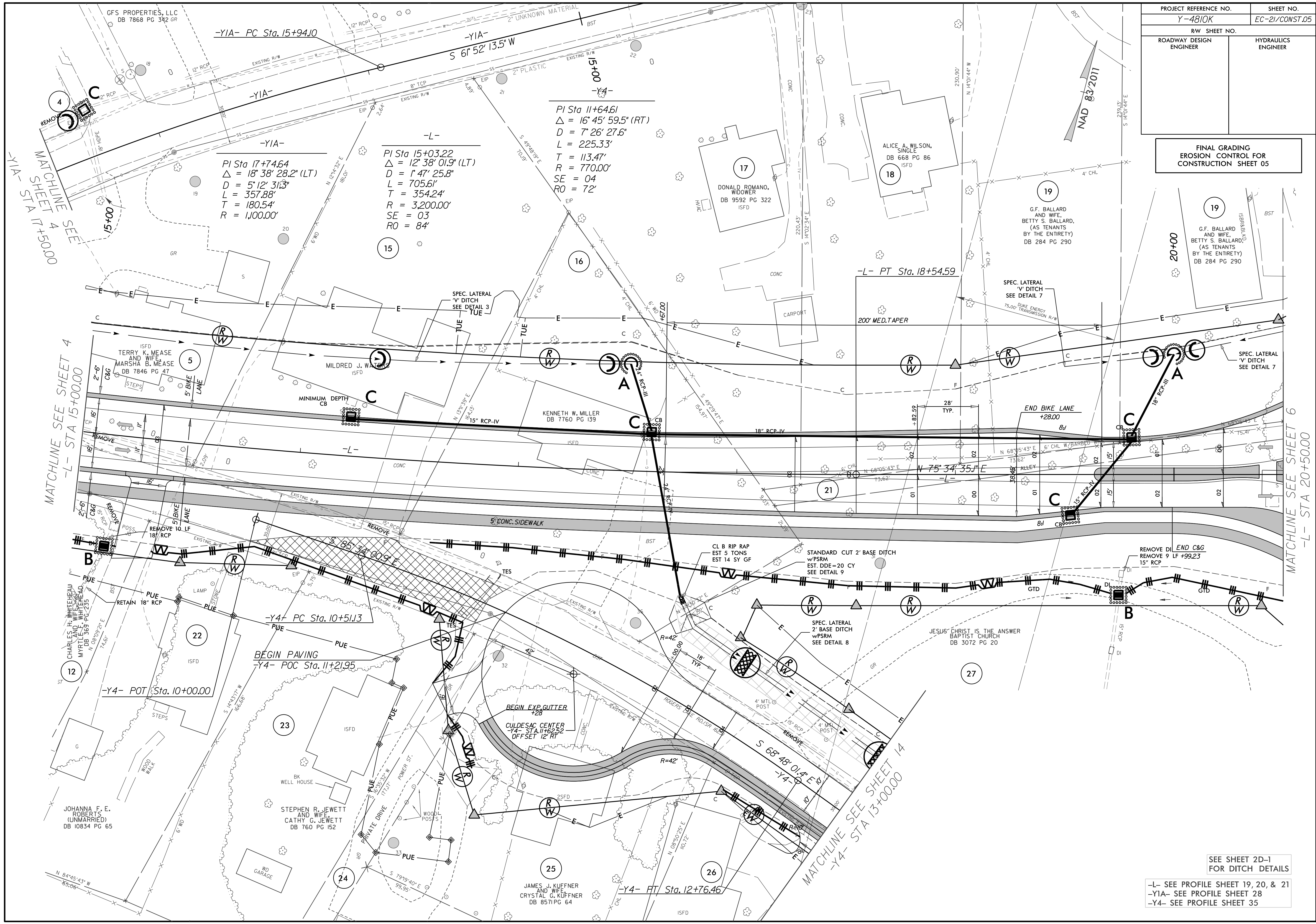


| | |
|-------------------------|---------------------|
| PROJECT REFERENCE NO. | SHEET NO. |
| Y-4810K | EC-21/CONST.05 |
| RW SHEET NO. | |
| ROADWAY DESIGN ENGINEER | HYDRAULICS ENGINEER |

FINAL GRADING
EROSION CONTROL FOR
CONSTRUCTION SHEET 05



-Y1A- PC Sta. 15+94.10
S 61° 52' 13.5" W

PI Sta 17+74.64
Δ = 18° 38' 28.2" (LT)
D = 5' 12' 31.3"
L = 357.88'
T = 180.54'
R = 1,100.00'

PI Sta 15+03.22
Δ = 12° 38' 01.9" (LT)
D = 1' 47' 25.8"
L = 705.61'
T = 354.24'
R = 3,200.00'
SE = 03
RO = 84'

PI Sta 11+64.61
Δ = 16° 45' 59.5" (RT)
D = 7' 26' 27.6"
L = 225.33'
T = 113.47'
R = 770.00'
SE = 04
RO = 72'

-L- PT Sta. 18+54.59

-Y4- PC Sta. 10+51.13

BEGIN PAVING
-Y4- POC Sta. 11+21.95

-Y4- POT Sta. 10+00.00

BEGIN EXP. GUTTER
CULDESAC CENTER
-Y4- STA. 11+62.52
OFFSET 12' RT

-Y4- PT Sta. 12+76.46

S 68° 48' 01.4" E
-Y4-

SEE SHEET 2D-1
FOR DITCH DETAILS

-L- SEE PROFILE SHEET 19, 20, & 21
-Y1A- SEE PROFILE SHEET 28
-Y4- SEE PROFILE SHEET 35

MATCHLINE SEE SHEET 4
-Y1A- STA 17+50.00

MATCHLINE SEE SHEET 4
-L- STA 15+00.00

MATCHLINE SEE SHEET 6
-L- STA 20+50.00