

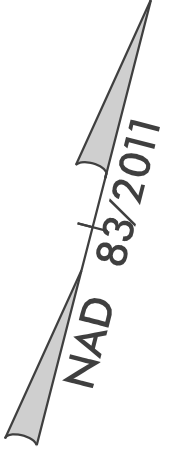
PROJECT REFERENCE NO.	SHEET NO.
Y-4810K	EC-09/CONST.09
RW SHEET NO.	
ROADWAY DESIGN ENGINEER	HYDRAULICS ENGINEER

-L-
 PI Sta 37+53.74 PI Sta 42+73.11
 $\Delta = 6' 16'' 23.3''$ (RT) $\Delta = 13' 57'' 57.4''$ (LT)
 $D = 2' 29'' 28.0''$ $D = 2' 29'' 28.0''$
 $L = 251.82'$ $L = 560.63'$
 $T = 126.04'$ $T = 281.71'$
 $R = 2,300.00'$ $R = 2,300.00'$
 $SE = 03$ $SE = 03$
 $RO = 84'$ $RO = 84'$

-Y2C-
 PI Sta 16+61.08
 $\Delta = 45' 03'' 49.7''$ (RT)
 $D = 12' 43'' 56.6''$
 $L = 353.93'$
 $T = 186.69'$
 $R = 450.00'$
 $SE = 06$
 $RO = 108.00'$

25 x 51 x 3
 1.5 inch Skimmer
 with 1.0 inch
 Orifice Diameter
 5 ft. weir
 ID 9.1

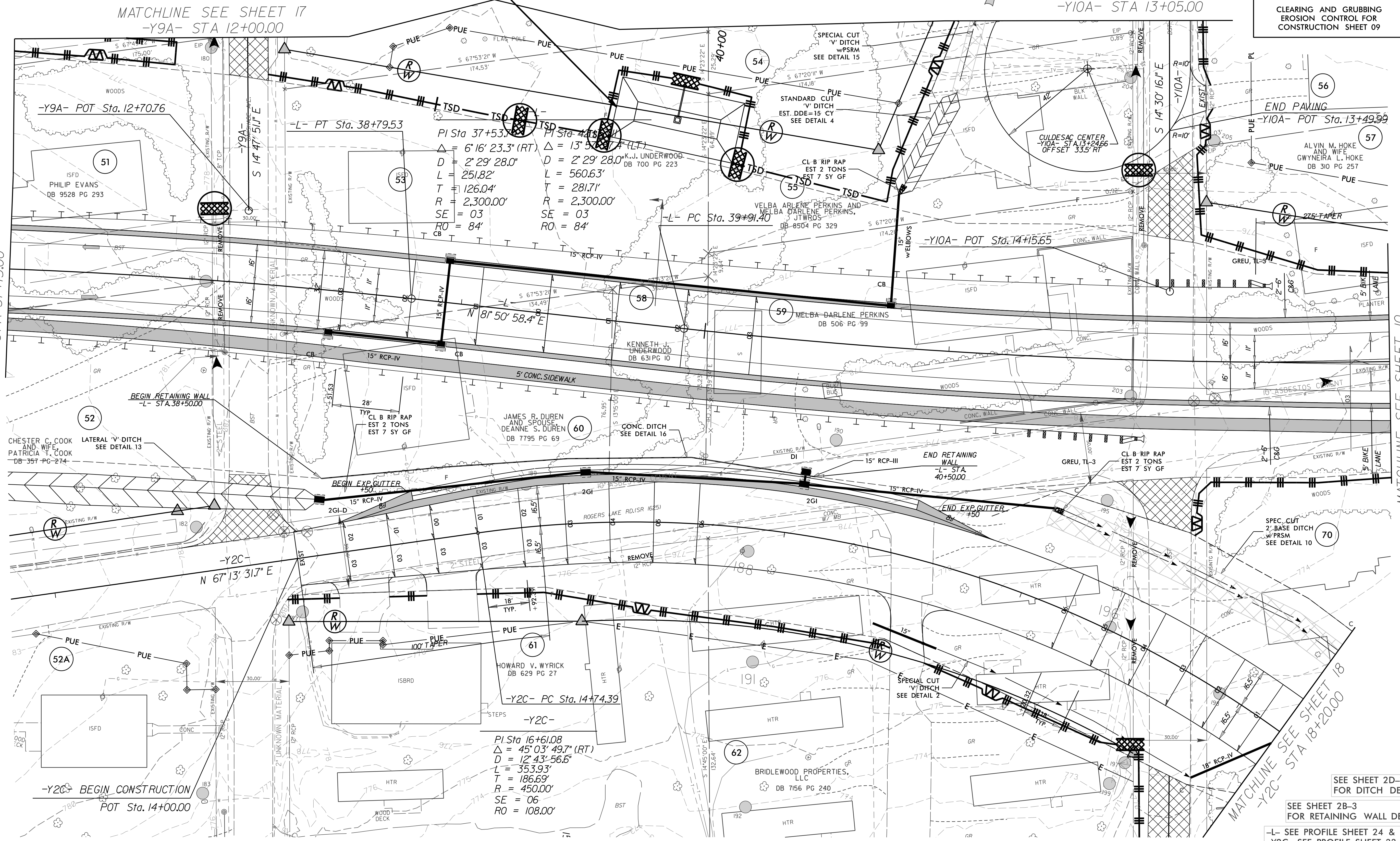
NOTE: PLACE TEMPORARY ROCK SEDIMENT DAMS TYPE - B AND TEMPORARY ROCK SILT CHECKS TYPE - A AT DRAINAGE OUTLETS.



MATCHLINE SEE SHEET 17
 -Y10A- STA 13+05.00

CLEARING AND GRUBBING
 EROSION CONTROL FOR
 CONSTRUCTION SHEET 09

MATCHLINE SEE SHEET 8
 -L- STA 37+15.00



MATCHLINE SEE SHEET 10
 -L- STA 42+80.00

MATCHLINE SEE SHEET 18
 -Y2C- STA 18+20.00

SEE SHEET 2D-1
 FOR DITCH DETAILS

SEE SHEET 2B-3
 FOR RETAINING WALL DETAILS

-L- SEE PROFILE SHEET 24 & 25
 -Y2C- SEE PROFILE SHEET 33 & 34
 -Y9A- SEE PROFILE SHEET 39
 -Y10A- SEE PROFILE SHEET 40