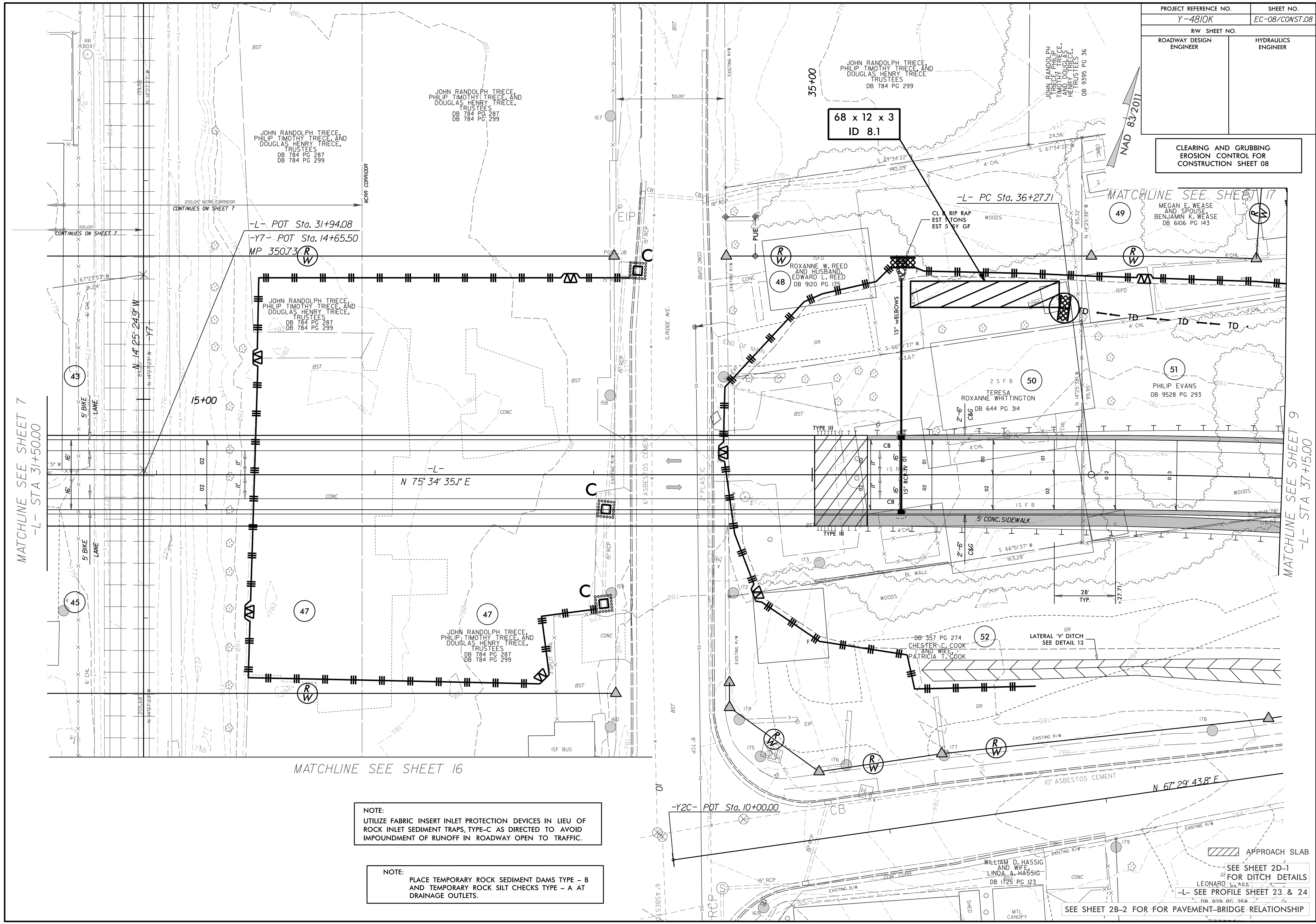


PROJECT REFERENCE NO.	SHEET NO.
Y-4810K	EC-08/CONST.08
RW SHEET NO.	
ROADWAY DESIGN ENGINEER	HYDRAULICS ENGINEER

CLEARING AND GRUBBING
EROSION CONTROL FOR
CONSTRUCTION SHEET 08



MATCHLINE SEE SHEET 7
-L- STA 31+50.00

MATCHLINE SEE SHEET 9
-L- STA 37+15.00

-L- POT Sta. 31+94.08
-Y7- POT Sta. 14+65.50
MP 350.73 (RW)

-L- PC Sta. 36+27.71

-Y2C- POT Sta. 10+00.00

NOTE:
UTILIZE FABRIC INSERT INLET PROTECTION DEVICES IN LIEU OF
ROCK INLET SEDIMENT TRAPS, TYPE-C AS DIRECTED TO AVOID
IMPOUNDMENT OF RUNOFF IN ROADWAY OPEN TO TRAFFIC.

NOTE:
PLACE TEMPORARY ROCK SEDIMENT DAMS TYPE - B
AND TEMPORARY ROCK SILT CHECKS TYPE - A AT
DRAINAGE OUTLETS.

/// APPROACH SLAB
SEE SHEET 2D-1
FOR DITCH DETAILS
LEONARD, SEE
-L- SEE PROFILE SHEET 23 & 24
DB 929 PG 258

SEE SHEET 2B-2 FOR FOR PAVEMENT-BRIDGE RELATIONSHIP