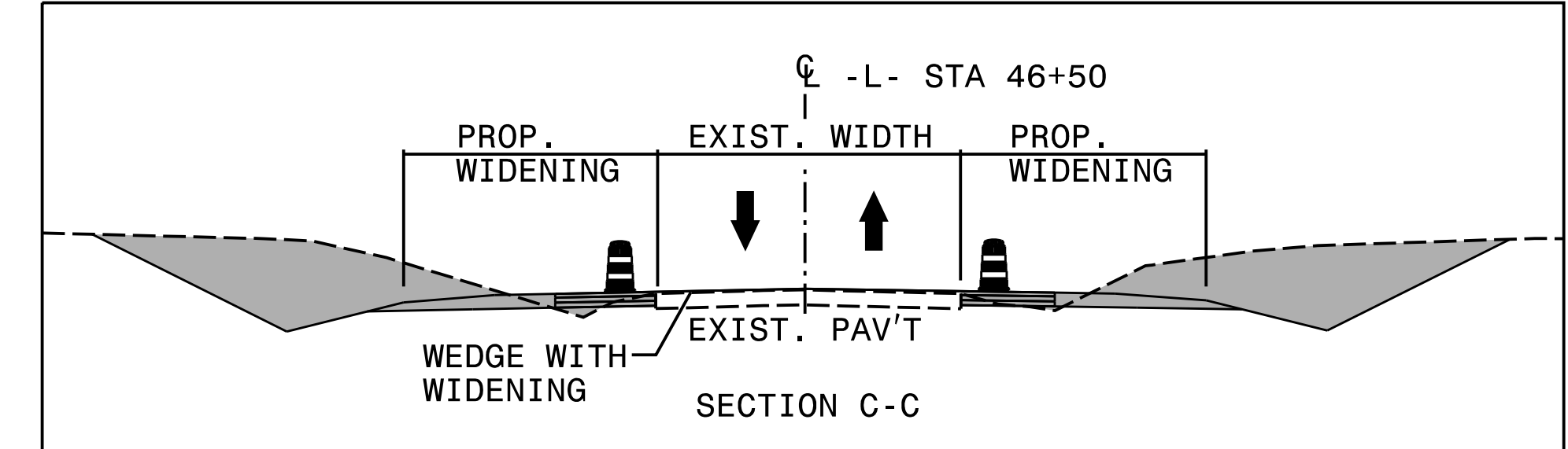
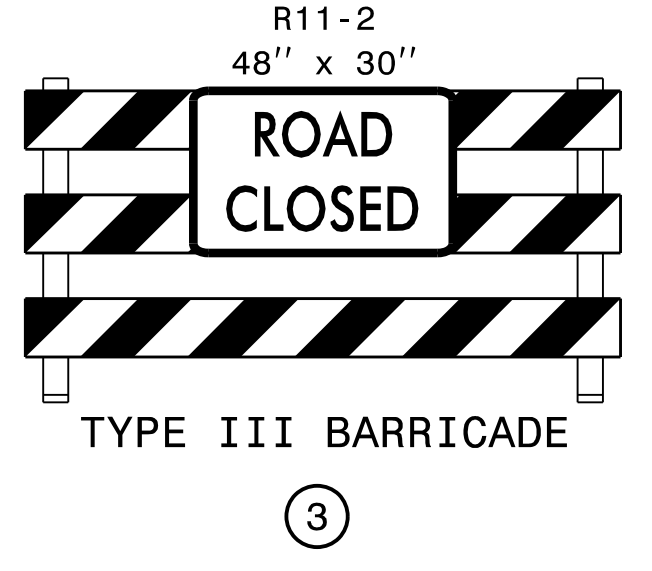
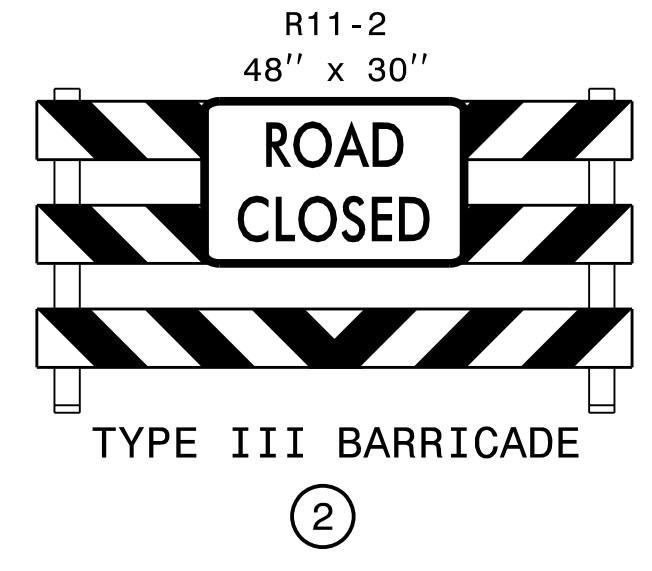
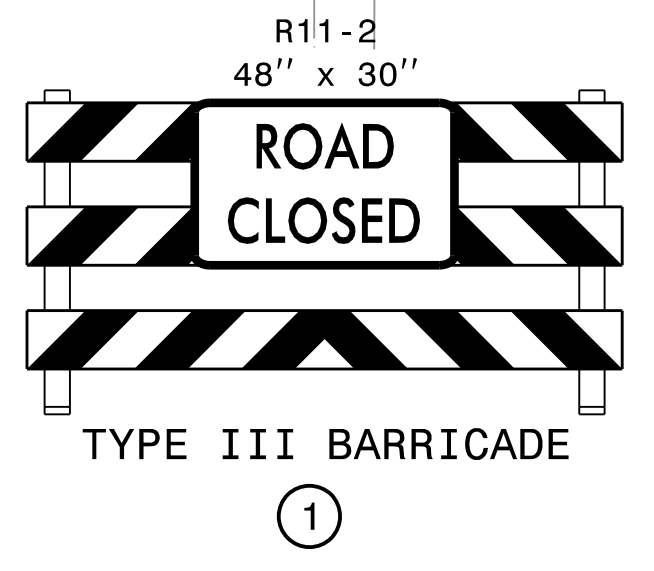
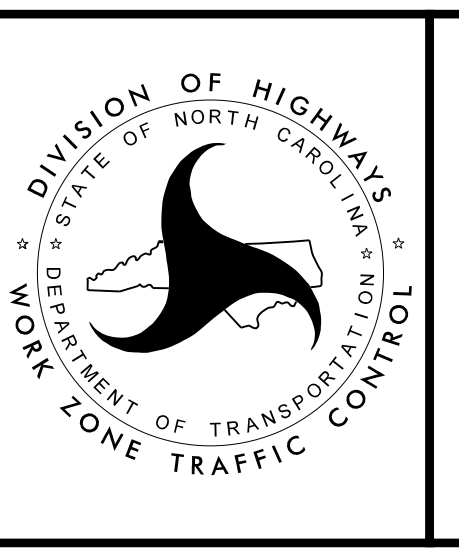
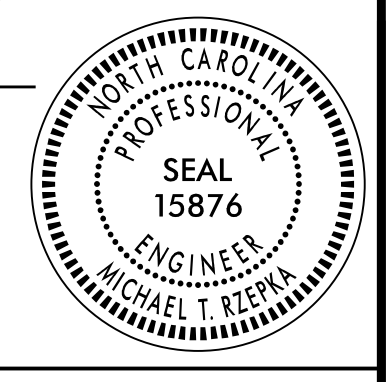


MATCHLINE -L- STA 37+00
SEE SHEET TMP-5

DO NOT CLOSE AND
CONSTRUCT ACROSS
MEADOW AVE. UNTIL
DETOUR USE HAS
FINISHED



APPROVED: *Michael T. Rzepka*
DATE: 9/19/2022
SEAL



PHASE 1, STEP 1
DETAIL

9/19/2022
c:\pwworking\vegost01\c0790674\y4810k_tmp_pls\df103.dgn
10:40:26 AM