

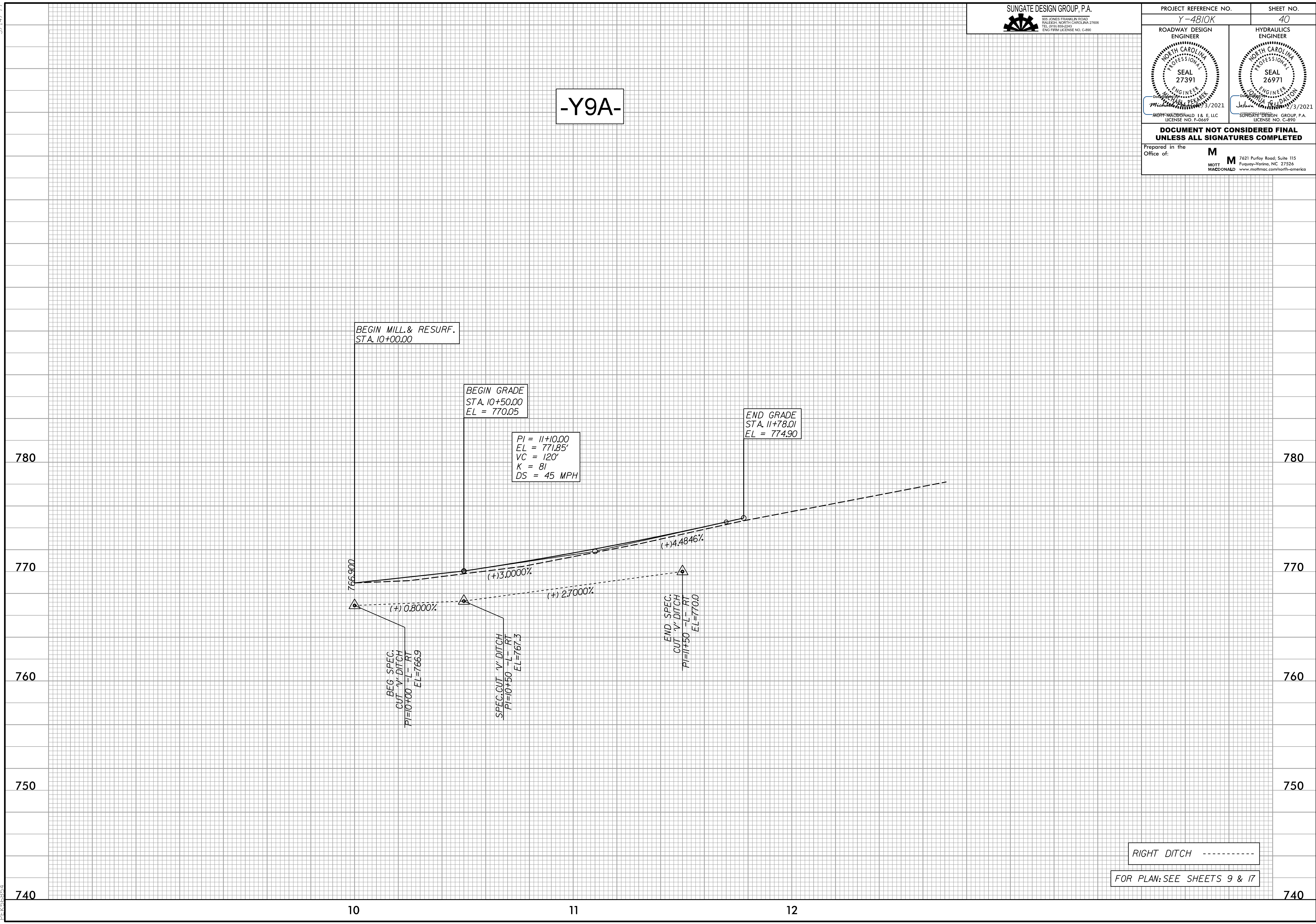
5/14/99

PROJECT REFERENCE NO. Y-4810K	SHEET NO. 40
ROADWAY DESIGN ENGINEER SEAL 27391 MOTT MACDONALD 1 & E, LLC LICENSE NO. F-06697	HYDRAULICS ENGINEER SEAL 26971 MOTT MACDONALD 1 & E, LLC LICENSE NO. C-890

**DOCUMENT NOT CONSIDERED FINAL
UNLESS ALL SIGNATURES COMPLETED**

Prepared in the Office of: **M**
MOTT MACDONALD 7621 Purfoy Road, Suite 115
Fuquay-Varina, NC 27526
www.mottmac.com/north-america

-Y9A-



BEGIN MILL. & RESURF.
STA. 10+00.00

BEGIN GRADE
STA. 10+50.00
EL = 770.05

PI = 11+10.00
EL = 771.85'
VC = 120'
K = 81
DS = 45 MPH

END GRADE
STA. 11+78.01
EL = 774.90

766.900

780

780

770

770

760

760

750

750

740

740

10

11

12

RIGHT DITCH -----

FOR PLAN: SEE SHEETS 9 & 17

4:34:58 PM
C:\Users\p\Documents\Projects\Y4810K\rdj.pfl.psh.dgn
PEK368874