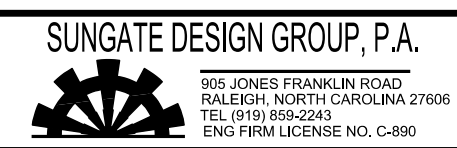


5/14/99



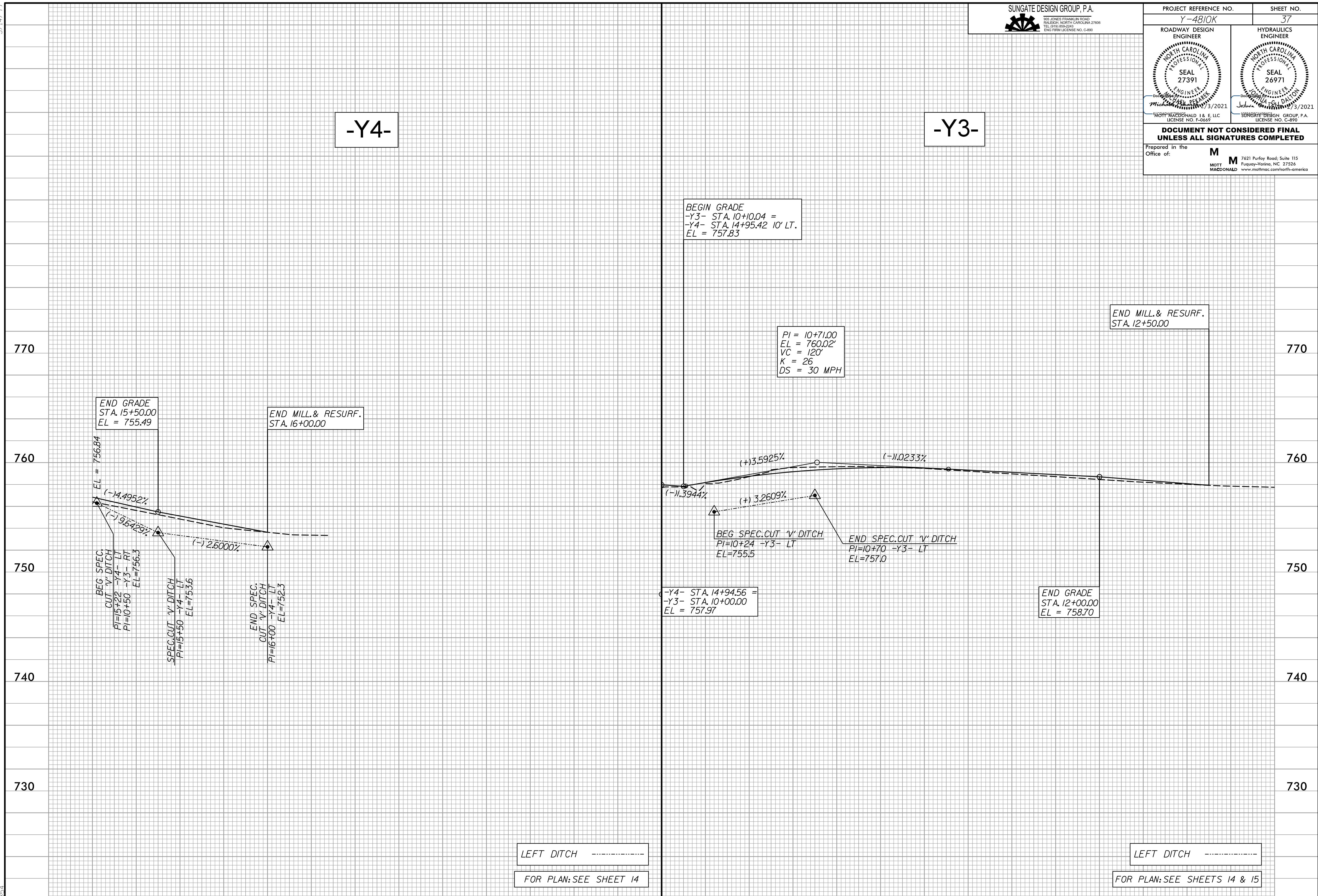
PROJECT REFERENCE NO. <b>Y-4810K</b>	SHEET NO. <b>37</b>
ROADWAY DESIGN ENGINEER <b>SEAL 27391</b> <i>Michael Bekasik</i> 3/2021	HYDRAULICS ENGINEER <b>SEAL 26971</b> <i>Joseph Dalton</i> 3/2021

**DOCUMENT NOT CONSIDERED FINAL UNLESS ALL SIGNATURES COMPLETED**

Prepared in the Office of: **M**  
**MOTT MACDONALD** 7621 Purfoy Road, Suite 115  
 Fuquay-Varina, NC 27526  
 www.mottmac.com/north-america

**-Y4-**

**-Y3-**



BEGIN GRADE  
 -Y3- STA. 10+00.04 =  
 -Y4- STA. 14+95.42 10' LT.  
 EL = 757.83

PI = 10+71.00  
 EL = 760.02'  
 VC = 120'  
 K = 26  
 DS = 30 MPH

END MILL & RESURF.  
 STA. 12+50.00

END GRADE  
 STA. 15+50.00  
 EL = 755.49

END MILL & RESURF.  
 STA. 16+00.00

BEG SPEC. CUT 'V' DITCH  
 PI=10+24 -Y3- LT  
 EL=755.5

END SPEC. CUT 'V' DITCH  
 PI=10+70 -Y3- LT  
 EL=757.0

-Y4- STA. 14+94.56 =  
 -Y3- STA. 10+00.00  
 EL = 757.97

END GRADE  
 STA. 12+00.00  
 EL = 758.70

BEG. SPEC. CUT 'V' DITCH  
 -Y4- LT  
 PI=15+23  
 -Y3- RT  
 PI=10+50  
 EL=756.3

SPEC. CUT 'V' DITCH  
 -Y4- LT  
 PI=15+50  
 EL=753.6

END SPEC. CUT 'V' DITCH  
 -Y4- LT  
 PI=16+00  
 EL=752.3

LEFT DITCH -----  
 FOR PLAN: SEE SHEET 14

LEFT DITCH -----  
 FOR PLAN: SEE SHEETS 14 & 15

4:34:57 PM  
 C:\Users\paulm\OneDrive\Projects\Y4810K\rdj.pfl.psh.dgn  
 PEK568874