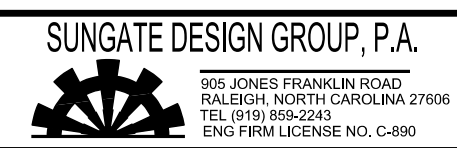


5/14/99

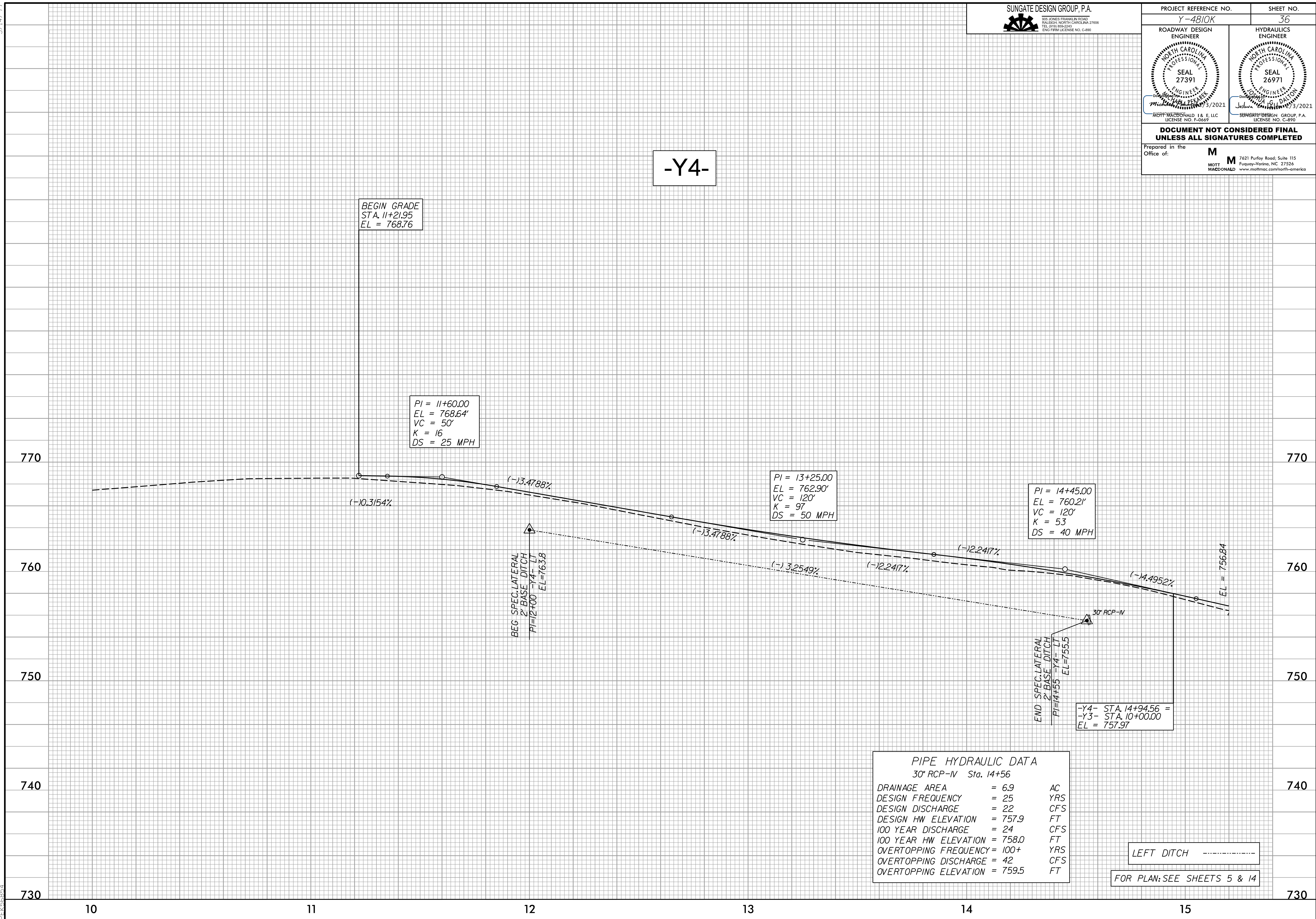


PROJECT REFERENCE NO. Y-4810K	SHEET NO. 36
ROADWAY DESIGN ENGINEER SEAL 27391 MOTT MACDONALD 1 & E, LLC LICENSE NO. F-06697	HYDRAULICS ENGINEER SEAL 26971 MOTT MACDONALD 1 & E, LLC LICENSE NO. C-890

DOCUMENT NOT CONSIDERED FINAL UNLESS ALL SIGNATURES COMPLETED

Prepared in the Office of: **M**
MOTT MACDONALD 1 & E, LLC
7621 Purfoy Road, Suite 115
Fuquay-Varina, NC 27526
www.mottmac.com/north-america

-Y4-



BEGIN GRADE
STA. 11+21.95
EL = 768.76

PI = 11+60.00
EL = 768.64'
VC = 50'
K = 16
DS = 25 MPH

PI = 13+25.00
EL = 762.90'
VC = 120'
K = 97
DS = 50 MPH

PI = 14+45.00
EL = 760.21'
VC = 120'
K = 53
DS = 40 MPH

BEG SPEC. LATERAL
2' BASE DITCH
PI=12+00 EL=763.8

END SPEC. LATERAL
2' BASE DITCH
PI=14+55 EL=755.5

-Y4- STA. 14+94.56 =
-Y3- STA. 10+00.00
EL = 757.97

PIPE HYDRAULIC DATA		
30" RCP-IV Sta. 14+56		
DRAINAGE AREA	= 6.9	AC
DESIGN FREQUENCY	= 25	YRS
DESIGN DISCHARGE	= 22	CFS
DESIGN HW ELEVATION	= 757.9	FT
100 YEAR DISCHARGE	= 24	CFS
100 YEAR HW ELEVATION	= 758.0	FT
OVERTOPPING FREQUENCY	= 100+	YRS
OVERTOPPING DISCHARGE	= 42	CFS
OVERTOPPING ELEVATION	= 759.5	FT

LEFT DITCH -----
FOR PLAN: SEE SHEETS 5 & 14

4:34:57 PM
4:\Y4810K\Proj\Y4810K_r.dwg pfl.psh.dgn
PEK568874