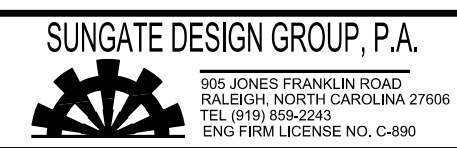


5/14/99



PROJECT REFERENCE NO. Y-4810K	SHEET NO. 34
ROADWAY DESIGN ENGINEER Michael McDonald SEAL 27391 NORTH CAROLINA PROFESSIONAL ENGINEER LICENSE NO. E-06697	HYDRAULICS ENGINEER Joseph S. Dalton SEAL 26971 NORTH CAROLINA PROFESSIONAL ENGINEER LICENSE NO. E-06697

DOCUMENT NOT CONSIDERED FINAL UNLESS ALL SIGNATURES COMPLETED

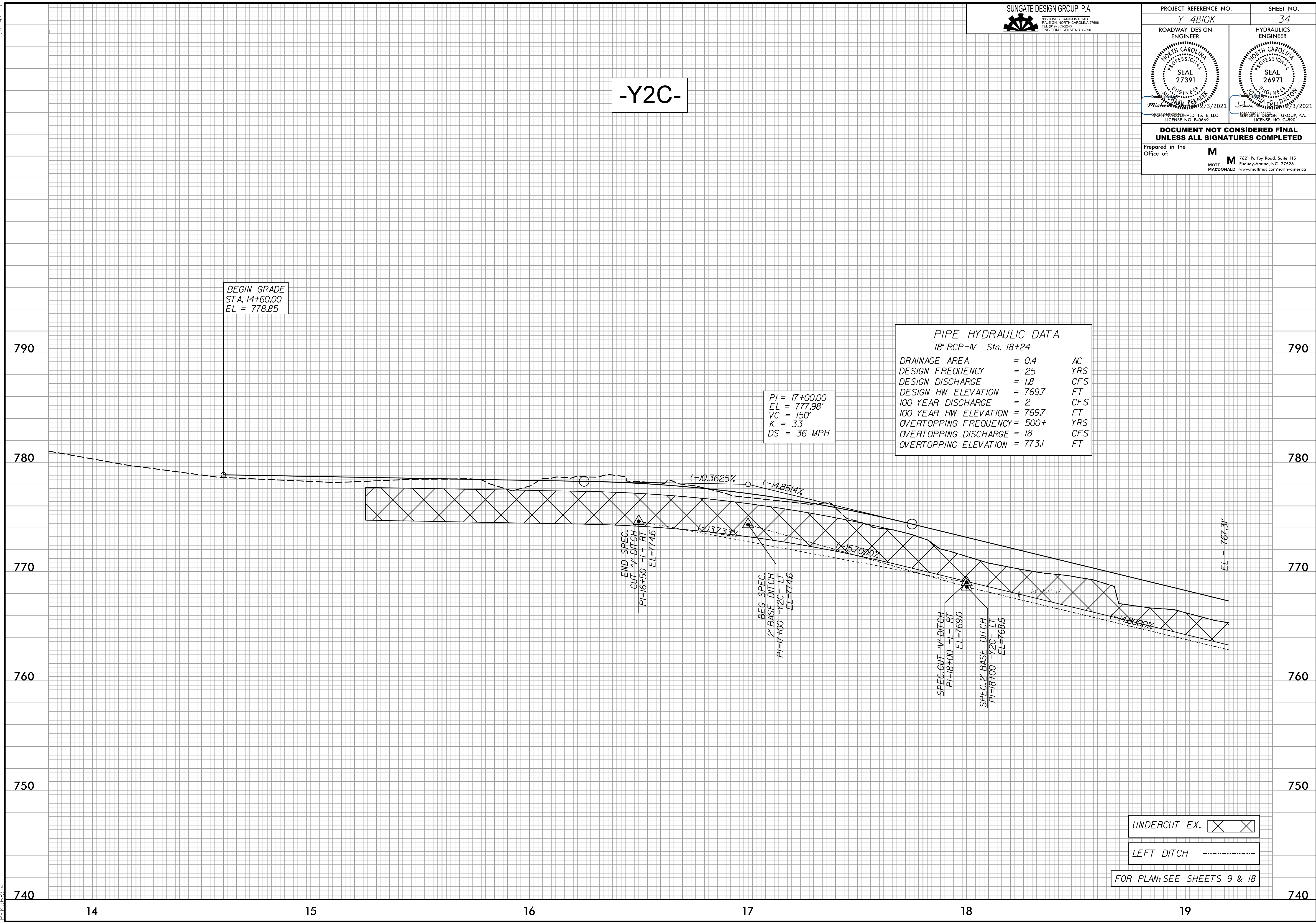
Prepared in the Office of: **M**
MOTT MACDONALD 7621 Purfoy Road, Suite 115
 Fuquay-Varina, NC 27526
 www.mottmac.com/north-america

-Y2C-

BEGIN GRADE
 STA. 14+60.00
 EL = 778.85

PI = 17+00.00
 EL = 777.98'
 VC = 150'
 K = 33
 DS = 36 MPH

PIPE HYDRAULIC DATA		
18" RCP-IV Sta. 18+24		
DRAINAGE AREA	= 0.4	AC
DESIGN FREQUENCY	= 25	YRS
DESIGN DISCHARGE	= 1.8	CFS
DESIGN HW ELEVATION	= 769.7	FT
100 YEAR DISCHARGE	= 2	CFS
100 YEAR HW ELEVATION	= 769.7	FT
OVERTOPPING FREQUENCY	= 500+	YRS
OVERTOPPING DISCHARGE	= 18	CFS
OVERTOPPING ELEVATION	= 773J	FT



UNDERCUT EX.

LEFT DITCH

FOR PLAN: SEE SHEETS 9 & 18

4:34:56 PM
C:\Users\jrd\OneDrive\Projects\Y4810K\rdj.pfl.psh.dgn
PEK568874