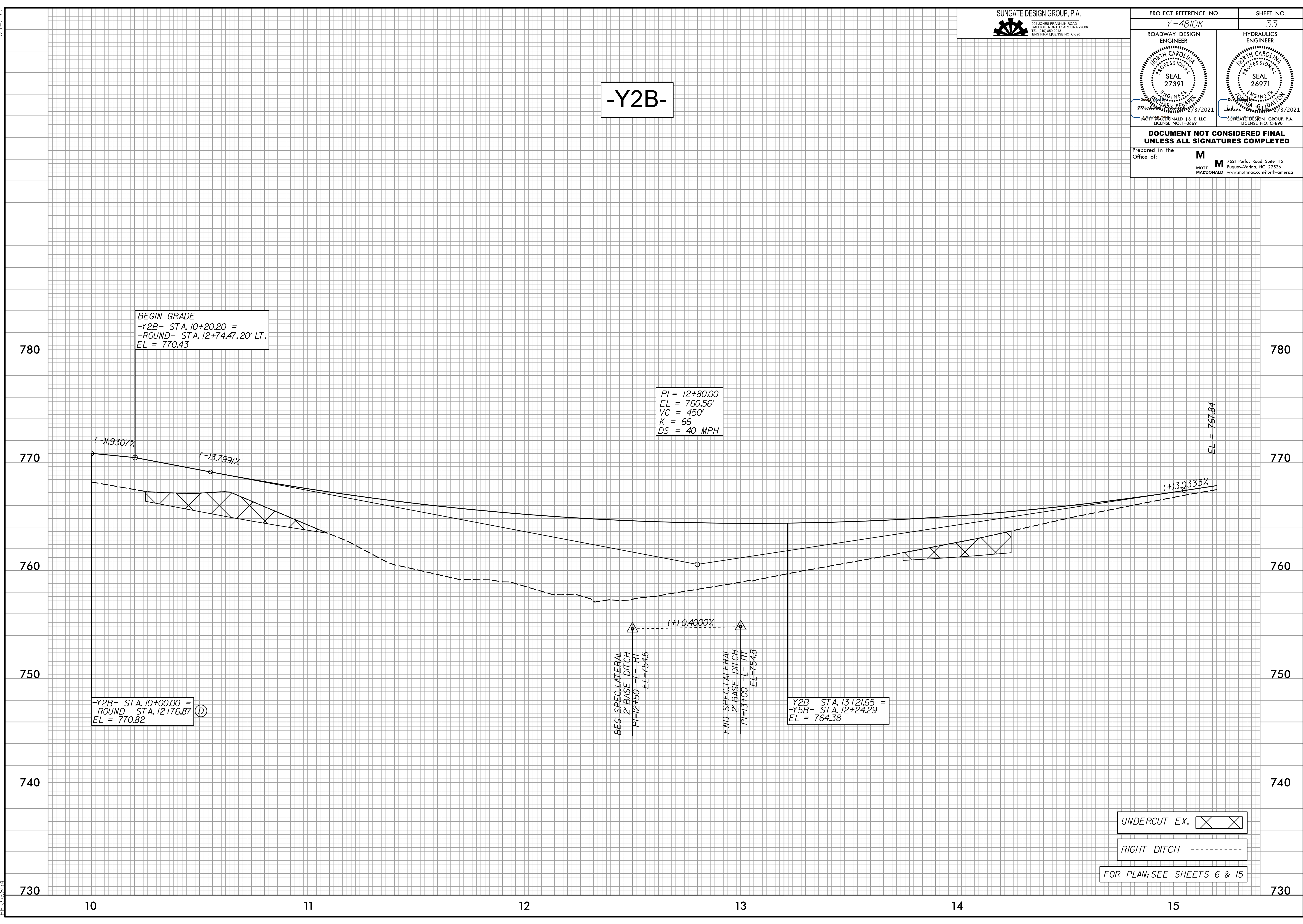


5/14/99

PROJECT REFERENCE NO. Y-4810K	SHEET NO. 33
ROADWAY DESIGN ENGINEER SEAL 27391 MOTT MACDONALD 1 & E, LLC LICENSE NO. F-06697 3/2021	HYDRAULICS ENGINEER SEAL 26971 MOTT MACDONALD 1 & E, LLC LICENSE NO. C-890 3/2021

-Y2B-



BEGIN GRADE
-Y2B- STA. 10+20.20 =
-ROUND- STA. 12+74.47, 20' LT.
EL = 770.43

PI = 12+80.00
EL = 760.56'
VC = 450'
K = 66
DS = 40 MPH

-Y2B- STA. 10+00.00 =
-ROUND- STA. 12+76.87
EL = 770.82

BEG. SPEC. LATERAL
2' BASE L. DITCH
PI=12+50 -L- RT
EL=754.6

END SPEC. LATERAL
2' BASE L. DITCH
PI=13+00 -L- RT
EL=754.8

-Y2B- STA. 13+21.65 =
-Y5B- STA. 12+24.29
EL = 764.38

EL = 767.84

UNDERCUT EX.

RIGHT DITCH

FOR PLAN: SEE SHEETS 6 & 15

4:34:55 PM
4:\Projects\4810K\Drawings\Profile\Y4810K_rdy.pfl.psh.dgn
PEK 3/6/99